



Proudly presents

55 Electronic Drive · Warwick, RI

\$1,895,000



PAUL ZARRELLA

401-641-3337

paul@williamsansstuart.com



BRIAN MCGLOIN

401-829-0318

brian@williamsansstuart.com



55 Electronics Dr

\$1,895,000

Prime industrial opportunity just off Route 95 at the Jefferson Blvd exit, offering unmatched accessibility and strong visibility from the highway. This 17,200 sq. ft. clear-span building is designed for efficiency, with 16-foot ceilings, gas heat, office space, and two overhead doors for easy loading and operations. The 1.4-acre site supports extensive parking and outdoor storage, ideal for fleets, equipment, or contractor yards. With billboard visibility and close proximity to Routes 37 and 295, this is a versatile, high-exposure location for a wide range of commercial uses....

- Great access to Rt 95- 1 min to North and South - Visible signage from Rt 95
- Centrally Located, easy access to Rt 37 and Rt 295
- Open Floorplan

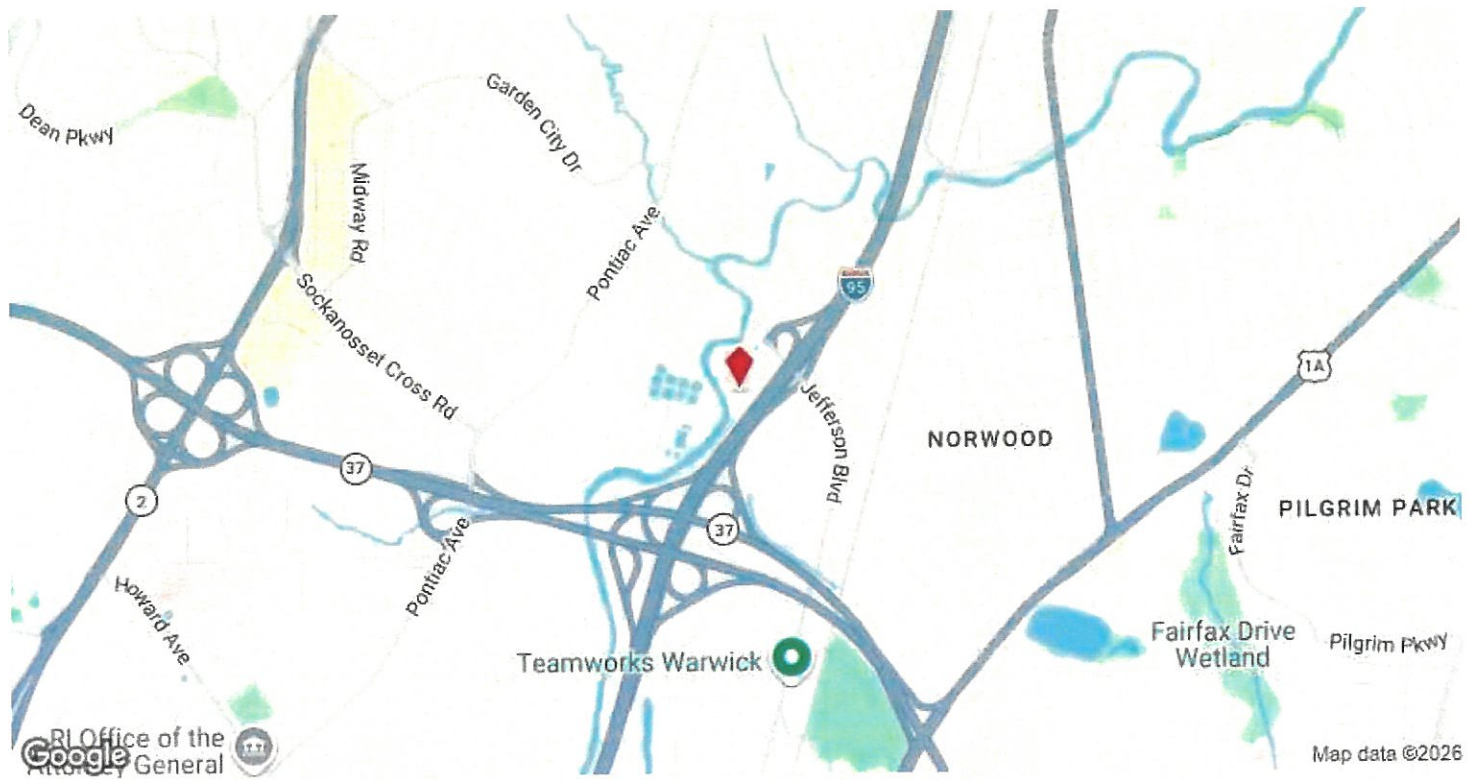


Price:	\$1,895,000
Property Type:	Industrial
Property Subtype:	Showroom
Building Class:	C
Sale Type:	Investment or Owner User
Lot Size:	65,700 SF
Gross Building Area:	18,332 SF
Rentable Building Area:	17,200 SF
No. Stories:	1
Year Built:	1975
Tenancy:	Single
Parking Ratio:	4.36/1,000 SF
Clear Ceiling Height:	16 FT
No. Dock-High Doors/Loading:	1
No. Drive In / Grade-Level Doors:	1



Property Photos





55 Electronics Dr, Warwick, RI 02888

Property Photos



Lobby / entrance



Showroom

Property Photos

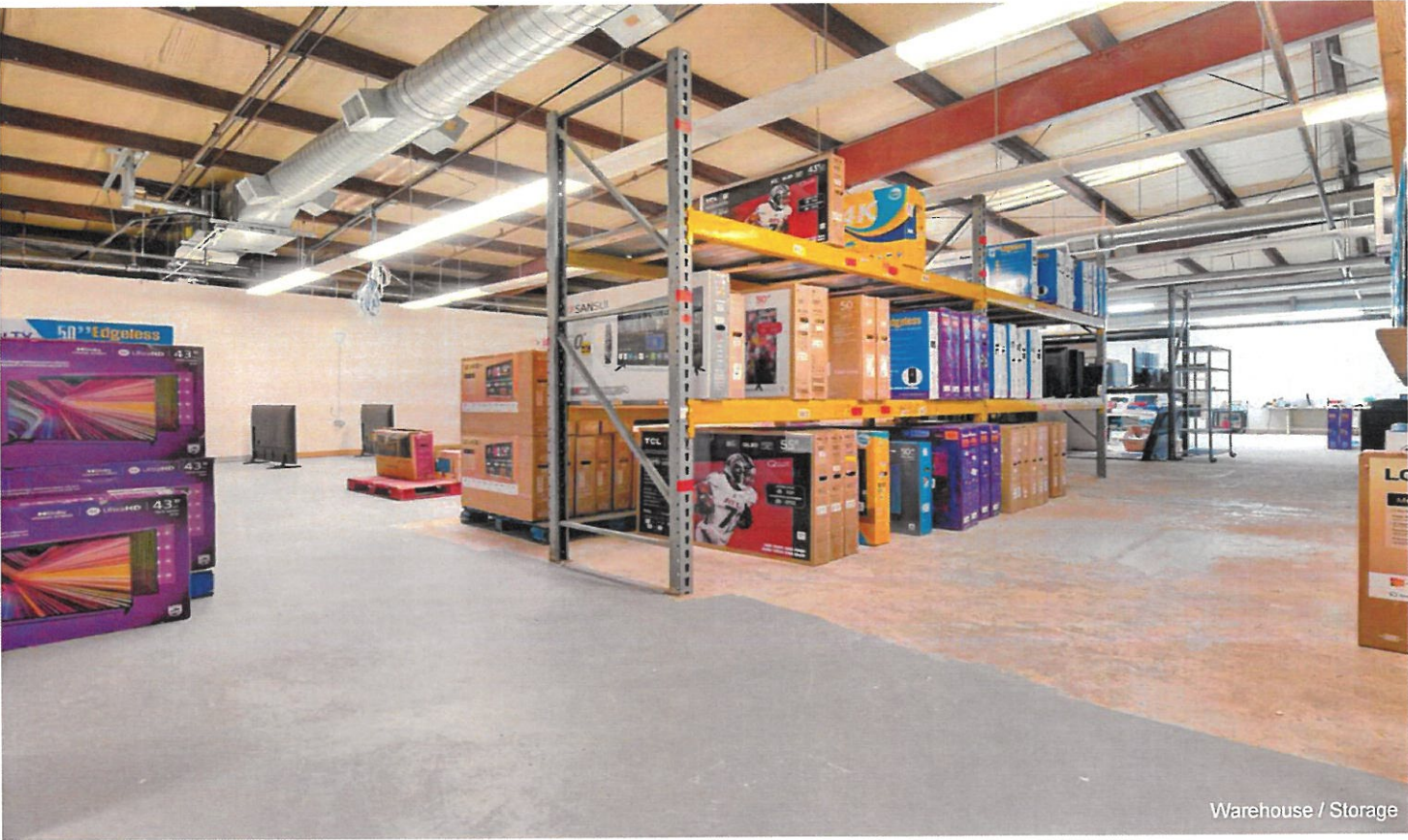


Showroom



Showroom

Property Photos



Warehouse / Storage



Showroom / storage

