



SUITE 240- 7,323 SF

3700 GLENWOOD

3700 GLENWOOD AVENUE, RALEIGH, NC

- \$41.00/RSF Full-Service
- Available February 1, 2026
- Tenant Improvement Allowance – Negotiable
- Free covered parking available in the attached parking deck
- Prime location just inside the Beltline, only 10 minutes from Downtown Raleigh
- Convenient access to RTP and RDU International Airport
- Direct connection to the Raleigh Greenway with free bike share access via the Movatic app
- Scenic, tree-lined street with connecting sidewalks for a walkable environment
- Modern fitness center and on-site shower facilities for tenant wellness
- Professional on-site property management and maintenance for responsive service
- In-building amenities include a coffee shop and a full-service branch bank
- Walkable Retail – featuring a curated selection of vibrant retailers to include:



FLOWCORPS Izakaya & Monya Ramen

 **REGIONS BANK**

LADYFINGERS
MARKET & EATERY

 **quarter note coffee**

NAPA
Bistro & Wine Bar

 **Village Juice & Kitchen**

SUSHI MON
Japanese Restaurant

THE IRON OAKS

Contact us today for more details!

Wendy Nabors

wnabors@grubbventures.com

O: 919.786.9905 C: 919.395.0660

Morgan Bowie

mbowie@grubbventures.com

O: 919.786.9905 C: 540.241.0153

919- 786- 9905

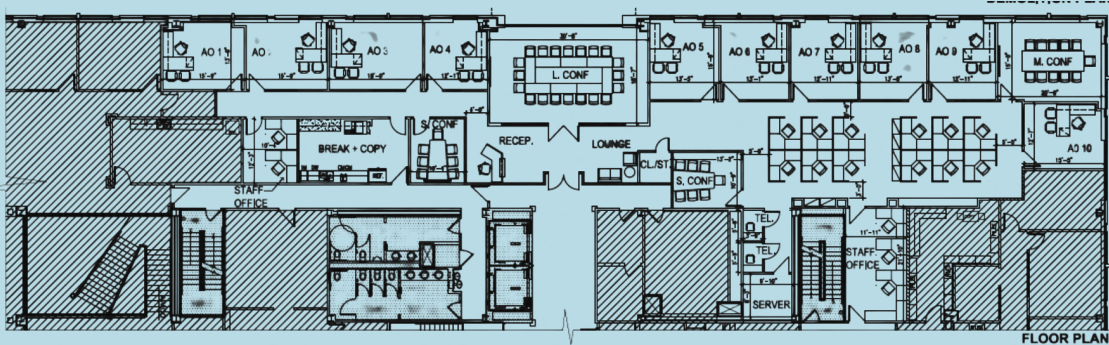
www.glenwoodplace.com

@glenwoodplace

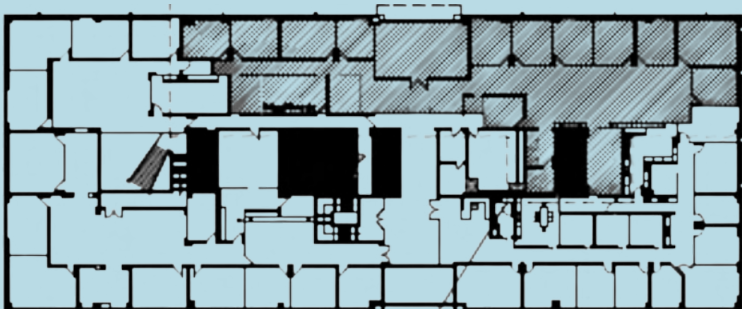


SUITE 240- 7,323 SF

FLOOR PLAN



KEY PLAN



Contact us today for more details!

Wendy Nabors

wnabors@grubbventures.com

O: 919.786.9905 C: 919.395.0660

Morgan Bowie

mbowie@grubbventures.com

O: 919.786.9905 C: 540.241.0153

919-786-9905

www.glenwoodplace.com

@glenwoodplace