



CHRISTIANA

Executive Campus

NEWMARK

DELLE DONNE
&
ASSOCIATES.

TRANSPORTATION ACCESS

CHRISTIANA EXECUTIVE CAMPUS IS LOCATED LESS THAN ONE MILE FROM I-95 NORTH, ALLOWING FOR IMMEDIATE ACCESS TO THE FOLLOWING LOCATIONS:

DRIVETIMES	
PHILADELPHIA INTERNATIONAL AIRPORT	27 MINUTES
CENTER CITY PHILADELPHIA	40 MINUTES
WILMINGTON	13 MINUTES
NEW YORK CITY	<2 HOURS

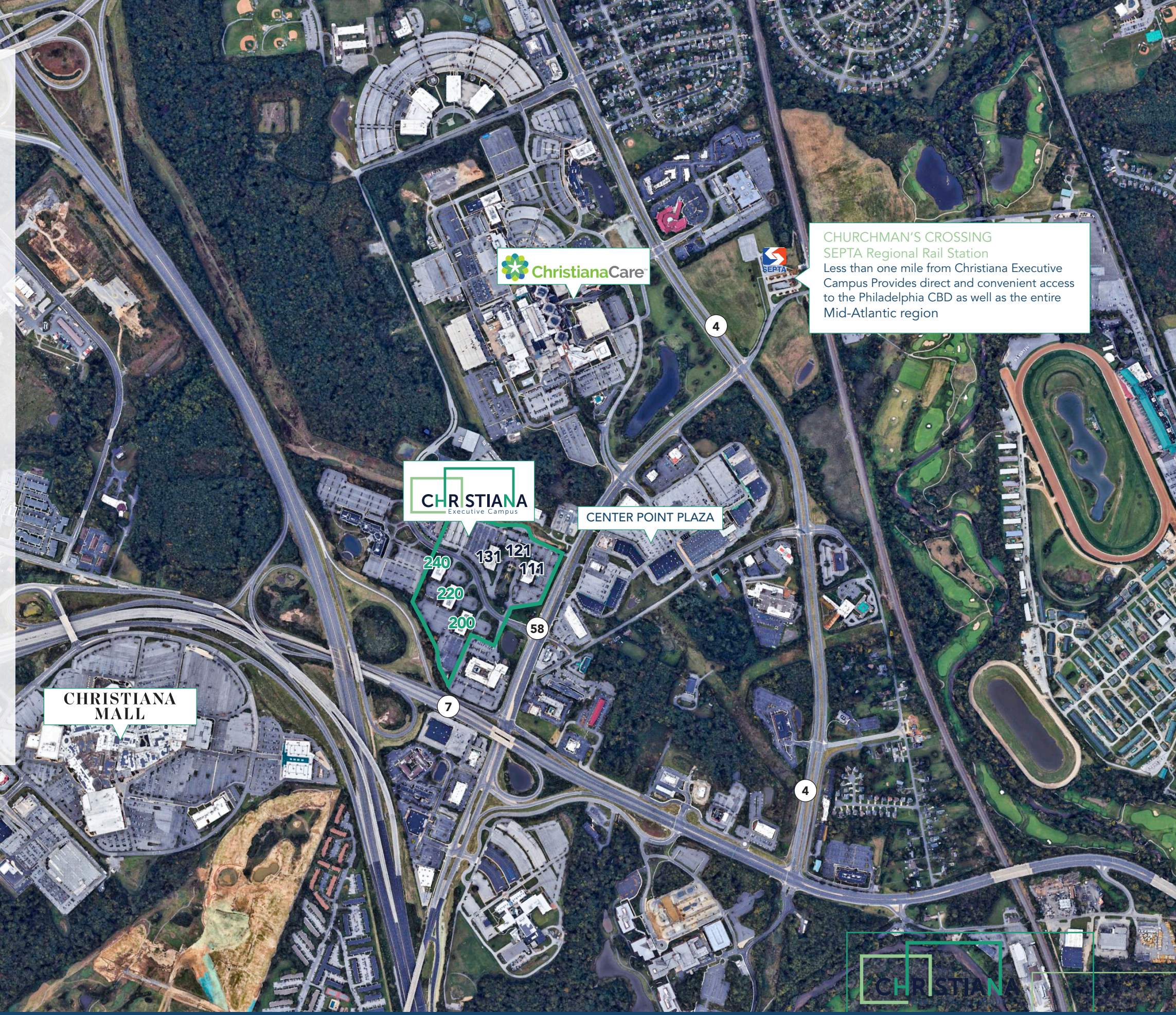
Access to Amtrak is located 7.6 miles away at the Amtrak station in Wilmington. Major northeast cities (Philadelphia, Boston, New York, Baltimore & Washington DC) can be easily accessed by train from the station as well as cities to the West (Cincinnati, Indianapolis & Chicago) and to the South (Raleigh, Charlotte, Atlanta, Orlando & Miami).

SEPTA also offers public transportation to and from Philadelphia at the nearby Churchman’s Crossing Regional Rail Station, less than one mile from the properties, via the Wilmington/Newark line.

DART service is available to the Christiana Executive Campus. DART’s Route 33 bus stop at Continental Drive and the Hilton Wilmington-Christiana has six stops per day:

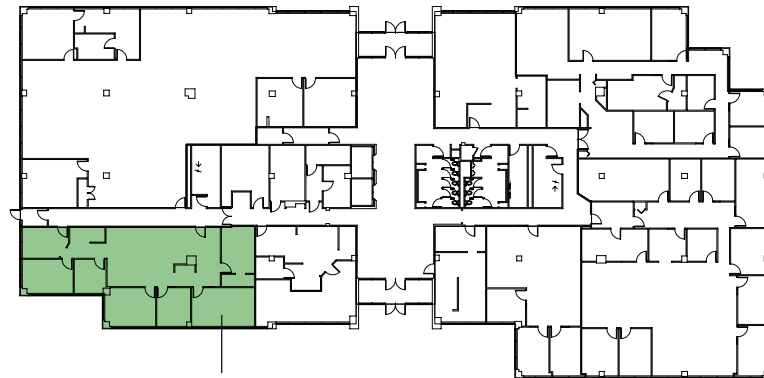
7:41 AM	8:02 AM	8:47 AM
4:47 PM	5:04 PM	5:47 PM

DART service includes inbound/outbound service to SEPTA’s Regional Rail line at Fairplay Station.



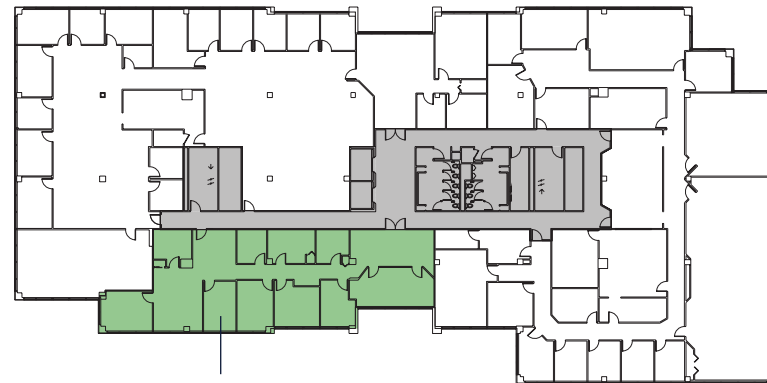
111 CONTINENTAL DRIVE

1ST
FLOOR



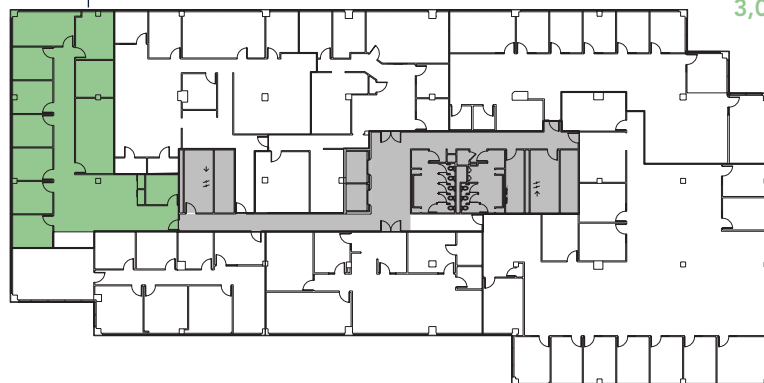
SUITE 111
2,250 SF

2ND
FLOOR



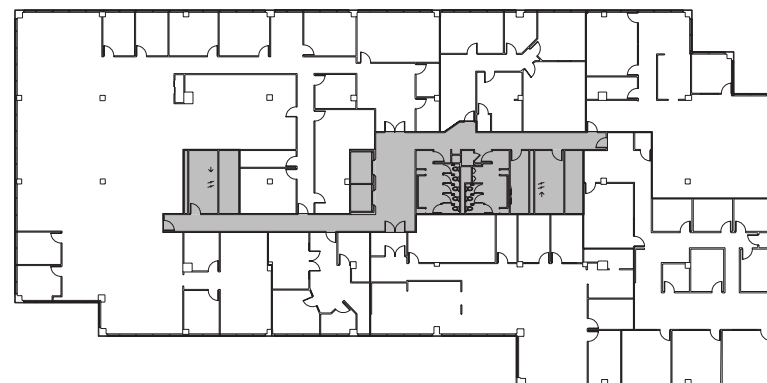
SUITE 211
3,021 SF

3RD
FLOOR



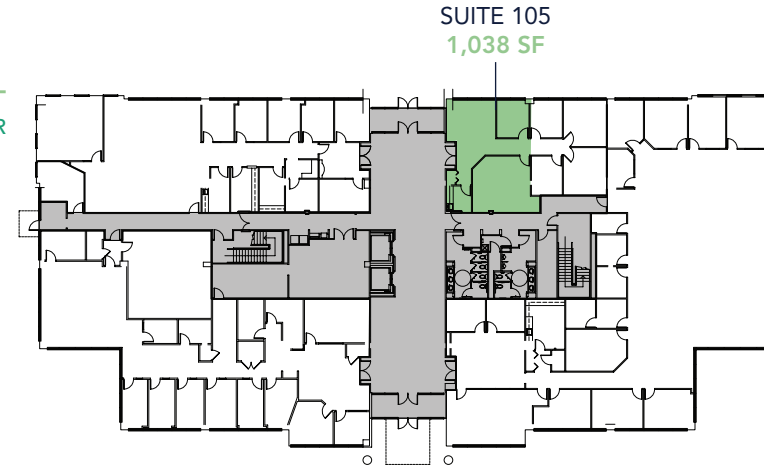
SUITE 310
2,919 SF

4TH
FLOOR



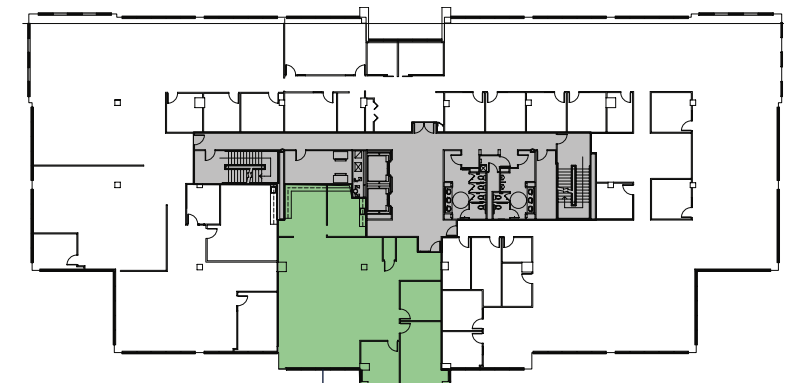
121 CONTINENTAL DRIVE

1ST
FLOOR



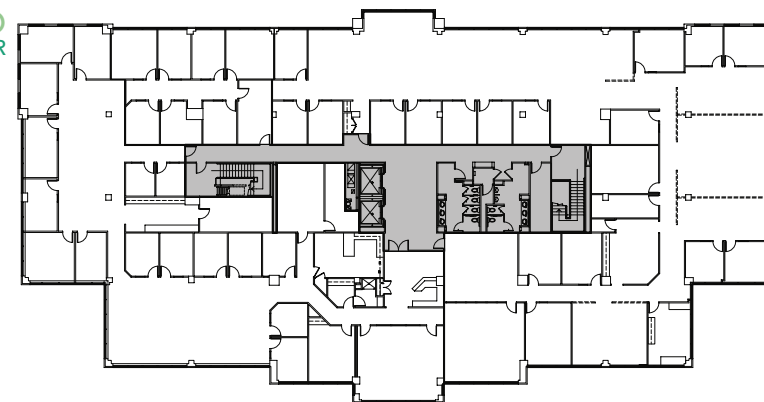
SUITE 105
1,038 SF

2ND
FLOOR



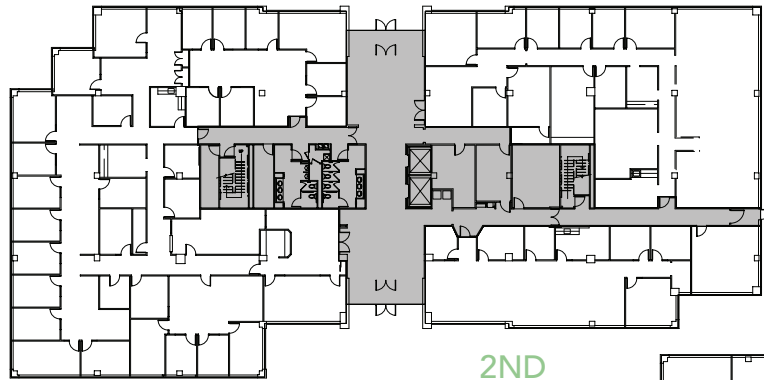
SUITE 208
2,980 SF

3RD
FLOOR

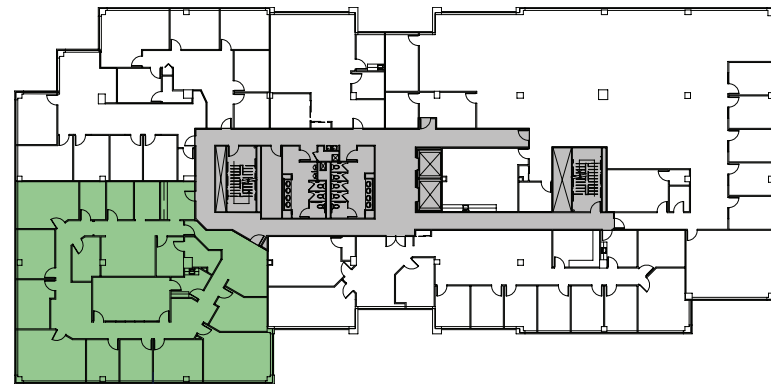


131 CONTINENTAL DRIVE

1ST
FLOOR

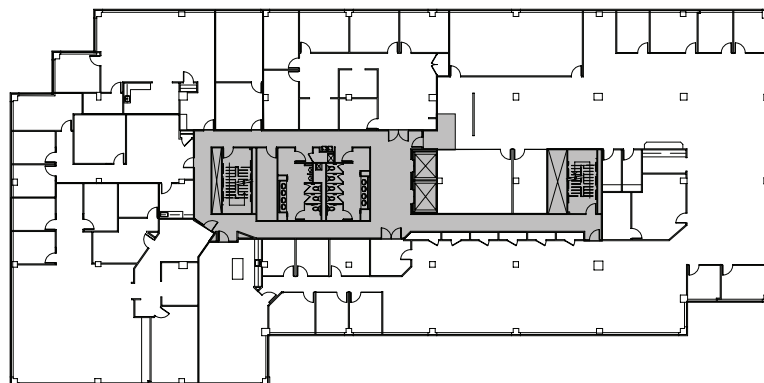


2ND
FLOOR



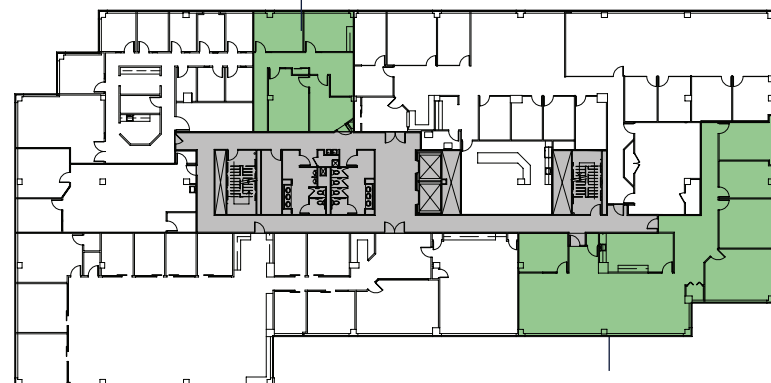
SUITE 202
4,987 SF

3RD
FLOOR



SUITE 406
1,276 SF

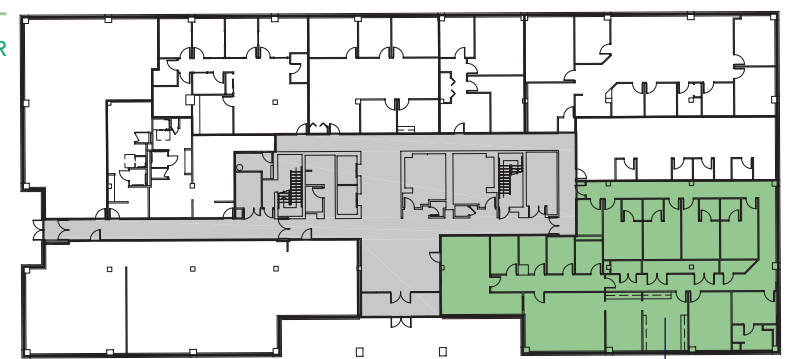
4TH
FLOOR



SUITE 410
3,422 SF

200 CONTINENTAL DRIVE

1ST
FLOOR



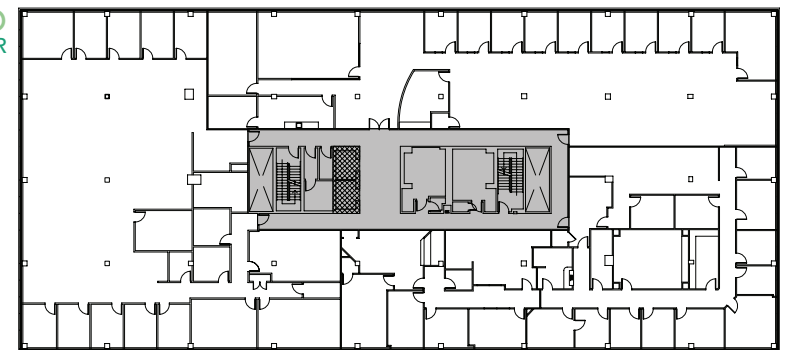
SUITE 112
5,019 SF

2ND
FLOOR

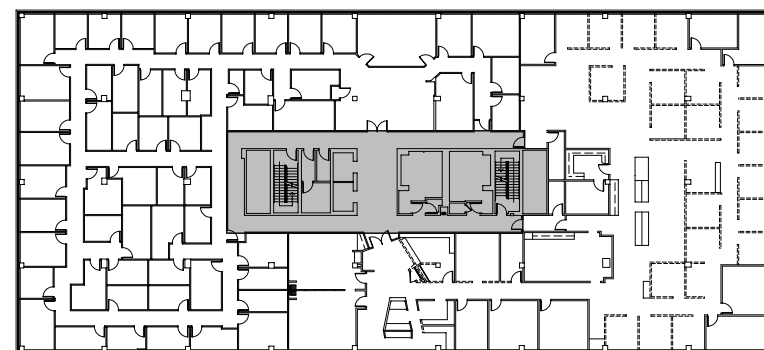


SUITE 200
2,784 SF

3RD
FLOOR

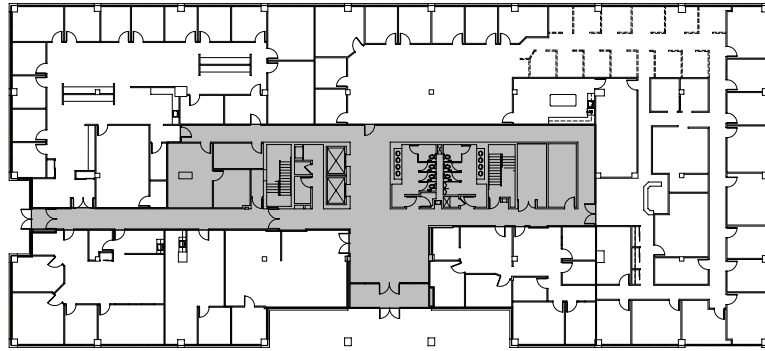


4TH
FLOOR



220 CONTINENTAL DRIVE

1ST FLOOR



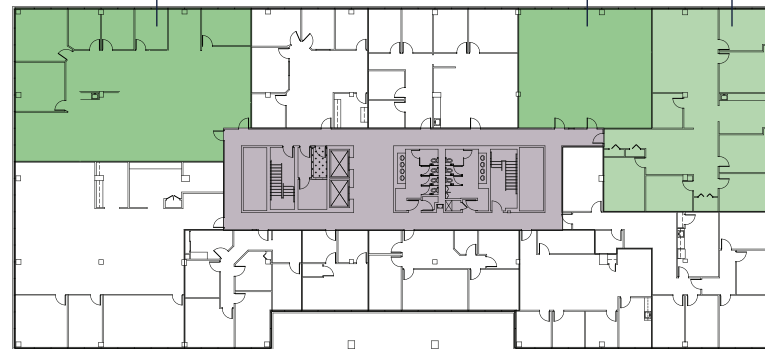
SUITE 203
3,697 SF

4,645 SF
CONTIGUOUS

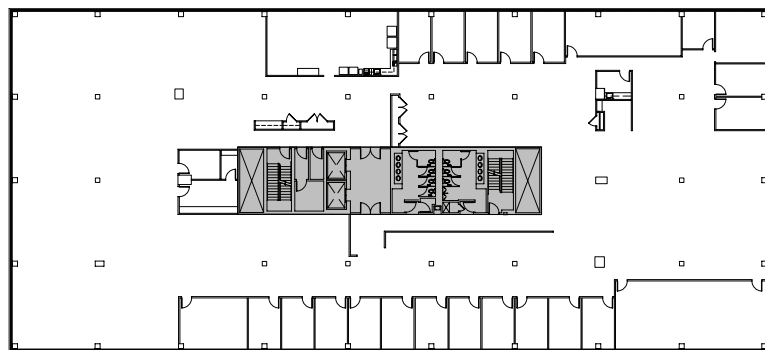
SUITE 202
1,673 SF

SUITE 215
2,972 SF

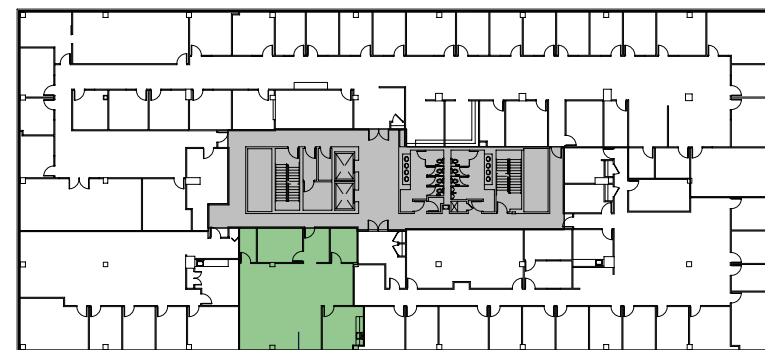
2ND FLOOR



3RD FLOOR



4TH FLOOR



SUITE 404
1,531 SF

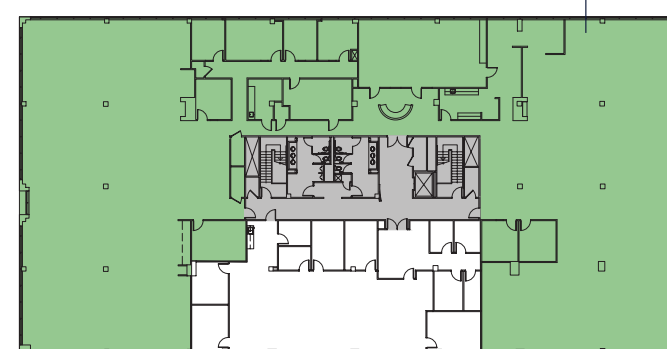
240 CONTINENTAL DRIVE

1ST FLOOR



SUITE 104
2,015 SF

2ND FLOOR



SUITE 200
18,069 SF



111 CONTINENTAL DRIVE	
YEAR COMPLETED	1990
RENTABLE AREA	86,043 SF
NUMBER OF FLOORS	4
TYPICAL FLOOR SIZES	22,330 SF
PARKING RATIO	3.64/1,000 SF
121 CONTINENTAL DRIVE	
YEAR COMPLETED	2000
RENTABLE AREA	64,977 SF
NUMBER OF FLOORS	3
TYPICAL FLOOR SIZES	19,004 SF
PARKING RATIO	4.93/1,000 SF
131 CONTINENTAL DRIVE	
YEAR COMPLETED	1998
RENTABLE AREA	87,774 SF
NUMBER OF FLOORS	4
TYPICAL FLOOR SIZES	19,439 SF
PARKING RATIO	4.17/1,000 SF
200 CONTINENTAL DRIVE	
YEAR COMPLETED	1986
RENTABLE AREA	86,343 SF
NUMBER OF FLOORS	4
TYPICAL FLOOR SIZES	19,624 SF
PARKING RATIO	3.63/1,000 SF
220 CONTINENTAL DRIVE	
YEAR COMPLETED	1988
RENTABLE AREA	87,697 SF
NUMBER OF FLOORS	4
TYPICAL FLOOR SIZES	19,772 SF
PARKING RATIO	3.59/1,000 SF
240 CONTINENTAL DRIVE	
YEAR COMPLETED	1989
RENTABLE AREA	41,065 SF
NUMBER OF FLOORS	2
TYPICAL FLOOR SIZES	19,431 SF
PARKING RATIO	3.68/1,000 SF

GREEN INITIATIVES AT CHRISTIANA EXECUTIVE CAMPUS



WHITE-REFLECTIVE & ENERGY CONSERVING ROOFS



ENERGY EFFICIENT DEEP CELL PARABOLIC LIGHT FIXTURES



OCCUPANCY SENSORS IN OFFICES & RESTROOMS



GREEN SEAL CERTIFIED CLEANING PRODUCTS



FULLY ORGANIC LANDSCAPING PROGRAM



121 CONTINENTAL DRIVE FEATURES 456 SOLAR PANELS

LOCAL AMENITIES

TENANTS HAVE A MULTITUDE OF RESTAURANTS WITHIN ONE MILE OF CHRISTIANA EXECUTIVE CAMPUS, INCLUDING:



Applebee's

Crab du Jour

Jimmy John's

Miller's Ale House

Potstickers Asian Grill

Cheddar's Scratch Kitchen


Firebirds Wood Fired Grill

Market Kitchen & Bar

Olive Garden

Red Lobster

CHRISTIANA MALL IS THREE MINUTE DRIVE (1.5 MILES) AND IS CONSIDERED THE FINEST MALL IN DELAWARE. RETAILERS INCLUDE:



American Eagle

Barnes & Noble

The Cheesecake Factory

Cinemark

Express

H&M

Loft

Nordstrom

Saladworks

Target

Apple

Bath & Body Works

Chick-fil-A

Coach

Five Guys

Jamba Juice

Lululemon

P.F. Chang's

Sephora

Uniqlo

Banana Republic

Champs Sports

Chipotle

Dunkin

GameStop

Lego


Macy's

PacSun

Starbucks

Urban Outfitters

THERE ARE MULTIPLE OPTIONS FOR HOTELS NEARBY, INCLUDING:



The Hilton Wilmington is conveniently located on the Christiana Executive Campus, offering 266 guest rooms, 9,000 SF of meeting space and a restaurant. Amenities include: The Hunt Club Bar & Patio, elegant courtyard, complimentary WiFi, business center, 24-hour fitness center, outdoor pool and jacuzzi, and room service.

Other hotels include: Extended Stay America (in the park), Hampton Inn & Suites (1 mile), Days Inn (2 miles), Holiday Inn Express (2 miles), Sheraton Wilmington (3.3 miles), and Courtyard Wilmington (4 miles)

ON-SITE CAFÉ & FITNESS CENTER

NOW FEATURING NOURISH MARKETS, A KIOSK CAFÉ AT 111 CONTINENTAL DRIVE, SUITE 107.



TENANTS HAVE ACCESS TO A STATE-OF-THE-ART FITNESS CENTER AT 200 CONTINENTAL DRIVE.



NEWMARK

DELLE DONNE
&
ASSOCIATES.

FOR MORE INFORMATION, PLEASE CONTACT:

Neal Dangelo, MCR
Senior Managing Director
302-655-2082
neal.dangelo@nmrk.com

1521 Concord Pike, Suite 301
Wilmington, DE 19803
302-655-0600
NMRK.COM



The information contained herein has been obtained from sources deemed reliable but has not been verified and no guarantee, warranty or representation, either express or implied, is made with respect to such information. Terms of sale or lease and availability are subject to change or withdrawal without notice.