

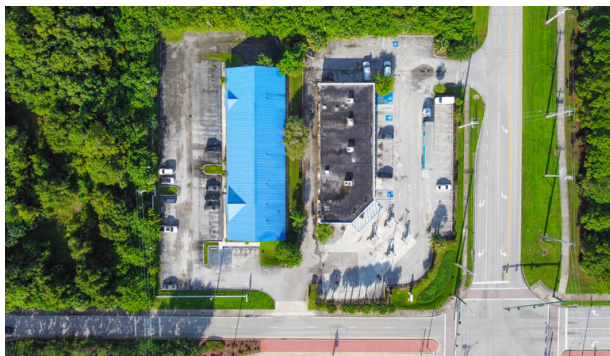
FOR SALE



1500 SE Lennard Rd

Port St Lucie, FL 34952

Progressive Properties of Stuart, Inc



PROPERTY OVERVIEW

A versatile CBS block commercial building with a metal roof and 50+ parking spaces, it is designed for flexibility, allowing it to be divided to suit various business needs. The prime location is close to St. Lucie Medical Center, ensuring high visibility and convenience. Additionally, it benefits from easy access via a traffic light corner, making it an ideal choice for businesses seeking a strategic and adaptable space.

OFFERING SUMMARY

Building Size:	9,460 SF
Zoning:	Neighborhood Commercial
Land Use:	Commercial Limited
Year Built:	1991

TYLER RAYNES

ASSOCIATE
MOBILE (772) 418-1946
RAYNESCRE@GMAIL.COM



SALE PRICE \$2,700,000

ADDITIONAL PHOTOS

1500 SE Lennard Rd

Port St Lucie, FL 34952



Progressive Properties of Stuart, Inc

