



# 129 Main Street

Old Saybrook, CT 06475

**1,439 SF**

**Multiple  
Suites  
Available**

**9**

Number of Tenants

**1753**

Year of Build



Strategically positioned along Main Street in Old Saybrook, this multi-tenant office property offers flexible suite sizes suited for professional, service, and boutique users. The building features both front and rear access, with shared kitchen and restroom facilities centrally located for tenant convenience. Several suites offer direct exterior entrances, supporting ease of access for clients and staff. Interior layouts provide a mix of private offices and open configurations, with connecting doorways between select suites allowing for expanded footprints, if available at time of lease. Ample on-site parking supports daily operations. The location benefits from strong visibility, convenient access to surrounding amenities, and proximity to I-95 and Route 9, providing regional connectivity across shoreline and central Connecticut markets.

## For more Information Contact:

Gregory Beebe  
Phone: (860) 400-9476  
Email: leasing@beebece.com



### 129 Main Street - Key Facts

Old Saybrook, CT 06475

Date Available	05/01/2026	Lease Type	Modified Gross
Available Area	1,439	Base Rent	\$26.00- \$30.00 PSF Gross
Lot Size	0.31 Acres	Parking	1 space per suite
Lease Term	1-5 Years	AADT	10,500
Building Type	Office	Loading Dock Type	None
Finished Ceiling Height	8 ft	Number of Docks	0
Floors	1	Zoning	B-1

### Construction

Interior Walls	Drywall (Gypsum Board)
Floor	Carpet
Roof	Asphalt shingle

### Mechanical

HVAC	Forced Hot Air (Oil) + Central AC
Sprinkler	Automatic Fire Sprinkler System
Electrical	Single Phase, 100-150 Amps, 120/240 Volts

### Space Description

Five first-floor suites totaling 1,439 SF are available individually or in combination, ranging from 180 SF to 442 SF. Contiguous configurations up to 991 SF are possible depending on availability at time of lease. Rent ranges from \$26.00 to \$30.00 PSF on a modified gross basis. A utility charge of 15% of base rent covers heat, air conditioning, electricity, and water. Real estate taxes and property insurance are paid directly by the landlord.

## For more Information Contact:

Gregory Beebe  
Phone: (860) 400-9476  
Email: [leasing@beebecre.com](mailto:leasing@beebecre.com)



Licensed in Connecticut & Rhode Island  
Agents for Switz Real Estate Associates Inc.

### 129 Main Street - Inside Image

Old Saybrook, CT 06475



# For more Information Contact:

Gregory Beebe  
Phone: (860) 400-9476  
Email: leasing@beebece.com



Licensed in Connecticut & Rhode Island  
Agents for Switz Real Estate Associates Inc.

## 129 Main Street - Outside Image

Old Saybrook, CT 06475



## For more Information Contact:

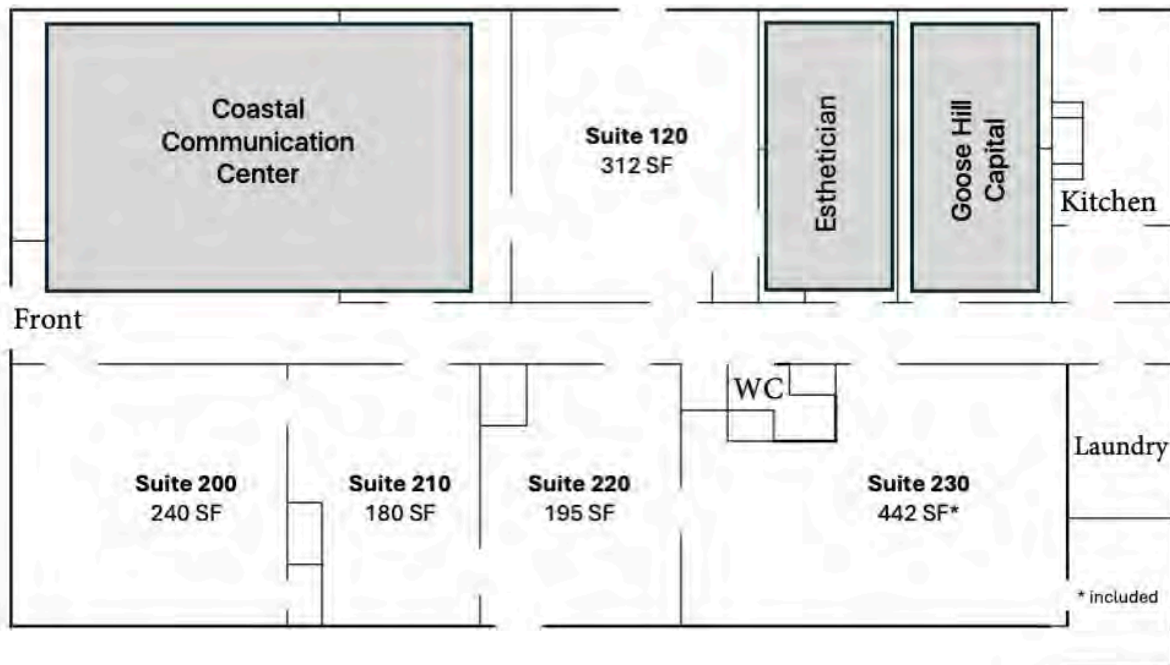
Gregory Beebe  
Phone: (860) 400-9476  
Email: leasing@beebece.com



Licensed in Connecticut & Rhode Island  
Agents for Switz Real Estate Associates Inc.

## 129 Main Street - Tenant Map

Old Saybrook, CT 06475



## For more Information Contact:

Gregory Beebe  
Phone: (860) 400-9476  
Email: leasing@beebece.com



## Demographic Highlights & Population Projections

Old Saybrook, CT 06475



Est. Population (2025)  
18,838



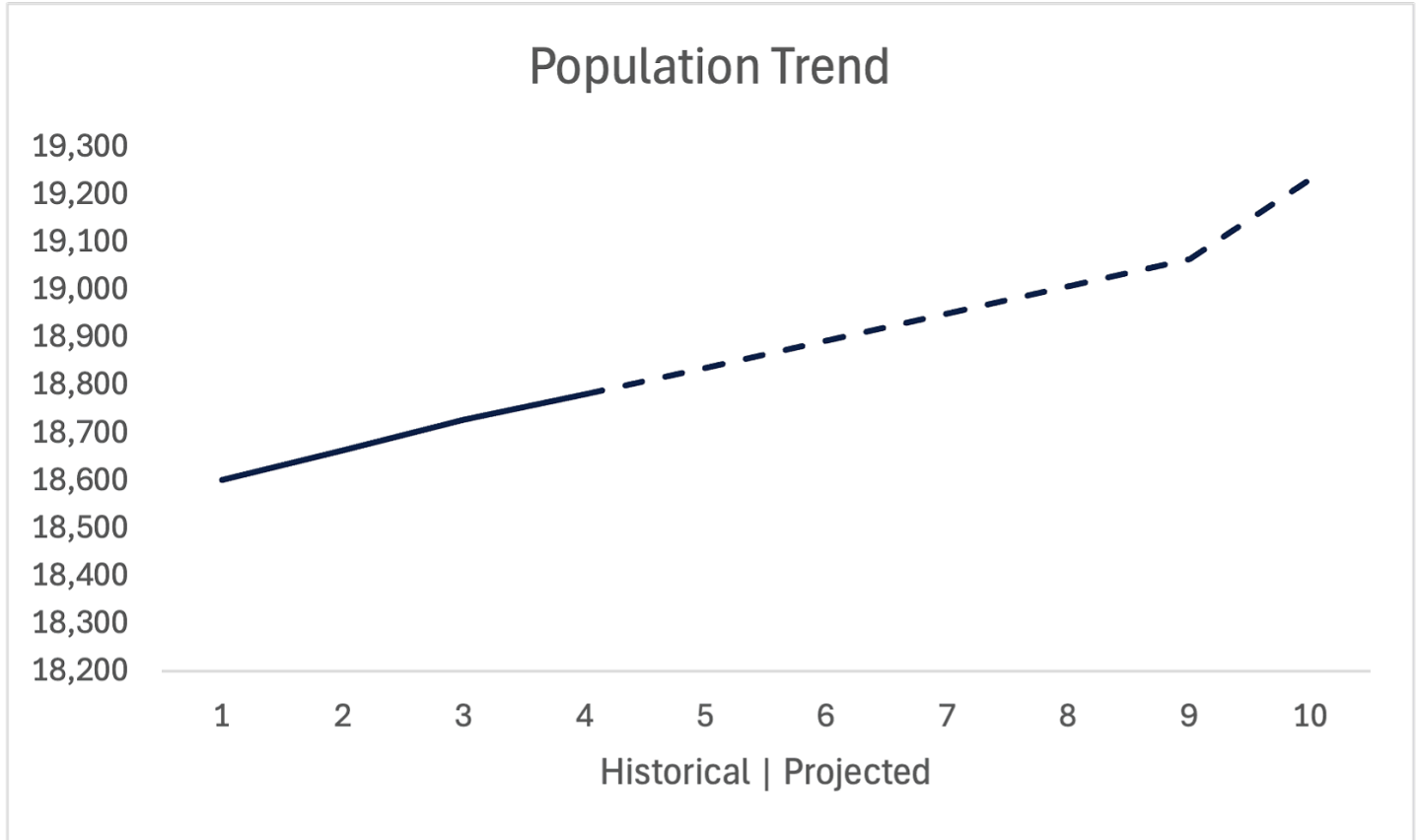
Est. Population (2024)  
18,782



Median Age  
53



Median Income  
\$114,797



Old Saybrook's population totals approximately 10,500 residents and increases significantly during peak seasonal periods due to its position as a shoreline destination. The town benefits from a stable residential base supported by tourism, hospitality, healthcare, and professional services. With a median household income exceeding \$85,000 and a median age in the low 50s, Old Saybrook reflects an affluent, established demographic with strong spending power. The trade area is further supported by regional visitors from surrounding shoreline communities, reinforcing consistent demand for retail, service, and professional office uses.

## Switz Real Estate Associates Inc.

Broker License # REB.0669543

9 Mason's Island Road, Mystic CT 06355

Office: (860) 572-9501

