



BARLEY PARK

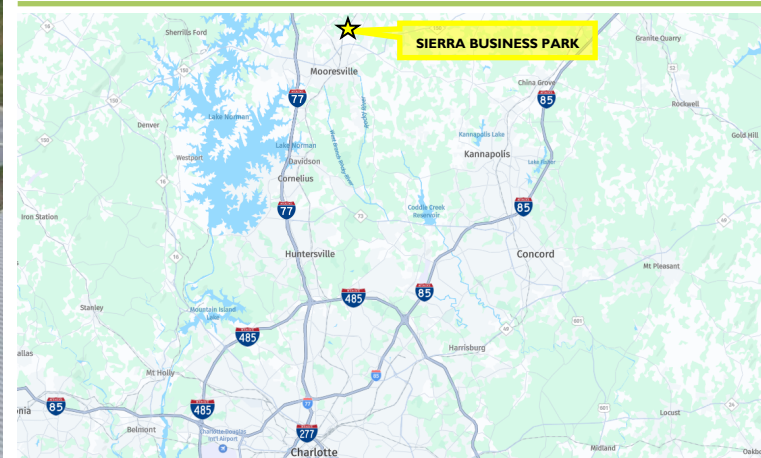
159 Barley Park Ln
Mooresville, NC 28115

±36,000 SF Industrial-Flex Property
**3,000 - 4,500 SF
for Lease**

- ◆ Located in the heart of NASCAR Country
- ◆ 5 miles from I-77
- ◆ Convenient to Lake Norman
- ◆ Low Iredell County taxes

Availability

- ◆ **159B: 3,000 SF**
 - ◆ 1,215 SF office, 1,480 SF warehouse & 1,233 SF Conditioned Mezzanine
 - ◆ 12' x 12' OHD
- ◆ **159E: 4,175 SF**
 - ◆ 461 SF office, 3,245 SF warehouse & 469 SF Mezzanine with fenced storage yard
 - ◆ 12' x 12' OHD & 14' x 14' OHD
- ◆ **161C: 3,000 SF**
 - ◆ 327 SF office, 2,497 SF warehouse & 429 SF Mezzanine
 - ◆ 14' x 14' OHD



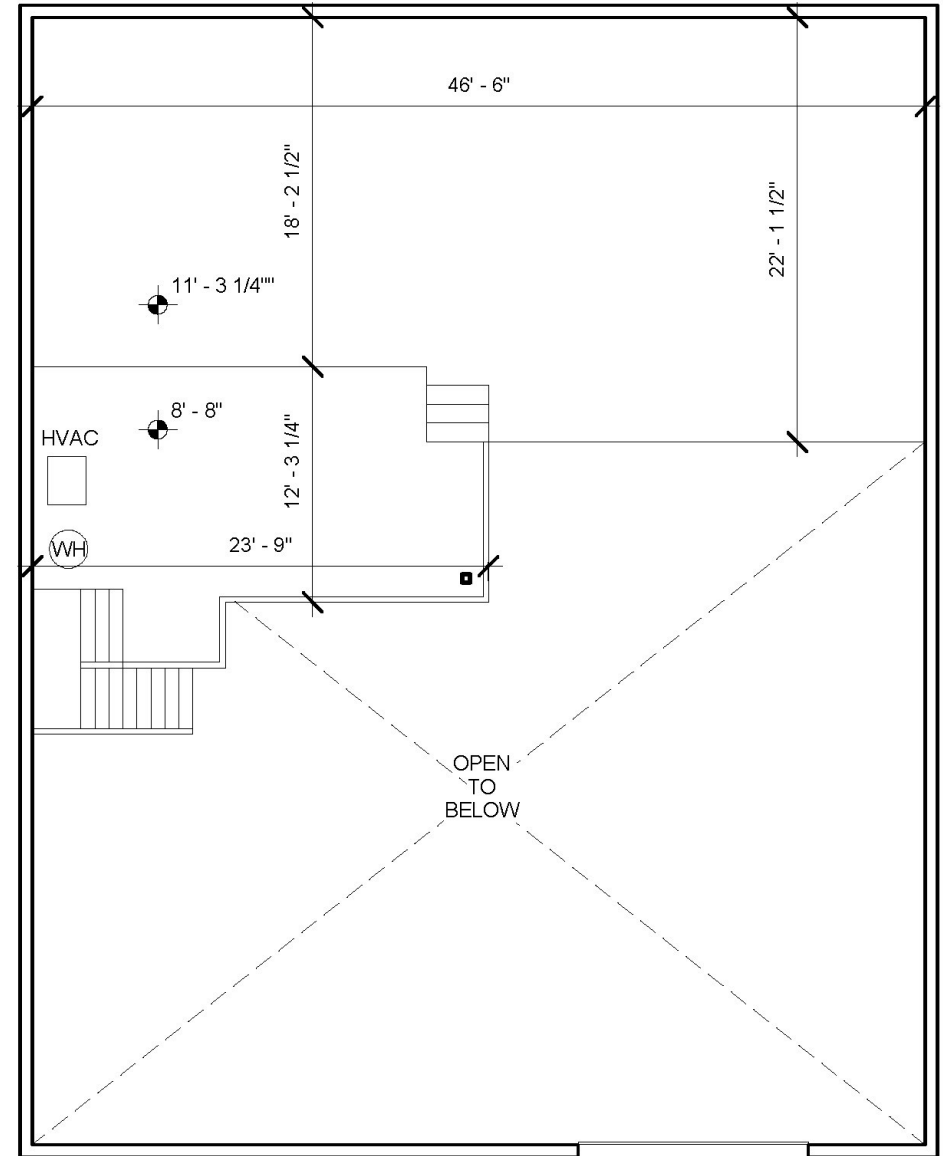
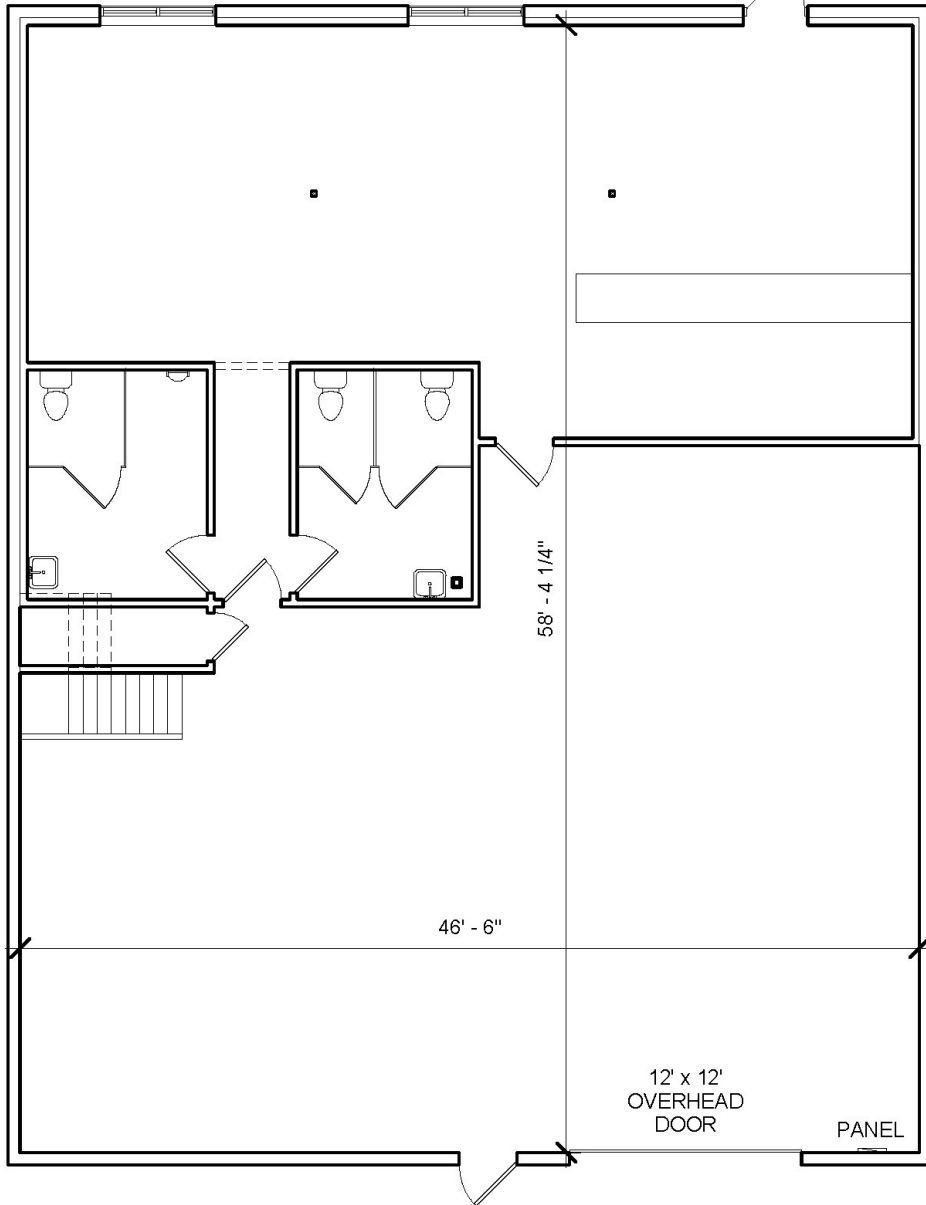




WAREHOUSE AREA:
1,480 GROSS SF

OFFICE AREA:
1,215 GROSS SF

MEZZANINE AREA:
1,233 GROSS SF



WAREHOUSE AREA:
2,497 GROSS SF

OFFICE AREA:
327 GROSS SF

MEZZANINE AREA:
429 GROSS SF

