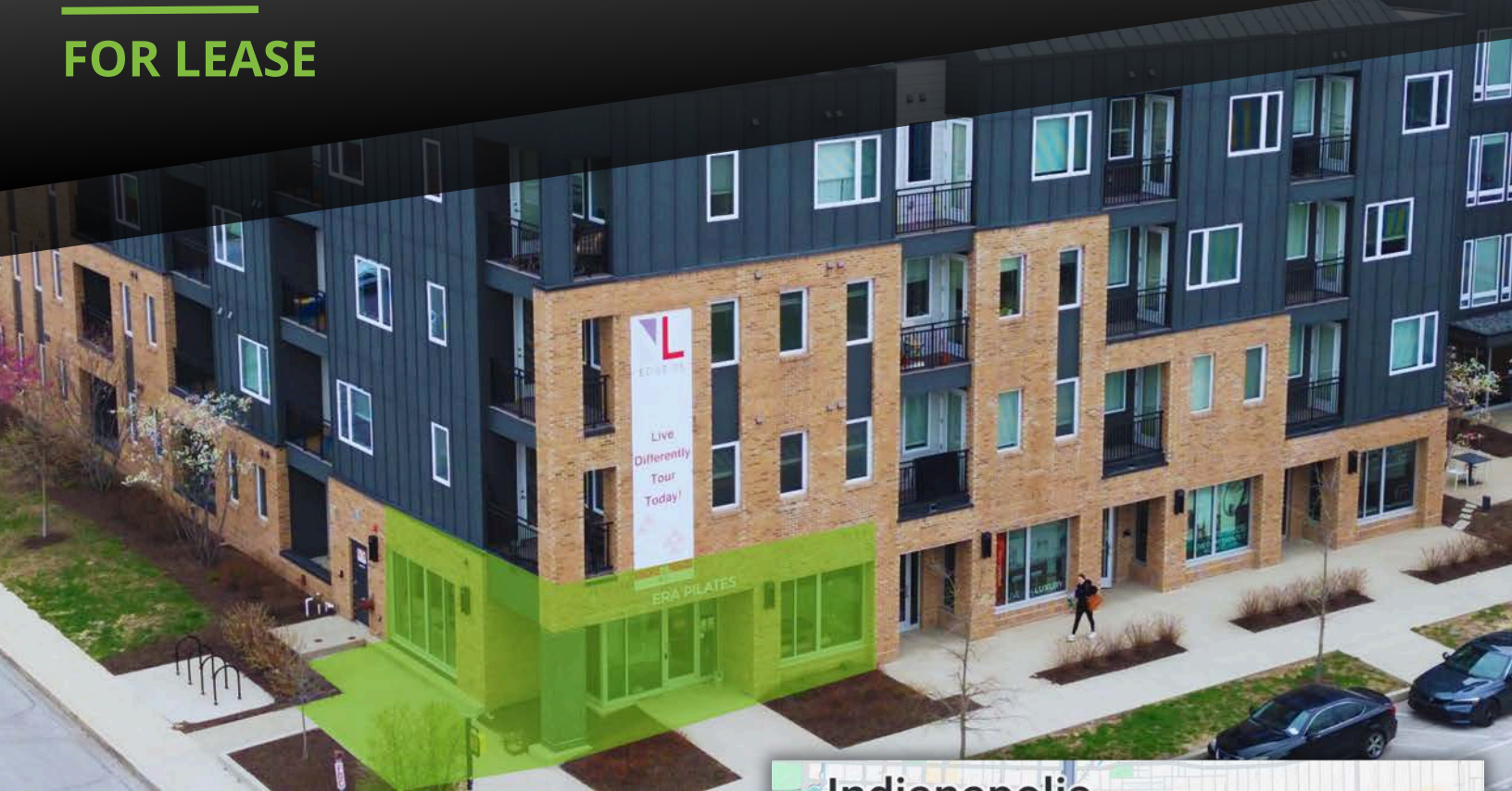


Corner Retail Space in Fountain Square

1224 Prospect Street, Indianapolis, IN 46203

FOR LEASE



Retail Space

754 SF w/Patio Opportunity



VIEW WEBSITE

PROPERTY DESCRIPTION

Presenting a 754 SF retail space located within Edge 35 in the heart of Fountain Square. This highly visible storefront is ideal for boutique retail, specialty services, or experiential concepts looking to tap into one of Indianapolis' most vibrant and creative communities.

The space features large storefront windows, modern finishes and patio potential-perfect for businesses looking to create an indoor/outdoor experience. Positioned within a mixed-use development, this opportunity offers excellent walkability in a highly sought after neighborhood.



DEMOGRAPHICS	0.5 MILES	1 MILE	3 MILES
Total Households	2,082	6,390	46,665
Total Population	4,308	14,287	104,681
Average HH Income	\$113,680	\$90,943	\$77,150

Gary Perel
Principal
Gary@alopg.com
C: 317.698.8446

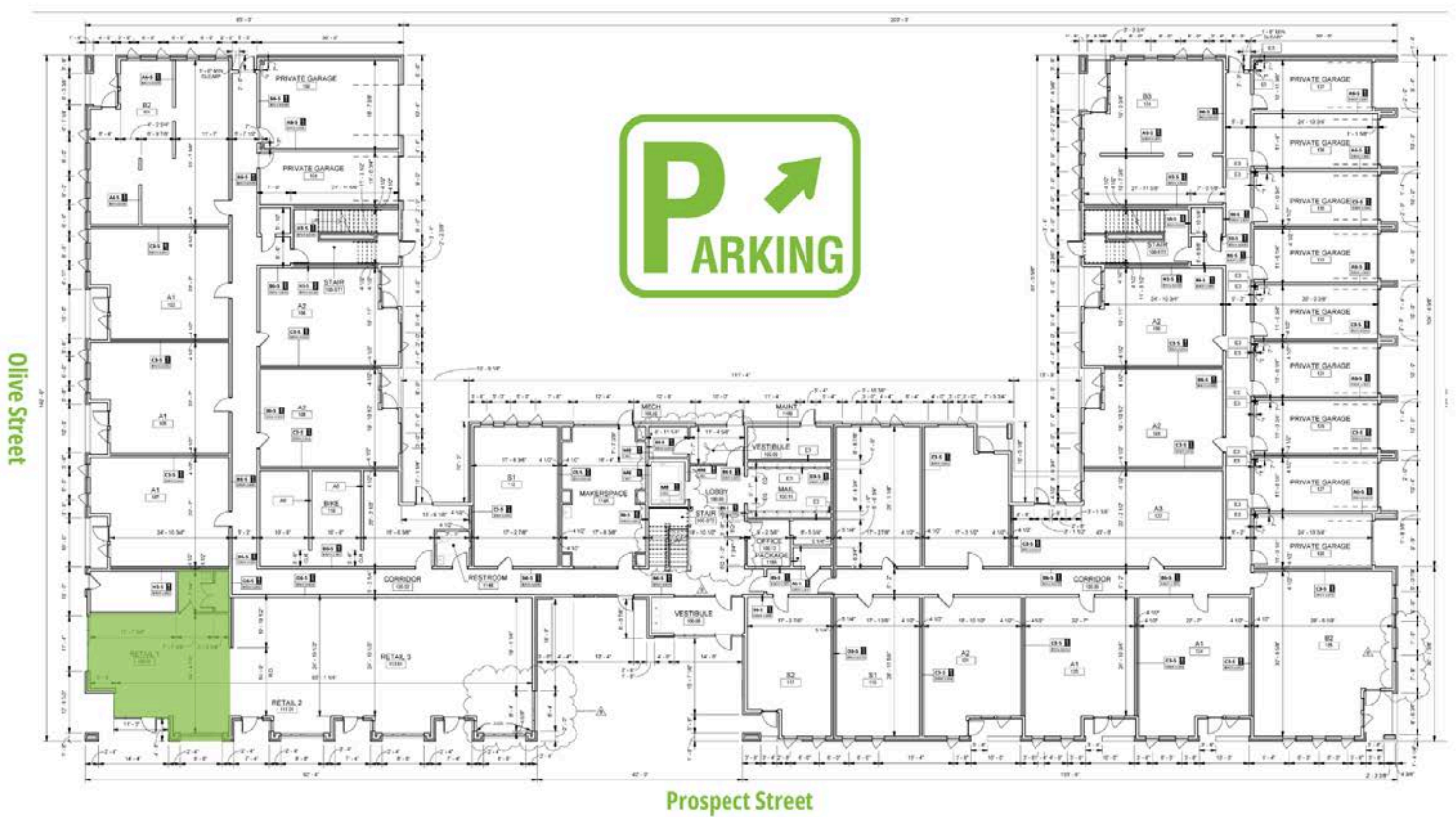
ALO Property Group
9075 N Meridian St, Suite 175
Indianapolis, IN 46260
www.ALOPG.com



Corner Retail Space in Fountain Square

1224 Prospect Street, Indianapolis, IN 46203

SITE PLAN



Gary Perel
Principal
Gary@alopg.com
C: 317.698.8446

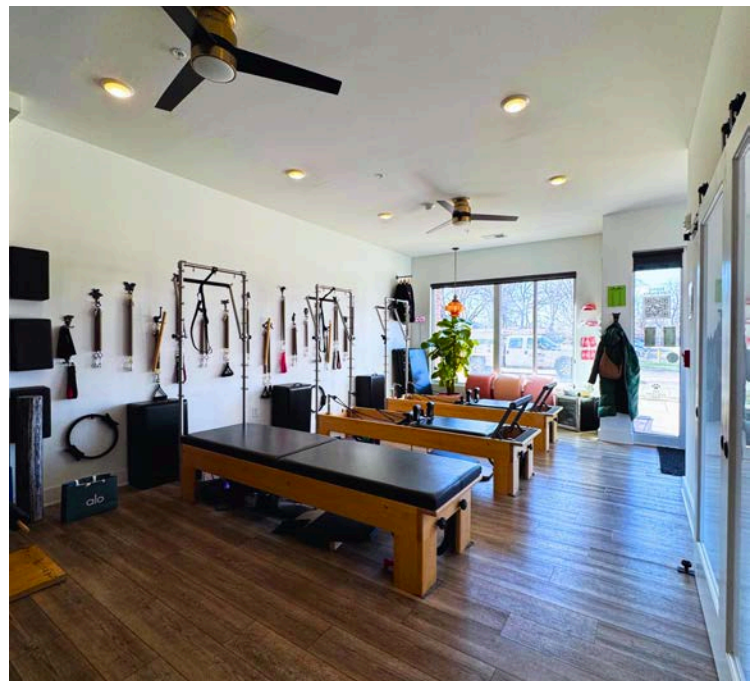
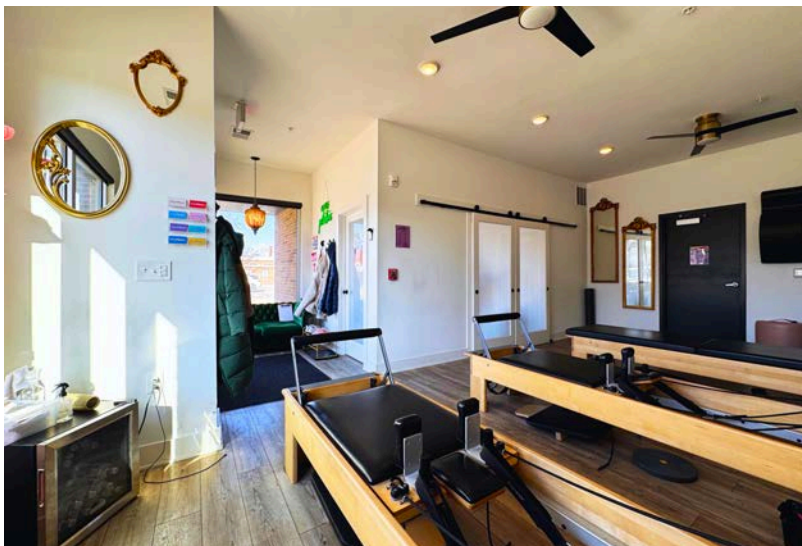
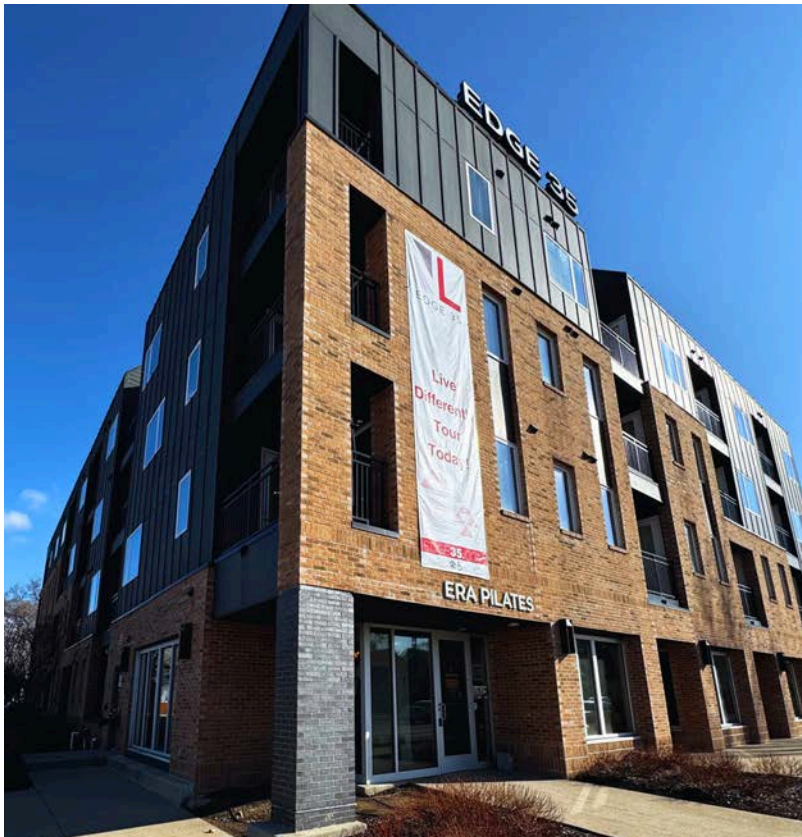
ALO Property Group
9075 N Meridian St, Suite 175
Indianapolis, IN 46260
www.ALOPG.com



Corner Retail Space in Fountain Square

1224 Prospect Street, Indianapolis, IN 46203

SPACE PHOTOS



Gary Perel
Principal
Gary@alopg.com
C: 317.698.8446

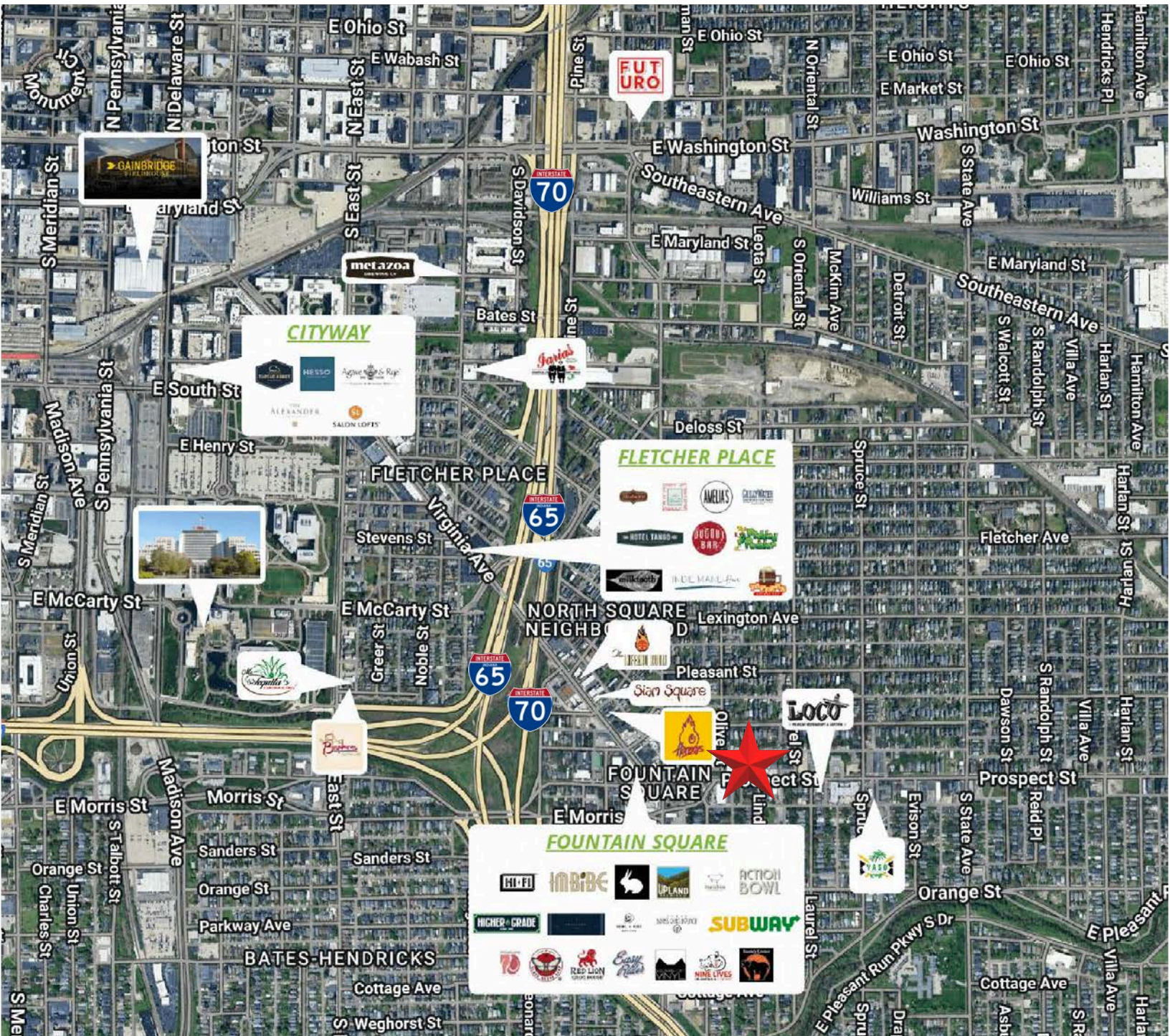
ALO Property Group
9075 N Meridian St, Suite 175
Indianapolis, IN 46260
www.ALOPG.com



Corner Retail Space in Fountain Square

1224 Prospect Street, Indianapolis, IN 46203

RETAIL MAP



Gary Perel
Principal
Gary@alopg.com
C: 317.698.8446

ALO Property Group
9075 N Meridian St, Suite 175
Indianapolis, IN 46260
www.ALOPG.com

