

LEASE

MACDONALD BUILDING

3018 Dixwell Avenue Hamden, CT 06518



PROPERTY DESCRIPTION

Coldwell Banker Commercial is pleased to present 3018 Dixwell Ave in Hamden, available for lease. This 19,075 SF medical office building is conveniently located near I-91 and the Merritt Parkway, offering an ideal setup for medical and professional office users with flexible layouts and spacious offices. The site includes an additional property at 20 School Street, a dedicated parking lot that enhances convenience for staff and patients. Positioned in a vibrant area with direct connectivity to local, regional, and national businesses, 3018 Dixwell Ave provides a strategic, accessible location for any tenant looking in the Hamden market.

OFFERING SUMMARY

Lease Rate:	\$15 - \$20.00 SF/yr (MG +electric)
Available SF:	950 - 12,077 SF
Lot Size:	0.98 Acres
Building Size:	19,075 SF

PROPERTY HIGHLIGHTS

- Prime Medical District: Located in Hamden's prominent medical hub.
- Excellent Access: Near I-91 and Merritt Parkway, ideal for patient and staff convenience.
- Spacious Facility: 19,075 SF with flexible layouts for medical or office use.
- Ample Parking: Sale includes 20 School Street lot for added convenience.
- High Visibility: Close to local, regional, and national businesses.
- Exterior signage available for major tenants

Gary Goodridge
(203)676-6513

Dan Sousa
(203)948-7870



**COLDWELL BANKER
COMMERCIAL**

REALTY

We obtained the information above from sources we believe to be reliable. However, we have not verified its accuracy and make no guarantee, warranty or representation about it. It is submitted subject to the possibility of errors, omissions, change of price, rental or other conditions, prior sale, lease or financing, or withdrawal without notice. We include projections, opinions, assumptions or estimates for example only, and they may not represent current or future performance of the property. You and your tax and legal advisors should conduct your own investigation of the property and transaction.

LEASE

MACDONALD BUILDING

3018 Dixwell Avenue Hamden, CT 06518



Gary Goodridge
(203)676-6513

Dan Sousa
(203)948-7870



COLDWELL BANKER
COMMERCIAL | **REALTY**

We obtained the information above from sources we believe to be reliable. However, we have not verified its accuracy and make no guarantee, warranty or representation about it. It is submitted subject to the possibility of errors, omissions, change of price, rental or other conditions, prior sale, lease or financing, or withdrawal without notice. We include projections, opinions, assumptions or estimates for example only, and they may not represent current or future performance of the property. You and your tax and legal advisors should conduct your own investigation of the property and transaction.

LEASE

MACDONALD BUILDING

3018 Dixwell Avenue Hamden, CT 06518



LEASE INFORMATION

Lease Type:	MG	Lease Term:	5-7 years
Total Space:	950 - 12,077 SF	Lease Rate:	\$15.00 - \$20.00 SF/yr

AVAILABLE SPACES

SUITE	TENANT	SIZE (SF)	LEASE TYPE	LEASE RATE	DESCRIPTION
2A	Available	1,075 - 4,875 SF	Modified Gross	\$20.00 SF/yr	-
2B	Available	2,710 - 4,875 SF	Modified Gross	\$20.00 SF/yr	-
3A	Available	950 - 4,875 SF	Modified Gross	\$20.00 SF/yr	3 Private Offices Storage Open Work Space
3B	Available	1,770 - 4,875 SF	Modified Gross	\$20.00 SF/yr	4 Private Offices Large Open Workspace
3C	Available	1,076 - 4,875 SF	Modified Gross	\$20.00 SF/yr	Former Blood Draw 4 Exam Room, Lab/Prep Room ADA Bathroom in Suite Reception and waiting area
Lower Level	Available	2,327 SF	Modified Gross	\$15.00 SF/yr	-

Gary Goodridge
(203)676-6513

Dan Sousa
(203)948-7870

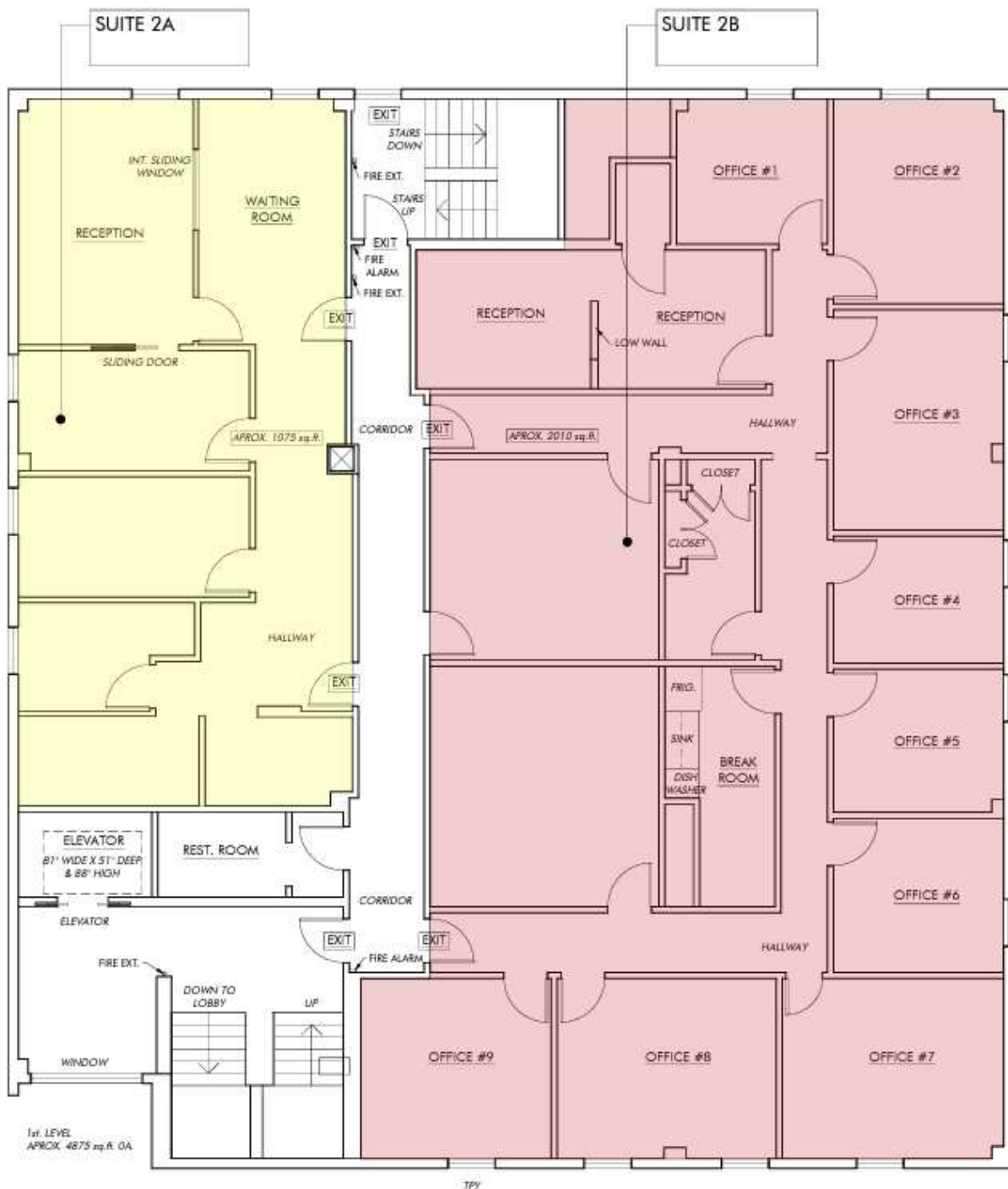


We obtained the information above from sources we believe to be reliable. However, we have not verified its accuracy and make no guarantee, warranty or representation about it. It is submitted subject to the possibility of errors, omissions, change of price, rental or other conditions, prior sale, lease or financing, or withdrawal without notice. We include projections, opinions, assumptions or estimates for example only, and they may not represent current or future performance of the property. You and your tax and legal advisors should conduct your own investigation of the property and transaction.

LEASE

MACDONALD BUILDING

3018 Dixwell Avenue Hamden, CT 06518



Gary Goodridge
(203)676-6513

Dan Sousa
(203)948-7870



**COLDWELL BANKER
COMMERCIAL**

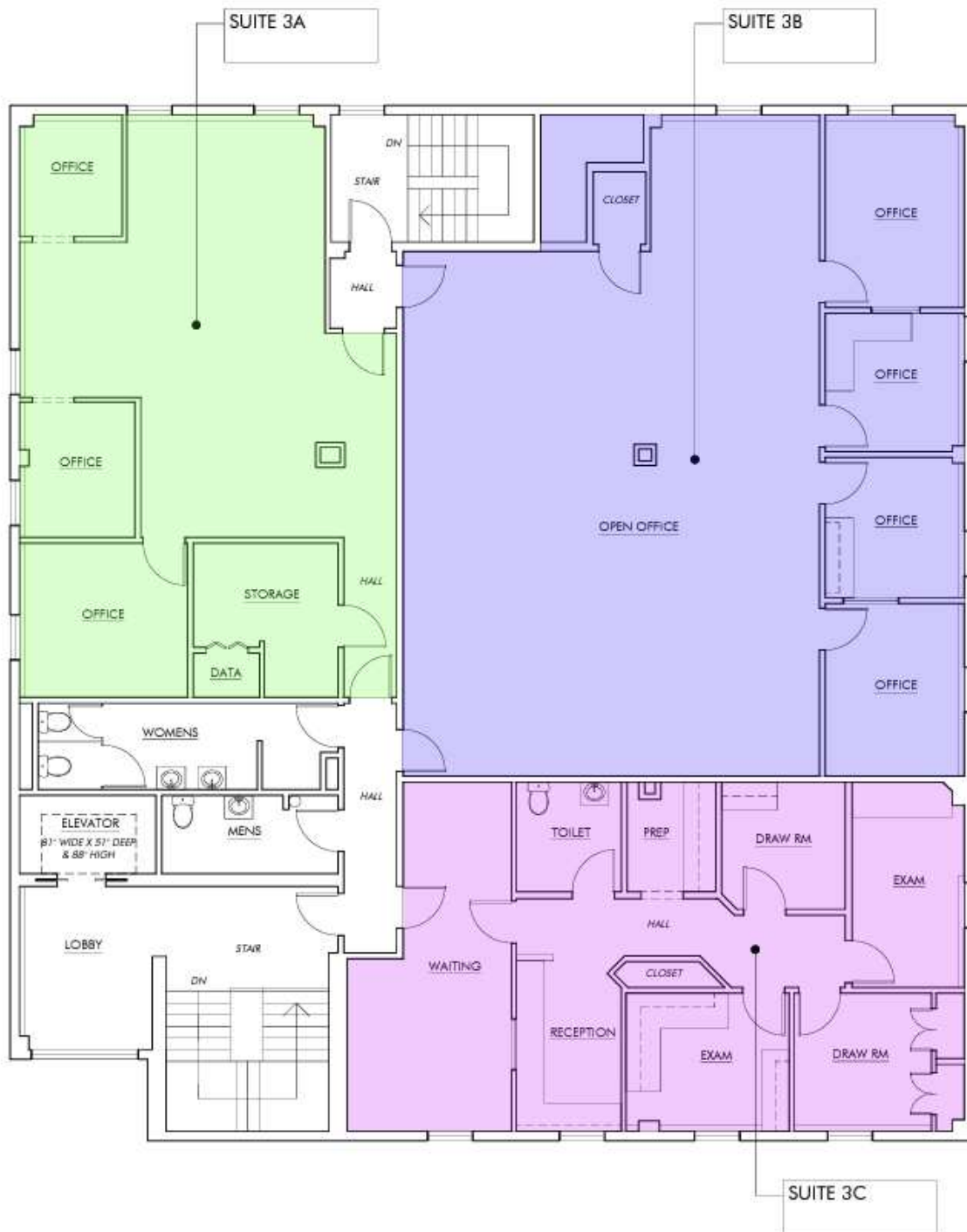
REALTY

We obtained the information above from sources we believe to be reliable. However, we have not verified its accuracy and make no guarantee, warranty or representation about it. It is submitted subject to the possibility of errors, omissions, change of price, rental or other conditions, prior sale, lease or financing, or withdrawal without notice. We include projections, opinions, assumptions or estimates for example only, and they may not represent current or future performance of the property. You and your tax and legal advisors should conduct your own investigation of the property and transaction.

LEASE

MACDONALD BUILDING

3018 Dixwell Avenue Hamden, CT 06518



Gary Goodridge
(203)676-6513

Dan Sousa
(203)948-7870



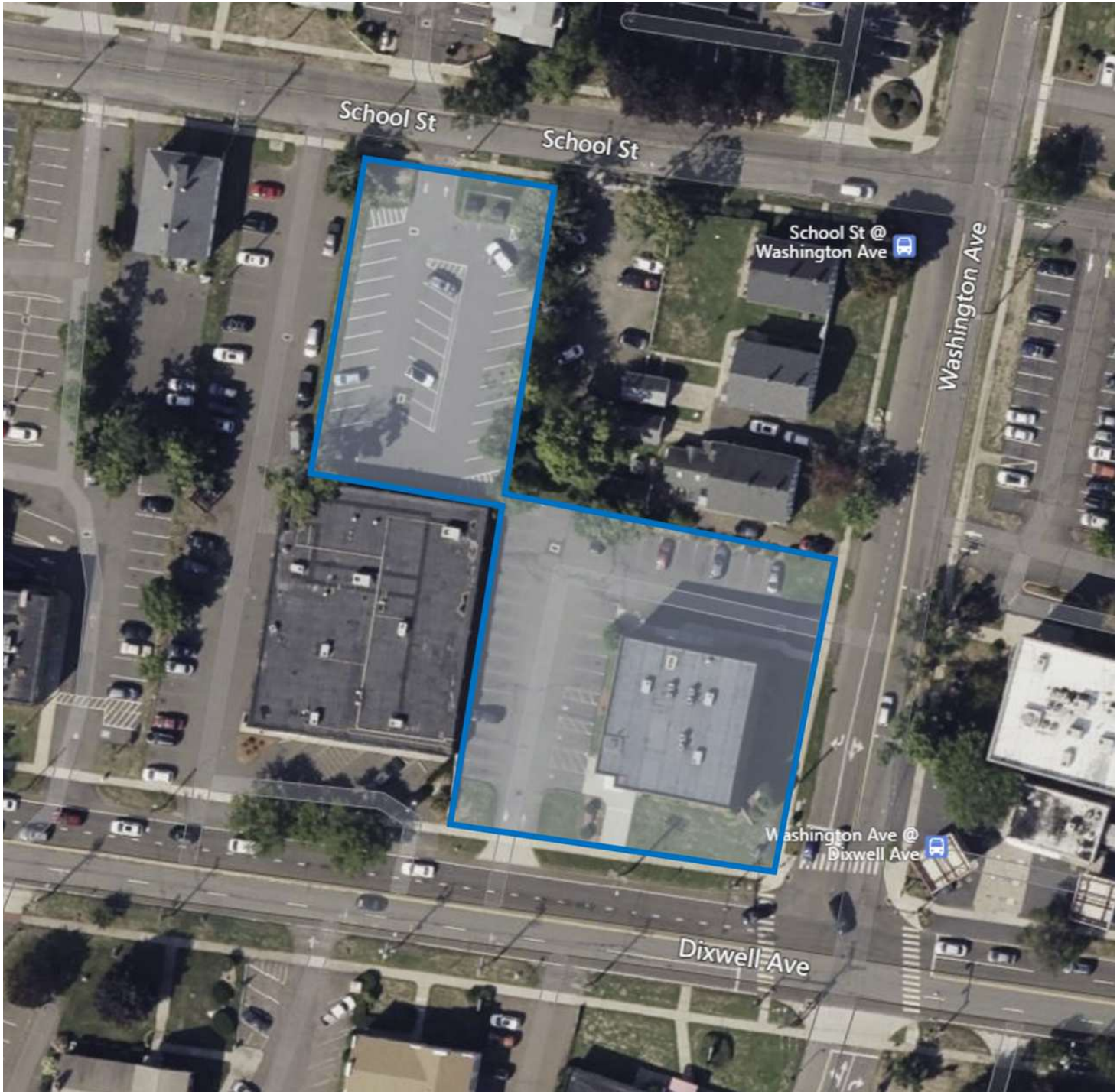
COLDWELL BANKER
COMMERCIAL | **REALTY**

We obtained the information above from sources we believe to be reliable. However, we have not verified its accuracy and make no guarantee, warranty or representation about it. It is submitted subject to the possibility of errors, omissions, change of price, rental or other conditions, prior sale, lease or financing, or withdrawal without notice. We include projections, opinions, assumptions or estimates for example only, and they may not represent current or future performance of the property. You and your tax and legal advisors should conduct your own investigation of the property and transaction.

LEASE

MACDONALD BUILDING

3018 Dixwell Avenue Hamden, CT 06518



Gary Goodridge
(203)676-6513

Dan Sousa
(203)948-7870



**COLDWELL BANKER
COMMERCIAL**

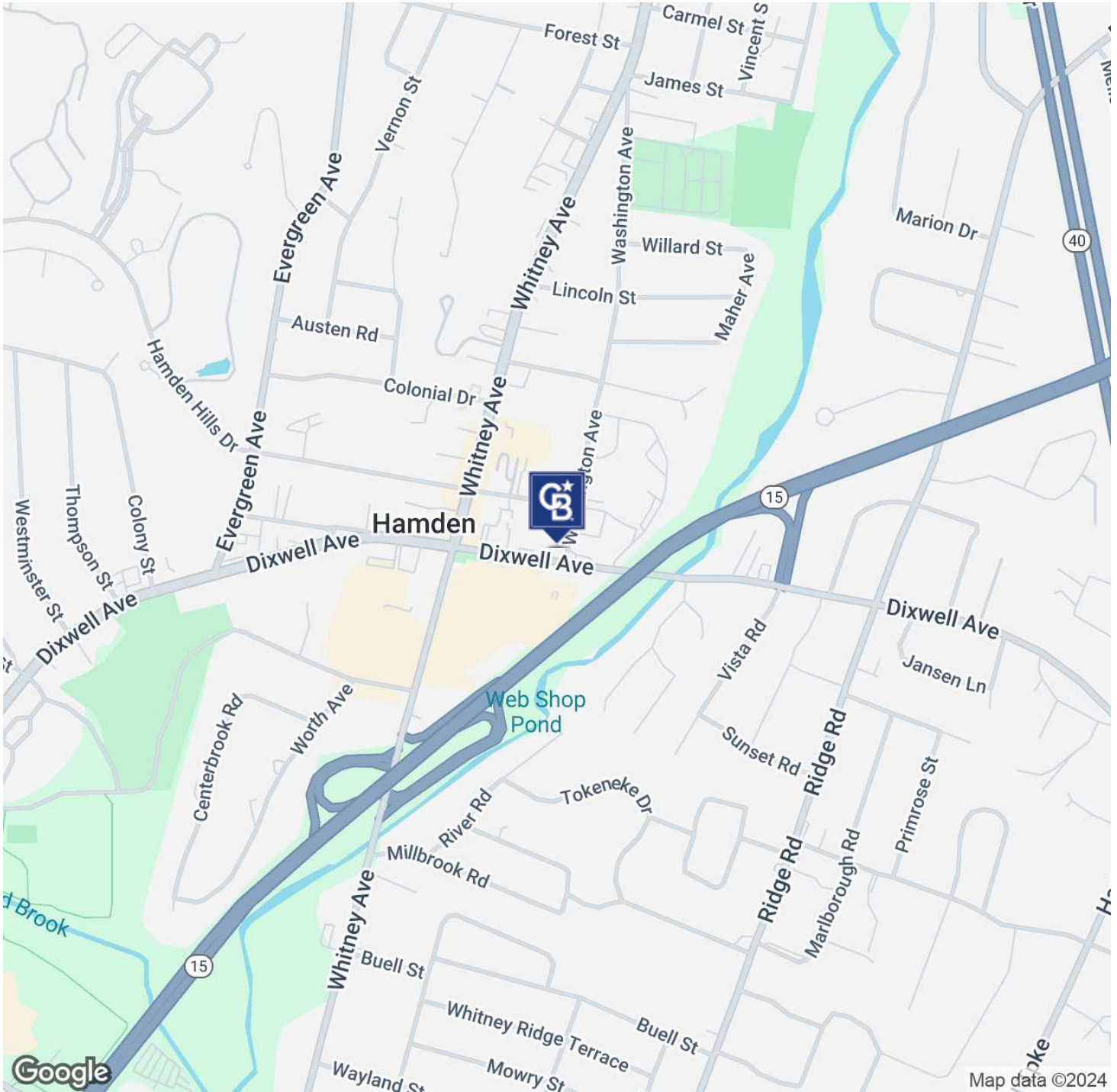
REALTY

We obtained the information above from sources we believe to be reliable. However, we have not verified its accuracy and make no guarantee, warranty or representation about it. It is submitted subject to the possibility of errors, omissions, change of price, rental or other conditions, prior sale, lease or financing, or withdrawal without notice. We include projections, opinions, assumptions or estimates for example only, and they may not represent current or future performance of the property. You and your tax and legal advisors should conduct your own investigation of the property and transaction.

LEASE

MACDONALD BUILDING

3018 Dixwell Avenue Hamden, CT 06518



Gary Goodridge
(203)676-6513

Dan Sousa
(203)948-7870



**COLDWELL BANKER
COMMERCIAL**

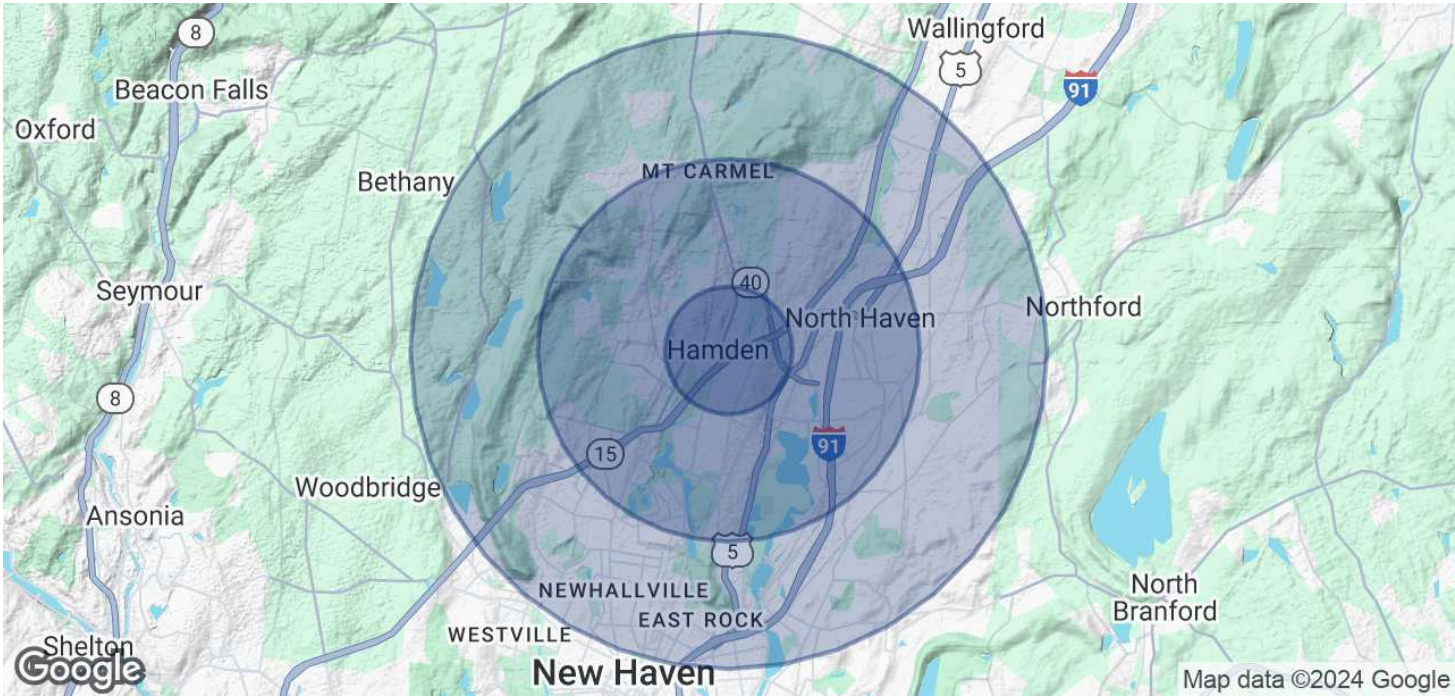
REALTY

We obtained the information above from sources we believe to be reliable. However, we have not verified its accuracy and make no guarantee, warranty or representation about it. It is submitted subject to the possibility of errors, omissions, change of price, rental or other conditions, prior sale, lease or financing, or withdrawal without notice. We include projections, opinions, assumptions or estimates for example only, and they may not represent current or future performance of the property. You and your tax and legal advisors should conduct your own investigation of the property and transaction.

LEASE

MACDONALD BUILDING

3018 Dixwell Avenue Hamden, CT 06518



POPULATION	1 MILE	3 MILES	5 MILES
	10,357	56,378	162,340
	45	43	40
	43	42	39
	47	44	41
HOUSEHOLDS & INCOME	1 MILE	3 MILES	5 MILES
	4,679	22,774	63,345
	2.2	2.5	2.6
	\$139,517	\$136,626	\$110,395
	\$322,131	\$351,280	\$380,579

Demographics data derived from AlphaMap

Gary Goodridge

(203)676-6513

Dan Sousa

(203)948-7870

COLDWELL BANKER
COMMERCIAL
REALTY

We obtained the information above from sources we believe to be reliable. However, we have not verified its accuracy and make no guarantee, warranty or representation about it. It is submitted subject to the possibility of errors, omissions, change of price, rental or other conditions, prior sale, lease or financing, or withdrawal without notice. We include projections, opinions, assumptions or estimates for example only, and they may not represent current or future performance of the property. You and your tax and legal advisors should conduct your own investigation of the property and transaction.

LEASE

MACDONALD BUILDING

3018 Dixwell Avenue Hamden, CT 06518

Gary Goodridge
(203)676-6513

Dan Sousa
(203)948-7870



We obtained the information above from sources we believe to be reliable. However, we have not verified its accuracy and make no guarantee, warranty or representation about it. It is submitted subject to the possibility of errors, omissions, change of price, rental or other conditions, prior sale, lease or financing, or withdrawal without notice. We include projections, opinions, assumptions or estimates for example only, and they may not represent current or future performance of the property. You and your tax and legal advisors should conduct your own investigation of the property and transaction.