

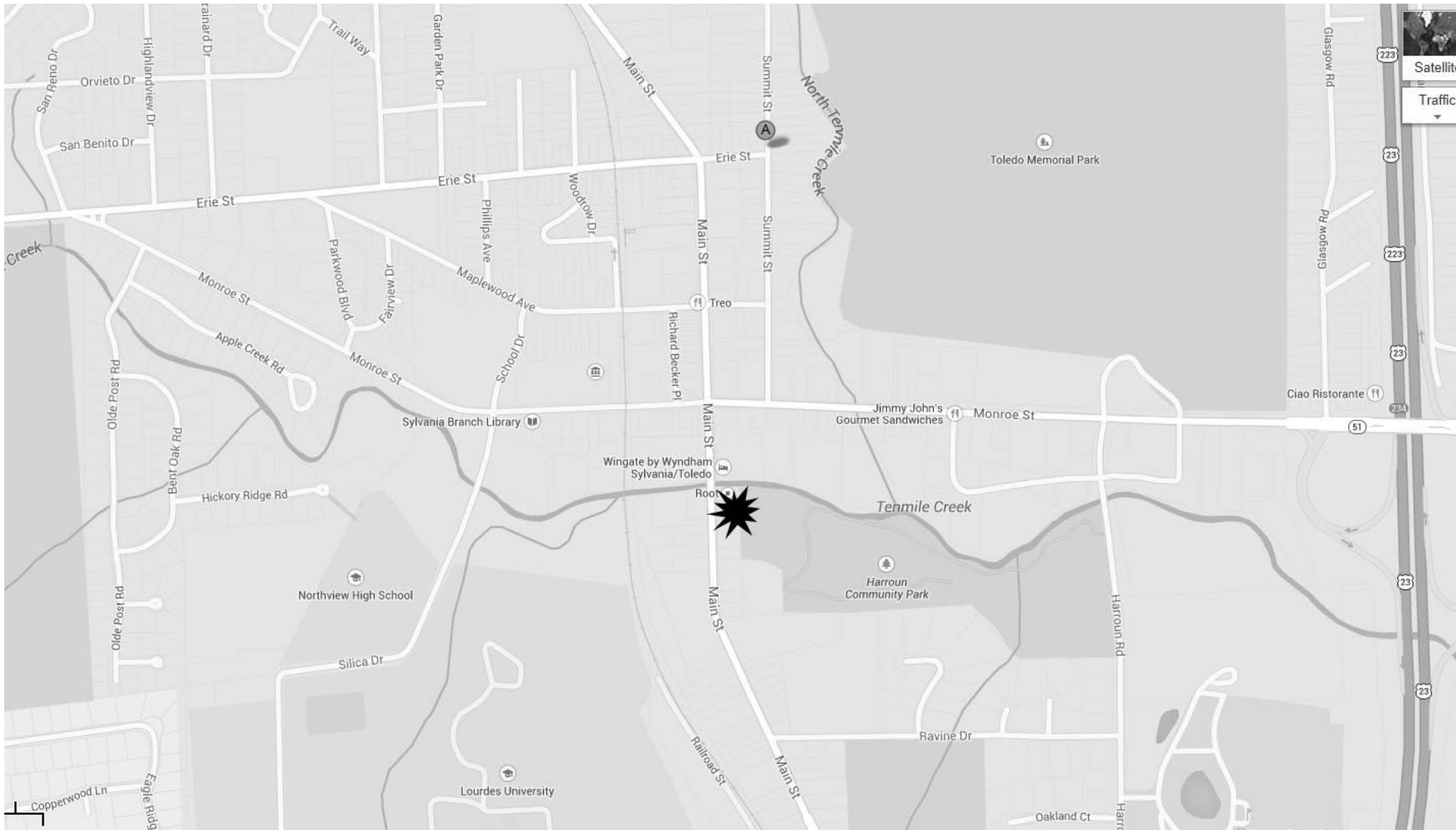
Root Inc

5470 Erie Street, Sylvania OH 43560



architecture | landscape architecture
interior design | planning | graphic design

500 Madison Avenue, Toledo, Ohio 43604
419.242.7405 thecollaborativeinc.com

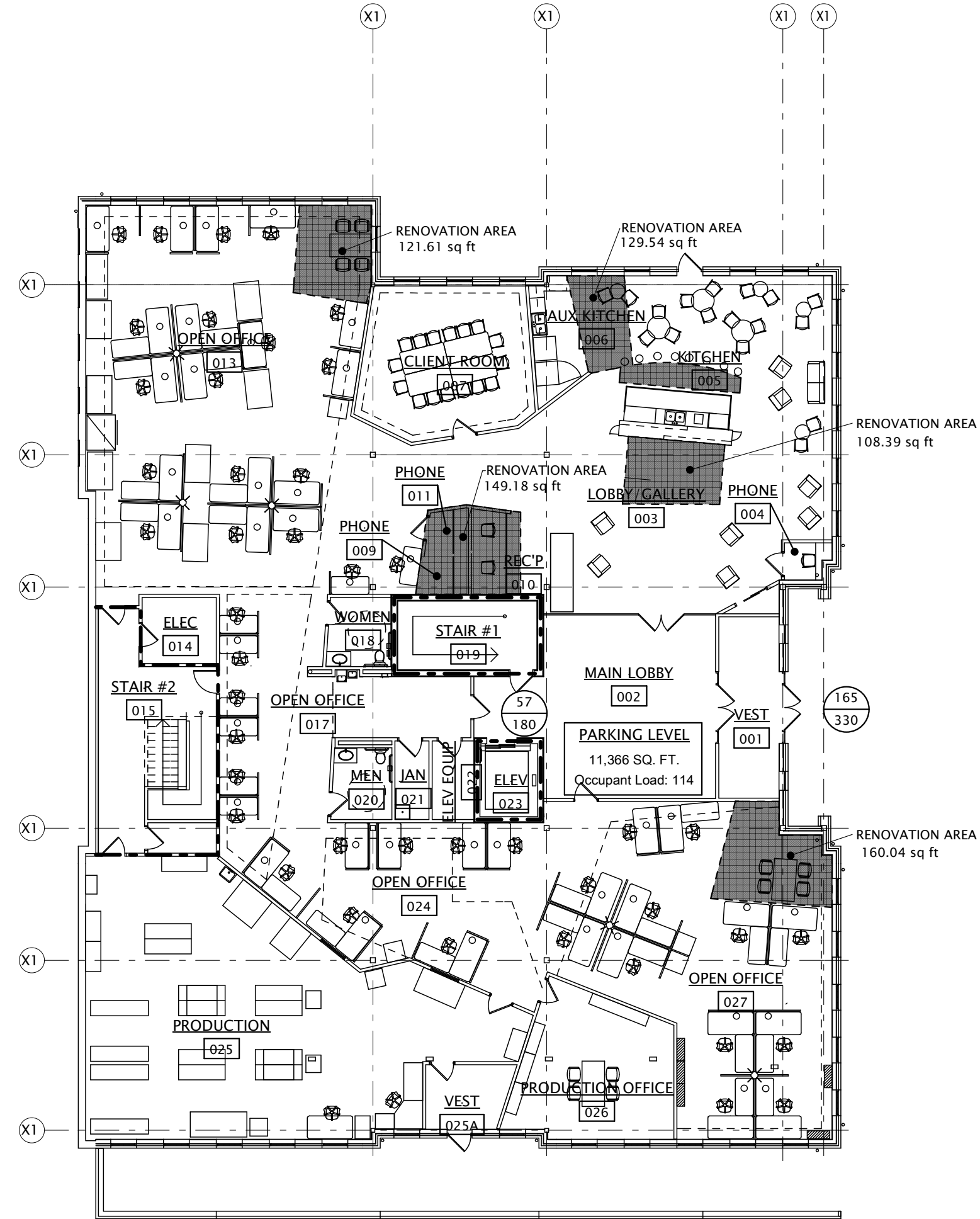


INDEX OF DRAWINGS

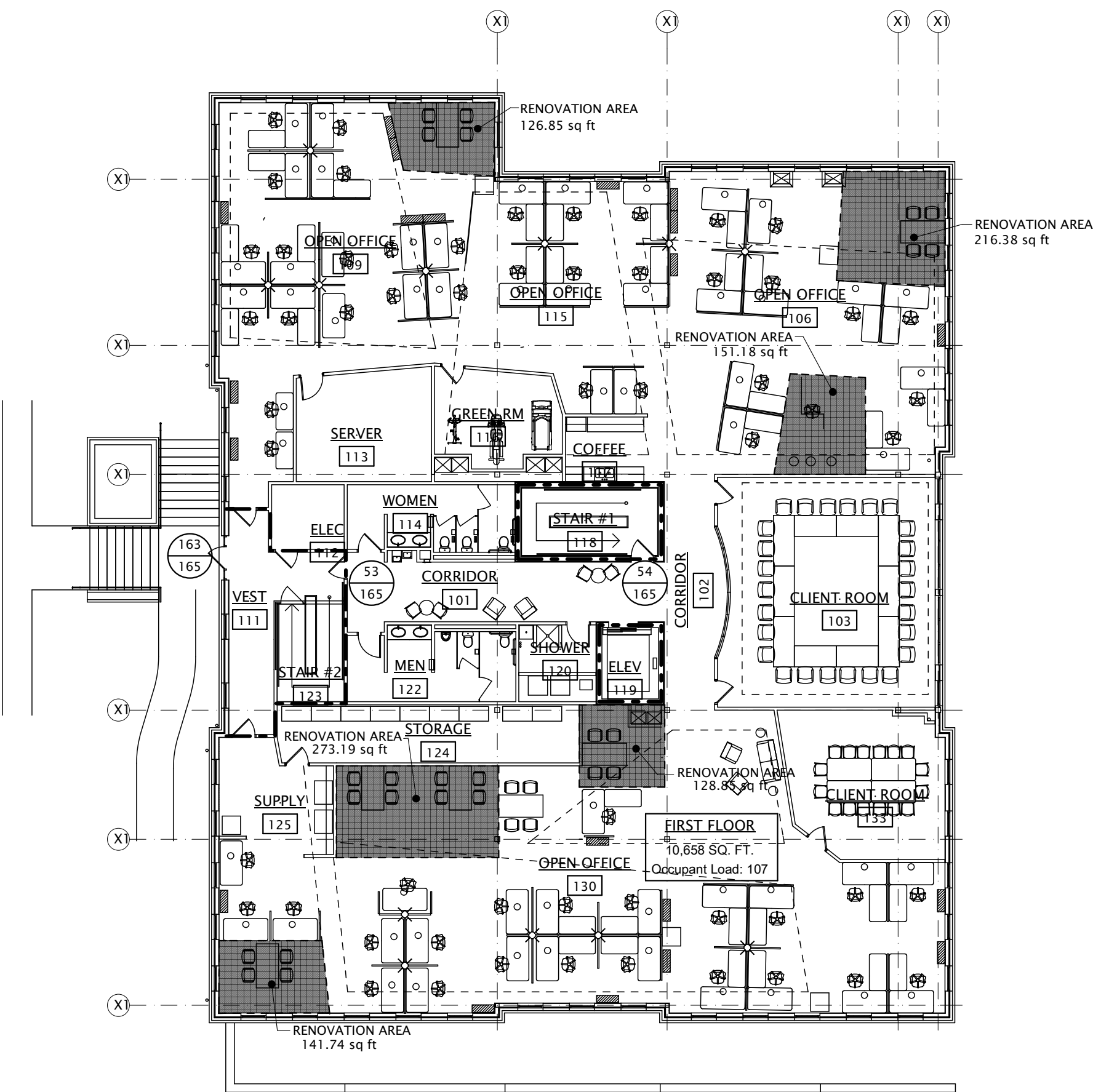
G-1	LIFE SAFETY PLAN
A-1	PARK LEVEL DEMOLITION AND FLOOR PLAN
A-2	FIRST FLOOR DEMOLITION AND FLOOR PLAN
A-3	SECOND FLOOR DEMOLITION AND FLOOR PLAN
A-4	PARK LEVEL FLOOR RCP
A-5	FIRST FLOOR RCP
A-6	SECOND FLOOR RCP



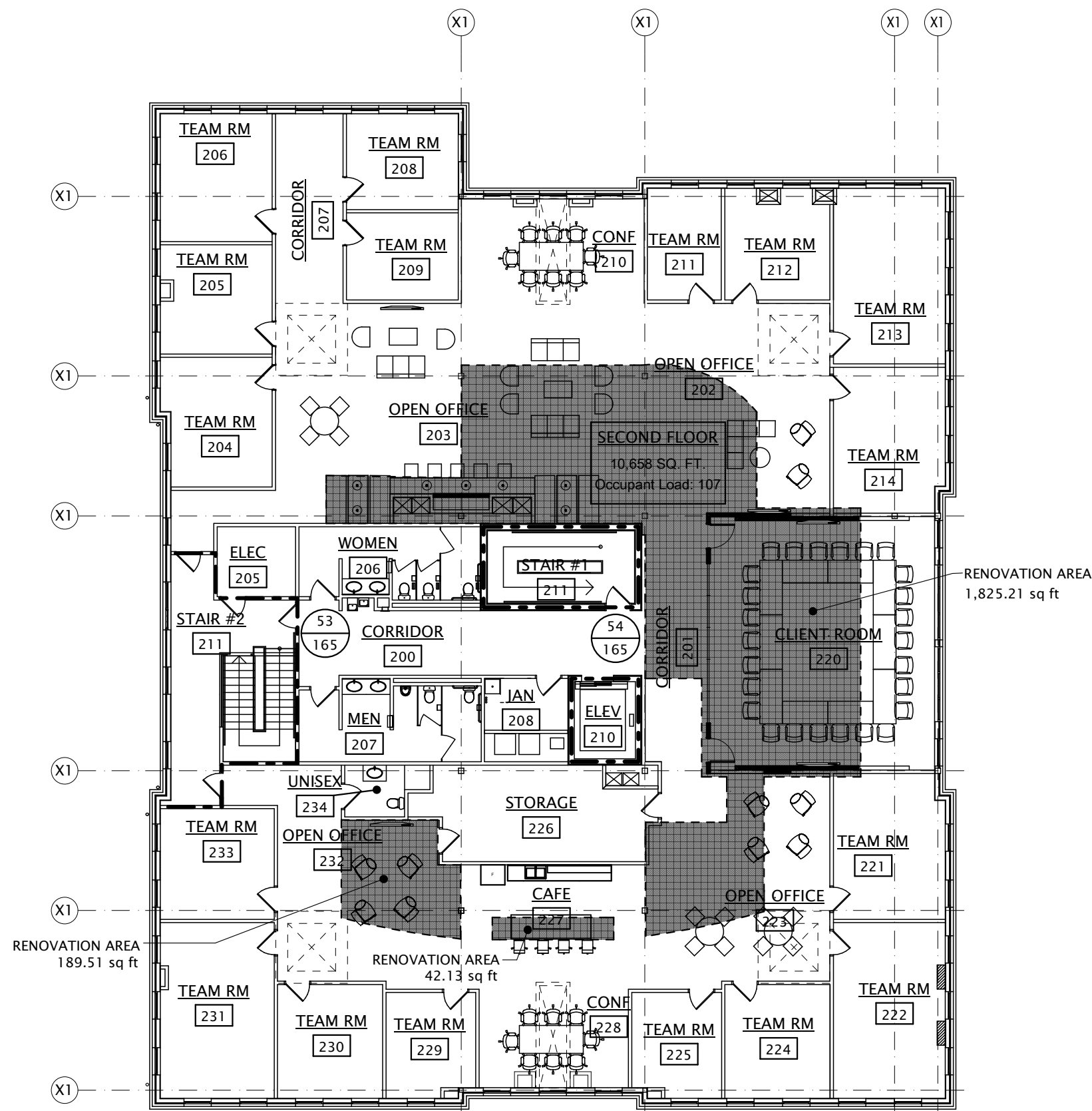
Dan J. Tabor, License #07094
Expiration Date 12/31/2015



C7
G-1
PARK LEVEL LIFE SAFETY PLAN
SCALE: 1/16" = 1'-0"



C5
G-1
FIRST FLOOR LIFE SAFETY PLAN
SCALE: 1/16" = 1'-0"



A5
G-1
SECOND FLOOR LIFE SAFETY PLAN
SCALE: 1/16" = 1'-0"

January 24, 2007

Mr. John Walters, Chief Building Official
Lucas County Building Regulations
1115 S. McCord Rd.
Holland, OH 43528-9596

Re: Request for Appeal Hearing
Correction Letter 2007000064-1
Interior Alterations
Com Int/Alt Fl #1
5470 Main St. South
Root Learning Inc.
Sylvania, OH

Dear John:

We wish to appeal the following items listed in the above Correction Letter. Copy of Correction Letter is attached.

Enclosure walls at Main Lobby
Items: B1, B2, B3, B11, B18, B26

The purpose of the appeal is to eliminate the 1 hour enclosure walls at the Main Lobby and substitute a limited area sprinkler system in its place. The proposed tenant wishes to replace the existing enclosure wall with an all glass entrance to highlight the entry to their space.

The Main Lobby will be kept free and clear of any furniture or obstructions and will maintain the egress travel path as required.

Enclosure walls at second floor elevator Lobby/exit corridor
Items: B6, B25

The purpose of this appeal request is to just open the space at the east end. The remaining fire separation walls at this area will remain as existing. As this tenant is occupying the entire floor, and exit access is not through this corridor area, opening of this area does not create an adverse condition.

See enclosed sketches of existing conditions and proposed new layouts.

Enclosed please find our appeal fee of \$200 for this request.

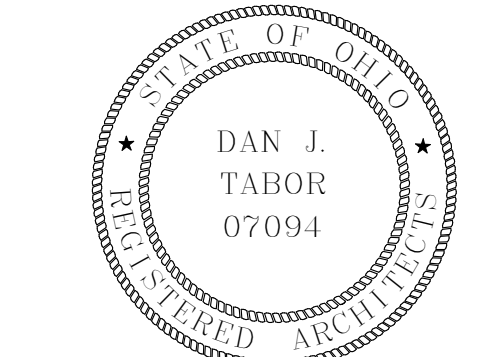
Sincerely,

Dan J. Tabor, AIA
Architect/Partner
Enclosures
DJT:sjk
105583

CODE INFORMATION	
28 CONSTRUCTION	
B USE GROUP	
ONE TENANT BUILDING	
3764 TOTAL SQUARE FEET OF RENOVATED AREA	
APPEAL VARIANCE TO ELIMINATE 1 HOUR ENCLOSURE WALLS AT THE MAIN LOBBY 002	
SUBSTITUTE A LIMITED AREA SPRINKLER SYSTEM IN ITS PLACE WAS GRANTED	
COPY OF APPEAL EXPLANATION ATTACHED	
LEGEND	
	EXISTING 1 HOUR WALL
	REQUIRED OCCUPANT LOAD FOR THIS EXIT
	PROVIDED OCCUPANT LOAD FOR THIS EXIT



THE COLLABORATIVE
architecture | landscape architecture
interior design | planning | graphic design
500 Madison Avenue, Toledo, Ohio 43604
419.242.7405 thecollaborativeinc.com



Dan J. Tabor, License #07094
Expiration Date 12/31/2015

KEY PLAN
N.T.S.

PROJECT TITLE
Interiors Project for:
ROOT LEARNING INC.
5470 SOUTH MAIN STREET
SYLVANIA, OHIO 43560

10.24.2014 ISSUED FOR PERMITS

CHECKED
APPROVED

TCI JOB NO. 106223

SHEET TITLE
**LIFE SAFETY
PLANS**

SHEET NO.
G-1

(B7/A-1)

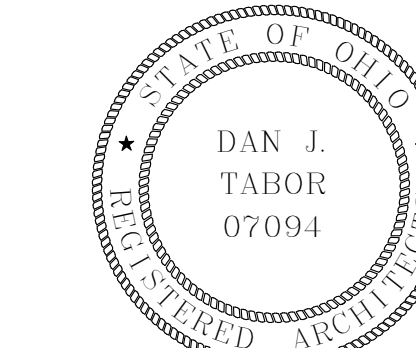


(B4)
(A-1)



THE COLLABORATIVE
architecture | landscape architecture
interior design | planning | graphic design

500 Madison Avenue, Toledo, Ohio 43604
419.242.7405 thecollaborativeinc.com



Dan J. Tabor, License #07094
Expiration Date 12/31/2015

KEY PLAN
N.T.S.

PROJECT TITLE

Interiors Project for:
ROOT LEARNING INC.
5470 SOUTH MAIN STREET
SYLVANIA, OHIO 43560

10.24.2014	ISSUED FOR PERMITS
------------	--------------------

CHECKED

APPROVED

TCI JOB NO. 106223

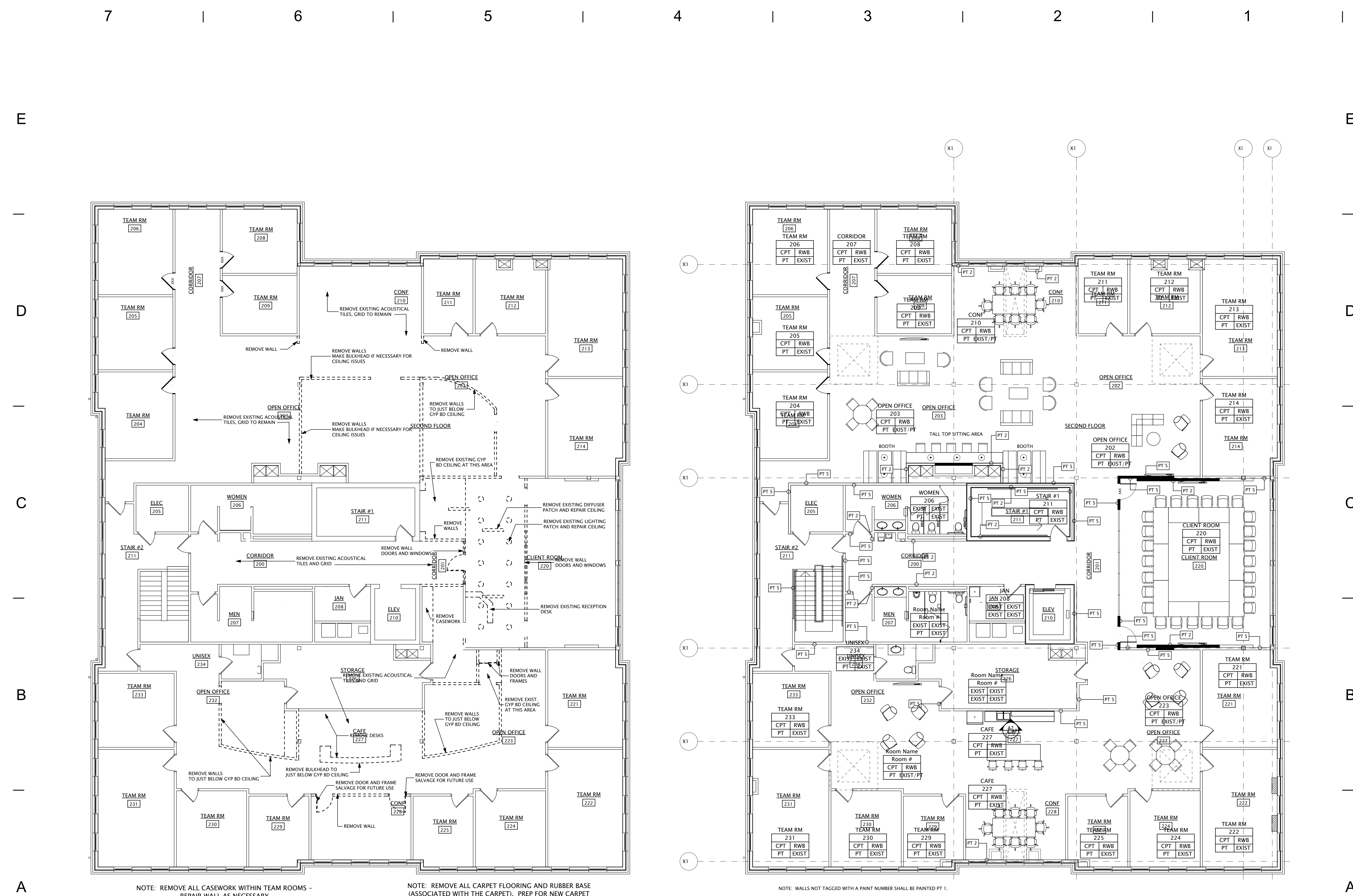
SHEET TITLE

PARKING LEVEL DEMOLITION AND FLOOR PLAN

SHEET NO.

A-1

Printed 11/14/2014



THE COLLABORATIVE
architecture | landscape architecture
interior design | planning | graphic design
500 Madison Avenue, Toledo, Ohio 43604
419.242.7405 thecollaborativeinc.com

DAN J. TABOR
07094
Dan J. Tabor, License #07094
Expiration Date 12/31/2015

KEY PLAN
N.T.S.

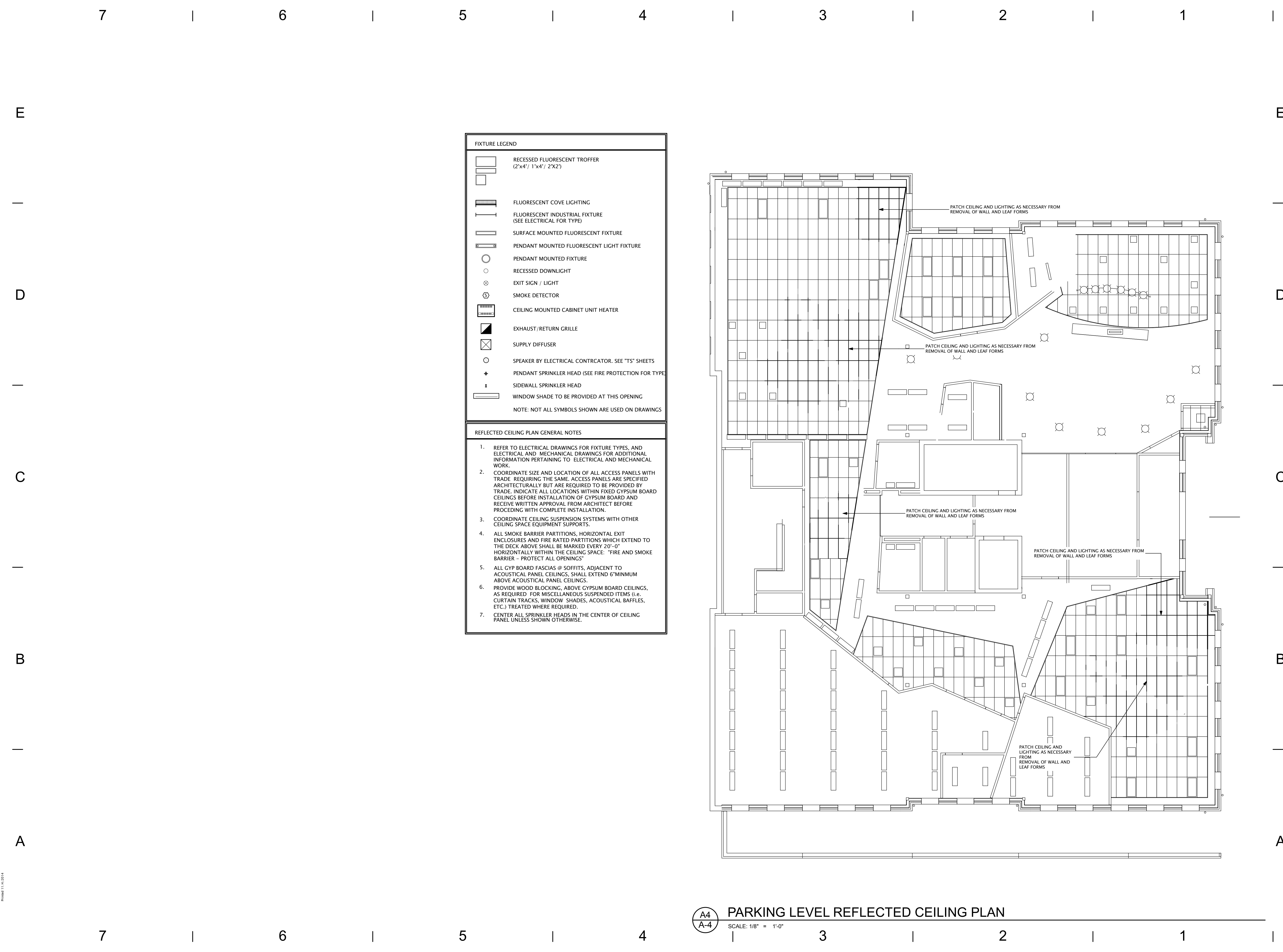
PROJECT TITLE
Interiors Project for:
ROOT LEARNING INC.
5470 SOUTH MAIN STREET
SYLVANIA, OHIO 43560

CHECKED
APPROVED

TCI JOB NO. 106223

SHEET TITLE
**SECOND FLOOR
DEMOLITION AND
FLOOR PLAN**

SHEET NO.
A-3



FIXTURE LEGEND

RECESSED FLUORESCENT TROFFER
(2'x4' / 1'x4' / 2'x2')

FLUORESCENT COVE LIGHTING

FLUORESCENT INDUSTRIAL FIXTURE
(SEE ELECTRICAL FOR TYPE)

SURFACE MOUNTED FLUORESCENT FIXTURE

PENDANT MOUNTED FLUORESCENT LIGHT FIXTURE

PENDANT MOUNTED FIXTURE

RECESSED DOWNLIGHT

EXIT SIGN / LIGHT

SMOKE DETECTOR

CEILING MOUNTED CABINET UNIT HEATER

EXHAUST/RETURN GRILLE

SUPPLY DIFFUSER

SPEAKER BY ELECTRICAL CONTRCATOR. SEE "TS" SHEETS

PENDANT SPRINKLER HEAD (SEE FIRE PROTECTION FOR TYPE)

SIDEWALL SPRINKLER HEAD

WINDOW SHADE TO BE PROVIDED AT THIS OPENING

NOTE: NOT ALL SYMBOLS SHOWN ARE USED ON DRAWINGS

REFLECTED CEILING PLAN GENERAL NOTES

1. REFER TO ELECTRICAL DRAWINGS FOR FIXTURE TYPES, AND ELECTRICAL AND MECHANICAL DRAWINGS FOR ADDITIONAL INFORMATION PERTAINING TO ELECTRICAL AND MECHANICAL WORK.

2. COORDINATE SIZE AND LOCATION OF ALL ACCESS PANELS WITH TRADE. REQUIRING THE SAME. ACCESS PANELS ARE SPECIFIED ARCHITECTURALLY BUT ARE REQUIRED TO BE PROVIDED BY TRADE. INDICATE ALL LOCATIONS WITHIN FIXED GYPSUM BOARD CEILINGS BEFORE INSTALLATION OF GYPSUM BOARD AND RECEIVE WRITTEN APPROVAL FROM ARCHITECT BEFORE PROCEEDING WITH COMPLETE INSTALLATION.

3. COORDINATE CEILING SUSPENSION SYSTEMS WITH OTHER CEILING SPACE EQUIPMENT SUPPORTS.

4. ALL SMOKE BARRIER PARTITIONS, HORIZONTAL EXIT ENCLOSURES AND FIRE RATED PARTITIONS WHICH EXTEND TO THE DECK ABOVE SHALL BE MARKED EVERY 20'-0" HORIZONTALLY WITHIN THE CEILING SPACE. "FIRE AND SMOKE BARRIER - PROTECT ALL OPENINGS"

5. ALL GYP BOARD FASCIAS @ SOFFITS, ADJACENT TO ACOUSTICAL PANEL CEILINGS, SHALL EXTEND 6"MINMUM ABOVE ACOUSTICAL PANEL CEILINGS.

6. PROVIDE WOOD BLOCKING, ABOVE GYPSUM BOARD CEILINGS, AS REQUIRED FOR MISCELLANEOUS SUSPENDED ITEMS (i.e. CURTAIN TRACKS, WINDOW SHADES, ACOUSTICAL BAFFLES, ETC.) TREATED WHERE REQUIRED.

7. CENTER ALL SPRINKLER HEADS IN THE CENTER OF CEILING PANEL UNLESS SHOWN OTHERWISE.

THE COLLABORATIVE

architecture | landscape architecture
interior design | planning | graphic design
500 Madison Avenue, Toledo, Ohio 43604
419.242.7405 thecollaborativeinc.com

STATE OF OHIO
REGISTERED ARCHITECT
DAN J. TABOR
07094

Dan J. Tabor, License #07094
Expiration Date 12/31/2015

KEY PLAN
N.T.S.

PROJECT TITLE
Interiors Project for:
ROOT LEARNING INC.
5470 SOUTH MAIN STREET
SYLVANIA, OHIO 43560

10.24.2014 ISSUED FOR PERMITS

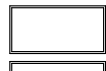
CHECKED
APPROVED
TCI JOB NO. 106223

SHEET TITLE
**PARK LEVEL
FLOOR RCP**


SHEET NO.
A-4

Printed 11/14/2014

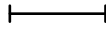
FIXTURE LEGEND




RECESSED FLUORESCENT TROFFER
(2'x4' / 1'x4' / 2'x2')



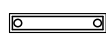
FLUORESCENT COVE LIGHTING




FLUORESCENT INDUSTRIAL FIXTURE
(SEE ELECTRICAL FOR TYPE)




SURFACE MOUNTED FLUORESCENT FIXTURE




PENDANT MOUNTED FLUORESCENT LIGHT FIXTURE




PENDANT MOUNTED FIXTURE




RECESSED DOWNLIGHT




EXIT SIGN / LIGHT




SMOKE DETECTOR




CEILING MOUNTED CABINET UNIT HEATER




EXHAUST/RETURN GRILLE




SUPPLY DIFFUSER



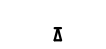
SPEAKER BY ELECTRICAL CONTRCATOR. SEE "TS" SHEETS



PENDANT SPRINKLER HEAD (SEE FIRE PROTECTION FOR TYPE)



SIDEWALL SPRINKLER HEAD



WINDOW SHADE TO BE PROVIDED AT THIS OPENING

NOTE: NOT ALL SYMBOLS SHOWN ARE USED ON DRAWINGS

REFLECTED CEILING PLAN GENERAL NOTES

1. REFER TO ELECTRICAL DRAWINGS FOR FIXTURE TYPES, AND ELECTRICAL AND MECHANICAL DRAWINGS FOR ADDITIONAL INFORMATION PERTAINING TO ELECTRICAL AND MECHANICAL WORK.

2. COORDINATE SIZE AND LOCATION OF ALL ACCESS PANELS WITH TRADE. REQUIRING THE SAME. ACCESS PANELS ARE SPECIFIED ARCHITECTURALLY BUT ARE REQUIRED TO BE PROVIDED BY TRADE. INDICATE ALL LOCATIONS WITHIN FIXED GYPSUM BOARD CEILINGS BEFORE INSTALLATION OF GYPSUM BOARD AND RECEIVE WRITTEN APPROVAL FROM ARCHITECT BEFORE PROCEEDING WITH COMPLETE INSTALLATION.

3. COORDINATE CEILING SUSPENSION SYSTEMS WITH OTHER CEILING SPACE EQUIPMENT SUPPORTS.

4. ALL SMOKE BARRIER PARTITIONS, HORIZONTAL EXIT ENCLOSURES AND FIRE RATED PARTITIONS WHICH EXTEND TO THE DECK ABOVE SHALL BE MARKED EVERY 20'-0" HORIZONTALLY WITHIN THE CEILING SPACE. "FIRE AND SMOKE BARRIER - PROTECT ALL OPENINGS"

5. ALL GYP BOARD FASCIAS @ SOFFITS, ADJACENT TO ACOUSTICAL PANEL CEILINGS, SHALL EXTEND 6" MINMUM ABOVE ACOUSTICAL PANEL CEILINGS.

6. PROVIDE WOOD BLOCKING, ABOVE GYPSUM BOARD CEILINGS, AS REQUIRED FOR MISCELLANEOUS SUSPENDED ITEMS (i.e. CURTAIN TRACKS, WINDOW SHADES, ACOUSTICAL BAFFLES, ETC.) TREATED WHERE REQUIRED.

7. CENTER ALL SPRINKLER HEADS IN THE CENTER OF CEILING PANEL UNLESS SHOWN OTHERWISE.

A4

A-5

FIRST FLOOR REFLECTED CEILING PLAN
SCALE: 1/8" = 1'-0"

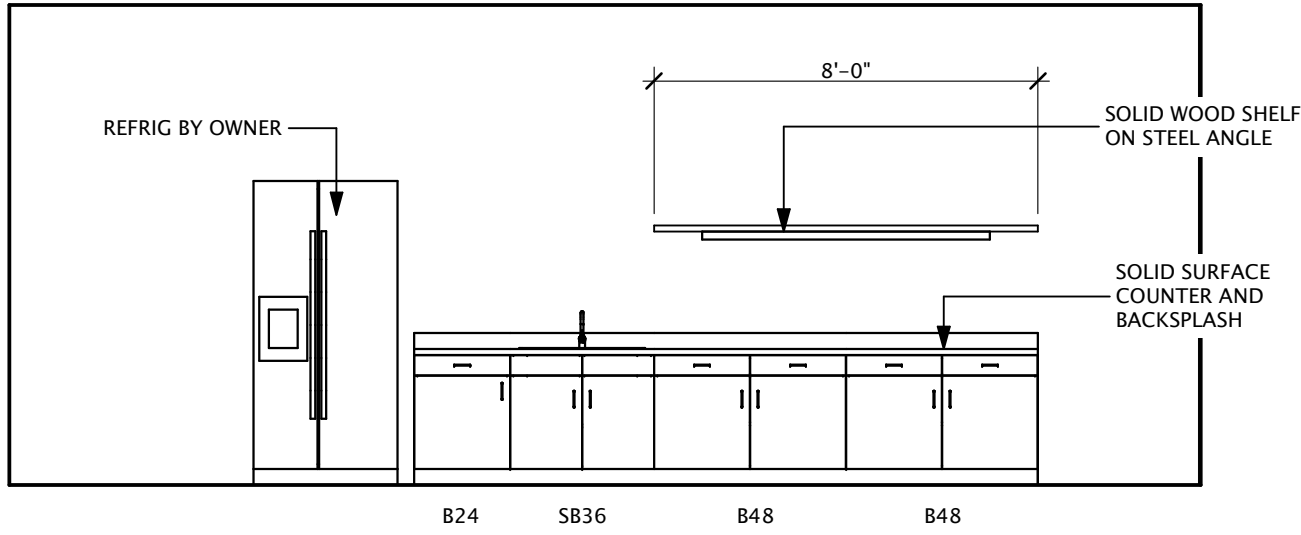
Printed 11/14/2014

A7

A-6

ELEVATION AT CAFE

SCALE: 1/4" = 1'-0"



A4

A-6

SECOND FLOOR REFLECTED CEILING PLAN

SCALE: 1/8" = 1'-0"

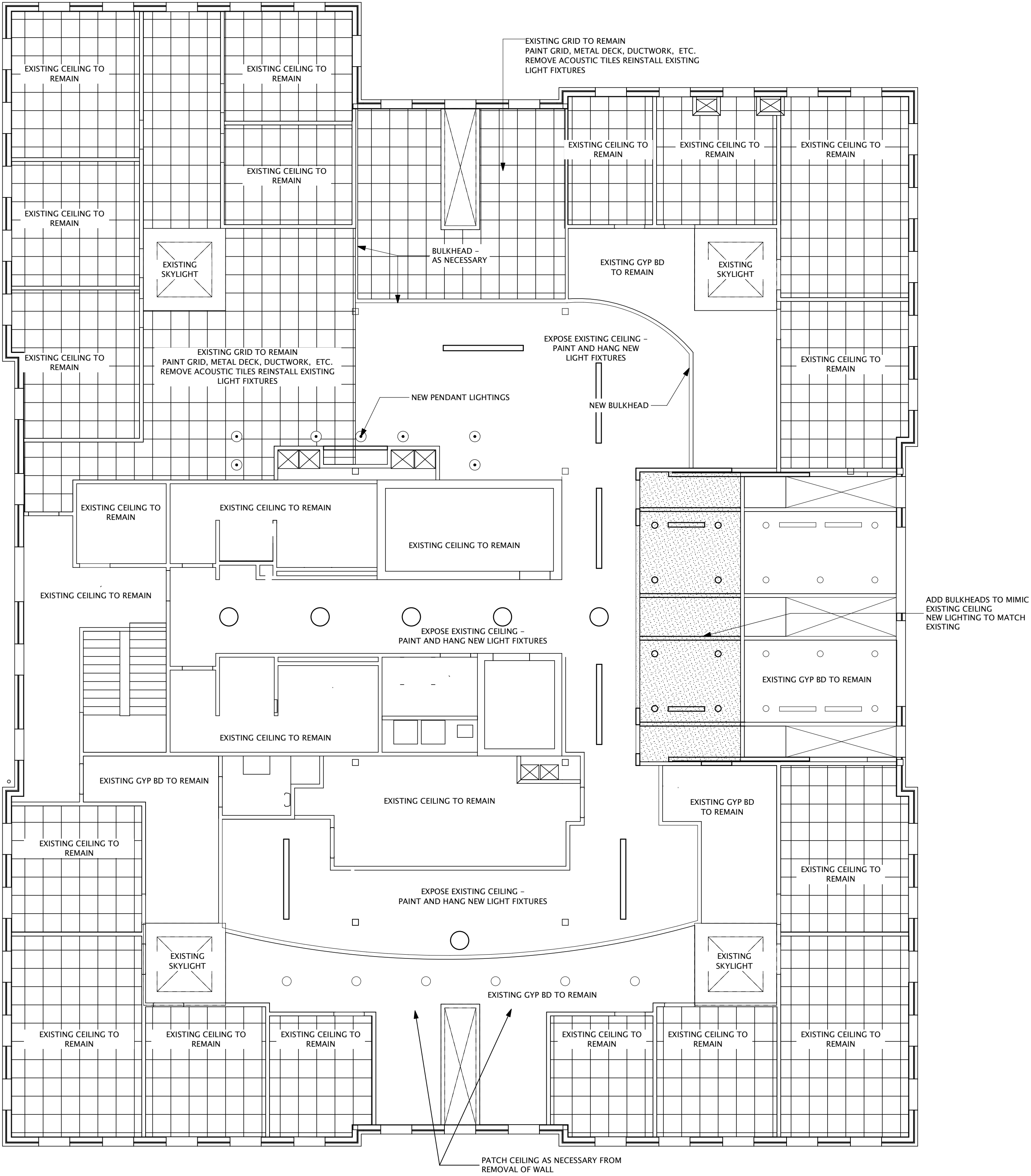
FIXTURE LEGEND

	RECESSED FLUORESCENT TROFFER (2'x4' / 1'x4' / 2'x2')
	FLUORESCENT COVE LIGHTING
	FLUORESCENT INDUSTRIAL FIXTURE (SEE ELECTRICAL FOR TYPE)
	SURFACE MOUNTED FLUORESCENT FIXTURE
	PENDANT MOUNTED FLUORESCENT LIGHT FIXTURE
	PENDANT MOUNTED FIXTURE
	RECESSED DOWNLIGHT
	EXIT SIGN / LIGHT
	SMOKE DETECTOR
	CEILING MOUNTED CABINET UNIT HEATER
	EXHAUST/RETURN GRILLE
	SUPPLY DIFFUSER
	SPEAKER BY ELECTRICAL CONTRCATOR. SEE "TS" SHEETS
	PENDANT SPRINKLER HEAD (SEE FIRE PROTECTION FOR TYPE)
	SIDEWALL SPRINKLER HEAD
	WINDOW SHADE TO BE PROVIDED AT THIS OPENING

NOTE: NOT ALL SYMBOLS SHOWN ARE USED ON DRAWINGS

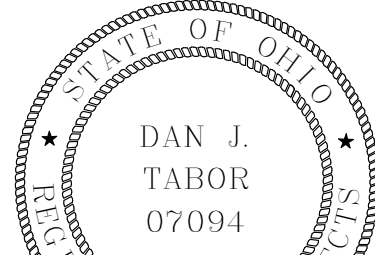
REFLECTED CEILING PLAN GENERAL NOTES

1. REFER TO ELECTRICAL DRAWINGS FOR FIXTURE TYPES, AND ELECTRICAL AND MECHANICAL DRAWINGS FOR ADDITIONAL INFORMATION PERTAINING TO ELECTRICAL AND MECHANICAL WORK.
2. COORDINATE SIZE AND LOCATION OF ALL ACCESS PANELS WITH TRADE. REQUIRING THE SAME. ACCESS PANELS ARE SPECIFIED ARCHITECTURALLY BUT ARE REQUIRED TO BE PROVIDED BY TRADE. INDICATE ALL LOCATIONS WITHIN FIXED GYPSUM BOARD CEILINGS BEFORE INSTALLATION OF GYPSUM BOARD AND RECEIVE WRITTEN APPROVAL FROM ARCHITECT BEFORE PROCEEDING WITH COMPLETE INSTALLATION.
3. COORDINATE CEILING SUSPENSION SYSTEMS WITH OTHER CEILING SPACE EQUIPMENT SUPPORTS.
4. ALL SMOKE BARRIER PARTITIONS, HORIZONTAL EXIT ENCLOSURES AND FIRE RATED PARTITIONS WHICH EXTEND TO THE DECK ABOVE SHALL BE MARKED EVERY 20'-0" HORIZONTALLY WITHIN THE CEILING SPACE. "FIRE AND SMOKE BARRIER - PROTECT ALL OPENINGS"
5. ALL GYP BOARD FASCIAS @ SOFFITS, ADJACENT TO ACOUSTICAL PANEL CEILINGS, SHALL EXTEND 6" MINIMUM ABOVE ACOUSTICAL PANEL CEILINGS.
6. PROVIDE WOOD BLOCKING, ABOVE GYPSUM BOARD CEILINGS, AS REQUIRED FOR MISCELLANEOUS SUSPENDED ITEMS (i.e. CURTAIN TRACKS, WINDOW SHADES, ACOUSTICAL BAFFLES, ETC.) TREATED WHERE REQUIRED.
7. CENTER ALL SPRINKLER HEADS IN THE CENTER OF CEILING PANEL UNLESS SHOWN OTHERWISE.



THE COLLABORATIVE

architecture | landscape architecture
interior design | planning | graphic design
500 Madison Avenue, Toledo, Ohio 43604
419.242.7405 thecollaborativeinc.com



Dan J. Tabor, License #07094
Expiration Date 12/31/2015

KEY PLAN

N.T.S.

PROJECT TITLE

Interiors Project for:
ROOT LEARNING INC.
5470 SOUTH MAIN STREET
SYLVANIA, OHIO 43560

CHECKED

APPROVED

TCI JOB NO. 106223

SHEET TITLE

SECOND FLOOR
RCP

SHEET NO.

A-6