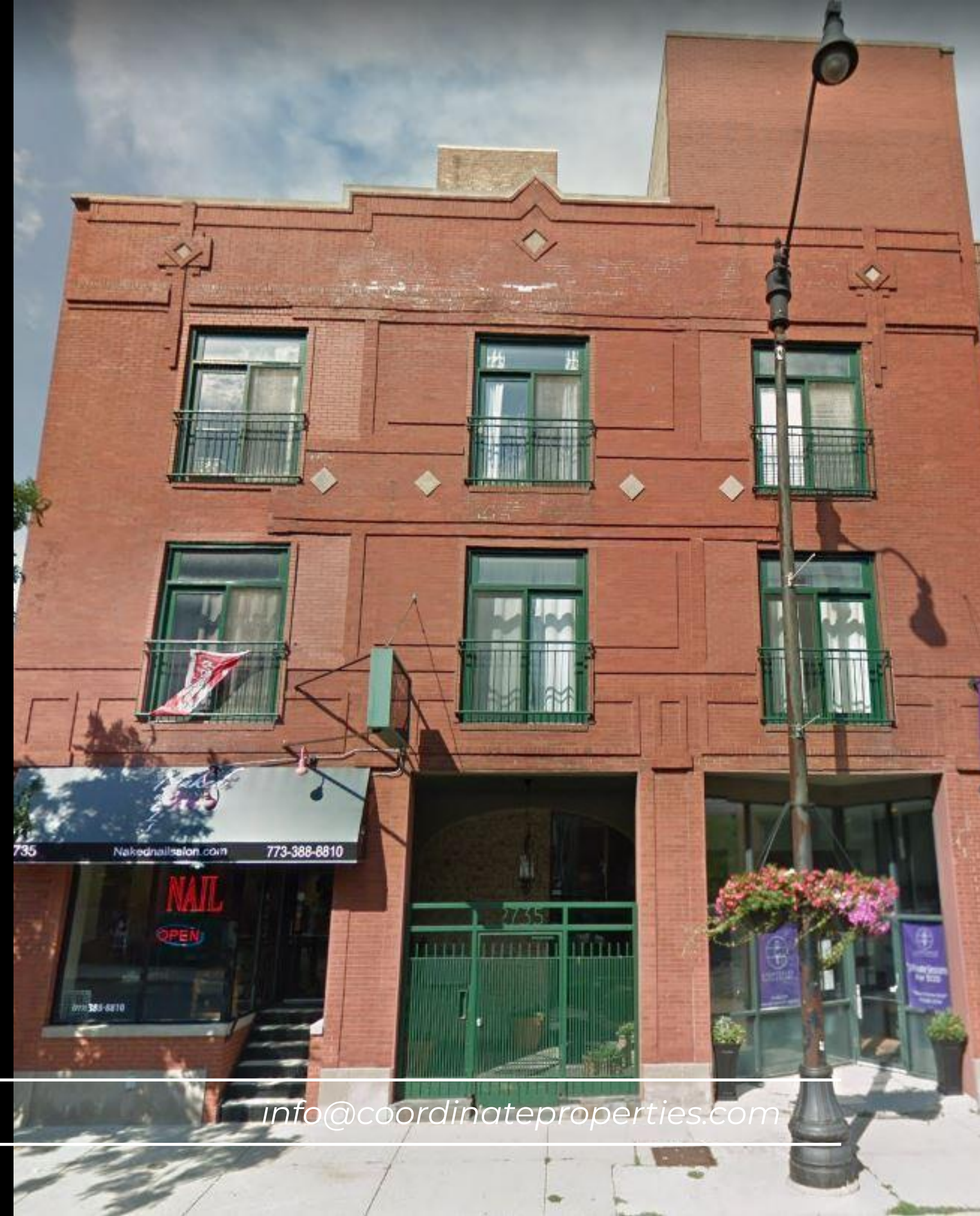


Retail/Professional Services Space For Lease

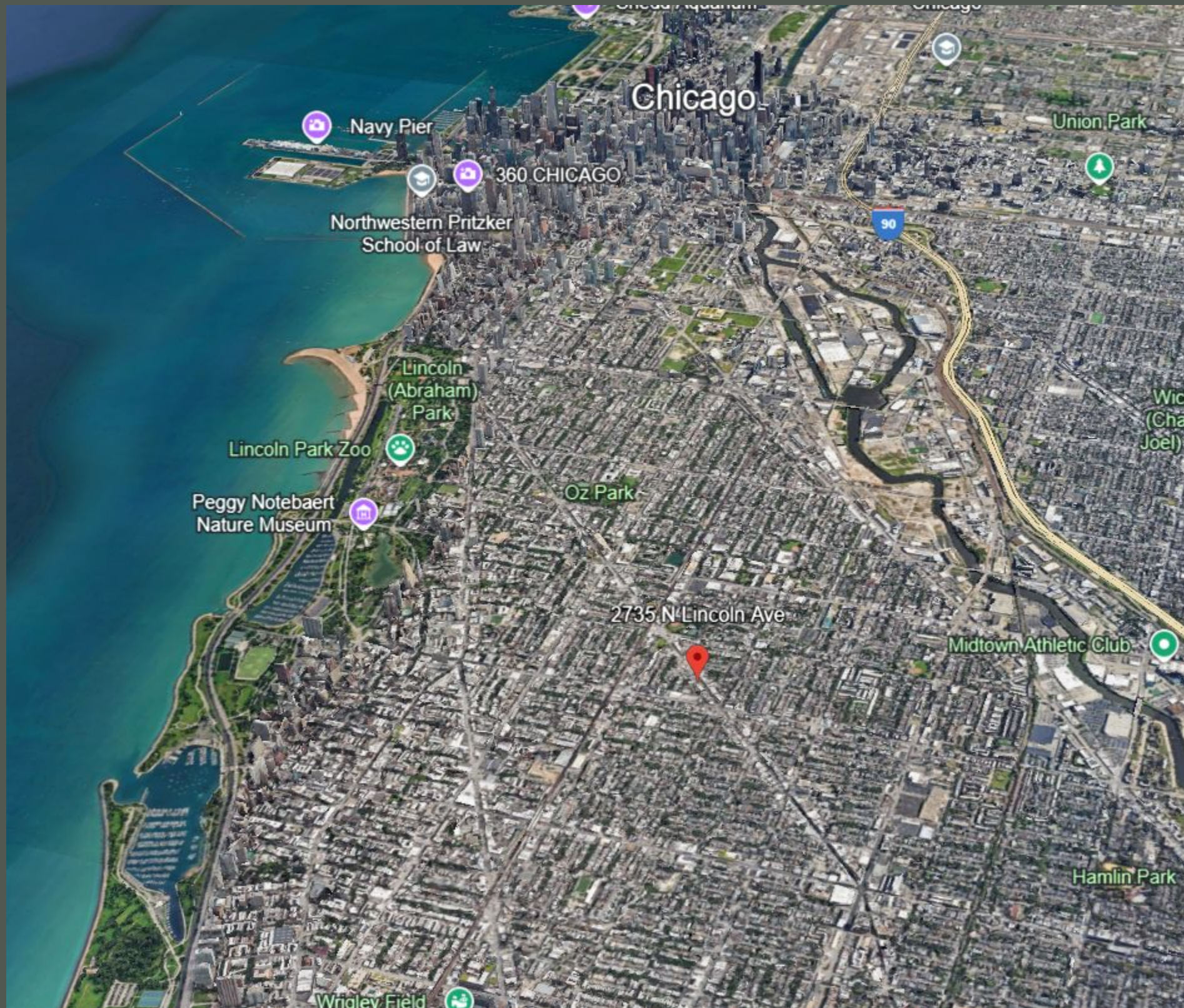
847.409.4900

coordinate
properties

2735 N Lincoln Ave. Chicago, IL



info@coordinateproperties.com

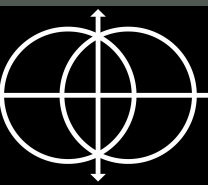


- B3-2 Zoning
- 1,220 Sq Ft
- Exposed brick interior
- Charming Lincoln Park/Lakeview East neighborhood
- Close proximity to the Diversey CTA station (Brown and Purple Lines)

847.409.4900

2735 N Lincoln Ave, Chicago, IL

info@coordinateproperties.com



Notable Neighbors



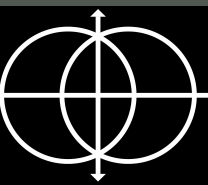
Lincoln Park:

- Batter & Berries
- Big Shoulders Coffee
- Power Yoga Studio
- Shell
- Rotofugi
- Wink Optical
- Pat's Pizza
- Vigo Coffee
- Gotham Bagels

847.409.4900

2735 N Lincoln Ave, Chicago, IL

info@coordinateproperties.com



01.

Reception Area



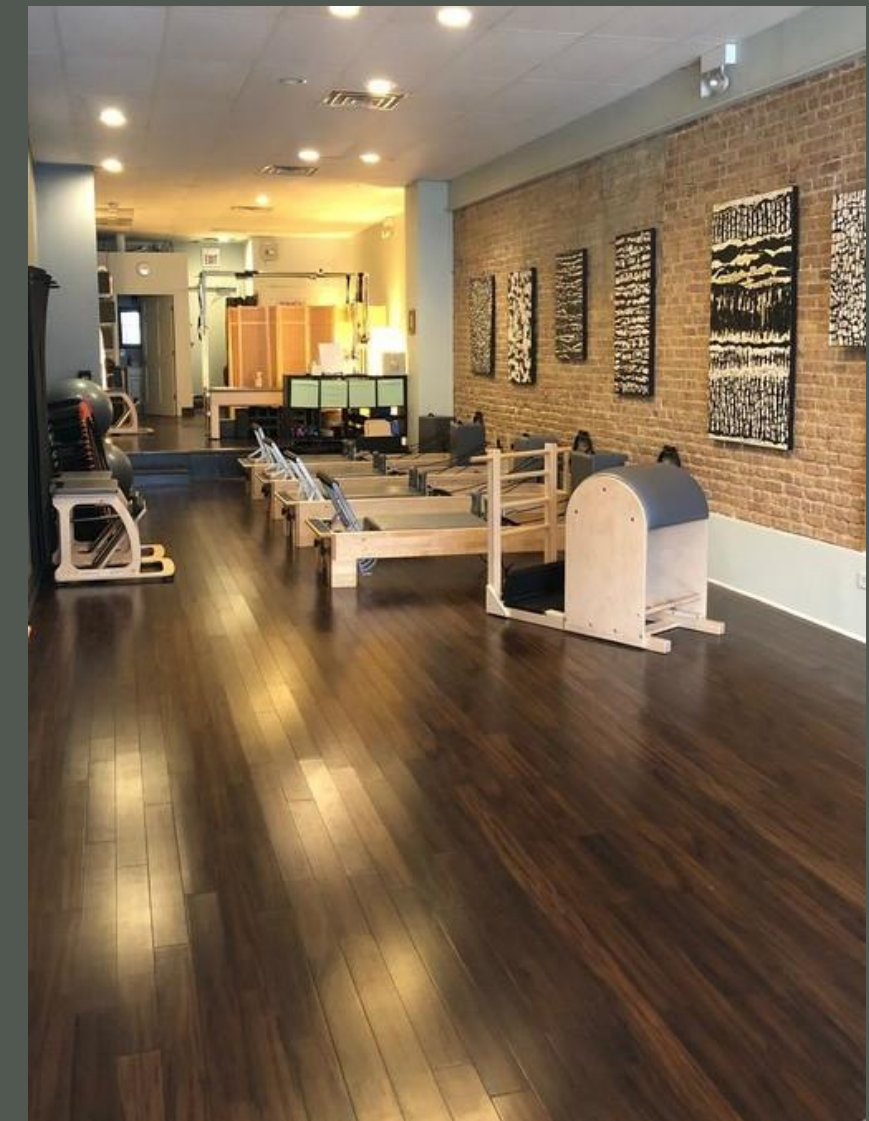
847.409.4900

2735 N Lincoln Ave, Chicago, IL

info@coordinateproperties.com

02.

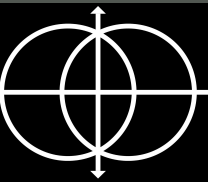
Open Space With Soaring 14 Ft Ceilings



847.409.4900

2735 N Lincoln Ave, Chicago, IL

info@coordinateproperties.com



03.

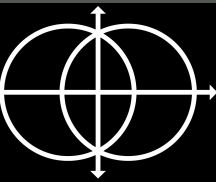
Laundry and Single Occupancy Restroom



847.409.4900

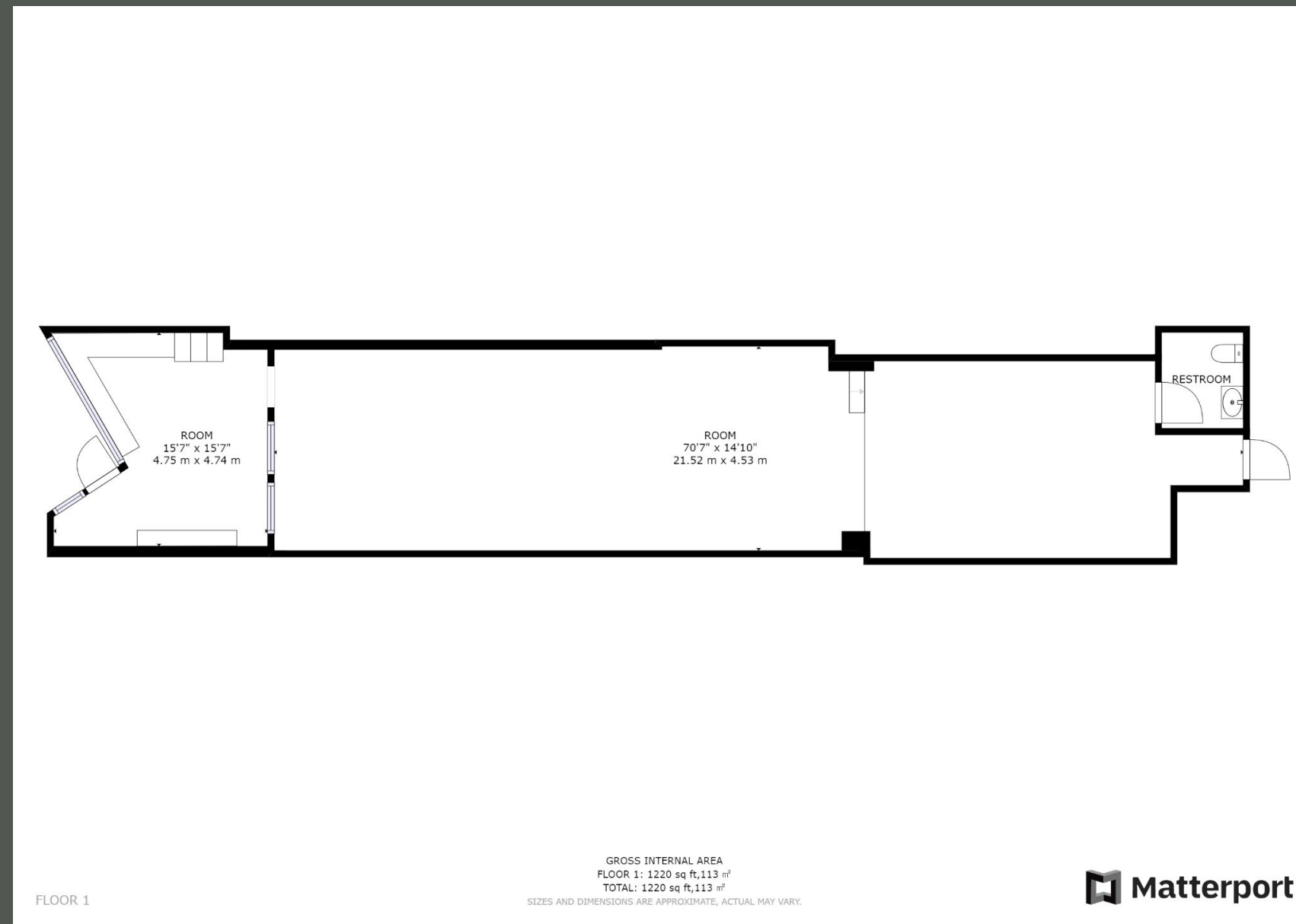
2735 N Lincoln Ave, Chicago, IL

info@coordinateproperties.com



04.

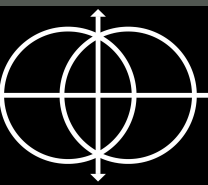
Floor Plan



847.409.4900

2735 N Lincoln Ave, Chicago, IL

info@coordinateproperties.com



Coordinate Properties

“GET ON THE GRID”



Who we are?

We are a woman-owned, commercial real estate brokerage based in Chicago holding a deep understanding of trends within the local market, embracing growth at every step.



What we do?

Uphold a dedication to client service and market expertise for all real estate needs.



Amanda Stamelos
Managing Broker
amanda@coordinateproperties.com

847.409.4900

2735 N Lincoln Ave, Chicago, IL

info@coordinateproperties.com
