



# 7560 CARPENTER FIRE STATION ROAD

CARY, NC 27519

UP TO **8,872 SF**  
**FOR  
LEASE**



## LISTING BROKERS:

SHELLEY BHATIA, CCIM  
910.273.8474 (M)  
SBHATIA@TRADEMARKPROPERTIES.COM

JACK PRUDEN  
919.645.1426 (O) | 919.619.7293 (M)  
JPRUDEN@TRADEMARKPROPERTIES.COM

**7560 CARPENTER FIRE STATION RD  
CARY, NC 27519**

## PROPERTY HIGHLIGHTS

- » **Three-story Class A medical office building**
- » **The West Cary property is perfectly positioned in the center of the Triangle with convenient access to RTP as well as RDU International Airport**
- » **The surrounding Cary suburbs provide an excellent demographic of high-income households with a highly-educated workforce**
- » **36,000+ SF space features an excellent variety of medical tenants**
- » **4:1,000 SF parking**
- » **Great visibility with building and monument signage available**
- » **Timeshare Rate: Negotiable for Suite 303; 1,500 SF**
- » **Vacant spaces available in cold dark shell with a TI allowance**

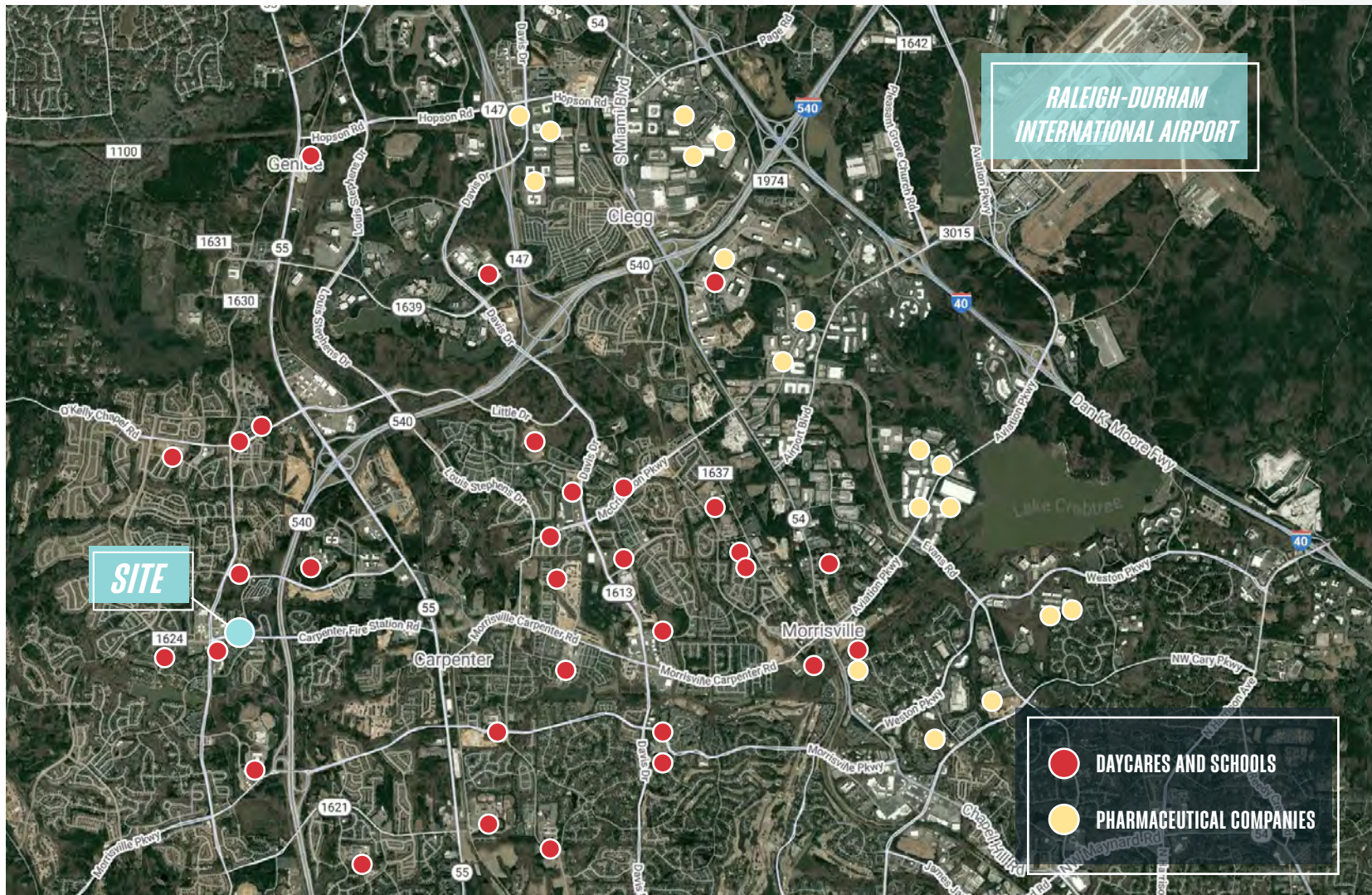


**SHELLEY BHATIA, CCIM**  
910.273.8474 (M)  
SBHATIA@TRADEMARKPROPERTIES.COM

**JACK PRUDEN**  
919.645.1426 (O) | 919.619.7293 (M)  
JPRUDEN@TRADEMARKPROPERTIES.COM

7560 CARPENTER FIRE STATION RD  
CARY, NC 27519

## LOCATION MAP



SHELLEY BHATIA, CCIM  
910.273.8474 (M)  
SBHATIA@TRADEMARKPROPERTIES.COM

JACK PRUDEN  
919.645.1426 (O) | 919.619.7293 (M)  
JPRUDEN@TRADEMARKPROPERTIES.COM

**7560 CARPENTER FIRE STATION RD  
CARY, NC 27519**

## **FIRST FLOOR**

**LEASE RATE: MID \$30s + \$6.00, NNN**

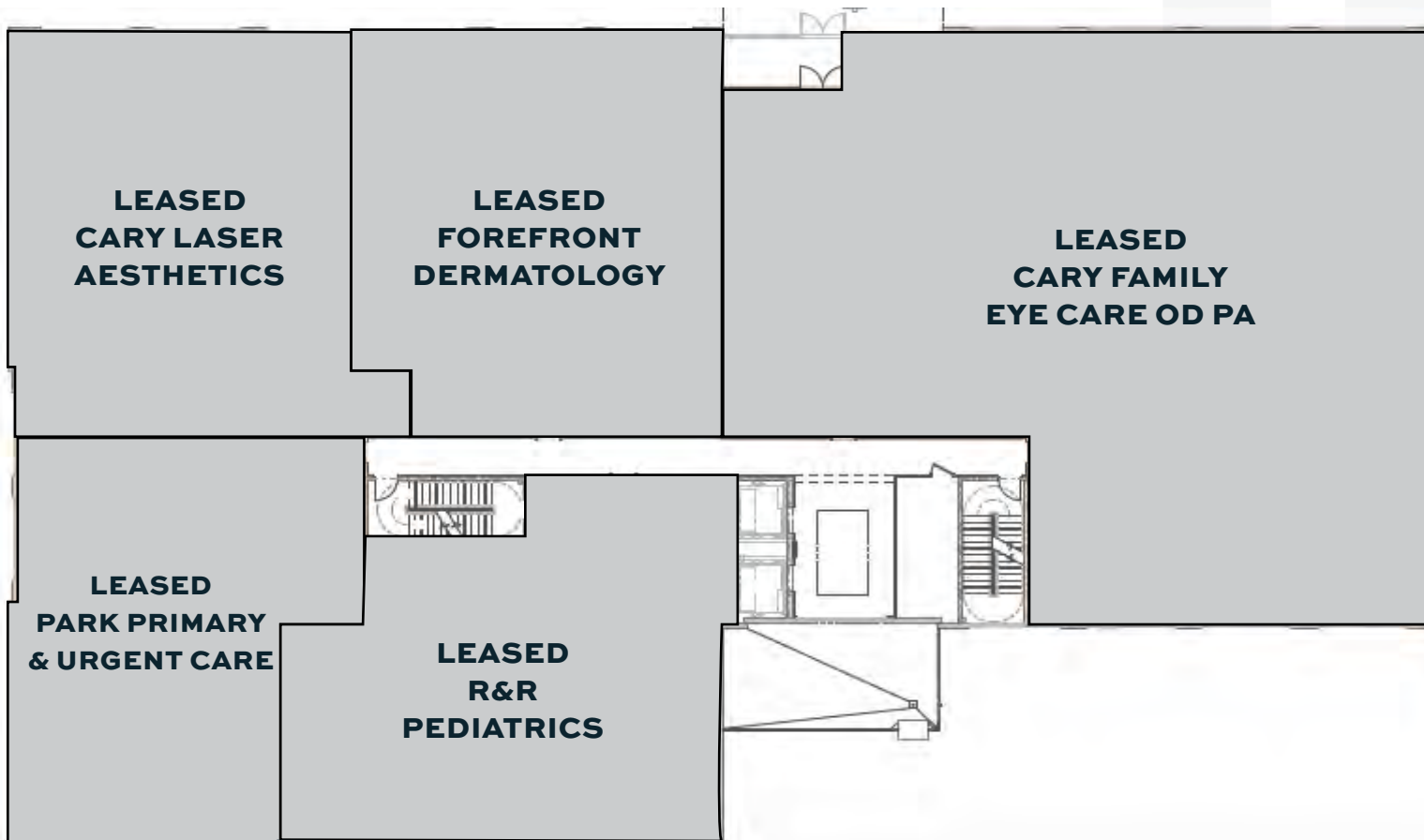


**SHELLEY BHATIA, CCIM**  
910.273.8474 (M)  
SBHATIA@TRADEMARKPROPERTIES.COM

**JACK PRUDEN**  
919.645.1426 (O) | 919.619.7293 (M)  
JPRUDEN@TRADEMARKPROPERTIES.COM

**7560 CARPENTER FIRE STATION RD**  
**CARY, NC 27519**

## SECOND FLOOR



**SHELLEY BHATIA, CCIM**  
910.273.8474 (M)  
SBHATIA@TRADEMARKPROPERTIES.COM

**JACK PRUDEN**  
919.645.1426 (O) | 919.619.7293 (M)  
JPRUDEN@TRADEMARKPROPERTIES.COM

7560 CARPENTER FIRE STATION RD  
CARY, NC 27519

## THIRD FLOOR



**\*\*SUITE OCCUPIED  
TWO DAYS/WEEK BY  
PARK GASTROENTEROLOGY**

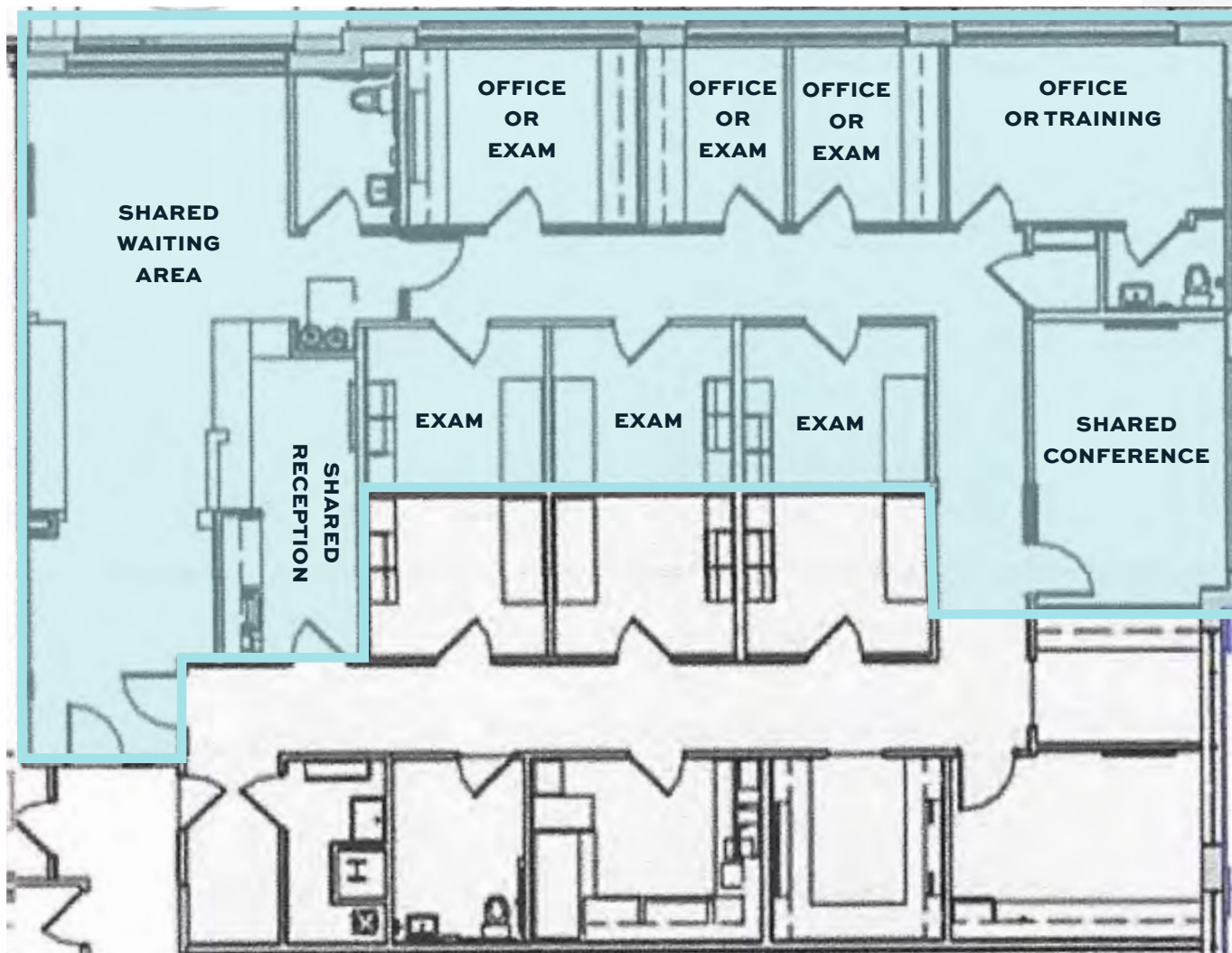
SUITE	SIZE	RENT/MONTH	AVAILABLE
301	2,624 SF	\$30.00	Immediately
302	2,333 SF	\$30.00	Immediately
303	1,500 SF	Negotiable	Immediately
304	1,915 SF	\$30.00	Immediately

SHELLEY BHATIA, CCIM  
910.273.8474 (M)  
SBHATIA@TRADEMARKPROPERTIES.COM

JACK PRUDEN  
919.645.1426 (O) | 919.619.7293 (M)  
JPRUDEN@TRADEMARKPROPERTIES.COM

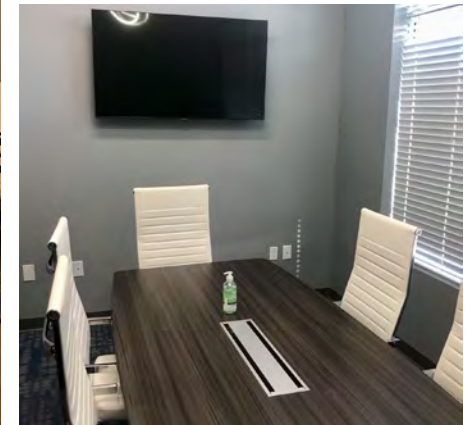
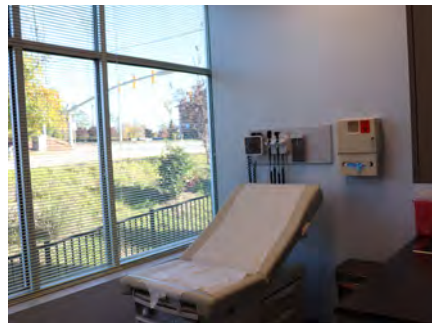
**7560 CARPENTER FIRE STATION RD  
CARY, NC 27519**

## **SUITE 303 - TIMESHARE SPACE**



7560 CARPENTER FIRE STATION RD  
CARY, NC 27519

## EXAMPLE OF UPFIT SUITE



SHELLEY BHATIA, CCIM  
910.273.8474 (M)  
SBHATIA@TRADEMARKPROPERTIES.COM

JACK PRUDEN  
919.645.1426 (O) | 919.619.7293 (M)  
JPRUDEN@TRADEMARKPROPERTIES.COM

**7560 CARPENTER FIRE STATION RD  
CARY, NC 27519**

## GALLERY



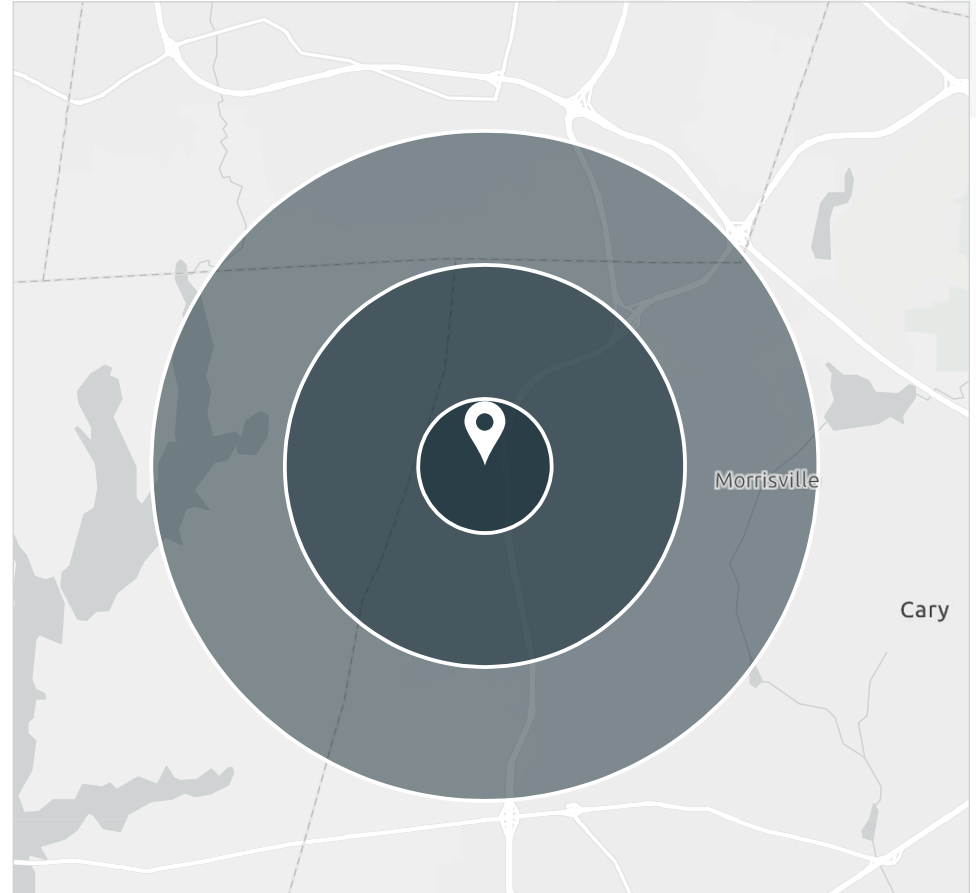
**SHELLEY BHATIA, CCIM**  
910.273.8474 (M)  
SBHATIA@TRADEMARKPROPERTIES.COM

**JACK PRUDEN**  
919.645.1426 (O) | 919.619.7293 (M)  
JPRUDEN@TRADEMARKPROPERTIES.COM

**7560 CARPENTER FIRE STATION RD**  
**CARY, NC 27519**

## DEMOGRAPHICS

	1-Mile	3-Mile	5-Mile
2025 POPULATION	15,485	66,607	149,625
2030 POPULATION (PROJECTED)	16,476	70,477	160,023
2025 HOUSEHOLDS	5,380	23,387	55,197
2030 HOUSEHOLDS (PROJECTED)	5,761	24,954	59,892
OWNER-OCCUPIED HOUSING UNITS	3,482	15,319	34,357
RENTER-OCCUPIED HOUSING UNITS	1,898	8,068	20,840
2025 AVERAGE HOUSEHOLD INCOME	\$217,287	\$201,797	\$188,023
2030 AVG HOUSEHOLD INCOME (PROJECTED)	\$234,956	\$221,085	\$204,421



## LISTING BROKERS:

**SHELLEY BHATIA, CCIM**

910.273.8474 (M)

SBHATIA@TRADEMARKPROPERTIES.COM

**JACK PRUDEN**

919.645.1426 (O) | 919.619.7293 (M)

JRPUDEN@TRADEMARKPROPERTIES.COM



**THIS IS OUR TRADEMARK**

1001 WADE AVENUE SUITE 300, RALEIGH, NC 27605  
TRADEMARKPROPERTIES.COM | 919-782-5552

THE INFORMATION CONTAINED HEREIN WAS OBTAINED FROM SOURCES BELIEVED RELIABLE; HOWEVER, TRADEMARK PROPERTIES MAKES NO GUARANTEES, WARRANTIES, OR REPRESENTATIONS AS TO THE COMPLETENESS OR ACCURACY THEREOF. THE PRESENTATION OF THIS PROPERTY IS SUBMITTED SUBJECT TO ERRORS, OMISSIONS, CHANGES OF PRICE OR CONDITIONS PRIOR TO SALE OR LEASE, OR WITHDRAWAL WITHOUT NOTICE.