



3033

# For Sale In Midtown Phoenix

Suite 300  
3033 N Central Avenue



## Opportunity

Nestled within the dynamic midtown submarket of Phoenix, lies 3033 N Central Ave, a remarkable office condominium steeped in history. Originally built in the 1960s, this 134,164-square-foot building comprises individually owned condo units. Its prime location offers unparalleled accessibility and exposure, making it an ideal choice for businesses seeking strategic positioning.

The Offering is a 12,486-square-foot condo situated on its own floor. This unique layout presents an exceptional opportunity for a single-floor user or group. Envision the potential for a unified workspace, customized layout, and streamlined operations—all within the confines of an exclusive floor space.

## Highlights

- Ready for immediate occupancy
- Convenient access to walkable amenities just across the street at Park Central
- Benefit from a prime Central Avenue address nestled between Osborn Rd and Thomas Rd
- Adjacent to a light rail stop for enhanced accessibility
- Shared parking garage conveniently located just off Central Ave
- Generous parking ratio of 5 spaces per 1,000 square feet
- Ease of access for both tenants and visitors

**\$2,434,770**

Sale Price

**\$195**

Price SF

**±12,486 SF**

RBA

**2008**

Year Renovated



Available For Immediate Occupancy



Partially Furnished



Covered Tenant & Visitor Parking



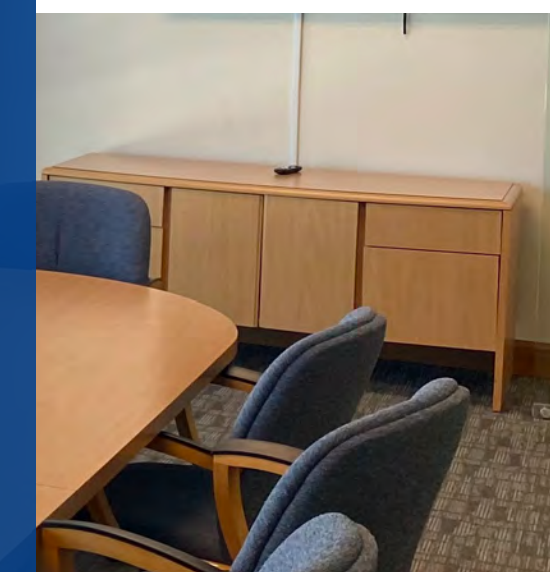
Central Avenue Address



Full Floor Opportunity

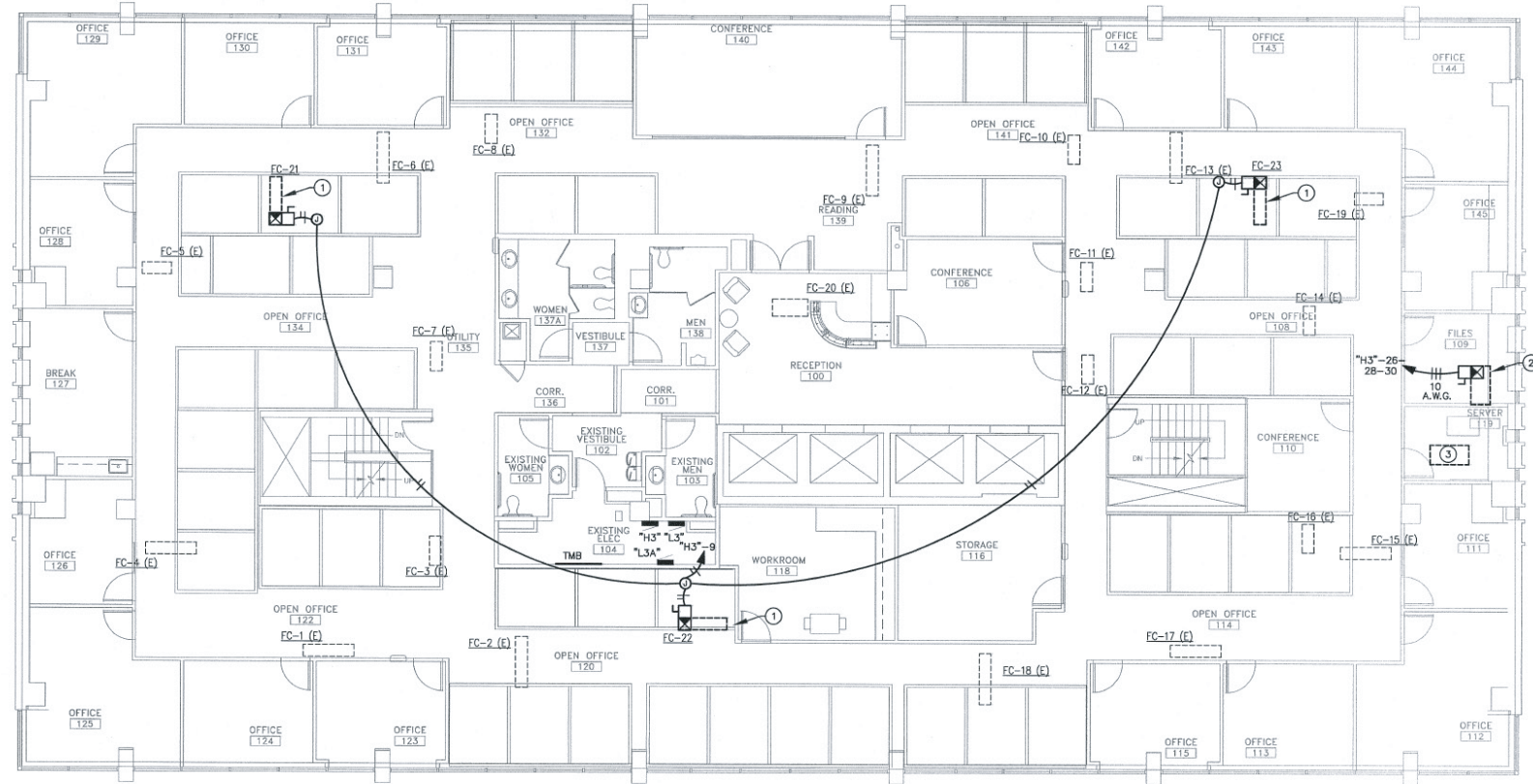


Abundant Nearby Amenities



# Floorplan

Third Floor



# Location Overview

Just minutes from Downtown Phoenix, 3033 N Central is strategically positioned near the bustling center of one of the nation's fastest-growing cities. Midtown Phoenix has emerged as a formidable market contender, boasting a vibrant urban landscape with easy access to an array of amenities, connectivity options, and a dynamic work-live-play atmosphere. 3033 N Central offers the advantages of downtown living minus the congestion, presenting an ideal opportunity to reside at the epicenter of it all.



- Lightrail Adjacent**  
Central Ave & Thomas Rd Station
- 300+**  
Nearby Restaurants  
Bars & Coffee shops
- Centrally Located**  
Within Midtown  
Phoenix



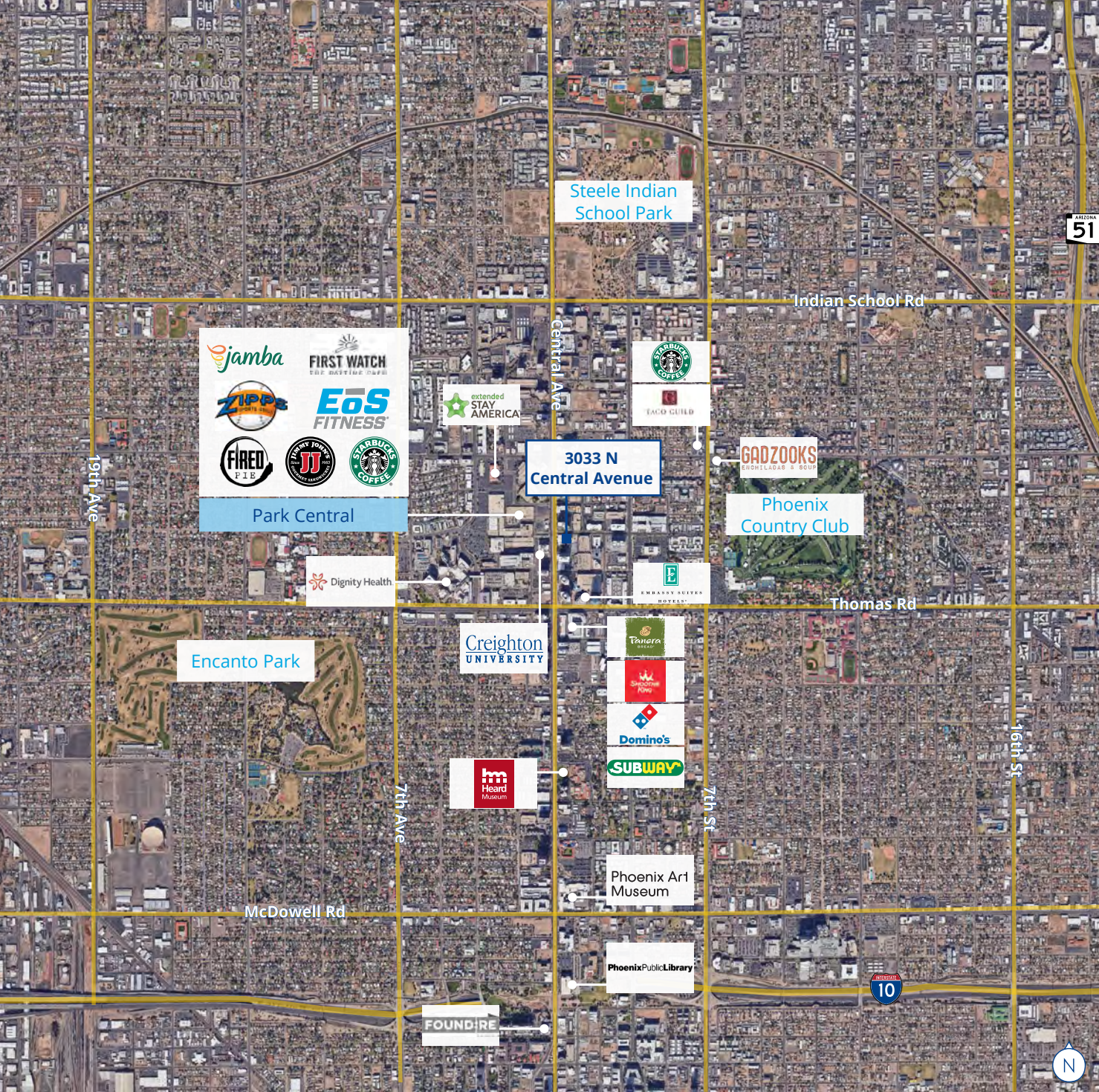
**3033 N Central Avenue**

22,486 VPD





2390 E Camelback Rd  
 Suite 100  
 Phoenix, AZ 85016  
 P: +1 602 222 5000  
 colliers.com



Get in Touch

**Phil Breidenbach** SIOR  
 Senior Executive Vice President  
 +1 602 222 5073  
 phil.breidenbach@colliers.com