

±1,313 SF Ground Floor Office Condo For Sale

Owner User Opportunity – Will be Delivered Vacant at Close of Escrow

Ground Floor Corner Unit | 3 Private Offices | Large Reception Area | Breakroom Area

DAVID TAXIN

Partner

+1 408 966 5919

dtaxin@moinc.net

Lic. 00983163

JEREMY AWDISHO

Vice President

+1 650 814 4510

jeremy@moinc.net

Lic. 02064232

2021 The Alameda Ste 160, San Jose



INVESTMENT OVERVIEW



Price: \$645,000

Condo Size: ±1,313 SF

Zoning: A (PD) Planned Development

Land Area: ±2,790 SF

±1,313 SF Ground Floor Office Condo For Sale in the Alameda Park Center

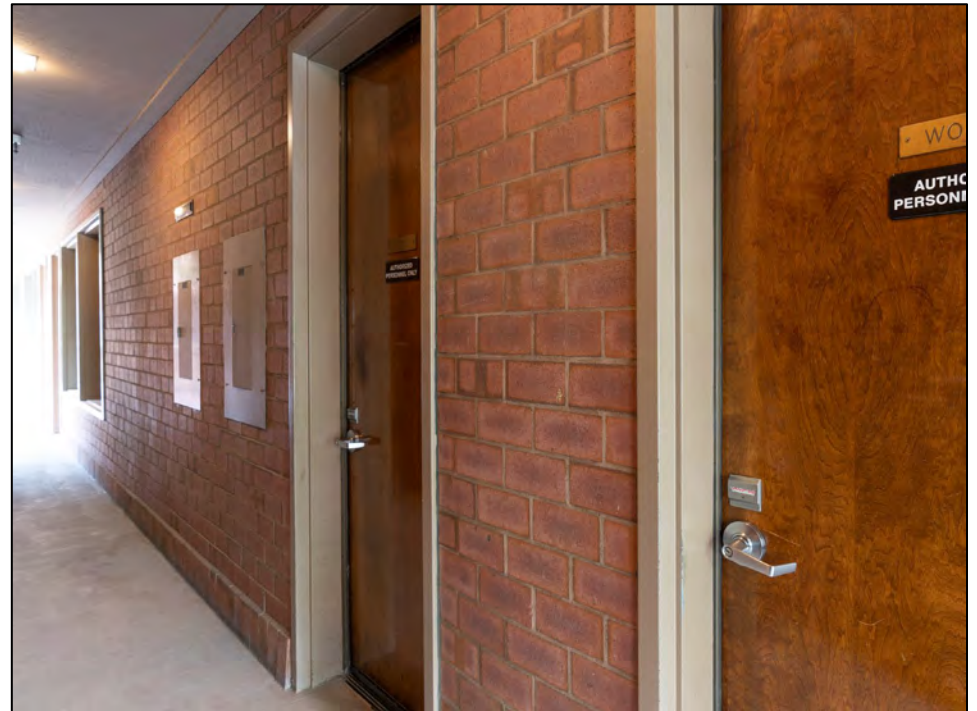
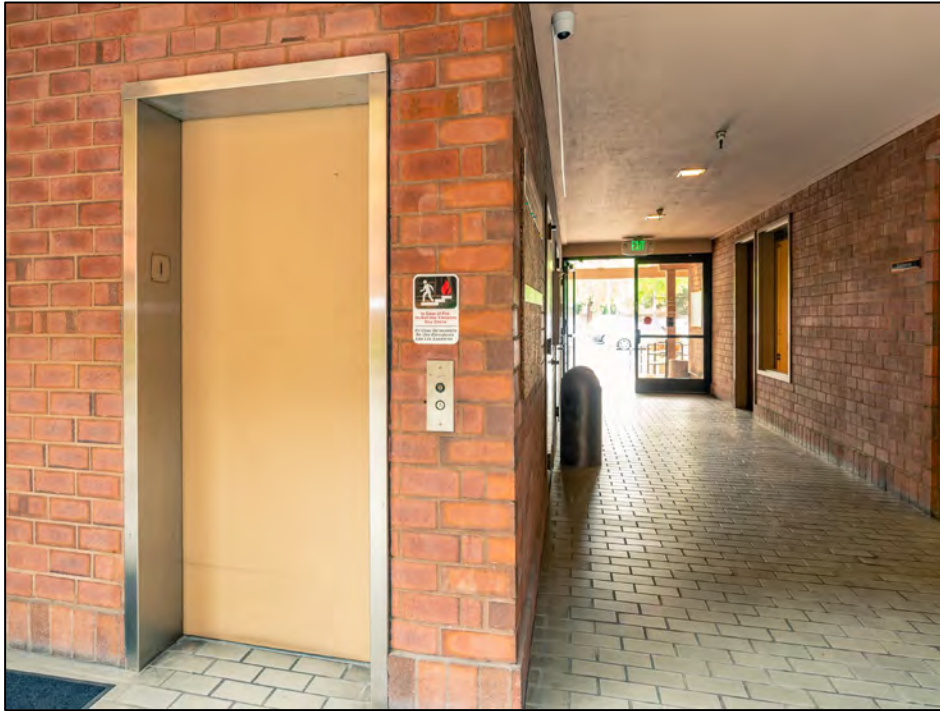
Owner User Opportunity

- ±1,313 SF Ground Floor Office Condo For Sale in the Alameda Park Center.
- **Owner User Opportunity:** The Unit is Currently Occupied by a Law Firm but will Be Delivered Vacant at Close of Escrow.
- Ground Floor Corner Unit with its Own Entrance from the Exterior of the Building.
- Open Floor Plan with 3 Private Offices.
- Large Reception Area.
- Breakroom Area with Sink/Coffee Station.
- The Property is Located on The Alameda, 1 Parcel Away from Highway 880, Great Visibility and Easy Highway Access.
- **Centrally Located:** Minutes Away from Santa Clara University, Downtown San Jose, and El Camino Real.

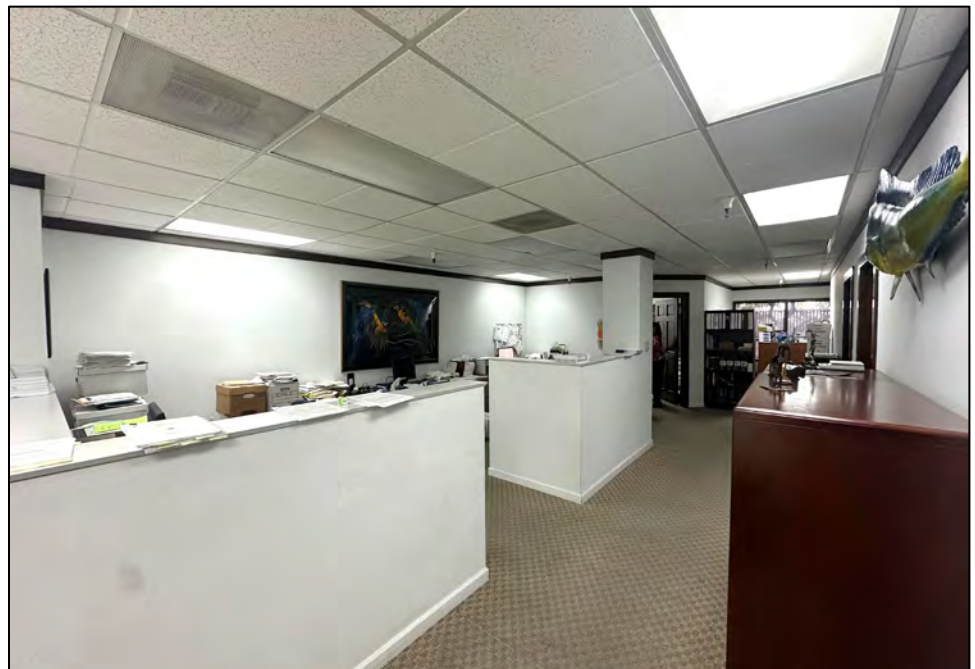
INTERIOR PHOTOS



INTERIOR PHOTOS



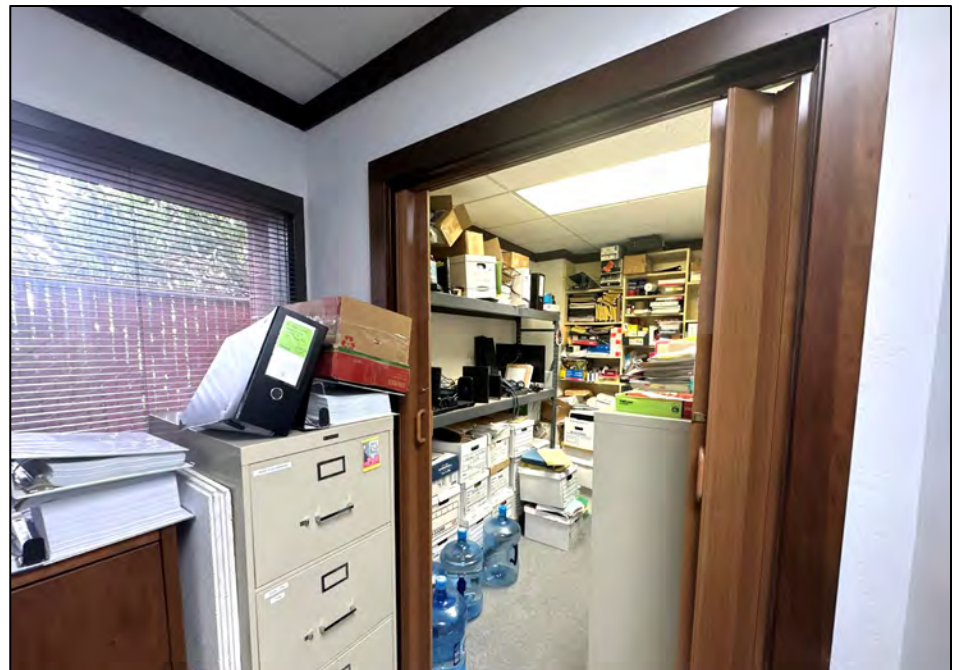
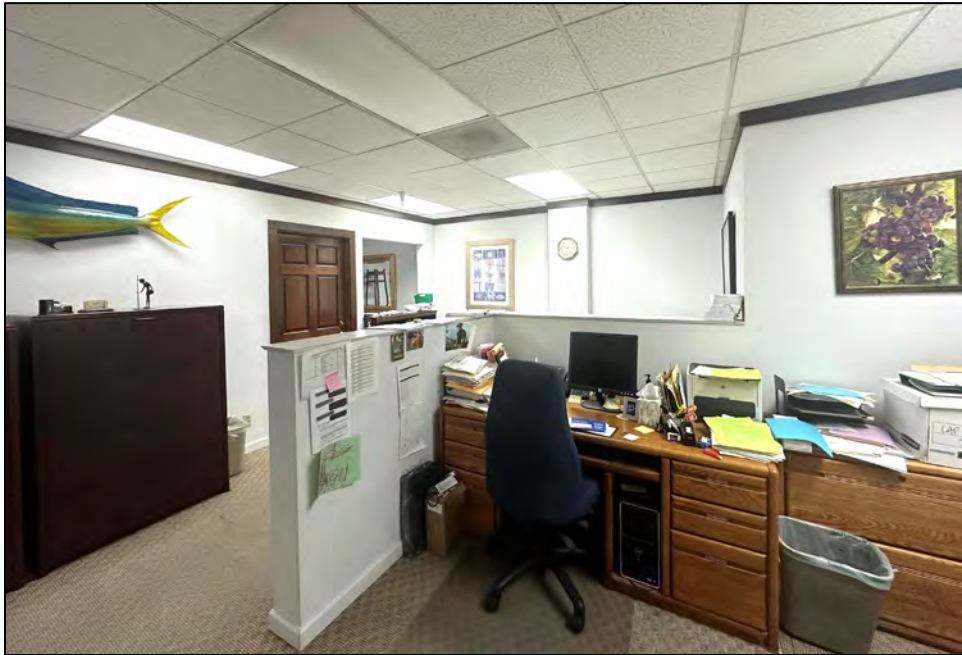
INTERIOR PHOTOS



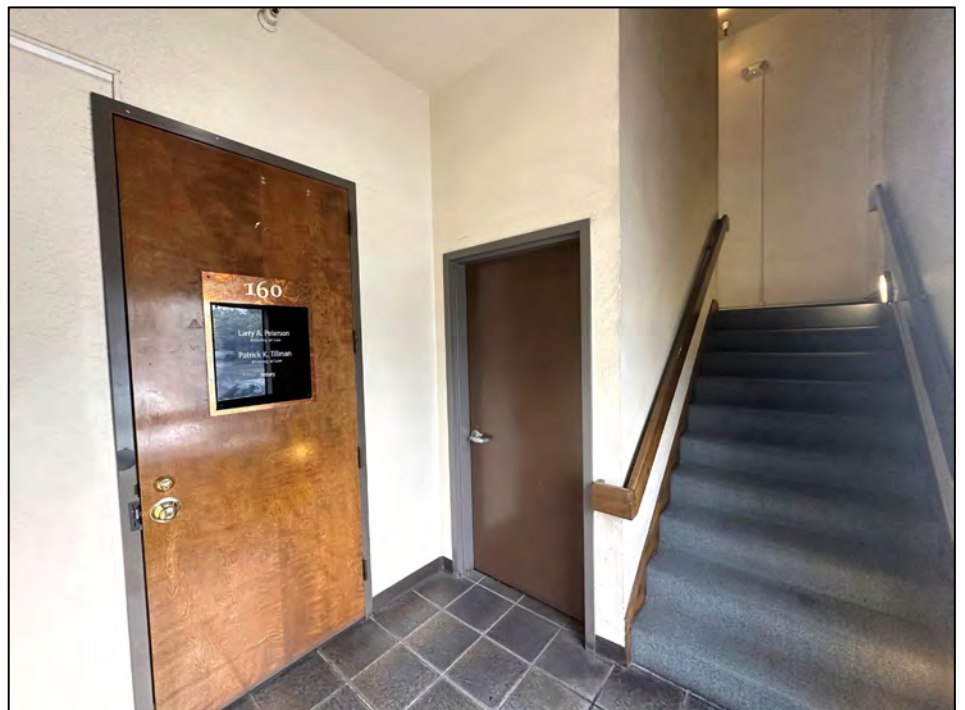
INTERIOR PHOTOS



INTERIOR PHOTOS



INTERIOR PHOTOS





The Alameda



DEMOGRAPHICS

2025 SUMMARY	1-MILE	5-MILE	10-MILE
Population	18,783	617,205	1,554,686
Households	6,487	222,248	526,618
Average Household Size	2.5	2.6	2.8
Owner Occupied Housing Units	2,670	85,370	259,777
Renter Occupied Housing Units	3,591	129,087	246,544
Median Age	34	37.2	38.9
Median Household Income	\$127,576	\$130,637	\$144,666
Average Household Income	\$155,577	\$159,304	\$170,730

2021 The Alameda Ste 160

San Jose



DAVID TAXIN

Partner
+1 408 966 5919
dtaxin@moinc.net
Lic. 00983163

JEREMY AWDISHO

Vice President
+1 650 814 4510
jeremy@moinc.net
Lic. 02064232