

For Lease

Plumb Ln. & Kietzke Ln.



690 E. Plumb Ln.
Reno, NV 89501

Point of contact


Emma Robb
Vice President
775.443.8655
erobb@logicCRE.com
S.0183112

Michael Keating, SIOR
Partner
775.386.9727
mkeating@logicCRE.com
S.0174942


Listing Snapshot



\$1.25 - \$1.35 PSF FS
Lease Rate



± 3,595 - 8,489 SF
Available Square Feet



General Commercial (GC)
Zoning

Property Highlights


- ± 8,489 SF available on first floor featuring 17 private offices
- ± 3,595 SF available on second floor featuring 9 private office
- Located off Plumb Ln. near the newly developed RED entertainment district and the Reno Public Market
- Excellent visibility with frontage on Plumb Ln.
- Ample on-site parking

Demographics

	1-mile	3-mile	5-mile
2025 Population	15,720	122,236	228,840
2025 Average Household Income	\$111,348	\$104,505	\$101,640
2025 Total Households	7,825	54,323	97,945



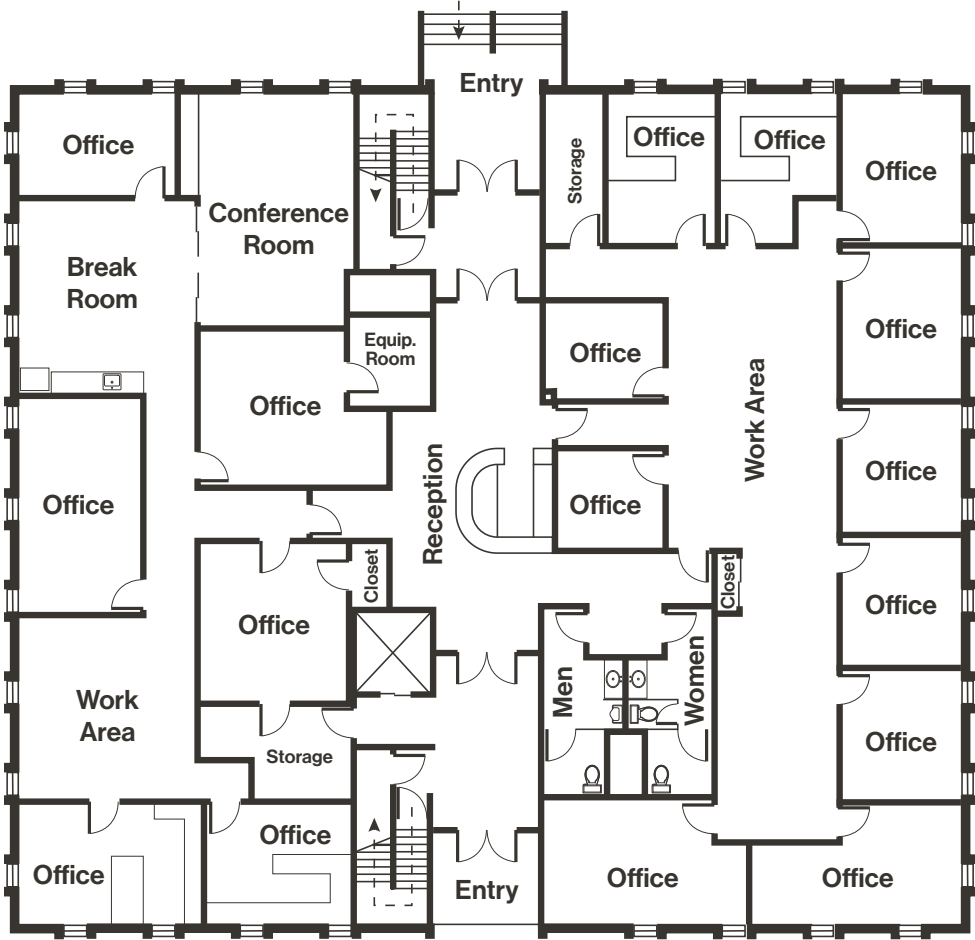
Floor Plan | First Floor

 **\$1.35 PSF FS**
Lease Rate

 **± 8,489 SF**
Square Footage


 **17**
Office Spaces

Available 1 month from lease negotiations



Floor Plan | Second Floor

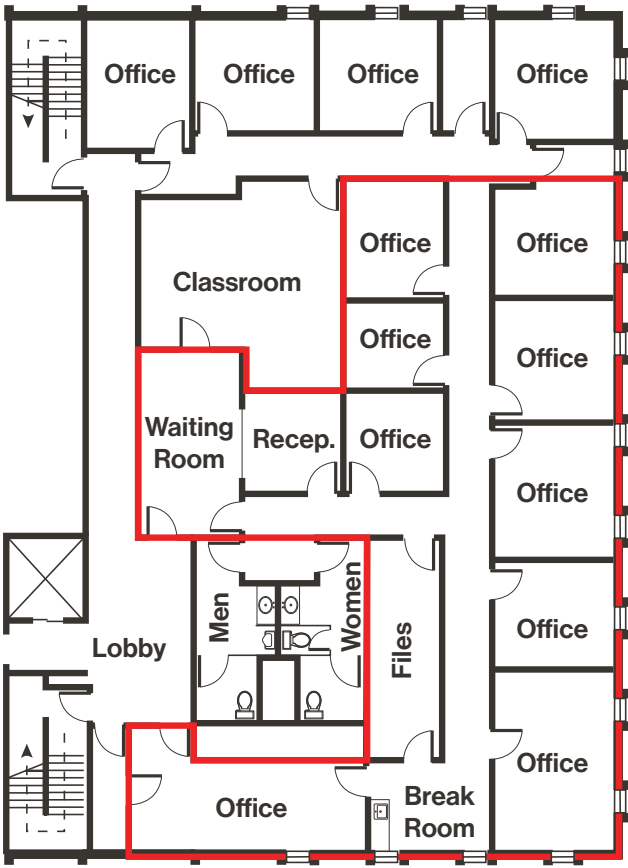
 Available

 **\$1.25 PSF FS**
Lease Rate

 **± 3,595 SF**
Square Footage

 **9**
Office Spaces


Available now






 Hotels / Casinos



 Airports

Reno-Tahoe
International Airport

 Retail



AVAILABLE

± 3,595 - 8,489 SF

 Retail

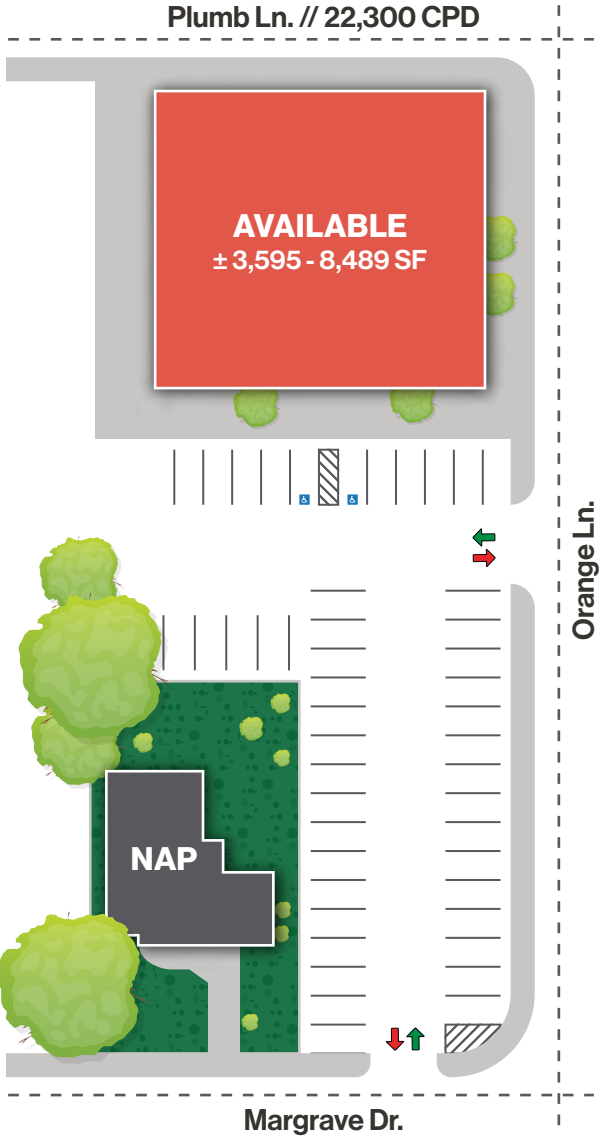


 Retail

Kietzke Ln. // 23,100 CPD

Plumb Ln. // 22,300 CPD



LOGIC Commercial Real Estate

Specializing in Brokerage and Receivership Services



Join our email list and
connect with us on LinkedIn

The information herein was obtained from sources deemed reliable; however LOGIC Commercial Real Estate makes no guarantees, warranties or representation as to the completeness or accuracy thereof.

For inquiries please reach out to our team.

Point of contact

Emma Robb

Vice President
775.443.8655
erobb@logicCRE.com
S.0183112

Michael Keating, SIOR

Partner
775.386.9727
mkeating@logicCRE.com
S.0174942