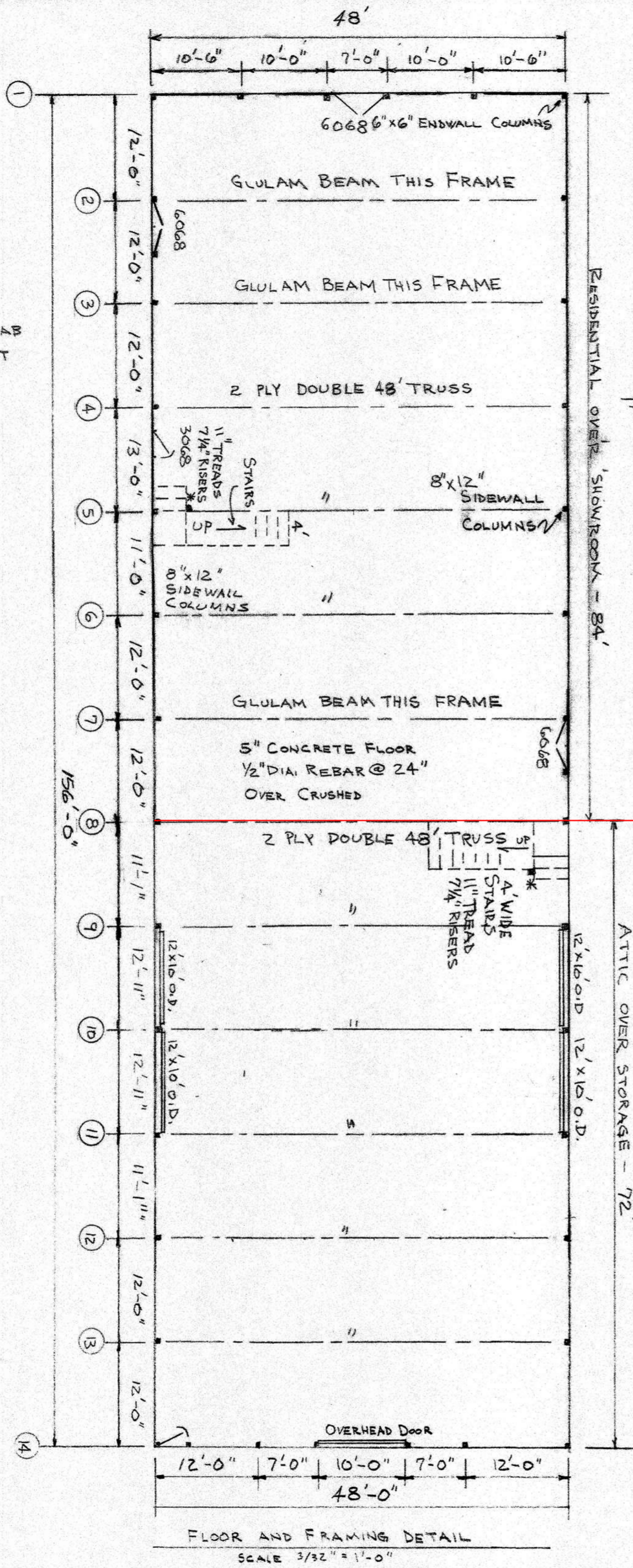


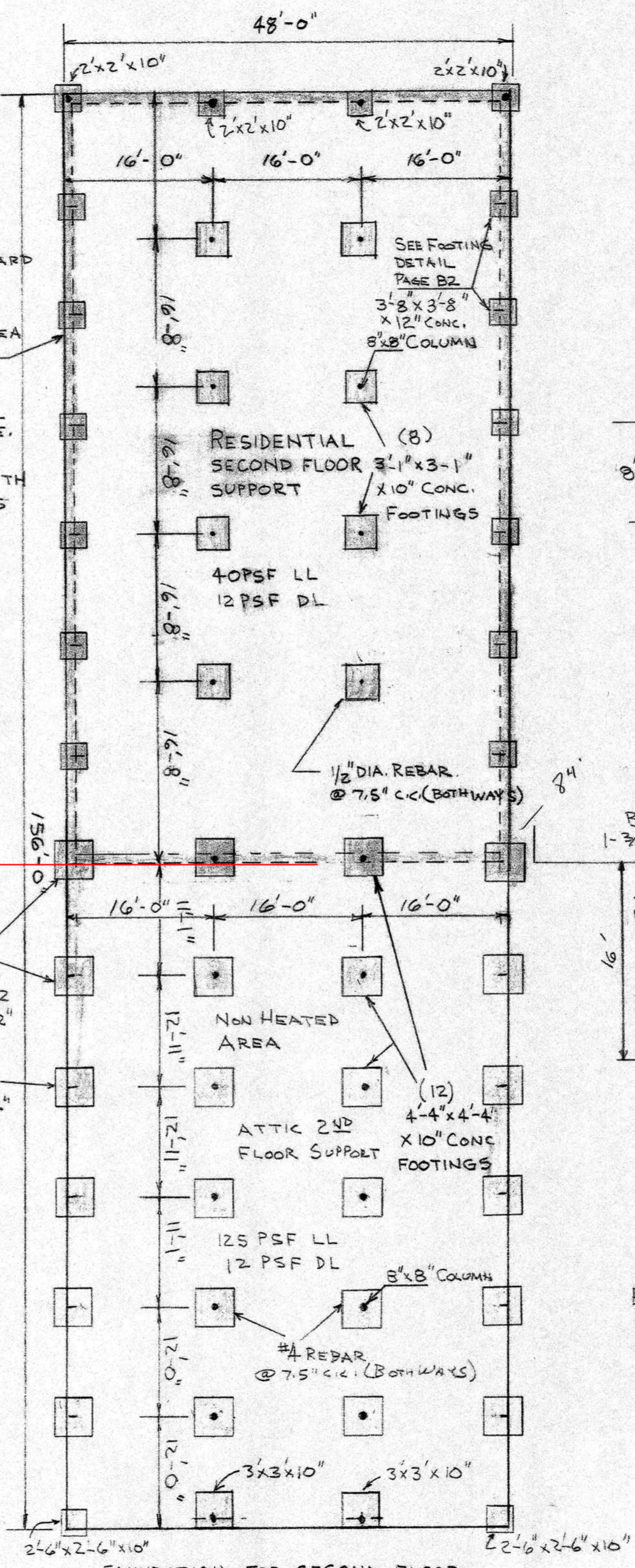
\* THICKEN SLAB AT STAIR POST 13" X 13" X 10"



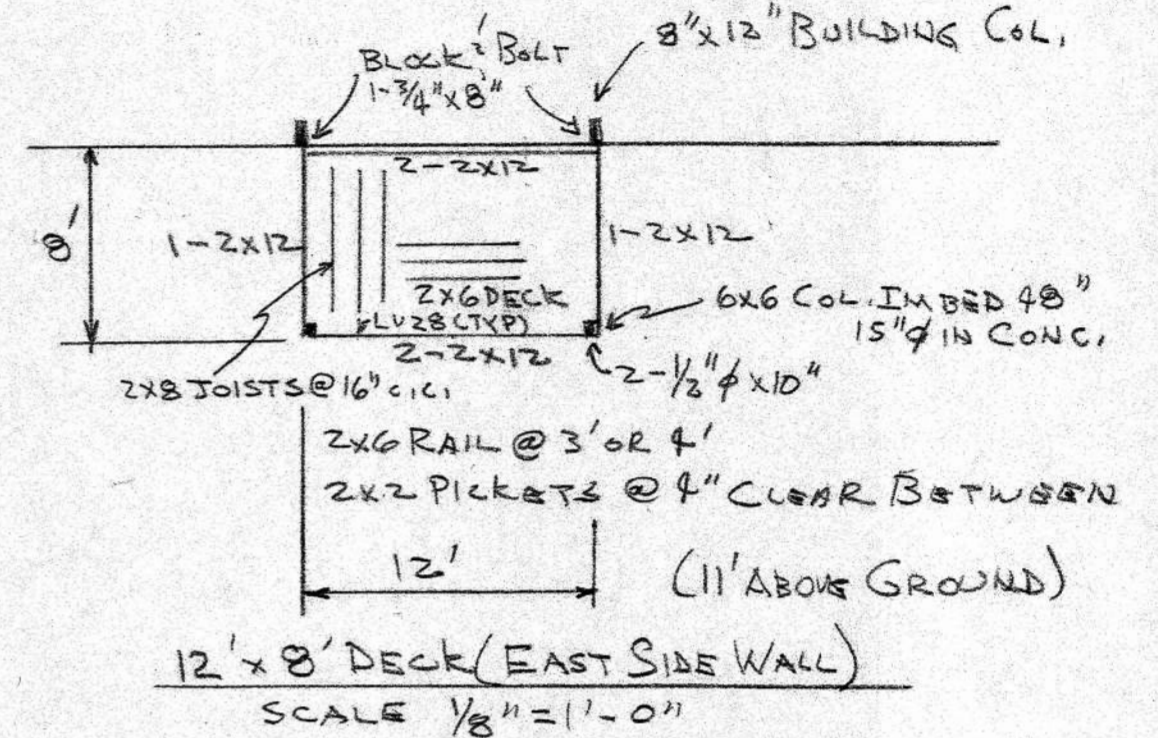
FLOOR AND FRAMING DETAIL  
SCALE 3/32" = 1'-0"

INSULATION BOARD UNDER SLAB AT PERIMETER OF THE HEATED AREA 48' X 84'

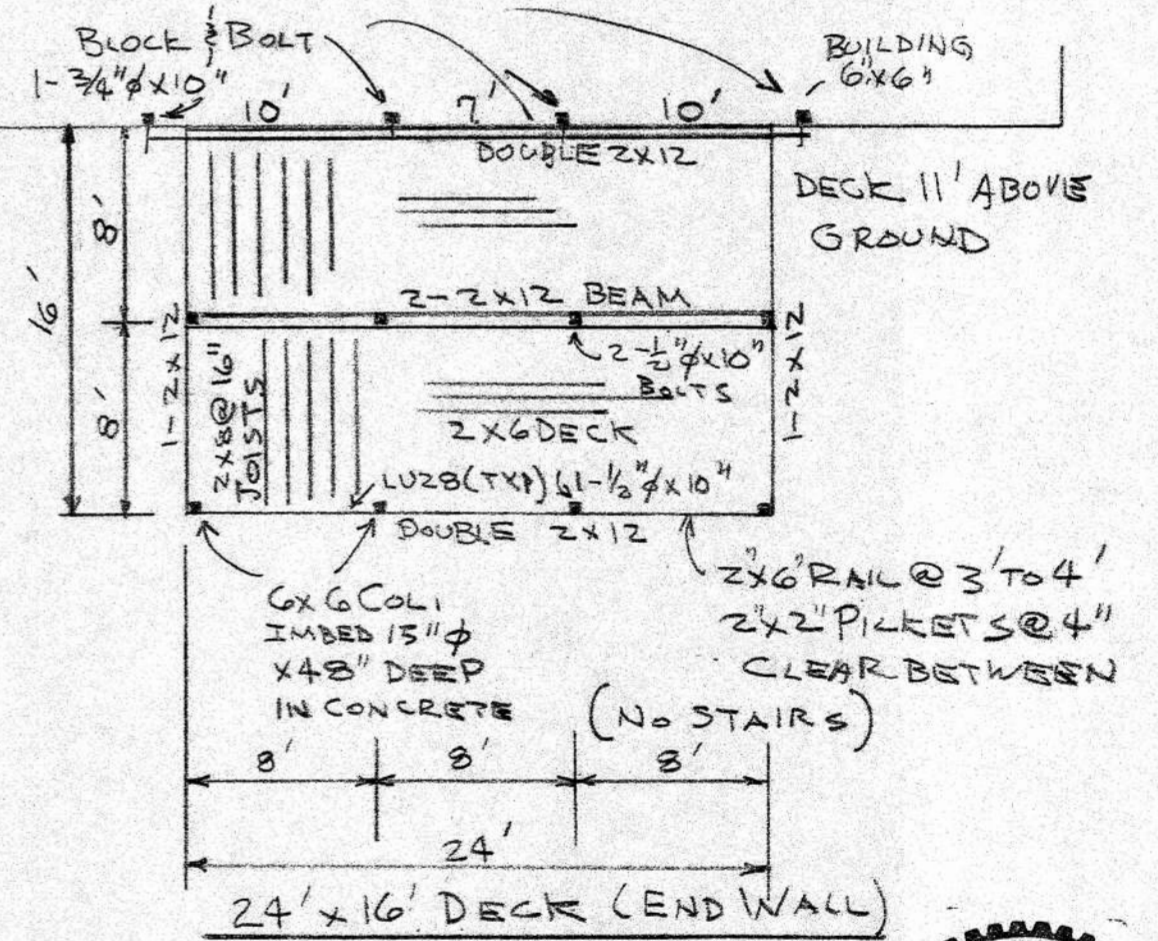
FOUNDATION NOTE  
TRAVIS WAMBEKE, P.E.  
OF STRATA, INC.  
NOTES SOIL STRENGTH WILL BE IN EXCESS OF 1500 LBS PER SQUARE FOOT



FOUNDATION FOR SECOND FLOOR  
SCALE 3/32" = 1'-0"

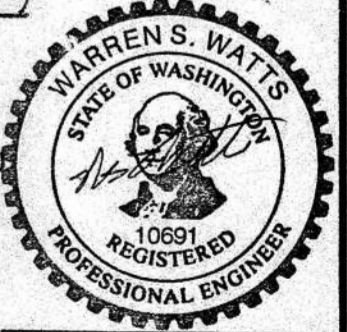


12' X 8' DECK (EAST SIDE WALL)  
SCALE 1/8" = 1'-0"



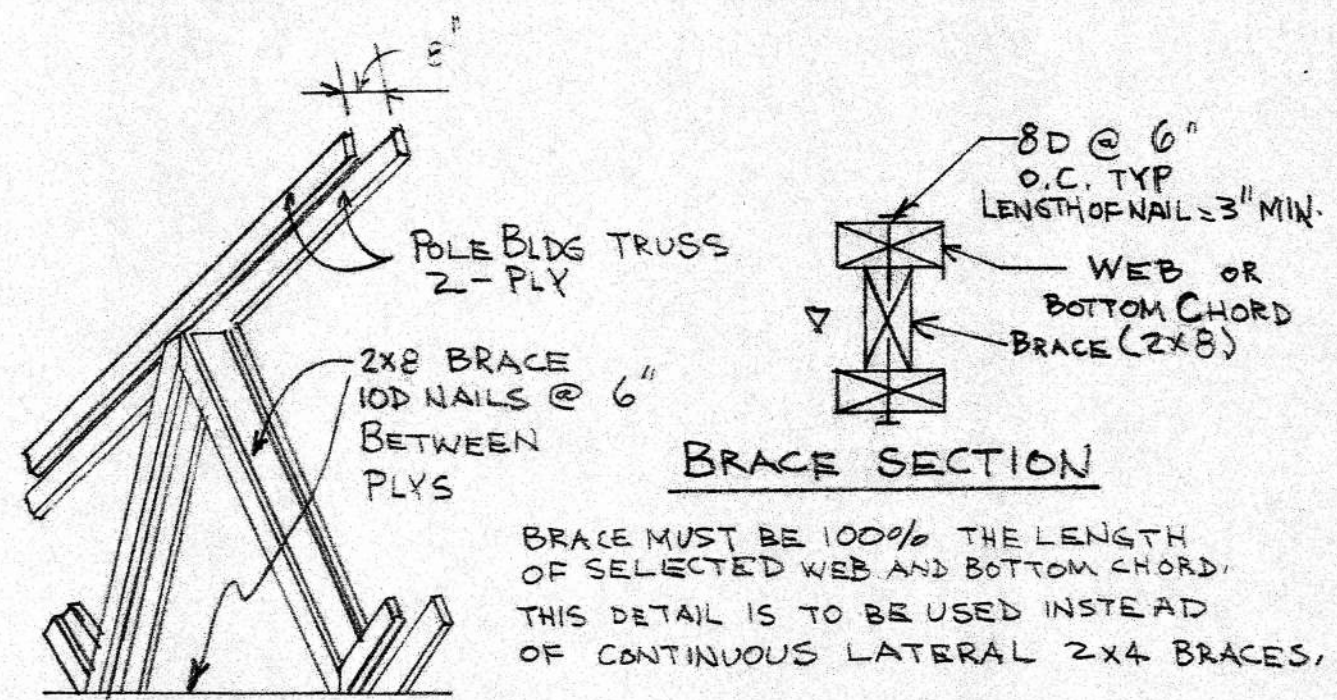
24' X 16' DECK (END WALL)

ENGINEER: WARREN WATTS  
W W ENGINEERING  
3435 CLEMENS ADDITION  
ASOTIN, WA. 99402  
(509) 243-4003



EXPIRES 5/22/05

REV 10/04	BY: CLG/KG	DATE: 10/29/04
DRAWN BY: [Signature]		
REVISED 12/29/04		
FOUNDATION AND FRAMING		
BALDWIN BUILDING COMPANY		DRAWING NUMBER 81-1104

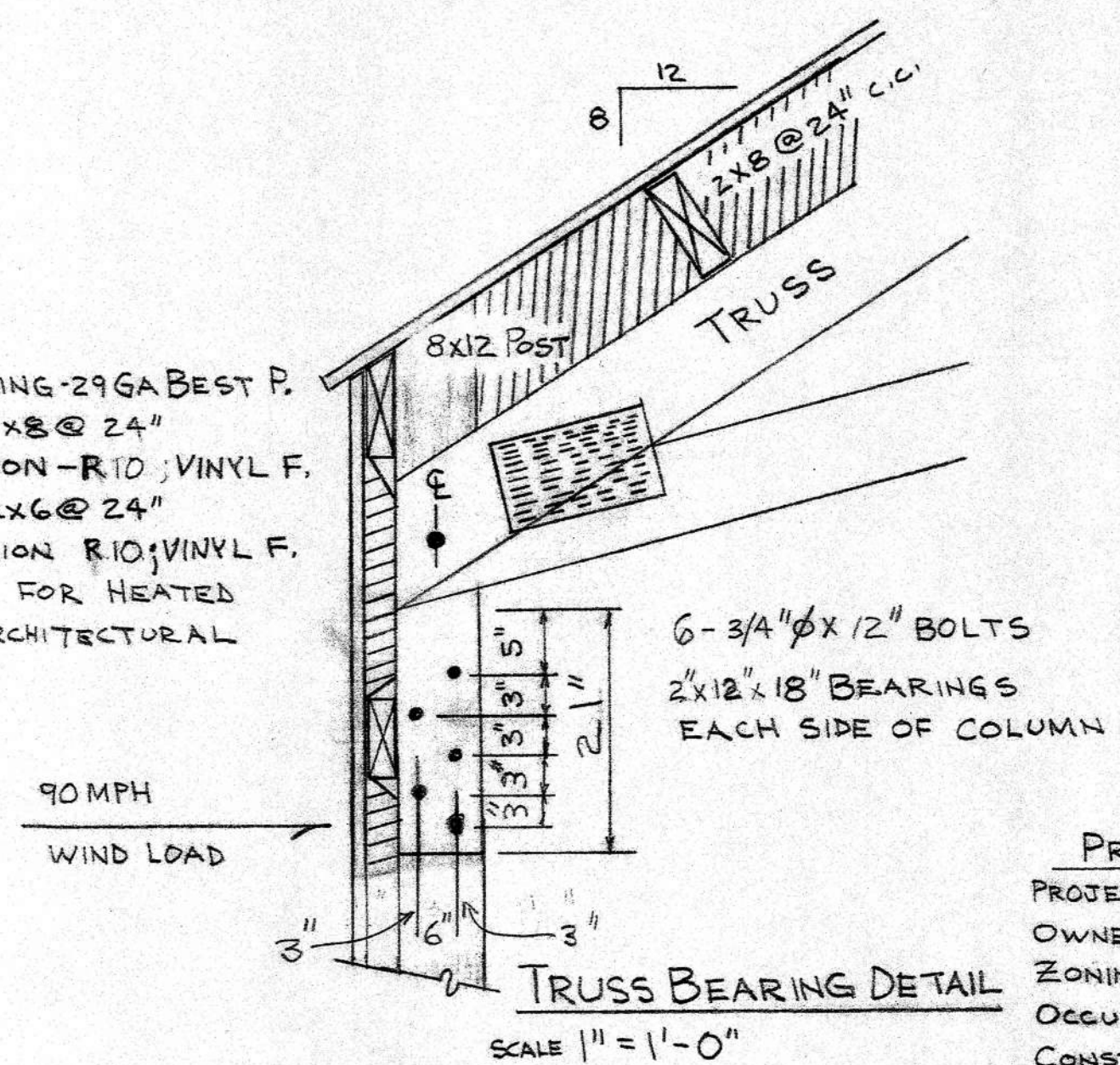


LATERAL BRACE DETAIL

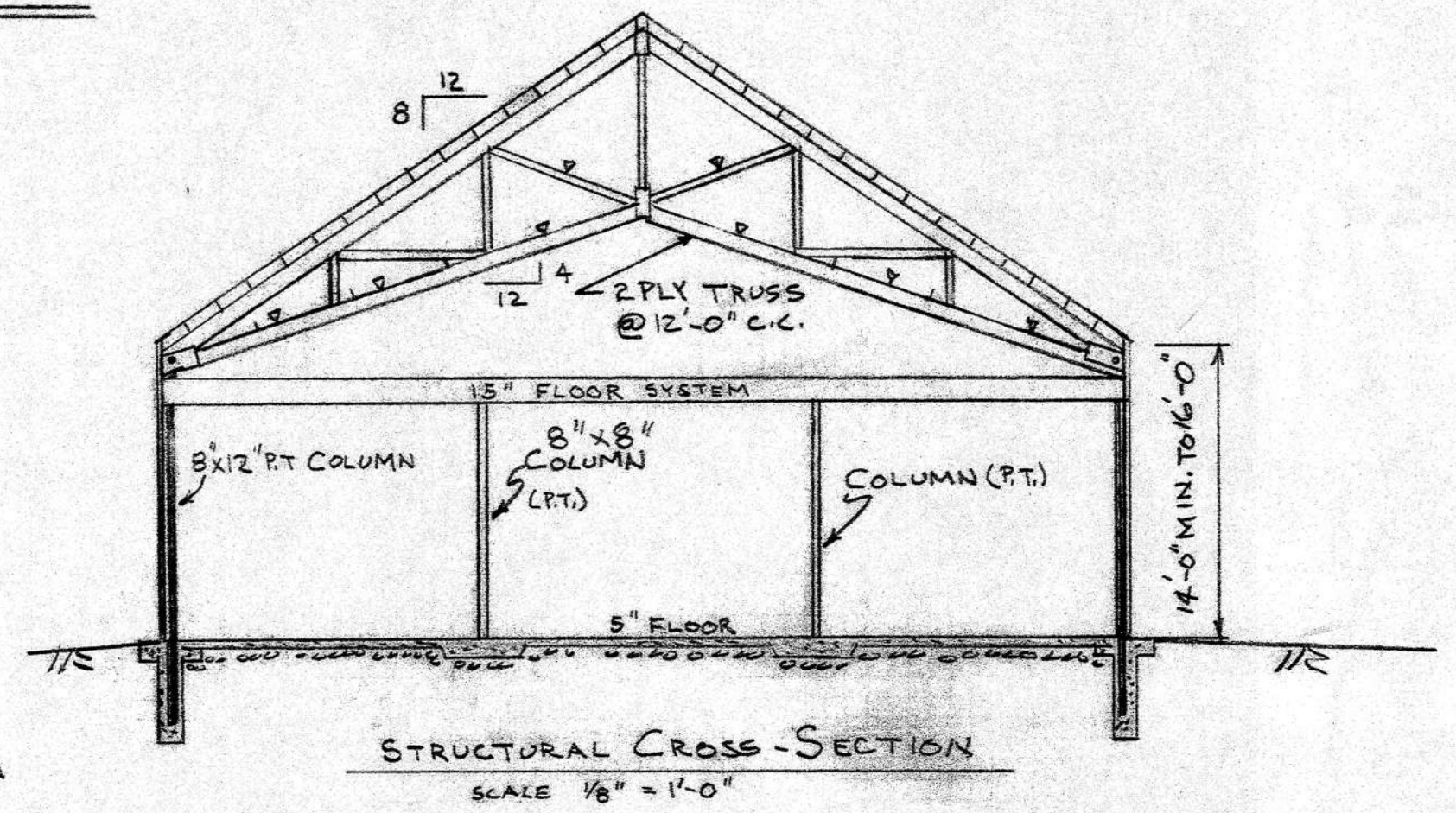
TRUSS DATA

TRUSS TYPE 48 FT RSZ (SCISSOR)  
 LOADING: SNOW 40 PSF LL  
 MAT'L 10 PSF DL  
 LOAD REDUCTION FOR 8 ON 12 SLOPE: 3.50 PSF  
 ACTUAL DESIGN LOAD: 36.5 PSF LL 10 PSF D.L.  
 2x8 BRACING - CONTINUOUS BETWEEN SELECTED 2 PLY WEBS  
 ENGINEERED, STAMPED TRUSS DWGS BY MFR.  
 ROOF PURLINS AT 24" C.C., 2x8 WITH UNSUPPORTED SPAN OF  
 12'-6" MAX + TRUSS WITH OF 11" = 13'-5" MAX BAY WIDTH  
 PER W.W.P.A. (DOUG. FIR-LARCH No. 2)

ROOF WALL SIDING-29GA BEST P.  
 ROOF PURLIN 2x8 @ 24"  
 ROOF INSULATION-R10; VINYL F.  
 WALL GIRTS 2x6 @ 24"  
 WALL INSULATION R10; VINYL F.  
 ADDED R VALUE FOR HEATED  
 AREA WITH ARCHITECTURAL  
 DESIGN



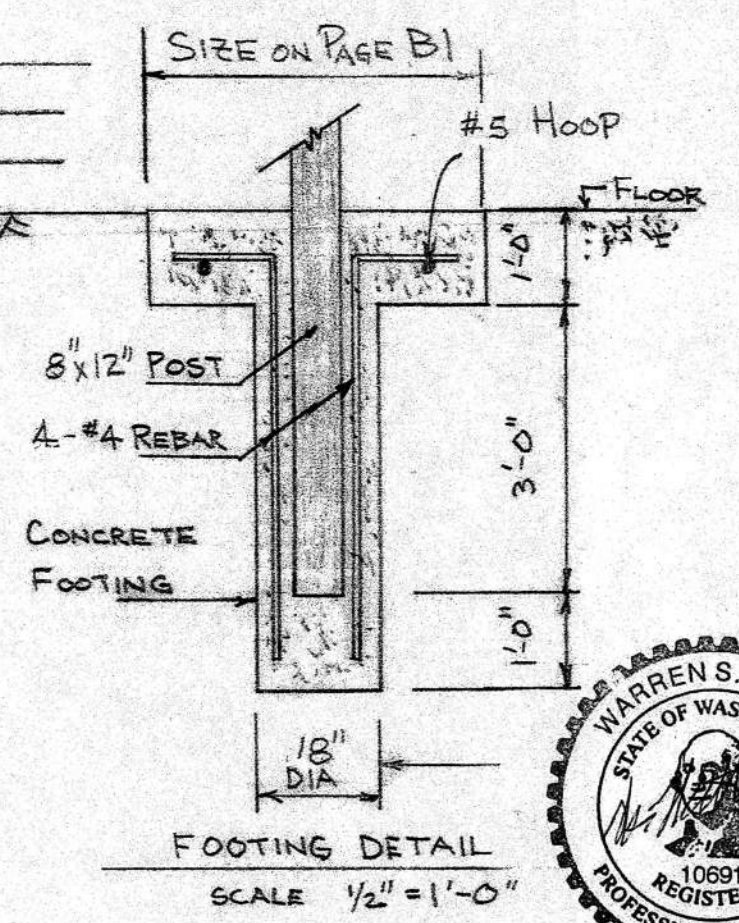
TRUSS BEARING DETAIL  
 SCALE 1" = 1'-0"



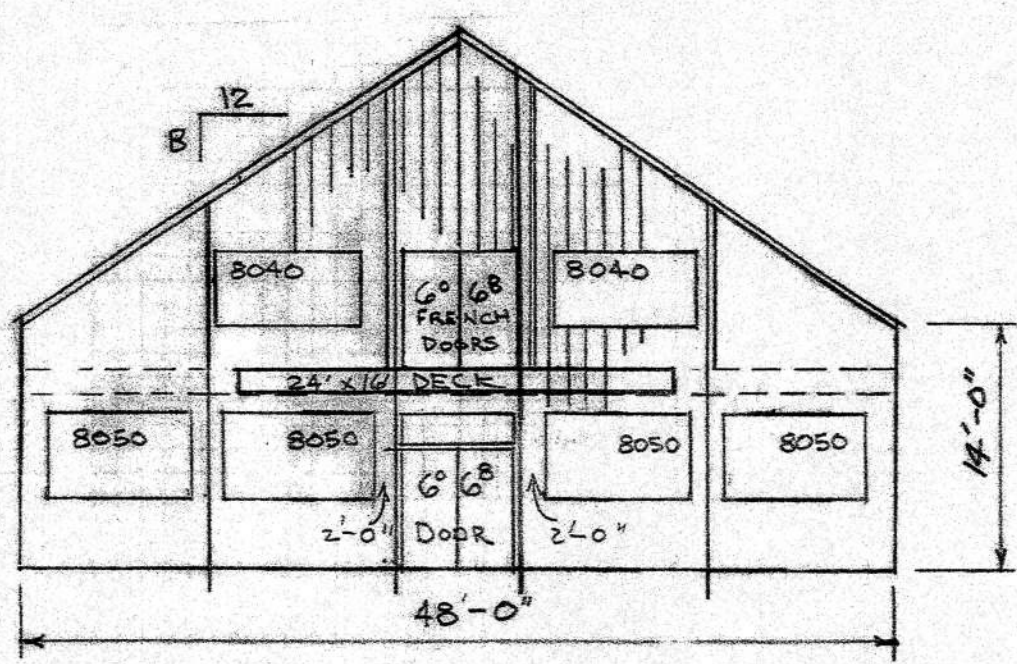
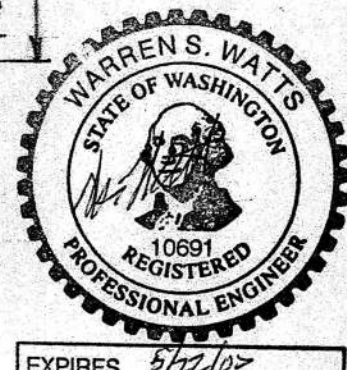
STRUCTURAL CROSS-SECTION  
 SCALE 1/8" = 1'-0"

PROJECT DATA

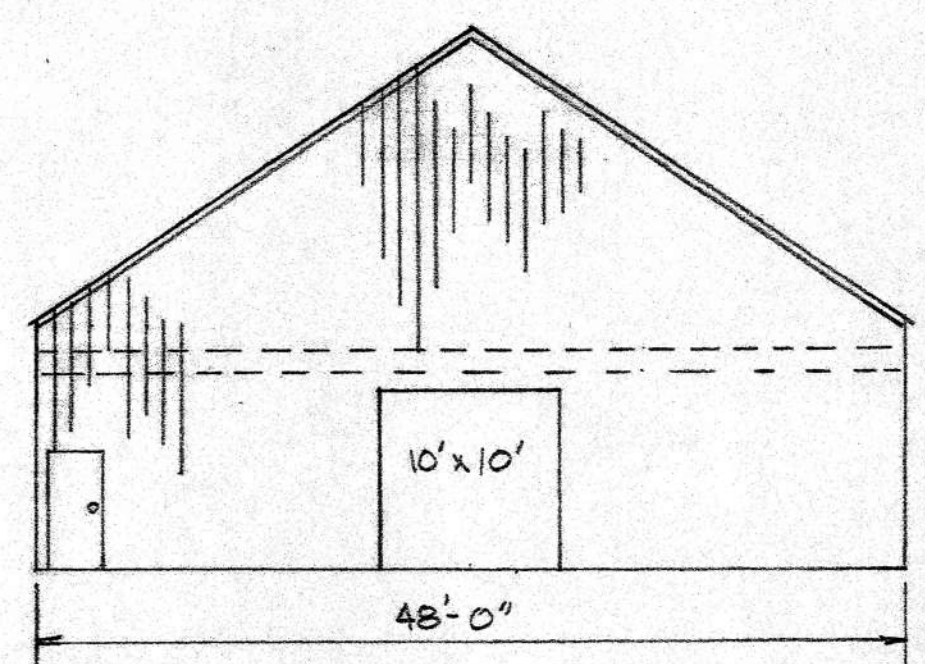
PROJECT ADDRESS \_\_\_\_\_  
 OWNER \_\_\_\_\_  
 ZONING \_\_\_\_\_  
 OCCUPANCY \_\_\_\_\_  
 CONSTRUCTION TYPE POLE TRUSS  
 BUILDING SIZE 7488 Sq. Ft.  
 FIRST FLOOR: SHOW ROOM TYPE 2496 Sq. Ft.  
 SHOP 1632 Sq. Ft.  
 STORAGE 3360 Sq. Ft.  
 SECOND FLOOR: RESIDENTIAL 3984 Sq. Ft.  
 ATTIC 3504 Sq. Ft.  
 CONTRACTOR BALDWIN BUILDING COMPANY  
 1080 W. COVE RD.  
 VIOLA, IDAHO 83872  
 882-4040



FOOTING DETAIL  
 SCALE 1/2" = 1'-0"

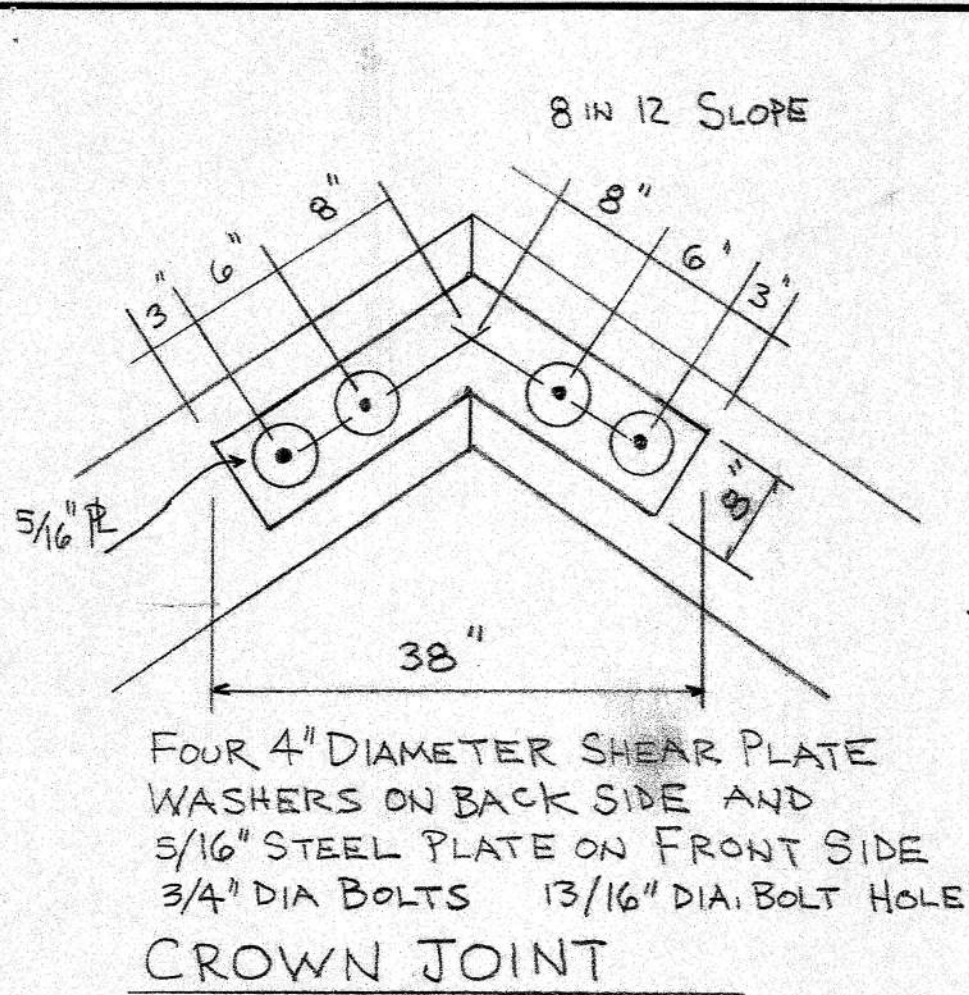


NORTH ENDWALL  
 3/32" = 1'-0"

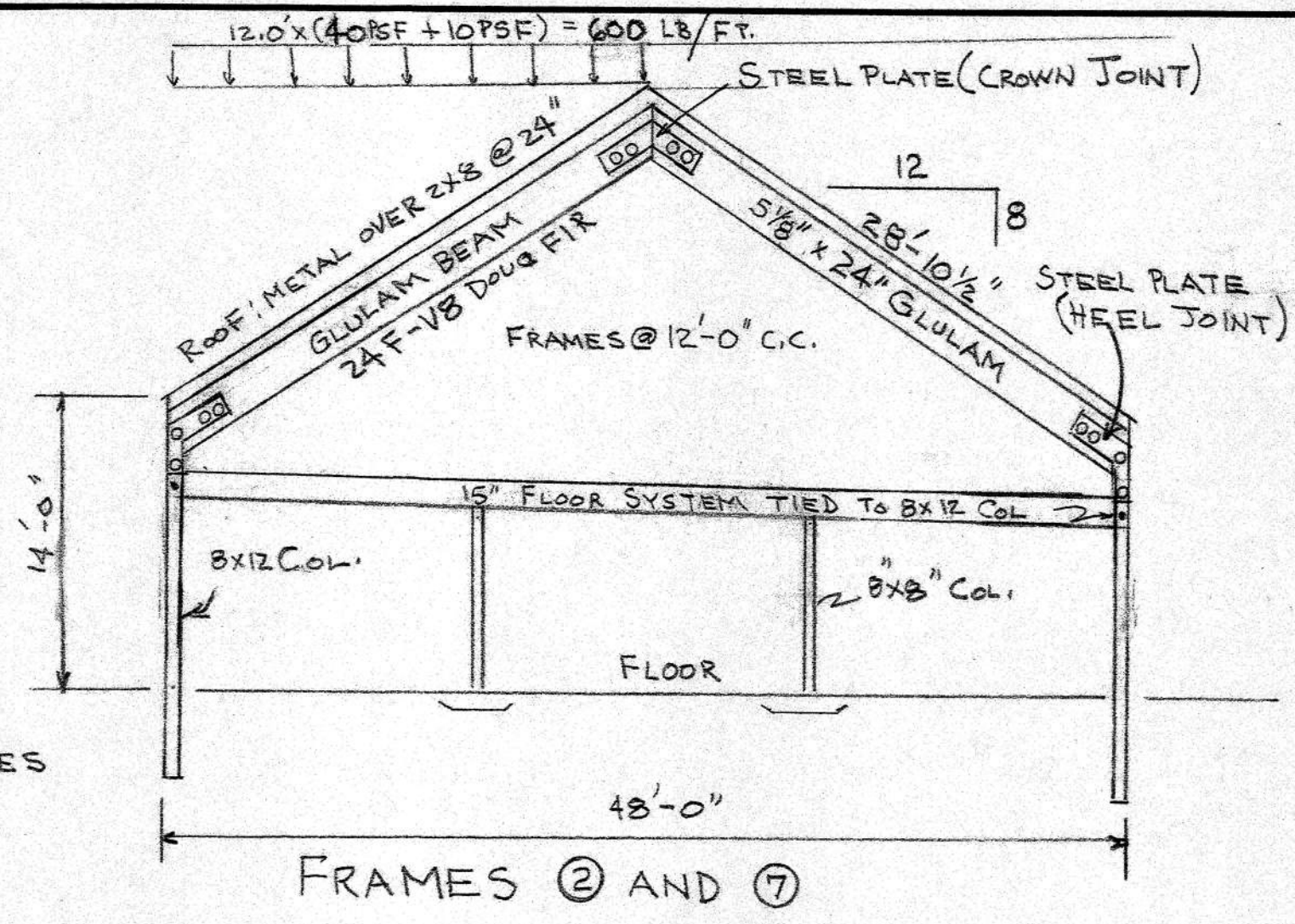


SOUTH ENDWALL  
 3/32" = 1'-0"

BEVTLOR, INC. [www.bevtlor.com](http://www.bevtlor.com)  
 1941 CIGGUE RD. (208) 232-2370  
 DRAWN BY WAB  
 REVISED 12/27/04  
 SECTION, ELEVATIONS, DETAILS  
 BALDWIN BUILDING COMPANY  
 DRAWING NUMBER BZ-1104

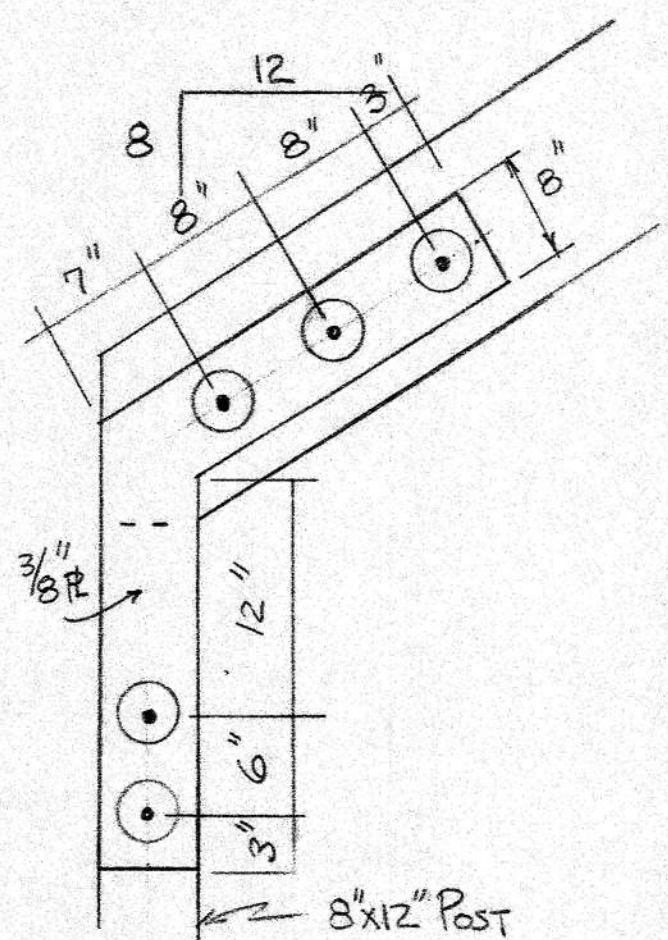


FOUR 4" DIAMETER SHEAR PLATE WASHERS ON BACK SIDE AND 5/16" STEEL PLATE ON FRONT SIDE  
 3/4" DIA BOLTS 13/16" DIA. BOLT HOLES  
CROWN JOINT

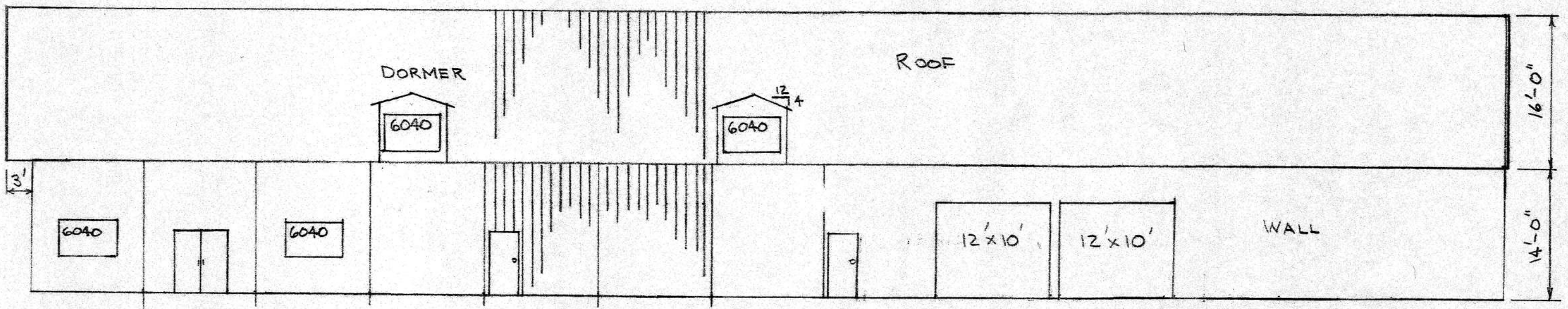
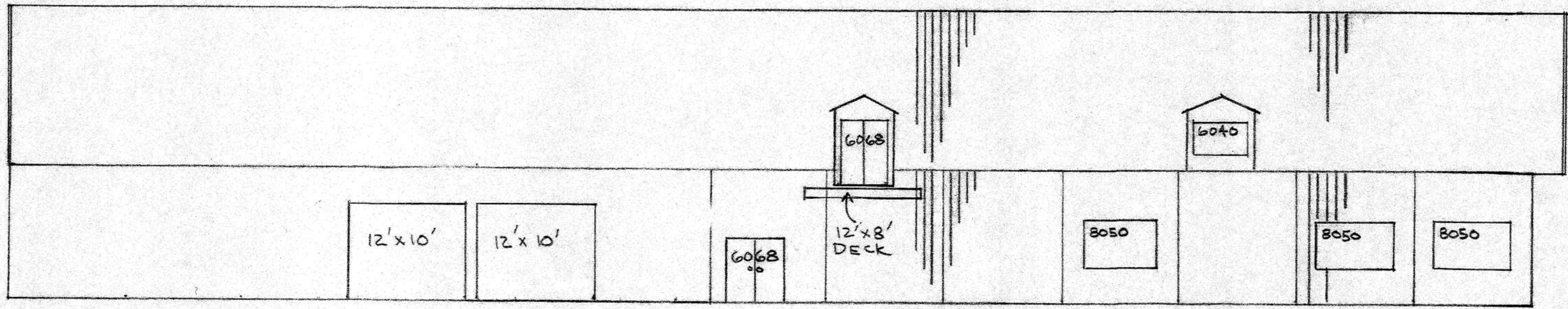


CONSTRUCTION AND ENGINEERING DETAILS

1. SIDEWALL COLUMNS SUPPORTING TRUSSES 8x12 P.T. WITH 48" EMBEDMENT / SEE FOOTING DET.
2. ENDWALL COLUMNS 6x6 P.T. WITH 48" EMBEDMENT x 15" ϕ CONCRETE
3. METAL ROOF AND WALL IS 29 GA. BEST PANEL - ROOF METAL ON 2x8 PURLINS @ 24" C.C. WITH #9 x 1" SCREWS AT 9" OC ON FLATS
4. GIRTS 2x6 No. 2 D.F. AT 24" OC
5. LATERAL BRACING BY PLACING 2x8 BRACE BETWEEN SELECTED WEBS AND BOTTOM CHORDS
6. WEB BRACING BY 2x8 BRACE - SEE DETAIL FOR 5. AND 6.
7. ROOF INSULATION IS R10 VINYL FACED FIBERGLASS
8. WALL INSULATION IS R10 " " "



5 4" DIA. SHEAR PLATE WASHERS ON BACK SIDE AND 3/8" STEEL PLATE ON FRONT SIDE.  
 3/4" DIA. BOLTS 13/16" DIA. BOLT HOLES  
HEEL JOINT



DRAWN BY *WFB*  
 REVISED 12/29/04

BALDWIN BUILDING COMPANY

DRAWING NUMBER  
 B3-1104