

824 EAST GATE DRIVE
MOUNT LAUREL, NJ 08054



FOR LEASE



INDUSTRIAL/FLEX



12,150 SF



PROPERTY DESCRIPTION

- 12,150 SF industrial/flex unit available
- 1,918 SF office area
- 2 tailgates
- 1 ramped drive-in door 14'x9'
- 18'1" - 18'7" clear ceiling heights
- 33' x 29' column spacing
- Fully sprinklered
- Two (2) restrooms
- Easy access to I-295 & NJ Turnpike

FOR MORE INFORMATION

Jonathan Klear

+1 856 433 1801
jonathan.klear@naimertz.com

Scott Mertz, SIOR

+1 856 802 6529
scott.mertz@naimertz.com

OWNED AND MANAGED BY



NAIMertz

NAI Mertz | 21 Roland Avenue
Mount Laurel, NJ 08054
+1 856 234 9600 | naimertz.com



824 EAST GATE DRIVE MOUNT LAUREL, NJ 08054



FOR LEASE



INDUSTRIAL / FLEX



12,150 SF



FOR MORE INFORMATION

Jonathan Klear

+1 856 433 1801
jonathan.klear@naimertz.com

Scott Mertz, SIOR

+1 856 802 6529
scott.mertz@naimertz.com

NAI Mertz

NAI Mertz | 21 Roland Avenue
Mount Laurel, NJ 08054
+1 856 234 9600 | naimertz.com



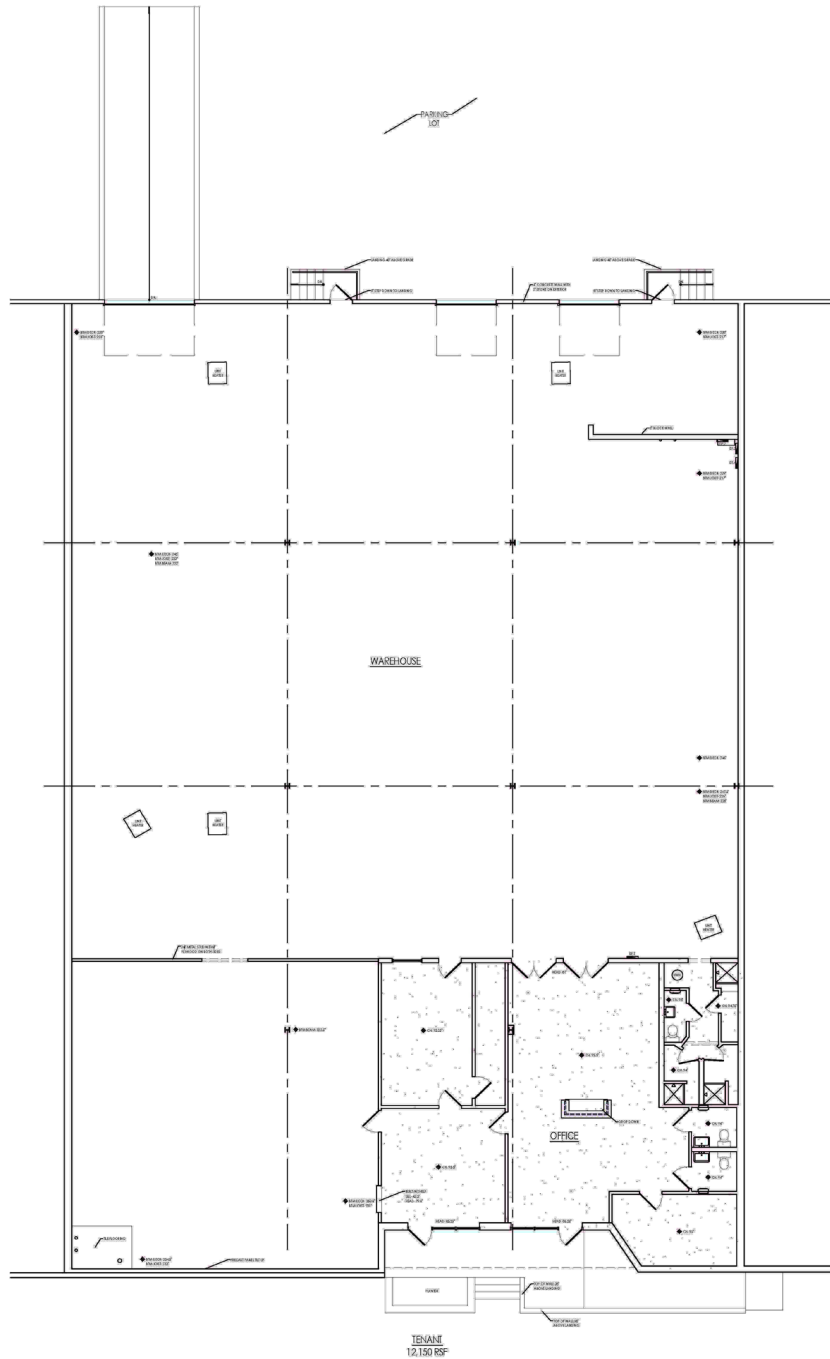
824 EAST GATE DRIVE MOUNT LAUREL, NJ 08054



FOR LEASE

INDUSTRIAL / FLEX

12,150 SF



FOR MORE INFORMATION

Jonathan Klear

+1 856 433 1801
jonathan.klear@naimertz.com

Scott Mertz, SIOR

+1 856 802 6529
scott.mertz@naimertz.com

NAIMertz

NAI Mertz | 21 Roland Avenue
Mount Laurel, NJ 08054
+1 856 234 9600 | naimertz.com

