



RITCHIE ROBINSON

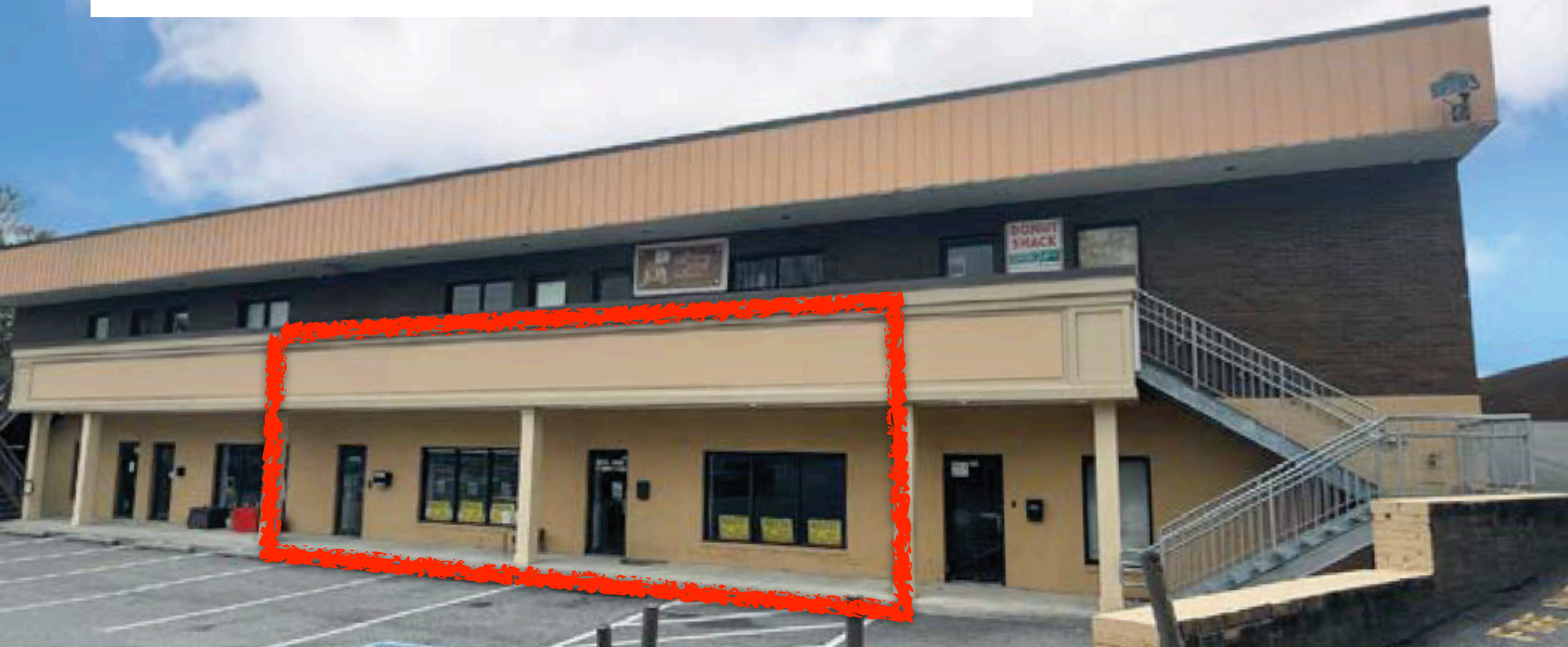
497 RITCHIE HIGHWAY | SEVERNA PARK, MD 21146



FOR LEASE - 2,000 - 4,000 SF

Office-Retail in Rear with Access to Asbury Drive

2,000 SF - 4,000 SF NOW AVAILABLE!



**FORMER MARTIAL ARTS SPACE, SUITABLE
FOR VARIOUS RETAIL/OFFICE USES
\$14.50/PSF, NNN**

LOCATIONAL OVERVIEW

RITCHIE ROBINSON
497 RITCHIE HIGHWAY
SEVERNA PARK, MD 21146

Asbury Drive 13,906 cars per day

Ritchie Highway 55,545 cars per day

Robinson Road 10,165 cars per day

SEVERNA PARK MARKETPLACE

- KOHL'S
- McDonald's
- MOD
- Giant
- petco
- FIVE GUYS
- Office DEPOT

PARK PLAZA

- noodles
- M&T Bank
- WELLS FARGO
- Cafe Rio
- TACO BELL
- PNC
- FIVE BELOW
- JOANN
- UPS

- Starbucks
- Chick-fil-A
- MR.TIRE

ROYAL FARMS

SHERWIN WILLIAMS

Exxon

Advance Auto Parts
Clement Hardware

Walgreens

Auto Zone

ROBINSON CROSSING CENTER

- ALDI
- SHERWIN WILLIAMS
- Celebree
- MATTRESS FIRM
- DOLLAR TREE
- Romolo's
- FAS

Auto Zone

RITCHIE ROBINSON

497 RITCHIE HIGHWAY
SEVERNA PARK, MD 21146

Ryan Brassel

ryan@rossocre.com

C | 410.507.3144

John A. Rosso, SIOR

john@rossocre.com

C | 410.802.1909



www.ROSSOCRE.com

One Annapolis Street | Suite 101 | Annapolis, MD 21401 | www.RossoCRE.com

While we have no reason to doubt the accuracy of any of the information supplied, we cannot, and do not, guarantee its accuracy. All information should be independently verified prior to a purchase or lease of the property. We are not responsible for errors, omissions, misuse, or misinterpretation of information contained herein and make no warranty of any kind, express or implied, with respect to the property or any other matters.