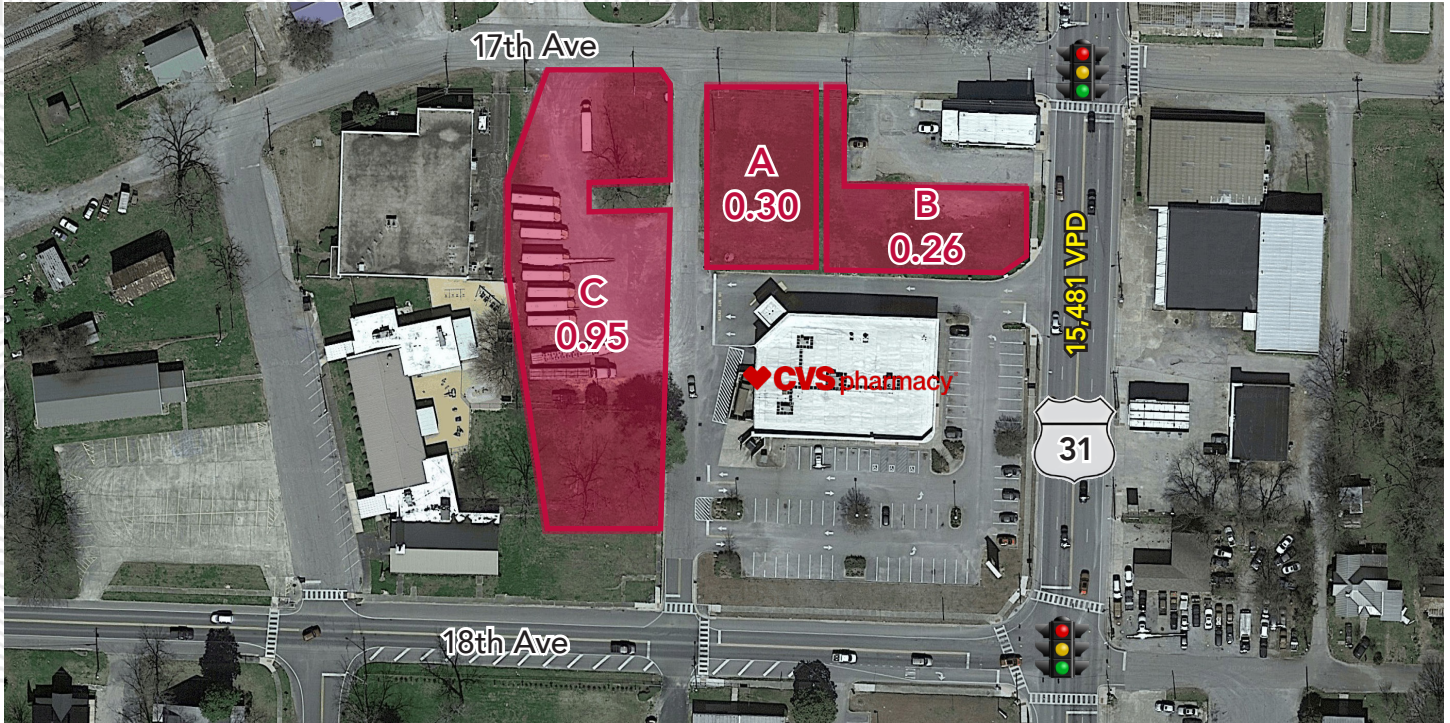




3 Lots Available Off US-31

8370 Highway 31 Calera, AL 35040



FOR SALE

Property Highlights

- 3 lots adjacent to CVS available
- Lot A: 0.30 acres
- Lot B: 0.26 acres
- Lot C: 0.95 acres
- Outstanding opportunity on US-31, one of the main commuter routes to/from Birmingham
- Call for more information



ACRES
0.26-0.95



TRAFFIC
15,481



ACCESS
Highway

Demographics	3 mile	5 mile	10 mile
Population	10,042	24,281	37,667
Households	3,685	8,983	13,875
Daytime Pop	9,184	16,424	29,927
Med HH Income	\$67,692	\$71,794	\$70,212

Joe Strauss, CCIM jstrauss@retailspecialists.com 205.393.3215

Walker Reich walker@retailspecialists.com 205.441.9981

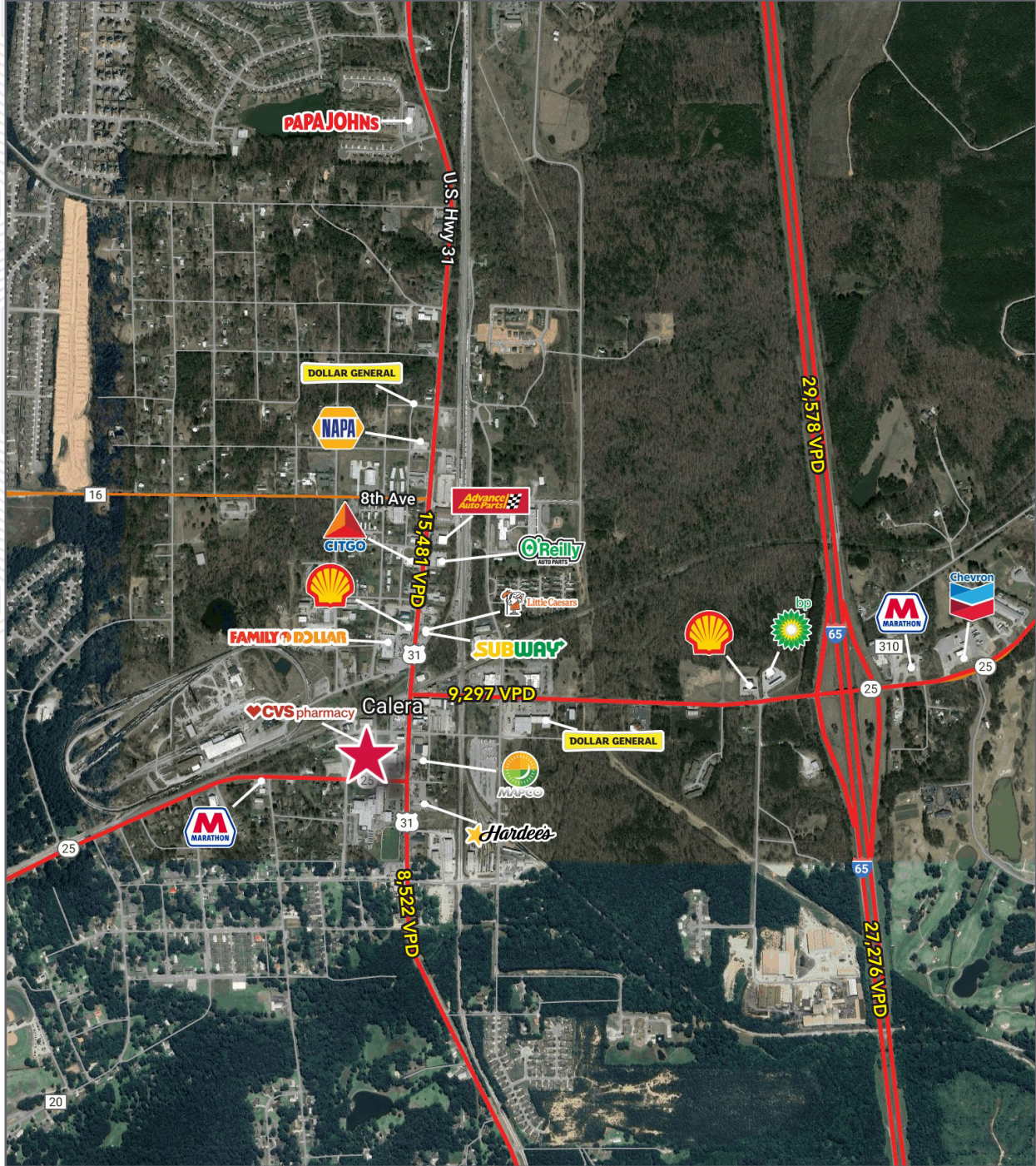


retail specialists

3 Lots Off US-31

8370 Highway 31 Calera, AL 35040

Market Aerial



FOR SALE

Joe Strauss, CCIM jstrauss@retailspecialists.com 205.393.3215

Walker Reich walker@retailspecialists.com 205.441.9981