



INDUSTRIAL PROPERTY IN THE HEART OF THE HAYNESVILLE

1936 HWY. 3248, MANSFIELD, LA 71052

- 10,000± SF including large warehouse with ample clear height on 6.29 acres
- Private offices
- Fenced and rocked yard
- Tons of parking
- Conveniently located at the intersection of Highways 84 and 3248
- Additional land available
- \$8,000/month NNN



For more information, contact:

Jason Brady | 318.222.2244 | jbrady@vintagerealty.com

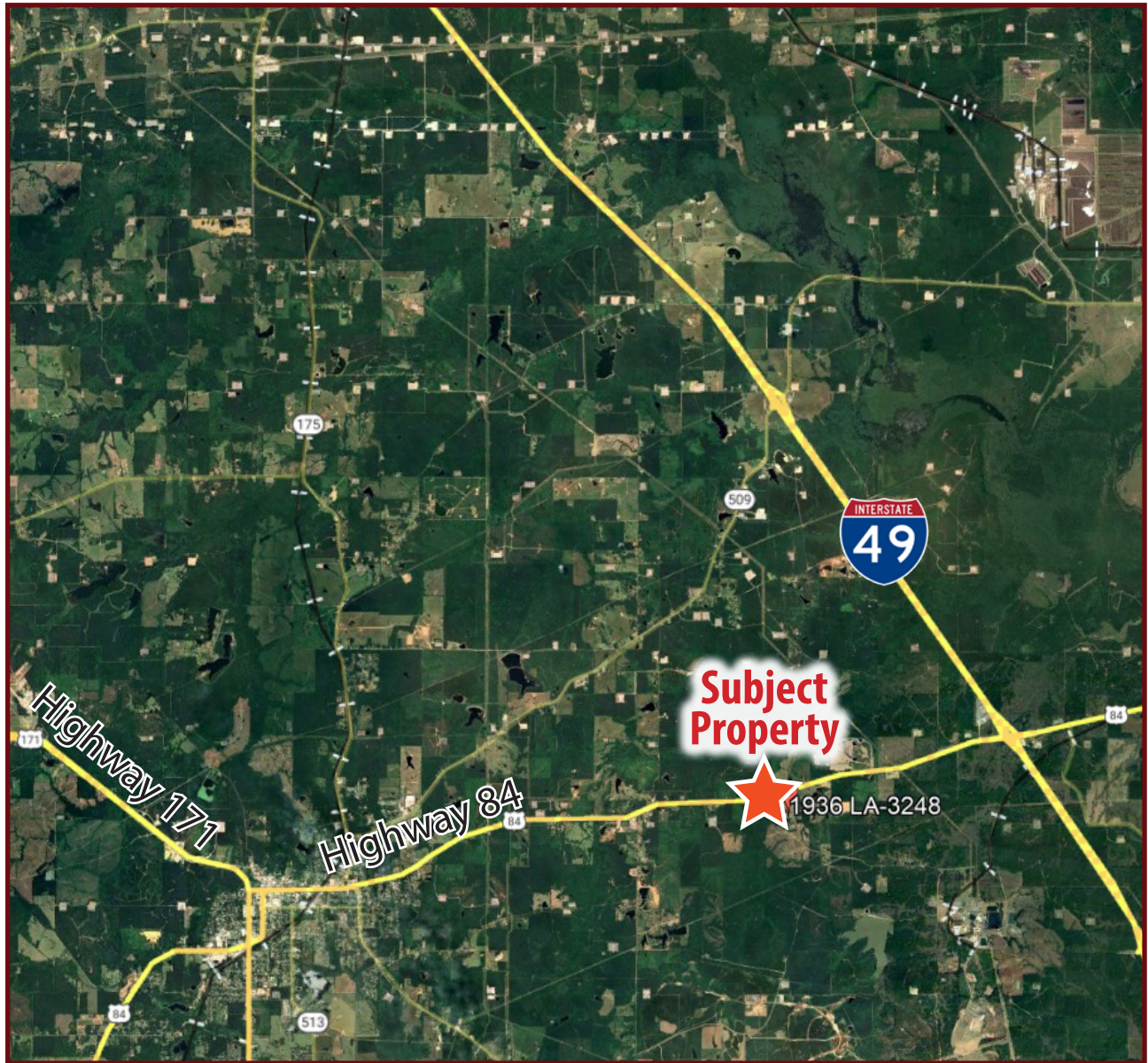
Chris Susilovich | 318.222.2244 | csusilovich@vintagerealty.com

ALL INFORMATION CONTAINED HEREIN IS BELIEVED TO BE ACCURATE, BUT IS NOT WARRANTED AND NO LIABILITY OF ERRORS OR OMISSIONS IS ASSURED BY EITHER THE PROPERTY OWNER OR VINTAGE REALTY COMPANY OR ITS AGENTS AND EMPLOYEES. PRICES AS STATED HEREIN AND PRODUCT AVAILABILITY IS SUBJECT TO CHANGE AND/OR SALE OR LEASE WITHOUT PRIOR NOTICE, AND ALL SIZES AND DIMENSIONS ARE SUBJECT TO CORRECTION. REV 2/2024



INDUSTRIAL PROPERTY FOR LEASE

1936 HWY 3248
MANSFIELD, LA 71052



For information, contact:

Jason Brady | 318.222.2244 | jbrady@vintagerealty.com

Chris Susilovich | 318.222.2244 | csusilovich@vintagerealty.com

ALL INFORMATION CONTAINED HEREIN IS BELIEVED TO BE ACCURATE, BUT IS NOT WARRANTED AND NO LIABILITY OF ERRORS OR OMISSIONS IS ASSURED BY EITHER THE PROPERTY OWNER OR VINTAGE REALTY COMPANY OR ITS AGENTS AND EMPLOYEES. PRICES AS STATED HEREIN AND PRODUCT AVAILABILITY IS SUBJECT TO CHANGE AND/OR SALE OR LEASE WITHOUT PRIOR NOTICE, AND ALL SIZES AND DIMENSIONS ARE SUBJECT TO CORRECTION. 2/2024

INDUSTRIAL PROPERTY FOR LEASE

1936 HWY 3248
MANSFIELD, LA 71052



For information, contact:

Jason Brady | 318.222.2244 | jbrady@vintagerealty.com

Chris Susilovich | 318.222.2244 | csusilovich@vintagerealty.com

ALL INFORMATION CONTAINED HEREIN IS BELIEVED TO BE ACCURATE, BUT IS NOT WARRANTED AND NO LIABILITY OF ERRORS OR OMISSIONS IS ASSURED BY EITHER THE PROPERTY OWNER OR VINTAGE REALTY COMPANY OR ITS AGENTS AND EMPLOYEES. PRICES AS STATED HEREIN AND PRODUCT AVAILABILITY IS SUBJECT TO CHANGE AND/OR SALE OR LEASE WITHOUT PRIOR NOTICE, AND ALL SIZES AND DIMENSIONS ARE SUBJECT TO CORRECTION. 2/2024