



Valuable Existing Conditions with Great Views

The Commons at Renaissance
2011 Renaissance Boulevard, King of Prussia, PA



- Last suite available! Direct access from lobby
- Ideal for professional uses
- Abundant parking available
- Energy efficient HVAC systems with individual utility metering
- Park setting with landscaped jogging trails, picnic areas and beautiful pond
- Best in/out access in entire park - 1st right from main entrance
- Amenities abound - child care, hotels, retail & restaurants within minutes of site
- Served by SEPTA Bus Route 95
- Strong ownership - professional on-site management

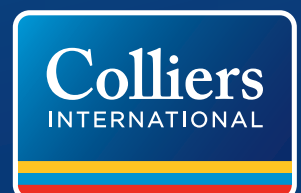
FOR MORE INFORMATION,
PLEASE CONTACT:

SANDY RICHARDSON

Senior Vice President

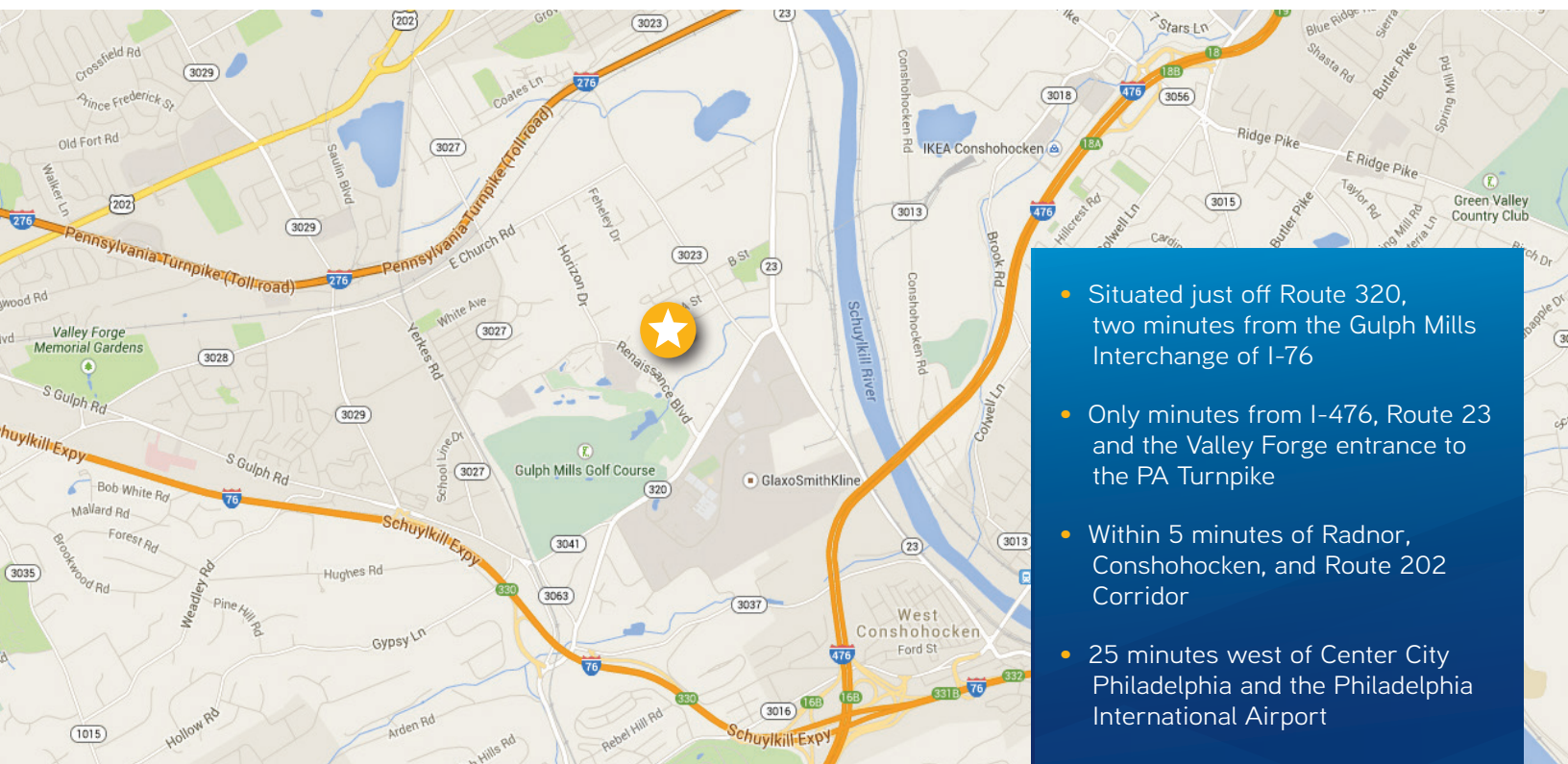
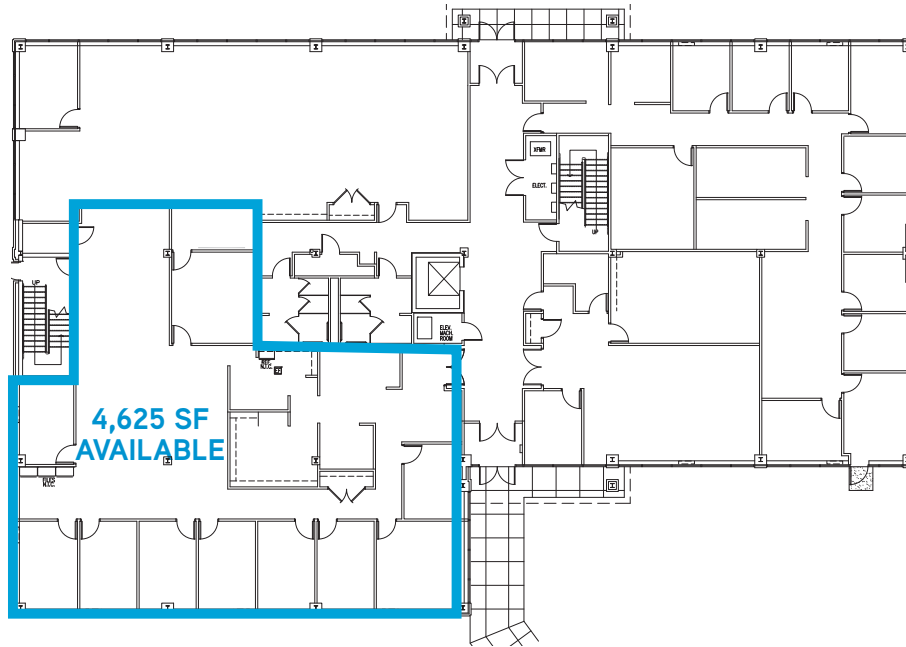
+1 215 928 7533

sandy.richardson@colliers.com



2011 Renaissance Boulevard, King of Prussia, PA

FIRST FLOOR



- Situated just off Route 320, two minutes from the Gulph Mills Interchange of I-76
- Only minutes from I-476, Route 23 and the Valley Forge entrance to the PA Turnpike
- Within 5 minutes of Radnor, Conshohocken, and Route 202 Corridor
- 25 minutes west of Center City Philadelphia and the Philadelphia International Airport



@colliersphilly



colliersphilly



colliers.com/philadelphia

The foregoing information was furnished to us by sources which we deem to be reliable, but no warranty or representation is made as to the accuracy thereof. Subject to correction of errors, omissions, change of price, prior sale or withdrawal from market without notice. The aerial image is intended to provide a general outline of the subject property. It is not a survey nor should it be relied upon for purposes of determining property lines or boundaries.

COLLIERS INTERNATIONAL
Ten Penn Center
1801 Market Street Street, Suite 500
Philadelphia, PA 19103
+1 215 925 4600

