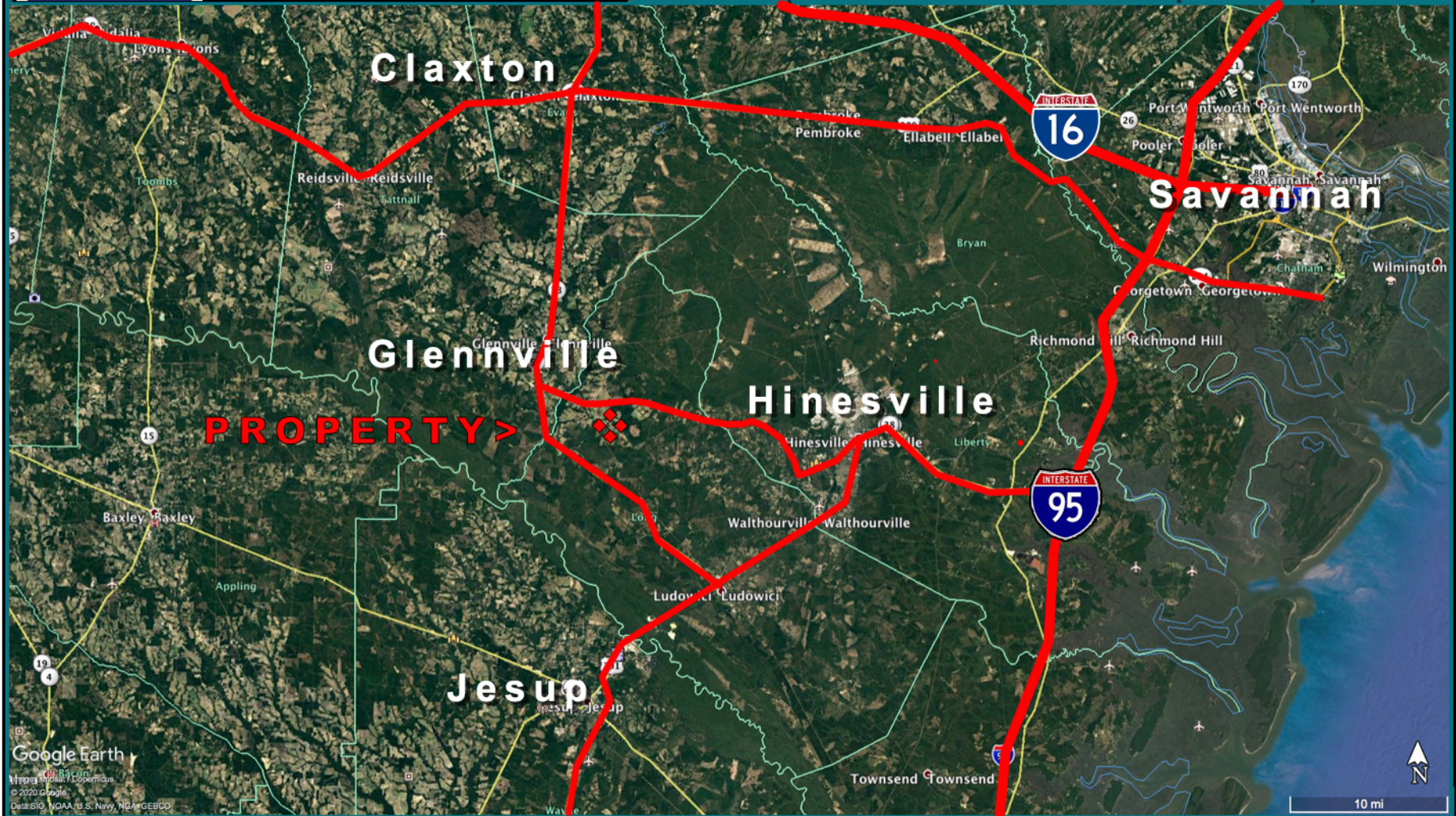


**DON WRIGHT & ASSOCIATES**  
Commercial Real Estate Services  
**(912) 638-4740**

**Fred Freyer**  
Associate Broker  
(912) 230-0539 (cell)  
[fred@fredfreyer.com](mailto:fred@fredfreyer.com)  
[www.donwrightcommercialrealestate.com](http://www.donwrightcommercialrealestate.com)

**2.31 Acres+- \$199,000**  
**Georgia Highway 196 Glennville, GA**  
**Zoned Commercial**  
**(no Dollar General competitors)**



This information has been obtained from sources deemed to be reliable but Don Wright and Associates makes no representations or warranties, expressed or implied, as to its accuracy. A Purchaser must verify all information and bears all risk for any inaccuracies.

# Easement

Proposed 266' Decel Lane with 100' Taper

SPEED LIMIT 55  
SR-196

The cross access easements (cross-hatched in green) will allow Teramore to access SR-196 through the DG property and to enter and exit through the permitted driveways of the proposed development.

PROPERTY >

Remaining Property:  
+/- 2.31 Acres

DOLLAR GENERAL  
Site

**DON WRIGHT**  
&  
**ASSOCIATES**  
Commercial Real Estate Services  
**(912) 638-4740**

**Fred Freyer**  
Associate Broker  
(912) 230-0539 (cell)  
fred@fredfreyer.com  
www.donwrightcommercialrealestate.com