

10344 66th Street North Pinellas Park, FL

MOVE-IN READY FULLFILLMENT CENTER | 20,000 – 60,000 SF
CLASS A WAREHOUSE



Property Overview



BUILDING SIZE
60,000 SF



DOCK COUNT
5 Docks



PARKING RATIO
95 Spaces



Facility Overview

BUILDING SPECS		BUILDING UTILITIES	
Address:	10344 66 th Street North, Pinellas, FL 33782	Power:	TBD
Building Size:	60,000 SF	Energy Efficiency:	Roof Mounted Solar Panels White Roof Deck
Office SF:	2,100 SF With 9 ft. Ceilings on the 1 st Floor Exceptional 2,100 SF 2nd Floor Break Room	Lighting:	LED
Acreage:	4.03 Acres	Sprinkler System:	ESFR Fire Suppression
Zoning:	4841 Distribution Warehouse	HVAC:	40,000 SF
Year Built:	Completed in 2020	Dock High Doors:	5 Dock High Doors
Ceiling Height:	28' - 30'	Drive-In Doors	2 Grade Level Doors
Column Spacing:	25 x 64	Parking:	95 Spaces
Roof:	24 Gage Standing Seam With R 19 Insulation	Restrooms:	4 in the Warehouse 2 in the Office 1 in the Break Room

Aerial



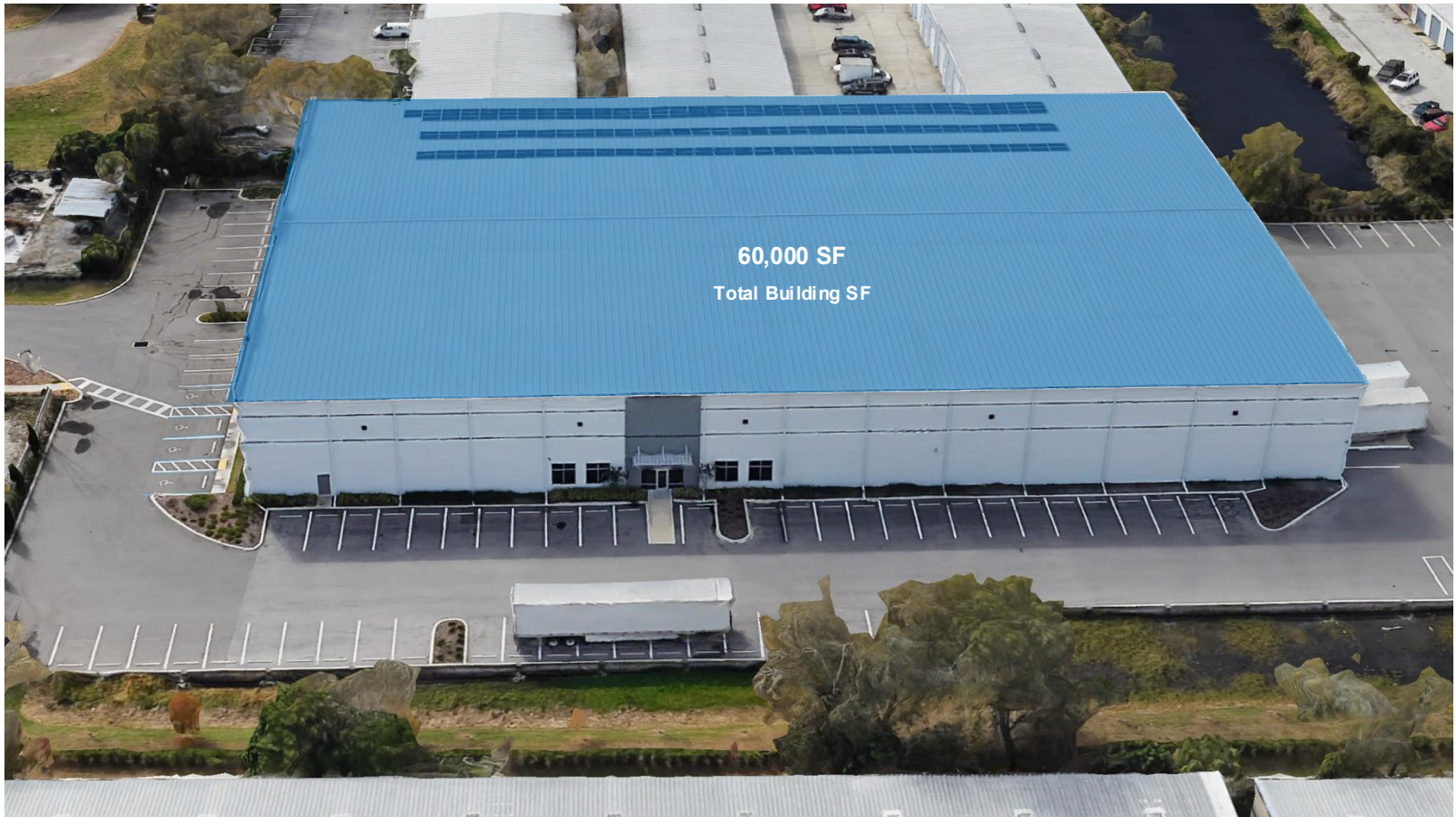
Aerial



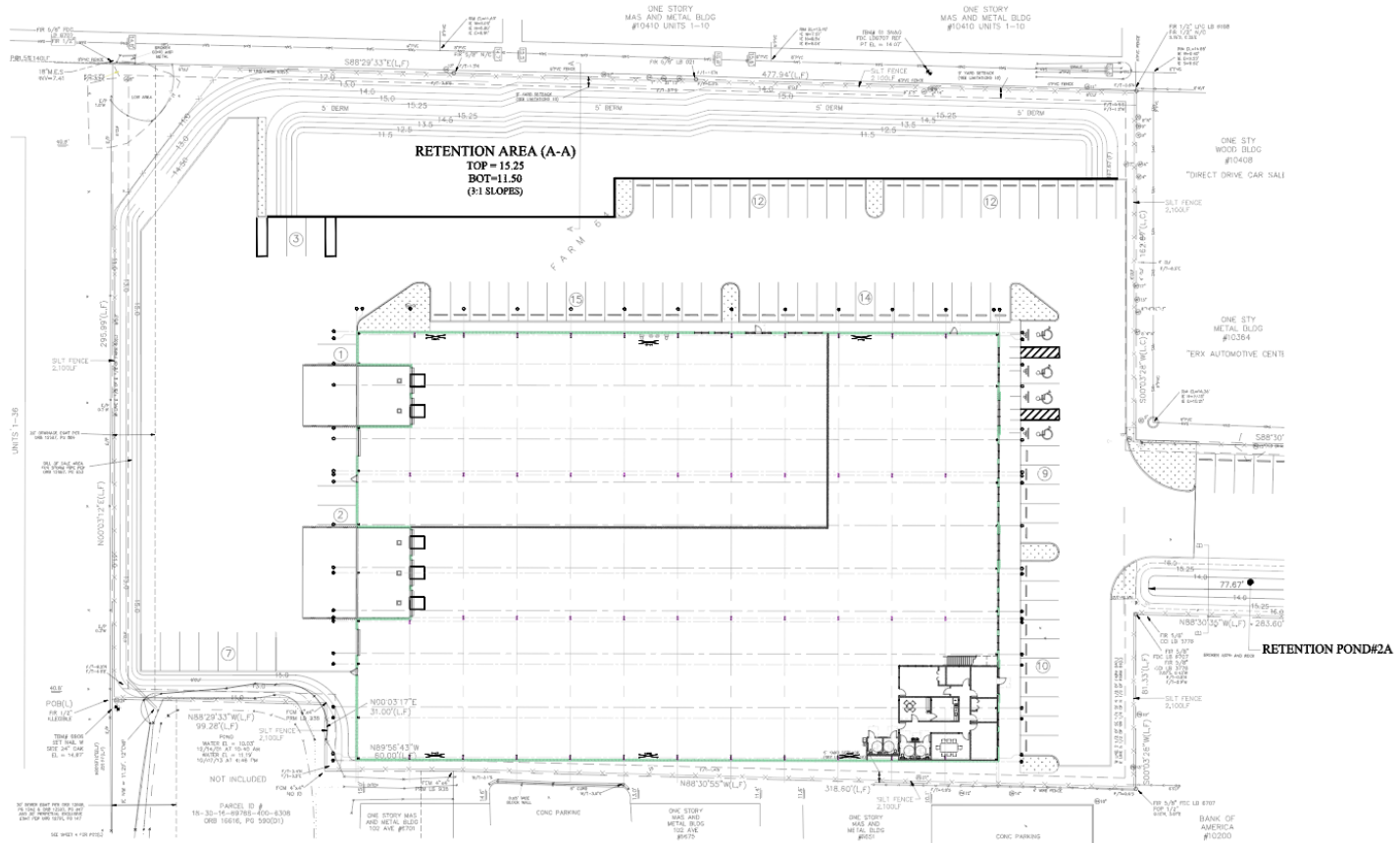
Aerial



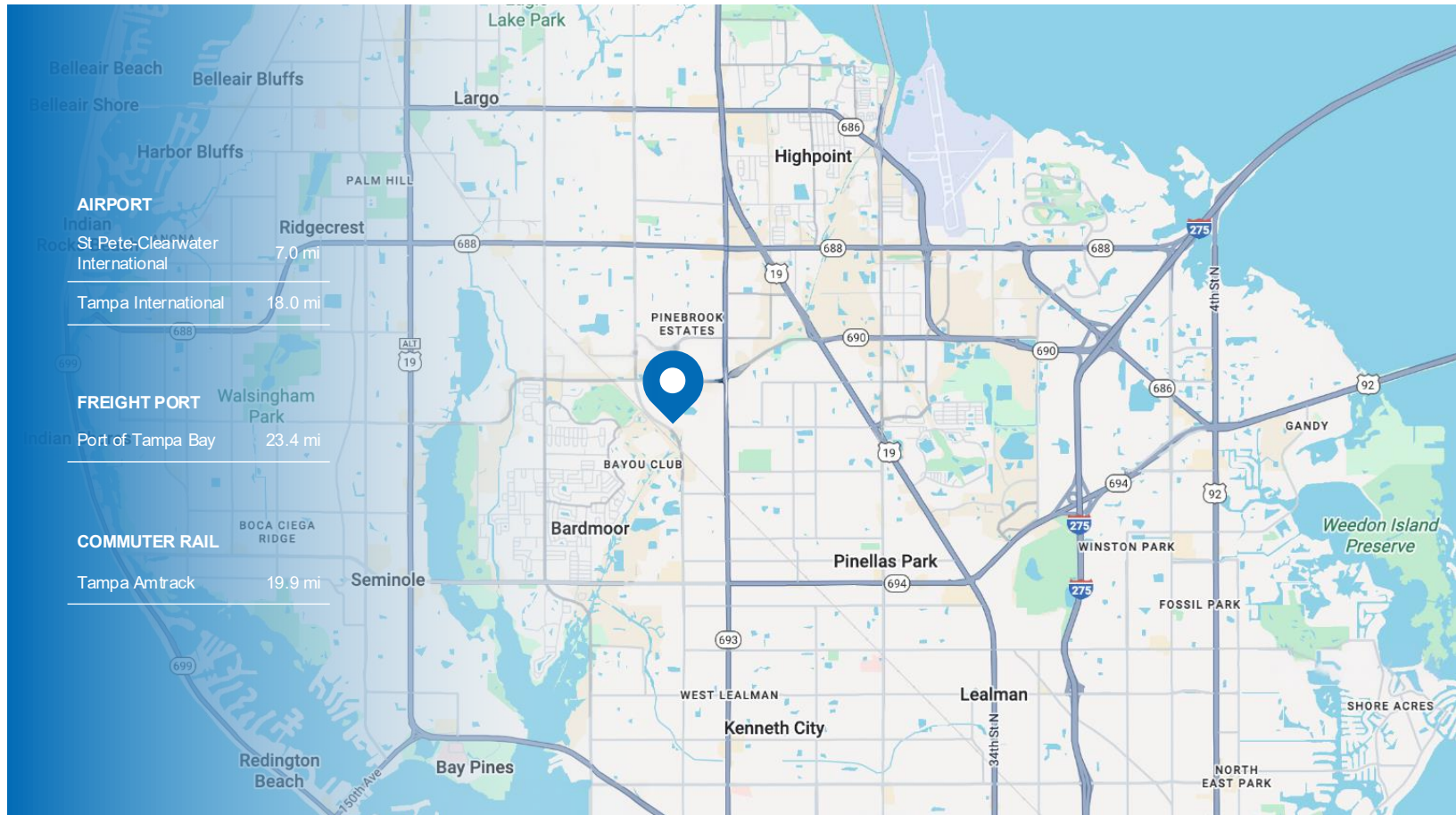
Aerial



Floor Plan



Location



Location



10344 66th Street North, Pinellas Park, FL

FOR ADDITIONAL INFORMATION

RICK NARKIEWICZ

Senior Managing Director

t 813-453-0797

rick.narkiewicz@nmrk.com

NEWMARK TAMPA

4221 W Boy Scout Blvd, Suite 440

Tampa, FL 33607

t 813-639-1111

NEWMARK

The information contained herein has been obtained from sources deemed reliable but has not been verified and no guarantee, warranty or representation, either express or implied, is made with respect to such information. Terms of sale or lease and availability are subject to change or withdrawal without notice.

NMRK.COM