



MEDICAL OFFICE SPACE  
FOR LEASE

15725 POMERADO ROAD  
SAN DIEGO, CA 92064

# project features



Class "A" Medical Office Project



944 - 4,321 SF Available



Move-in Ready



Efficient Floor Plans



Adjacent to Pomerado Hospital



Close to Restaurants, Hotels and Other Amenities



Convenient Access to I-15 at Camino Del Norte and Bernardo Center Drive, as well as Hwy 56



Tenant mix includes: Internal Medicine, Audiology, Pediatrics, OB/GYN, Radiology, Physical Therapy and Dentistry.

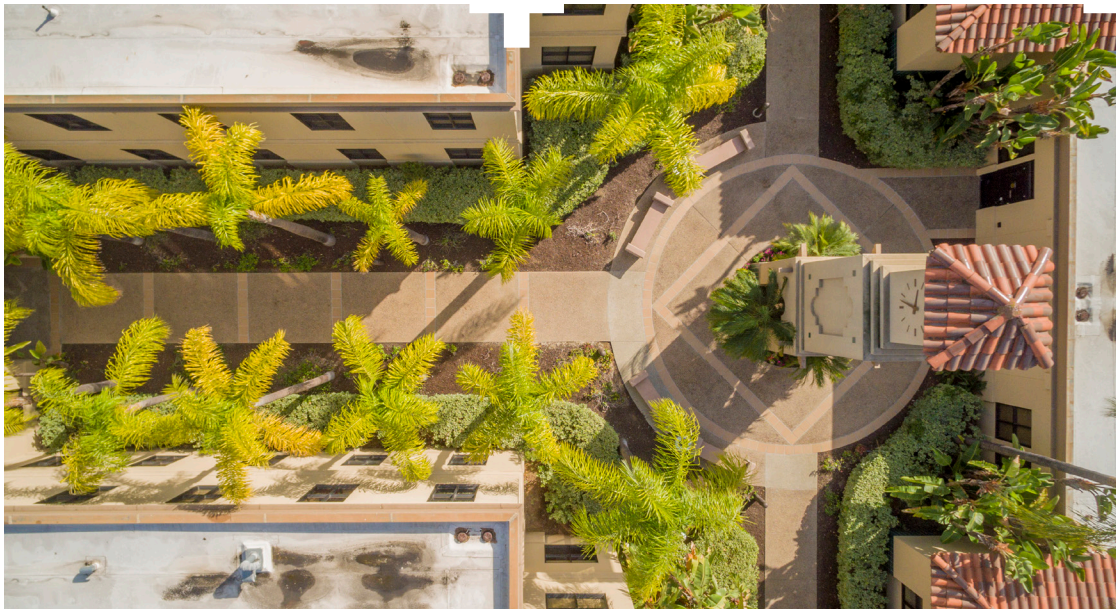


# availabilities

FLOOR	RENTABLE SF	SUITE
1	2,334	106
2*	2,331	201
2**	2,456	212
2	1,333	214
2*	1,990	218

\*Suites 201 & 218 may be combined for a total of 4,321 SF

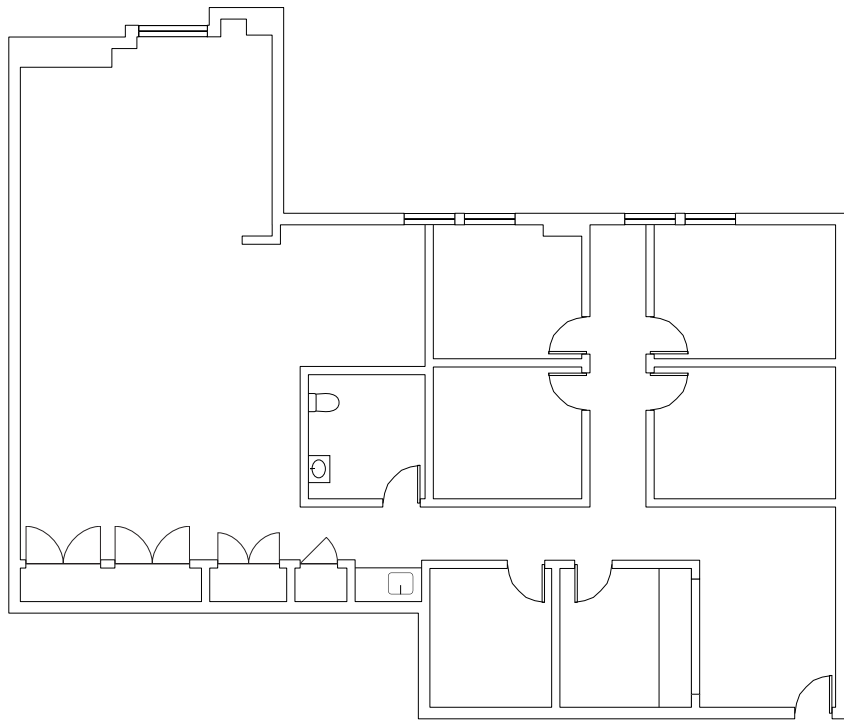
\*\*Suite 212 available 01/01/2022



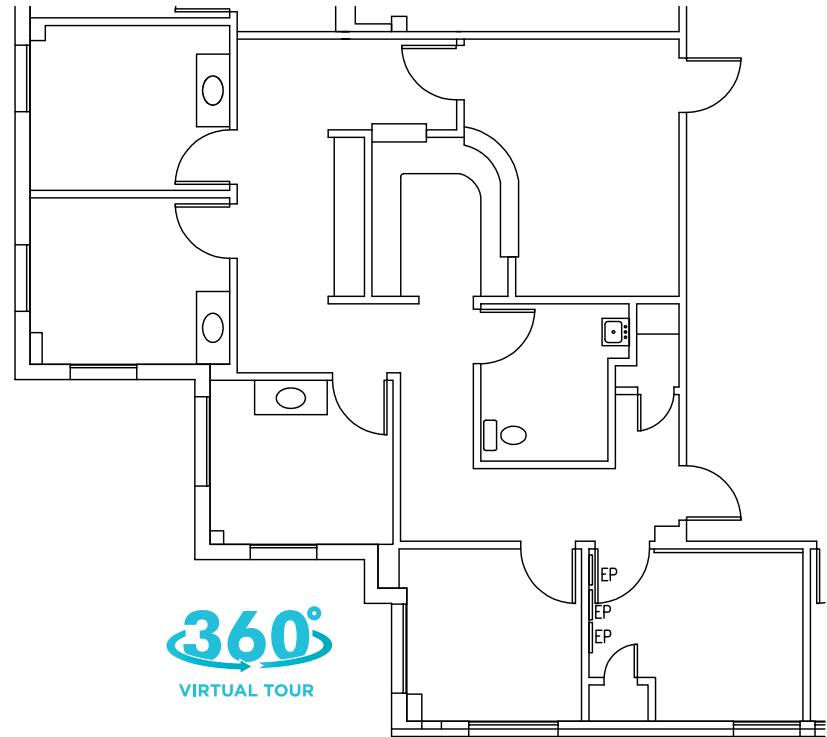
floor  
plans



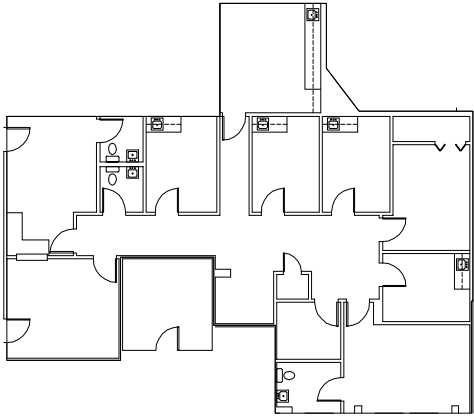
SUITE 106 - 2,334 SF



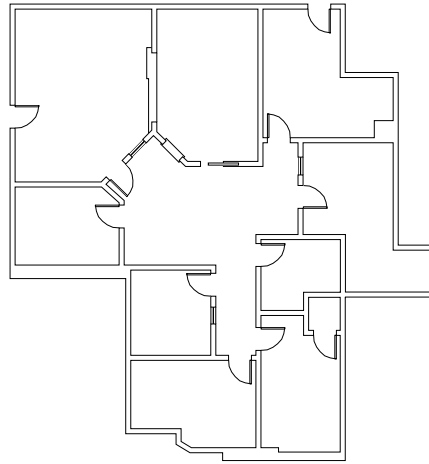
SUITE 214 - 1,333 SF



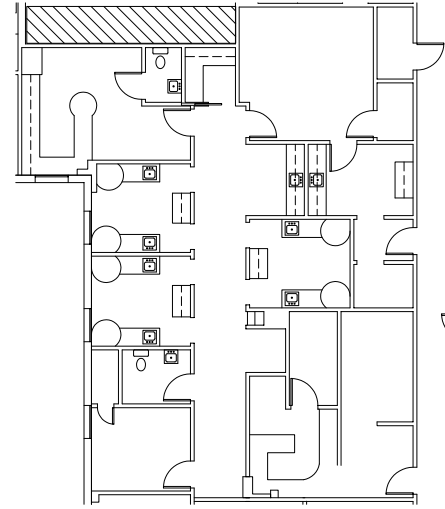
SUITE 201 - 2,331 SF



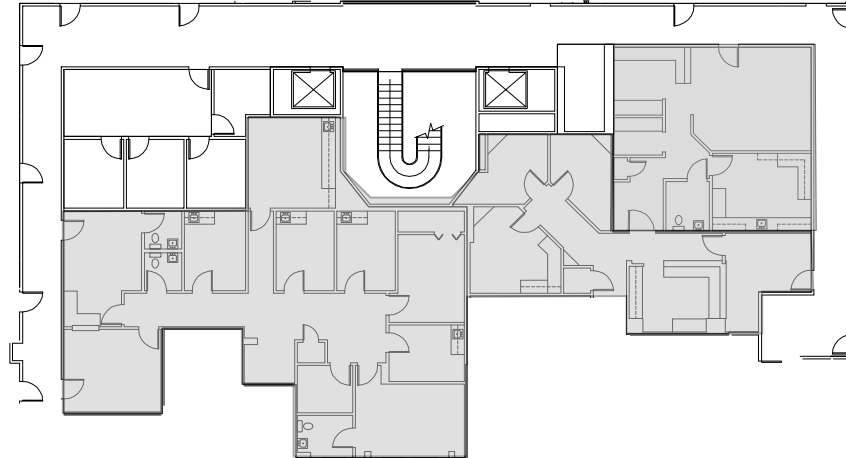
SUITE 218 - 1,990 SF



SUITE 212 - 2,456 SF



SUITES 201 & 218 COMBINED FOR 4,321 SF



floor plans



**FOR INFORMATION, CONTACT:**

**LARS EISENHAUER**

Vice President  
Lic. 01372911  
+1 760 438 8534  
lars.eisenhauer@cbre.com

**DAN HENRY**

Vice President  
Lic. 02035998  
+1 760 438 8569  
dan.henry@cbre.com



CBRE, INC Broker Lic. 00409987

