



South End Eats

500 W Summit Ave | Charlotte, NC, 28203

Available Ghost Kitchens

+/- 200-300 SF Suites

Property Overview

South End Eats Available Ghost Kitchens

The Nichols Company presents South End Eats, a unique private ghost kitchen opportunity in South End. Located in the center of delivery demand, these ghost kitchens by CloudKitchens provide a turnkey solution for restaurant owners to quickly and affordably expand their businesses. With easy accessibility located between both I-77 and I-277 to the surrounding Charlotte submarkets, this is ideal for startup concepts, personal chefs, catering companies, food trucks, single-location operators, and national chains looking to expand.

Property Details

Address 500 W Summit Ave | Charlotte, NC, 28203

Availability +/- 200 - 300 SF Suites Available

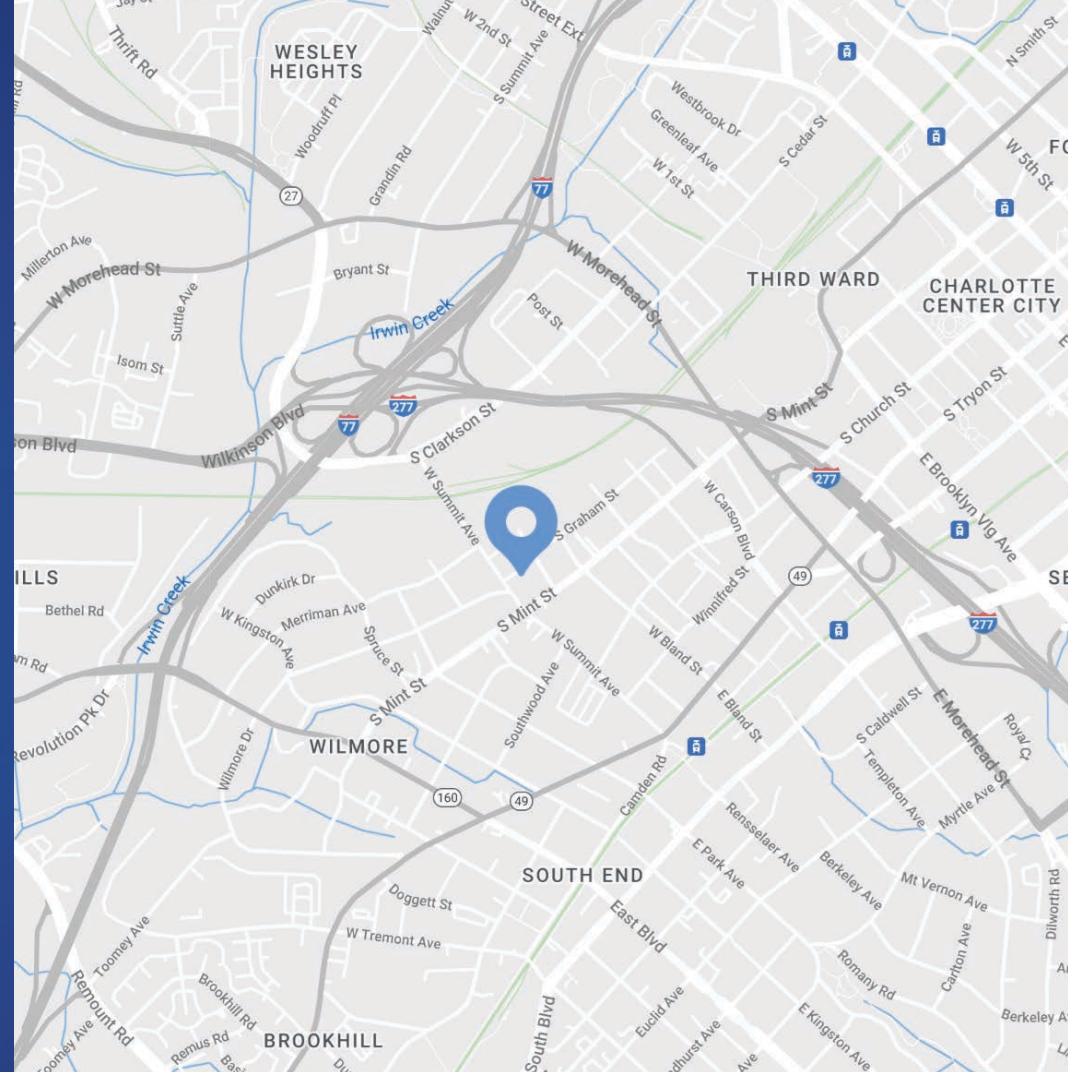
Use Retail

Parcel ID 07326211

Zoning TOD-UC

Pricing Call for Details

Additional Information Kitchen spaces include walk-in coolers with refrigerator, freezer, and dry storage as needed. Outdoor patio seating. Self processing.



Demographics

RADIUS	1 MILE	3 MILE	5 MILE
2024 Population	22,158	120,537	247,918
Avg. Household Income	\$147,553	\$133,935	\$125,865
Median Household Income	\$107,564	\$86,446	\$79,103
Households	14,009	62,484	118,017
Daytime Employees	42,978	164,615	276,321



SOUTH END EATS

South End Eats offers commercial ghost kitchens designed for speed, quality, and scale, making it easy to launch a delivery restaurant with lower risk and capital. Optimized for delivery food production, these kitchens require minimal staff and resources. Businesses can open a ghost kitchen in weeks, leveraging South End Eats proven model for efficient food processing and delivery. Located in densely populated areas, these spaces ensure accurate, timely orders and integrate all delivery apps on a single tablet. The model allows for multiple brands and cuisines, reducing overhead costs and increasing profits.



CloudKitchens®

CloudKitchen's commercial kitchens provide an efficient, and low-risk solution for launching delivery restaurants. Optimized for food production, these kitchens minimize staff needs and resources. Businesses can open a ghost kitchen in weeks using CloudKitchen's proven model. Located in high-demand areas, they ensure accurate, timely orders and integrate all delivery apps on a single tablet. This model allows for multiple brands and cuisines, reducing overhead and increasing profits. Ideal for both large and small businesses, CloudKitchen's shared spaces eliminate the need for dining rooms and front-of-house staff, offering commercial-grade equipment for busy restaurants to focus on food quality and safety.

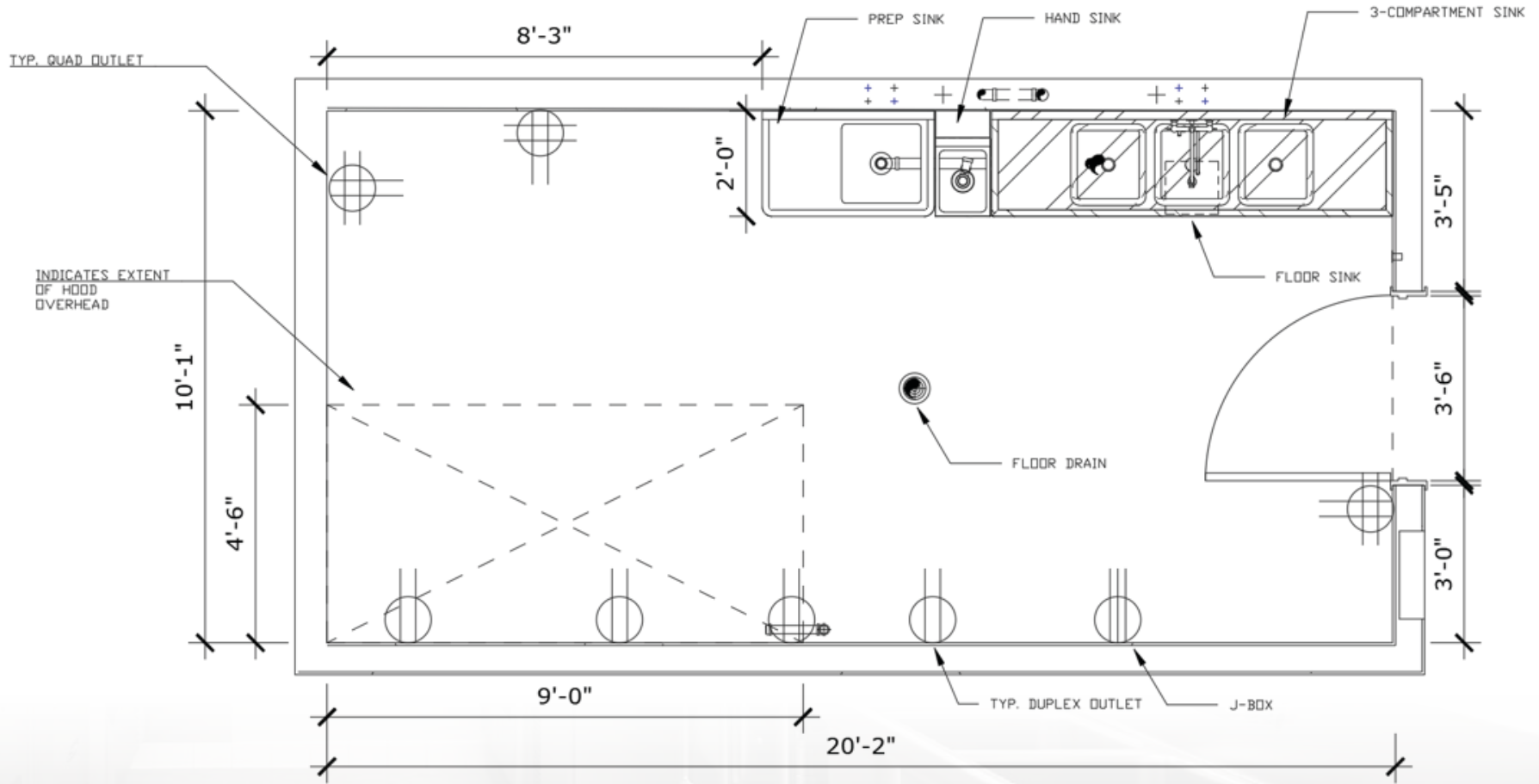


Virtual Tours

 Suite 7

 Suite 10

 Suite 17



South End

Charlotte, NC

Historic South End, often referred to as South End, is immediately south of Uptown Charlotte. It's where retro mixes with contemporary, historical bumps up against trendy, and art intersects commerce. Result: a pulsing, vibrant neighborhood in the city with meteoric growth. It doesn't hurt being close to Uptown, the airport, major highways, and smack dab on the LYNX Light Rail line. Boasting some of the city's most popular restaurants, bars, breweries and attractions, South End is the fastest growing neighborhood in Charlotte. South End recently landed new headquarter locations for nationally recognized brands such as Lowe's, Lending Tree and Dimensional Fund Advisors. With Charlotte consistently ranking at the top of lists such as "Millennial Moving Destinations", "Destinations for One-Way Moving" and "Fastest Growing Economies" the trend of strong population growth and rent growth are projected to continue.



South End Development Report



SOUTH END

\$3.4B

Commercial Development

371K SF

Retail Planned/Under Construction

2.2MM SF

Office Planned/Under Construction

3,802

Residential Units Planned/Under Construction

380

Hotel Rooms Planned/Under Construction



Market Overview





Contact for Details

Hannah Maeda

(704) 979 - 4207

hannah@thenicholscompany.com



Website

www.TheNicholsCompany.com

Phone

Office (704) 373-9797

Fax (704) 373-9798

Address

1204 Central Avenue, Suite 201

Charlotte, NC 28204

This information has been obtained from sources believed to be reliable. While we do not doubt its accuracy, we have not verified it and make no guarantee, warranty or representation to independently confirm its accuracy and completeness.