

# 1600 Washington Street, Vancouver WA 98660



**AUSTIN CAIN**

Vice President  
T +1 503 221 4833  
Austin.Cain@cbre.com

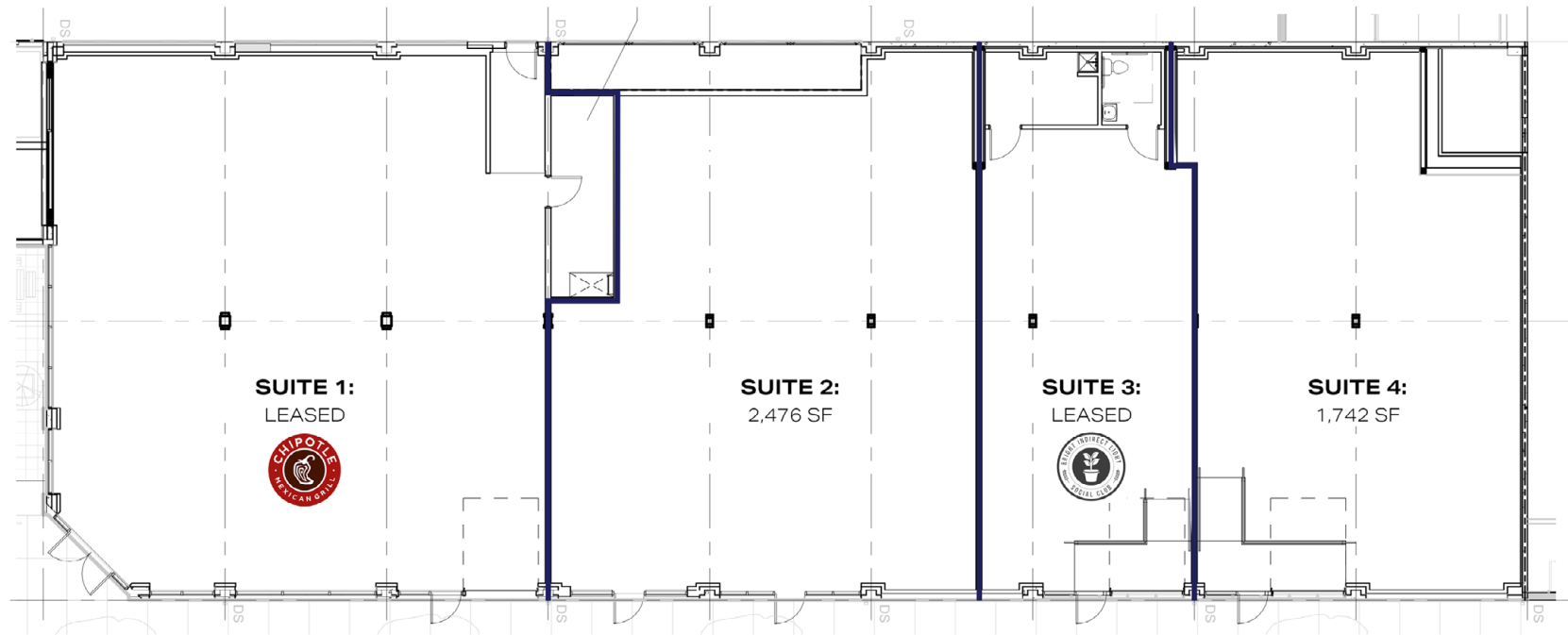


**TAKI CHALKIOPOULOS**

Associate  
T +1 503 221 4832  
Taki.Chalk@cbre.com



## Floor Plan



SUITE 1: LEASED

**SUITE 2: 2,476 SF**

SUITE 3: LEASED

**SUITE 4: 1,742 SF**

## Mixed Use Building

- Up to 2,476 sf ground floor retail available
- Brand new mixed-use building with 73 high-end apartments
- Across the street from New Seasons Grocer
- Deliverable now

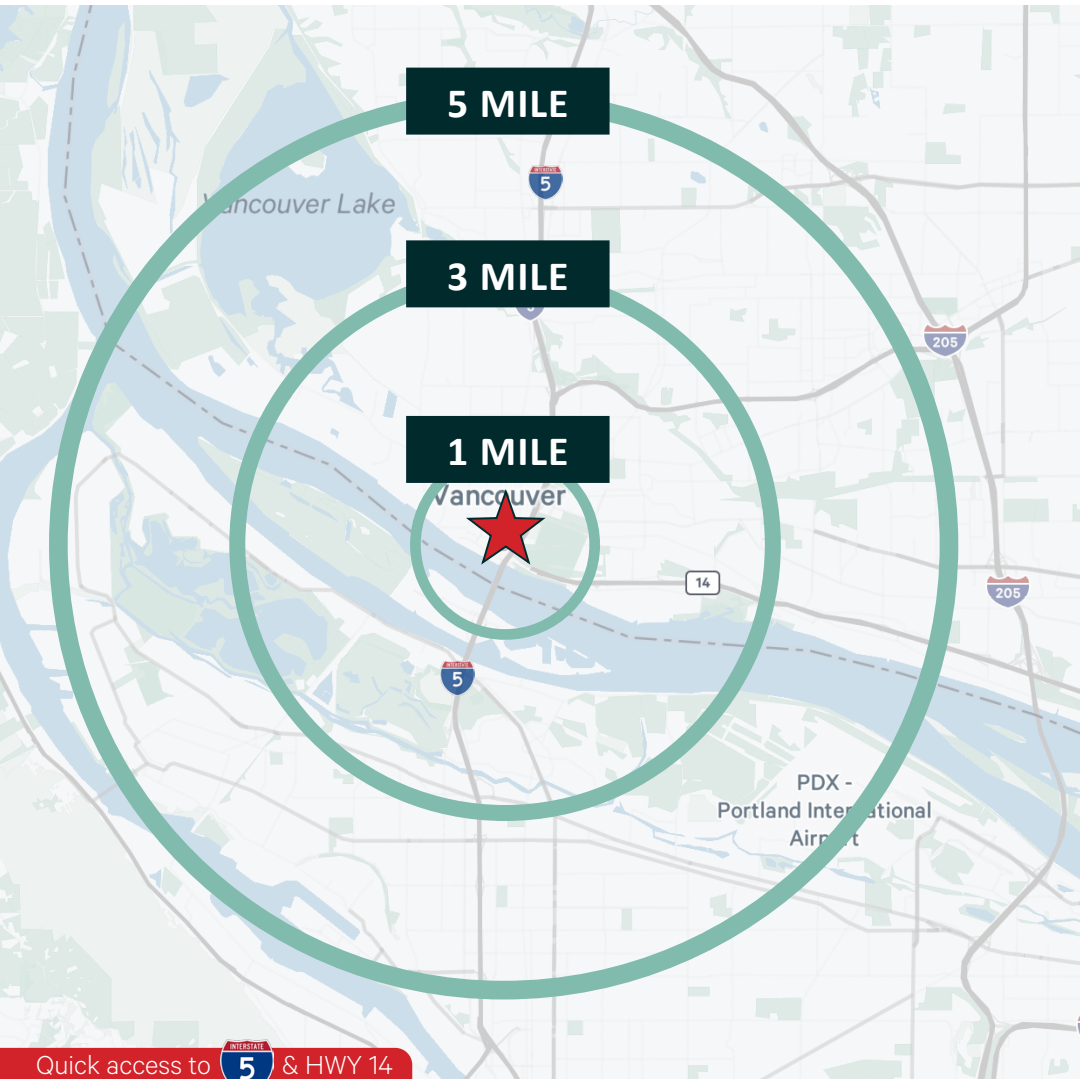
**CALL FOR  
LEASE RATE**



S.E. Corner



## Demographics & Points of Interest



### POPULATION

2023 Population - Current Year Estimate  
 2028 Population - Five Year Projection  
 2020 Population - Census  
 2010 Population - Census  
 2020-2023 Annual Population Growth Rate  
 2023-2028 Annual Population Growth Rate

1 MILE      3 MILES      5 MILES

|        |        |         |
|--------|--------|---------|
| 7,936  | 64,293 | 240,178 |
| 10,606 | 69,003 | 248,040 |
| 6,798  | 62,340 | 234,551 |
| 5,789  | 55,769 | 208,038 |
| 4.88%  | 0.95%  | 0.73%   |
| 5.97%  | 1.42%  | 0.65%   |

### HOUSEHOLDS

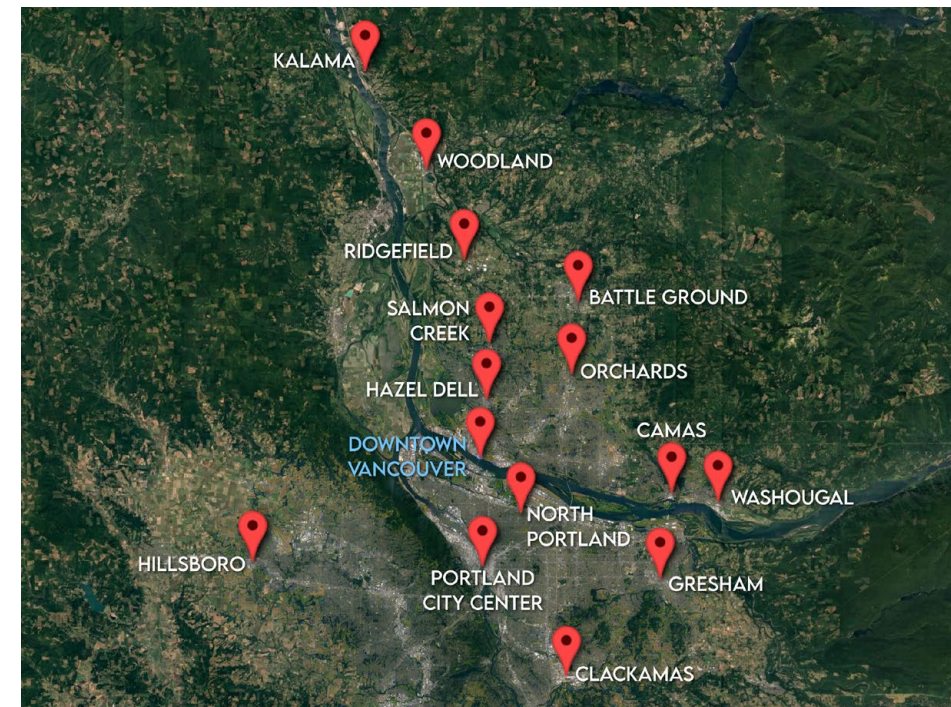
2023 Households - Current Year Estimate  
 2028 Households - Five Year Projection  
 2010 Households - Census  
 2020 Households - Census  
 2020-2023 Compound Annual Household Growth Rate  
 2023-2028 Annual Household Growth Rate  
 2023 Average Household Size

|       |        |         |
|-------|--------|---------|
| 4,327 | 28,656 | 100,328 |
| 6,276 | 31,706 | 104,941 |
| 2,680 | 23,977 | 84,949  |
| 3,559 | 27,377 | 97,088  |
| 89.5% | 93.4%  | 94.4%   |
| 6.20% | 1.41%  | 1.02%   |
| 7.72% | 2.04%  | 0.90%   |
| 1.70  | 2.19   | 2.34    |

### HOUSEHOLD INCOME

2023 Average Household Income  
 2028 Average Household Income  
 2023 Median Household Income  
 2028 Median Household Income  
 2023 Per Capita Income  
 2028 Per Capita Income

|          |           |           |
|----------|-----------|-----------|
| \$80,194 | \$93,102  | \$103,764 |
| \$97,714 | \$109,374 | \$121,023 |
| \$42,943 | \$66,260  | \$77,049  |
| \$56,198 | \$78,292  | \$88,734  |
| \$45,064 | \$41,206  | \$43,401  |
| \$58,848 | \$49,881  | \$51,251  |



**AUSTIN CAIN**

Vice President  
 T +1 503 221 4833  
 Austin.Cain@cbre.com



**TAKI CHALKIOPOULOS**

Associate  
 T +1 503 221 4832  
 Taki.Chalk@cbre.com

# Navalia | Retail/Office Spaces For Lease

Up to 2,476 SF Ground Floor Retail Available

## Contact Us



**AUSTIN CAIN**  
Vice President  
T +1 503 221 4833  
Austin.Cain@cbre.com



**TAKI CHALKIOPOULOS**  
Associate  
T +1 503 221 4832  
Taki.Chalk@cbre.com



© 2024 CBRE, Inc. All rights reserved. This information has been obtained from sources believed reliable, but has not been verified for accuracy or completeness. You should conduct a careful, independent investigation of the property and verify all information. Any reliance on this information is solely at your own risk. CBRE and the CBRE logo are service marks of CBRE, Inc. All other marks displayed on this document are the property of their respective owners, and the use of such logos does not imply any affiliation with or endorsement of CBRE. Photos herein are the property of their respective owners. Use of these images without the express written consent of the owner is prohibited.

1600 Washington Street, Vancouver WA 98660

CBRE, INC | 1300 SW 5TH AVENUE #3500 | PORTLAND, OR 97201

