

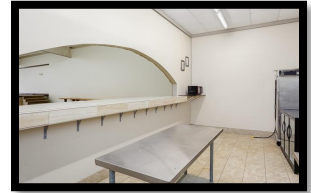
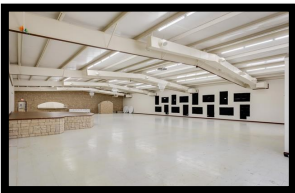
FOR SALE OR LEASE

1814 GEORGE WALLACE HWY—RUSSELVILLE, AL



FOR SALE 1918 GEORGE WASHINGTON PARKWAY

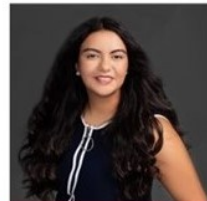
Commercial Building, A spacious property with 8190 sq ft that offers tremendous potential with restrooms, a private room, a small kitchen and plenty of parking and great access from Hwy 43. This building is currently used as a popular venue in town but it can be transformed to suit a variety of different needs such as a daycare, heated storage unit, office space, retail outlet, fitness center, or a medical center. The versatility of this space opens doors to various business ventures, allowing it to transform it to your specific needs. Don't miss out on this opportunity to create the ideal space for your business or investment.



SHANE ODOM
256.214.2196
shane@marmac.us
marmaccommercial.com



MARK MIZELL
256.214.2227
mark.mizell@marmac.us
marmaccommercial.com



DIXIE CHAVEZ
256-668-7250
Dixie.chaves@marmac.us
marmaccommercial.com



**SERVING YOUR COMMERCIAL
REAL ESTATE NEEDS**

<https://www.marmaccommercial.com/>

256-214-2196

256-214-2227