

ENGEL & VÖLKERS[®]



700-702 SW Ramsey Avenue • Grants Pass, Oregon
Medical offices for lease

Doctors Court Building • 700-702 SW Ramsey Avenue • Grants Pass, Oregon 97527

Suite # 112 - 7,650 SF
Suite # 120 - 3,150 SF
Suite # 224 - 3,600 SF

Asking Rate: \$2 PSF / NNN
Term: Negotiable



Strategic location in a grouping of medical properties including Asante Three Rivers Medical Center, 125 bed hospital

High parking ratio of 5 stalls per 1,000 square feet

10 minutes from Interstate 5 • Half mile from U.S. Highway 199 • Adjacent to regional shopping center

Regional hub of medical care for Southern Oregon and Northern California



SUITE 112
7650 USEABLE SQ. FT.

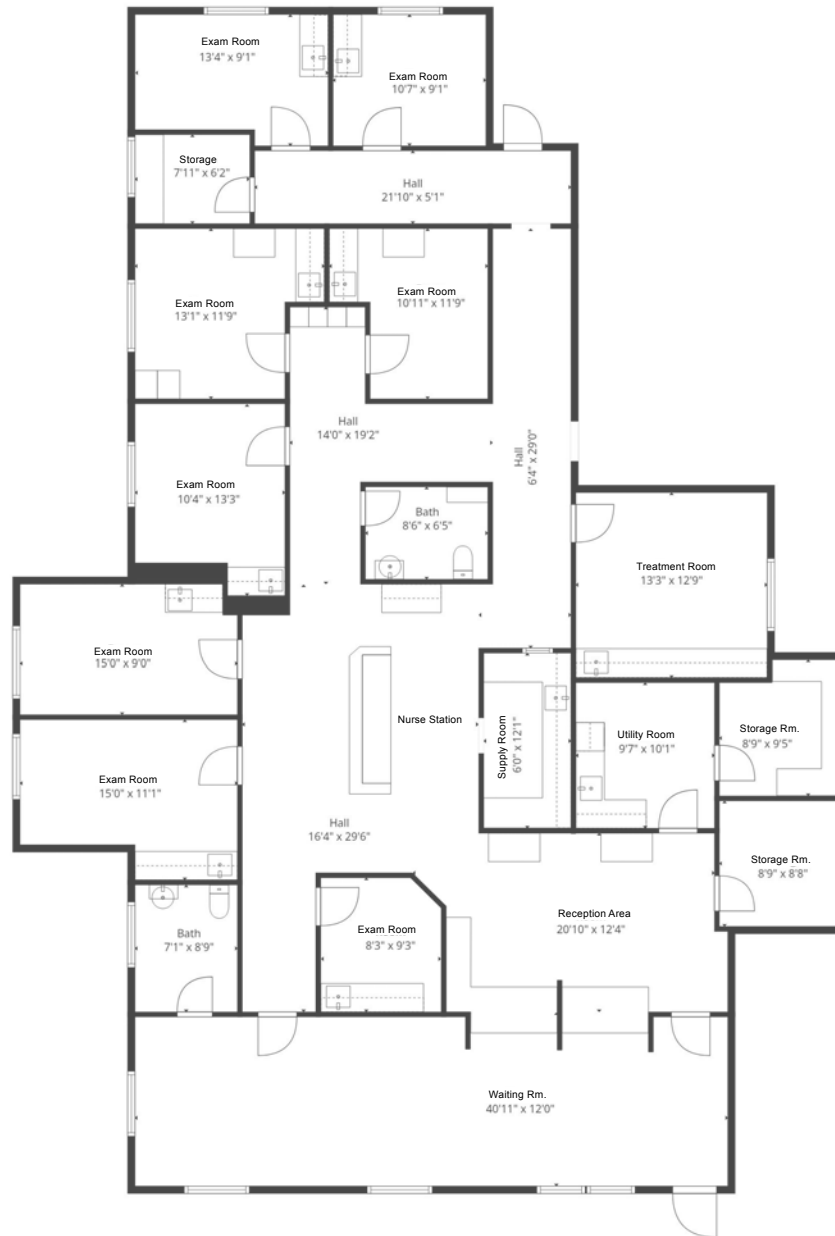
WAITING ROOM - NATURAL LIGHT & FIREPLACE.
FULLY BUILT OUT MEDICAL SUITE.
12 EXAM ROOMS WITH SINKS.
LARGE TREATMENT ROOM.
CENTRAL NURSE AREA.
IDEAL FOR MEDICAL OR DENTAL & CAN BE
RECONFIGURED AS NEEDED.



SUITE 112 • MEDICAL CLINIC

SUITE 120
3150 USEABLE SQ. FT.
ABLE TO BE CONNECTED TO SUITE 112

WAITING ROOM - NATURAL LIGHT
FULLY BUILT OUT MEDICAL SUITE.
8 EXAM ROOMS WITH SINKS.
LARGE TREATMENT ROOM.
CENTRAL NURSE AREA.
IDEAL FOR MEDICAL OR DENTAL & CAN BE
RECONFIGURED AS NEEDED.



SUITE 224
3600 USEABLE SQ. FT.

FULLY BUILT OUT DENTAL SUITE.
FULLY EQUIPPED & MOVE-IN READY.
WAITING ROOM - NATURAL LIGHT & FIREPLACE
8 TREATMENT ROOMS WITH SINKS.
LAB & OFFICE SPACE.
IDEAL FOR A DENTAL PRACTICE, CAN BE
RECONFIGURED AS NEEDED OR MODIFIED
FOR A MEDICAL CLINIC.





SUITE 224 • DENTAL CLINIC



**Dutch Bros.
Soccer Complex**

**Asante Three Rivers
Medical Center**

**Grants Pass
Family YMCA**

**Enterprise
Car Rental**

Interpath Lab

**Doctors Court
Building
700 SW Ramsey**

Siskiyou Pediatric

**Therapeutic Associates
Physical Therapy**



RICHARD RAMER • **ENGEL & VÖLKERS WEST PORTLAND**
4847 Meadows Rd #151 | Lake Oswego | OR 97035
M 310•720•2994 | O 503•303•5917
richard.ramer@evrealestate.com | richard.ramer@engelvoelkers.com

