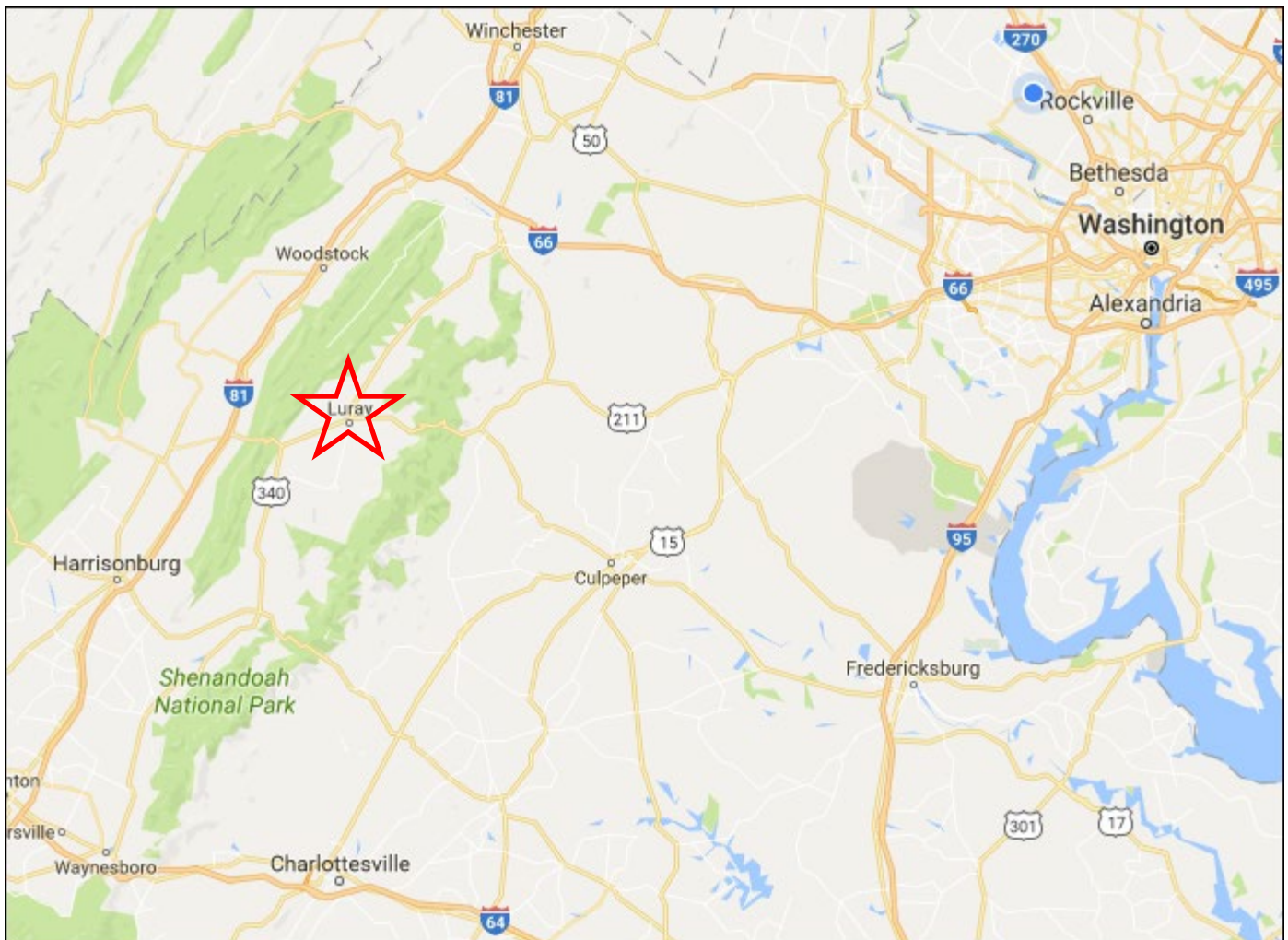


Development Site for Sale Shenandoah Valley, Page County, Town of Luray, Virginia

- 4.8 acres – \$595,000
- Zoned B-1 Business – Townhouses allowed via Special Use Permit
- Located at corner of Memorial Drive & W. Main Street
- Comcast high-speed internet service available at street
- In front of Valley Health / Page Memorial Hospital
- Adjacent to historic [Mimslyn Inn](#)
- One mile from [Luray Caverns](#) which gets 500,000 visitors annually

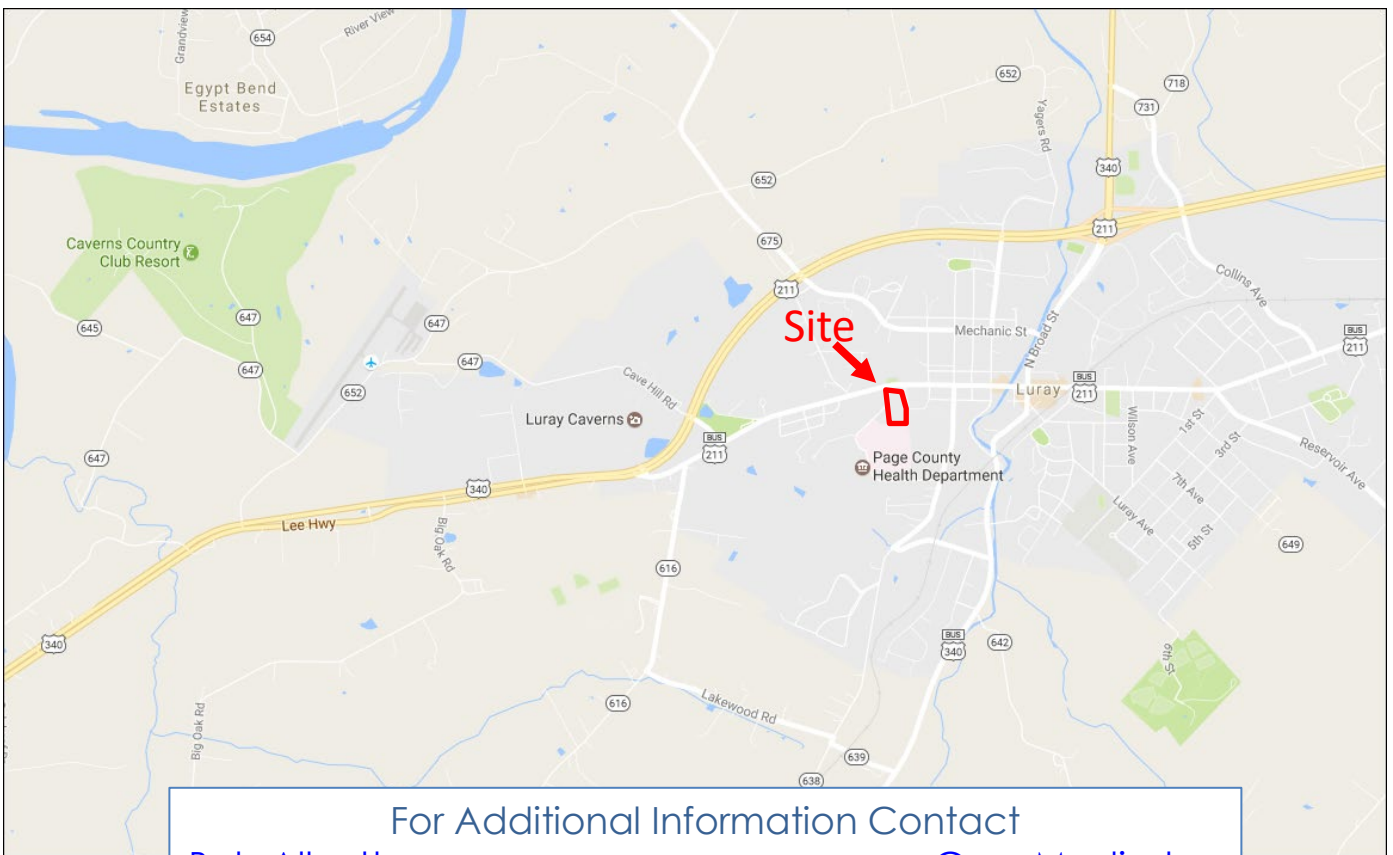


For Additional Information Contact

[Bob Allnutt](#)
(301) 571-8202

[Gary Modjeska](#)
(301) 571-8203

Luray Development Site

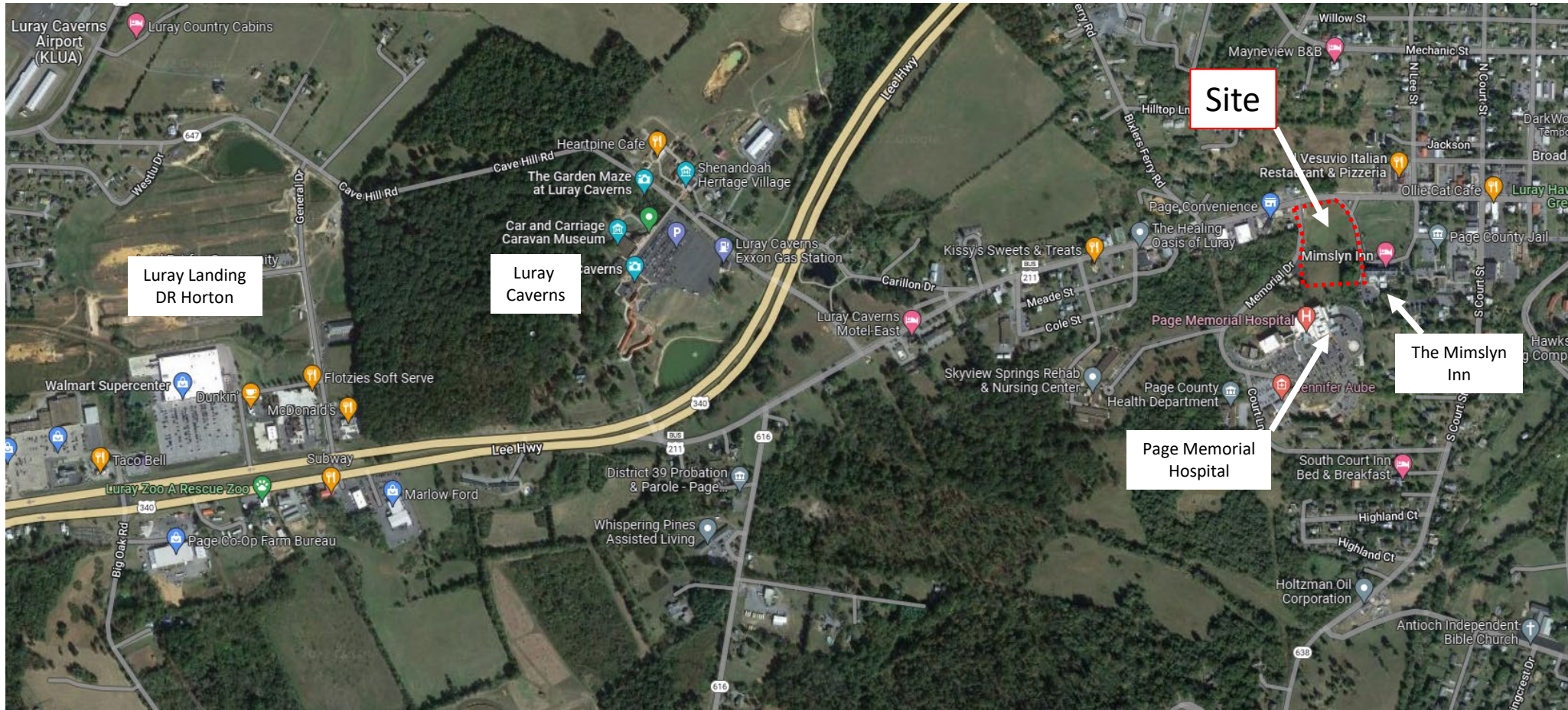


For Additional Information Contact

Bob Allnutt (301) 571-8202	Gary Modjeska (301) 571-8203
--	--

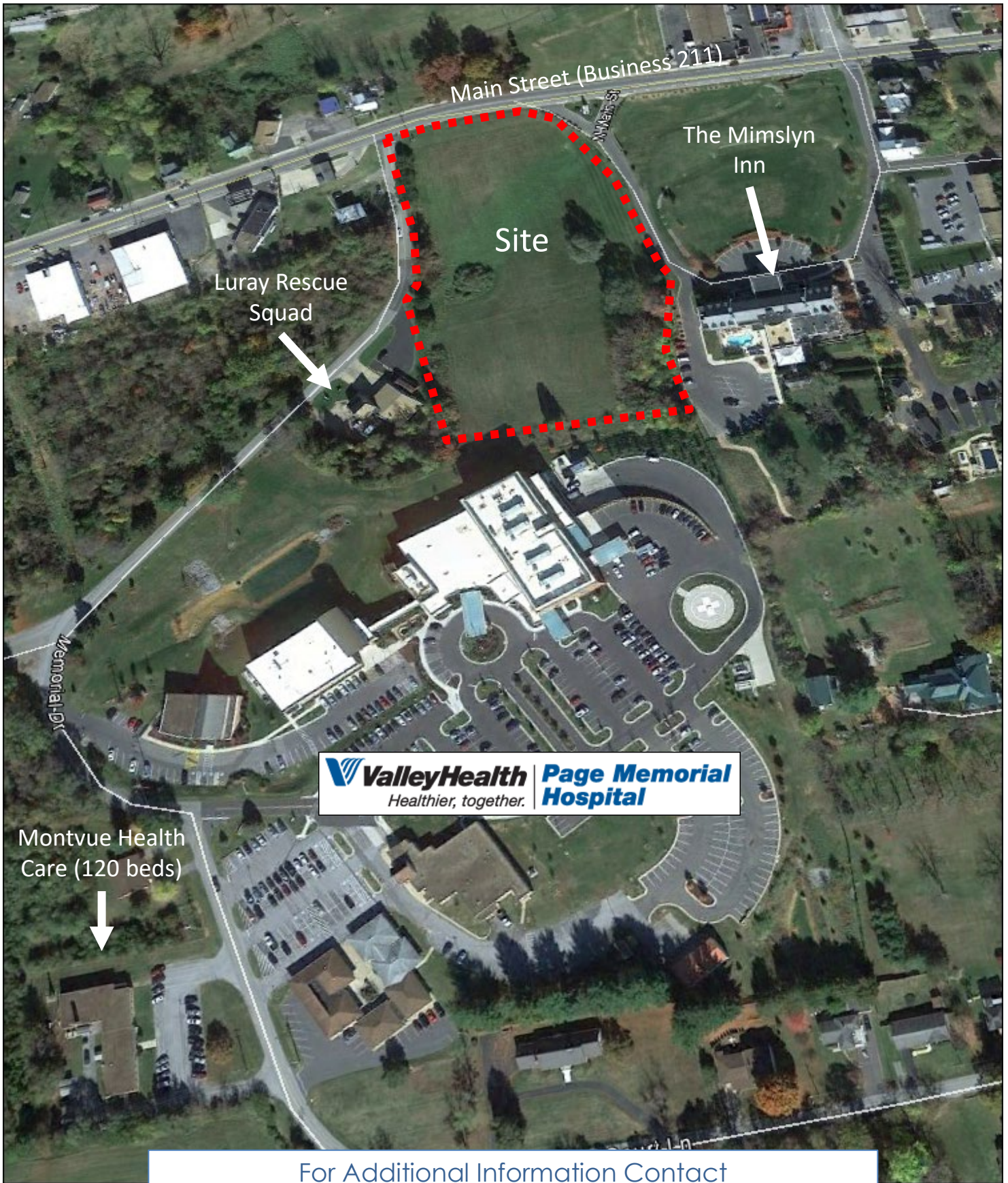
Luray Development Site

W. Main Street & Memorial Drive



For Additional Information Contact

Bob Allnutt (301) 571-8202	Gary Modjeska (301) 571-8203
---	---



For Additional Information Contact

Bob Allnutt (301) 571-8202	Gary Modjeska (301) 571-8203
---	---

Luray Development Site



For Additional Information Contact

Bob Allnutt	Gary Modjeska
(301) 571-8202	(301) 571-8203

