



110 S
FAIRFAX AVE

•
LOS ANGELES, CA 90036



FOR LEASE

AVAILABLE NOW
AT NORTH MARKET

FOR INQUIRIES:

PATRICK AMOS
SENIOR VICE PRESIDENT
+1 310 550 2594
patrick.amos@cbre.com
Lic. 01886581

DYLAN HANSETH
SENIOR ASSOCIATE
+1 310 550 2578
dylan.hanseth@cbre.com
Lic. 01965770

AVERY KAY
CLIENT SERVICES COORDINATOR
+1 858 999 4241
avery.kay@cbre.com
Lic. 02155758

CBRE



CBS STUDIOS

NORTH MARKET
110 S FAIRFAX AVE



North Market offers exceptional creative office space in the heart of LA's vibrant Mid-City neighborhood. Located on the Original Farmers Market campus, adjacent to The Grove, North Market has an unmatched amenity base with 125+ on-site dining and retail merchants. The building features exposed ceilings, concrete floors, operable windows, ample natural light and new restrooms. Select suites feature skylights and private balconies.

Developed, owned and operated by the A.F. Gilmore Company, North Market has the highest quality of ownership and management, both of which are located on site.

+ Second Floor | West

– Suite 230W – 2,849 SF: Available now – Creative built-out space.

+ Third Floor | West

– Suite 330W – 2,470 SF: Available now – Spec Suite.

– Suite 340W – 7,780 SF: Available now – Spec Suite.

– Suites 330W + 340W: 10,250 SF

+ Third Floor | East

– Suite 300E – 5,638 SF: Planned – Spec Suite; Shell condition.

– Suite 350E – 2,819 SF: Planned – Spec Suite; Shell condition.

– Suite 360E – 4,356 SF: Planned – Spec Suite; Shell condition.

– Suite 370E – 2,563 SF: Planned – Spec Suite; Shell condition.

– Suites 300E + 350E + 360E + 370E: 15,376 SF

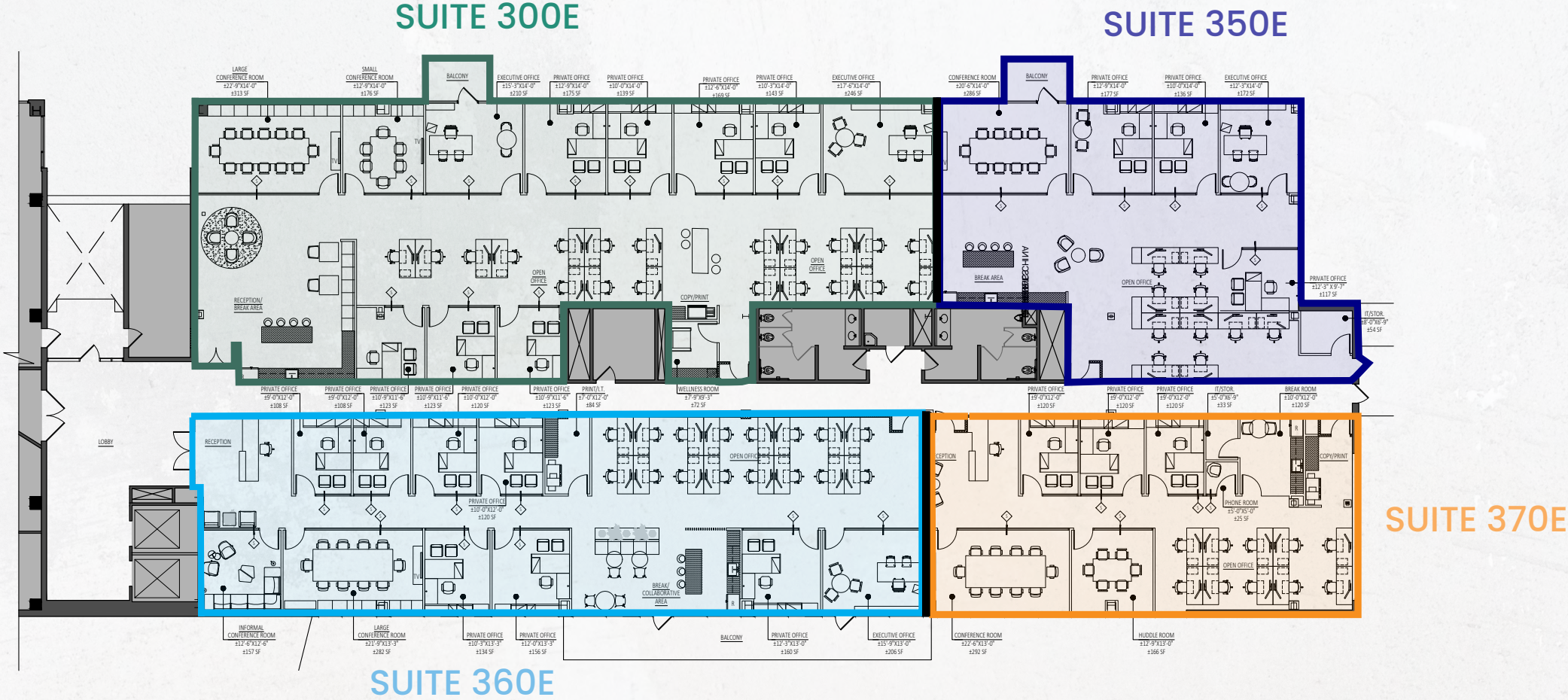
+ Total Available: 28,475 SF

+ Term | Negotiable

+ Parking | 3.0 per 1,000 RSF @ \$220 / Space / Month

3RD FLOOR | EAST

PLANNED SPEC SUITES
SUITE 300E - 5,638 SF
SUITE 350E - 2,819 SF
SUITE 360E - 4,356 SF
SUITE 370E - 2,563 SF
TOTAL - 15,376 SF



3RD FLOOR | WEST

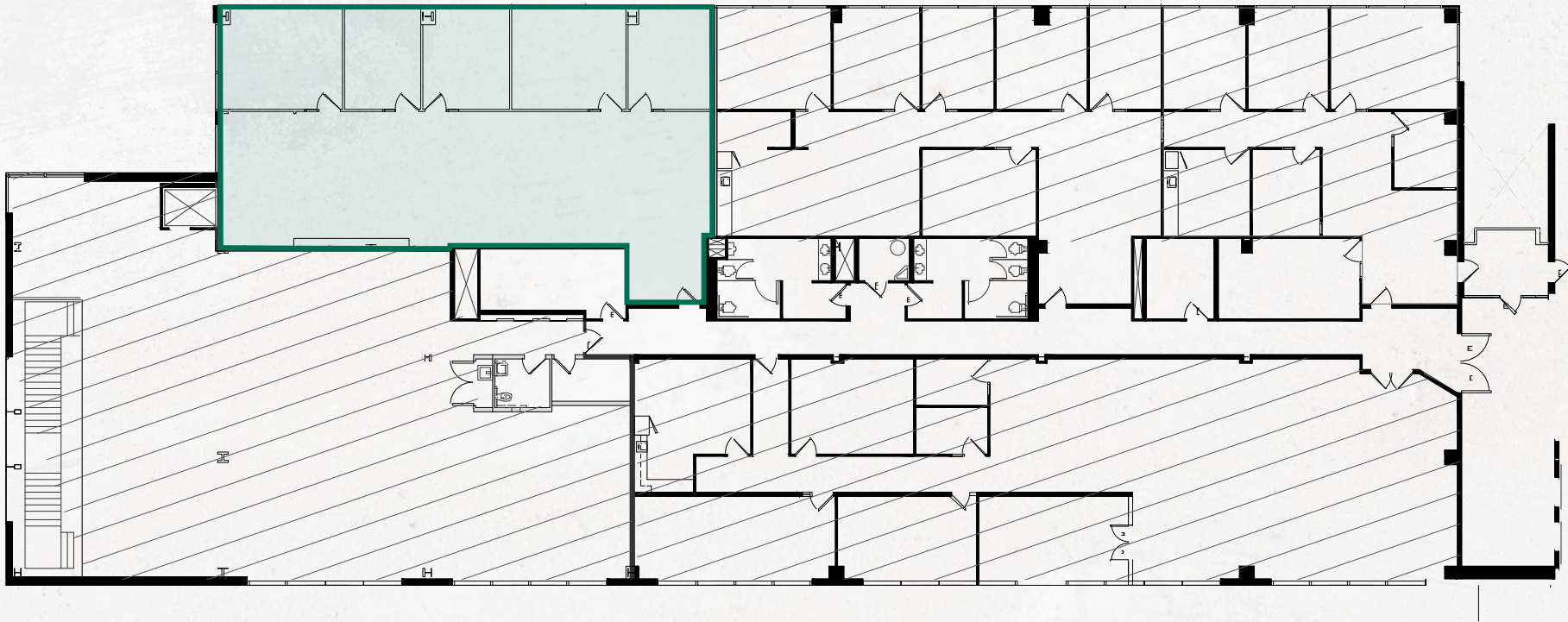
SPEC SUITES AVAILABLE NOW
SUITE 330W - 2,470 SF
SUITE 340W - 7,780 SF
TOTAL - 10,250 SF



2ND FLOOR | WEST

CREATIVE BUILT-OUT SPACE
SUITE 230W - 2,849 SF
TOTAL - 2,849 SF

SUITE 230W



NEWLY COMPLETED SPEC SUITES





BEVERLY CONNECTION

CVS pharmacy

NORDSTROM

OFF 5TH

TARGET

OLD NAVY

corner bakery

BAJA FRESH

Jamba



The Ponte Ristorante



resource



GOLF



GARDE



BEVERLY BLVD



Marvin

Swingers

Araya's Vegetarian Place



NORTH MARKET
110 S FAIRFAX AVE



I.a. Eyeworks



LE LABO GRASSE - NEW YORK

MAGNOLIA BAKERY

drybar



TOAST

CLEAN YOUR DIRTY FACE.

The Sill



sweetgreen

BELCAMPO MEAT CO.

Sweetfin

VERVE

FARMER'S DAUGHTER HOTEL

TRADER JOE'S



MENDOCINO FARMS sandwich market

mercado

CVS



Robata JINYA West Hollywood



the little door

SLAB



ANINE BING

Samy's Camera



Hyperslow Cafe

Pho Saigon Pearl

BEVERLY GROVE

- LA Paella -

Goal Sports Bar

M Cohen

Aēsop



WILLIAM B + friends

FÄCE HAUS

JOAN'S ON THIRD

3RD ST

The IZAKA-YA



SAN VICENTE BLVD



La Cienega Park

WILSHIRE/LA CIENEGASTATION



Coral Fish Poke Shop



KAZU NORI

Molly Malone's Irish Pub

UOVO



Bernie's Coffee Shop & Restaurant

LYTE

TRIMANA



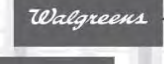
FAIRFAX AVE



WILSHIRE/FAIRFAX STATION



Black Dog Coffee



Smart & Final



Office DEPOT



MIRACLE MILE

Maravilla Latin Cuisine



WHICH WHICH SUPERIOR SANDWICHES



Ono Hawaiian Bbq

110 S FAIRFAX AVE

•
LOS ANGELES, CA

AVAILABLE NOW FOR LEASE

FOR INQUIRIES:

PATRICK AMOS

SENIOR VICE PRESIDENT

+1 310 550 2594

patrick.amos@cbre.com

Lic. 01886581

DYLAN HANSETH

SENIOR ASSOCIATE

+1 310 550 2578

dylan.hanseth@cbre.com

Lic. 01965770

AVERY KAY

CLIENT SERVICES COORDINATOR

+1 858 999 4241

avery.kay@cbre.com

Lic. 02155758

© 2025 CBRE, Inc. All rights reserved. This information has been obtained from sources believed reliable, but has not been verified for accuracy or completeness. Any projections, opinions, or estimates are subject to uncertainty. The information may not represent the current or future performance of the property. You and your advisors should conduct a careful, independent investigation of the property and verify all information. Any reliance on this information is solely at your own risk. CBRE and the CBRE logo are service marks of CBRE, Inc. and/or its affiliated or related companies in the United States and other countries. All other marks displayed on this document are the property of their respective owners.




The Original
FARMERS MARKET®
Since 1934