



110 MARYLAND AVE, NE STOUT&TEAGUE



Mollye Wheeler, Director of Leasing  
[mwheeler@stoutandteague.com](mailto:mwheeler@stoutandteague.com) | 202.328.5136

STOUT & TEAGUE | 8001 Forbes Place, Ste 305, Springfield, VA 22151





Erected in 1923 the United Methodist Building has been a center for Methodist social witness on Capitol Hill for over one hundred years.

The United Methodist Building is the only non-government building on Capitol Hill. It houses the Washington offices of a number of ecumenical groups as well as the offices of the United Methodist Council of Bishops, United Methodist Women, and the United Methodist Commission on Religion and Race.

At the 2016 General Conference, the United Methodist Building became a Heritage Landmark of United Methodism – one of about 50 landmarks around the world.

## FEATURES

- Efficient office suites with private restrooms
- Multiple conference facilities
- Fitness center
- Chapel with weekly services
- Controlled access and reception desk
- Storage in varying sizes
- Limited garage parking
- Short distance to Metro
- Green roof
- Flexible lease terms

## LOCATION

### COMMUTER RAILS

Capitol South Station	(0.4mi)
Union Station	(0.6mi)

### AIRPORTS

Ronald Reagan National	(4.7mi)
Washington Dulles	(29.1mi)



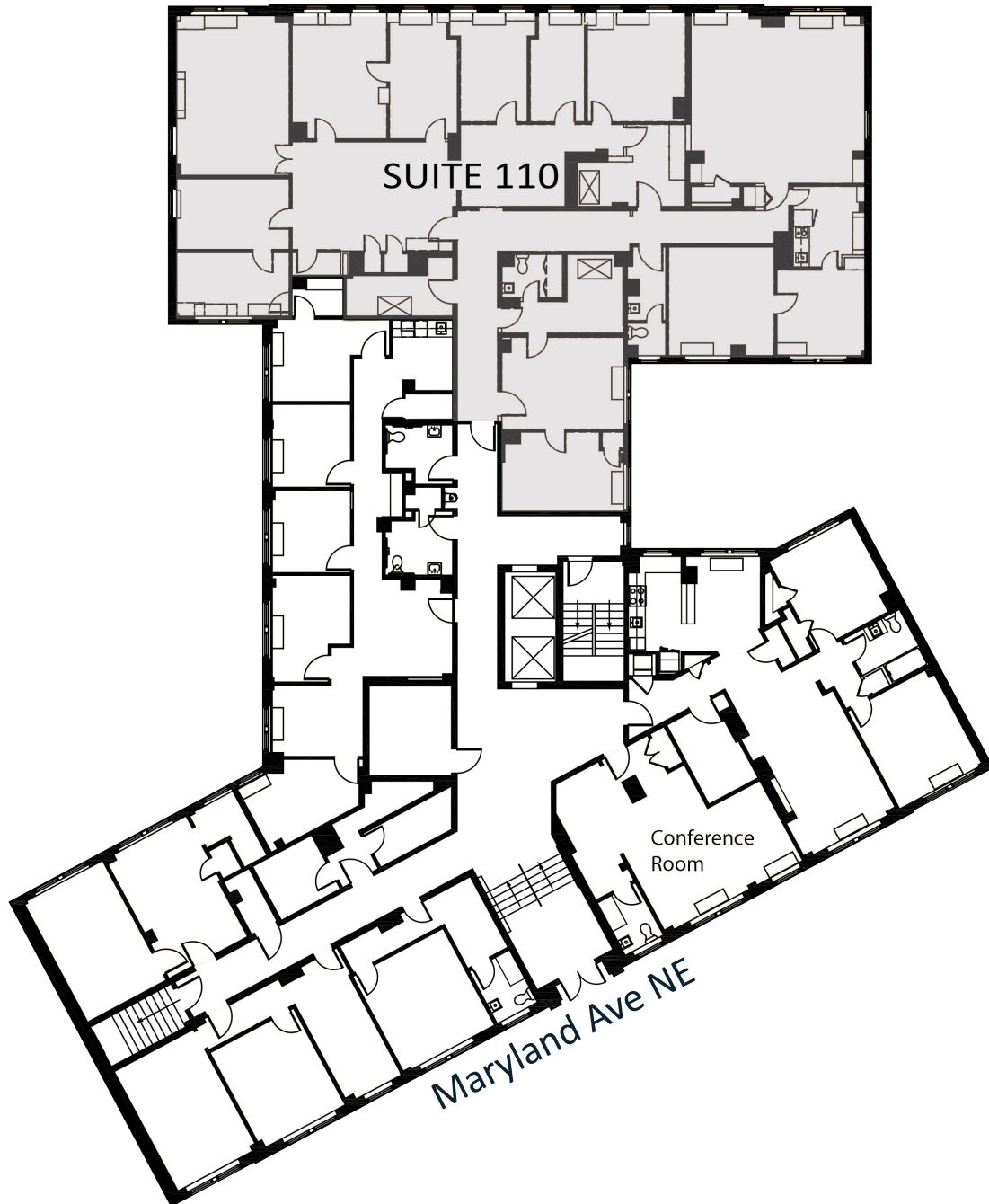
110 Maryland Ave NE

STOUT&TEAGUE

## SUITE 110 3,252 RSF

1st Floor | 3,252 RSF | Vacant | \$48.50/ PSF

- Largest office space in the building
- 1st floor location
- Spacious reception area
- Large windowed conference room
- Up to 12 individual private offices
- Open work area, pantry, private bath and storage



## SUITE 112 580 RSF

1st Floor | 580 RSF | Available 8/1/25 | \$48.50/ PSF

- Efficient 1st floor corner office space
- Two partitioned large offices/conference rooms
- Private restroom
- Storage/coat closet
- Available for occupancy beginning in August 2025



110 Maryland Ave NE

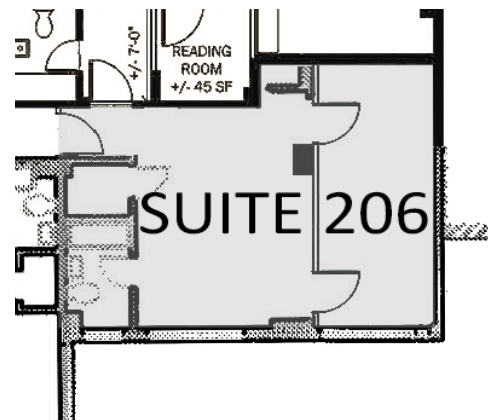
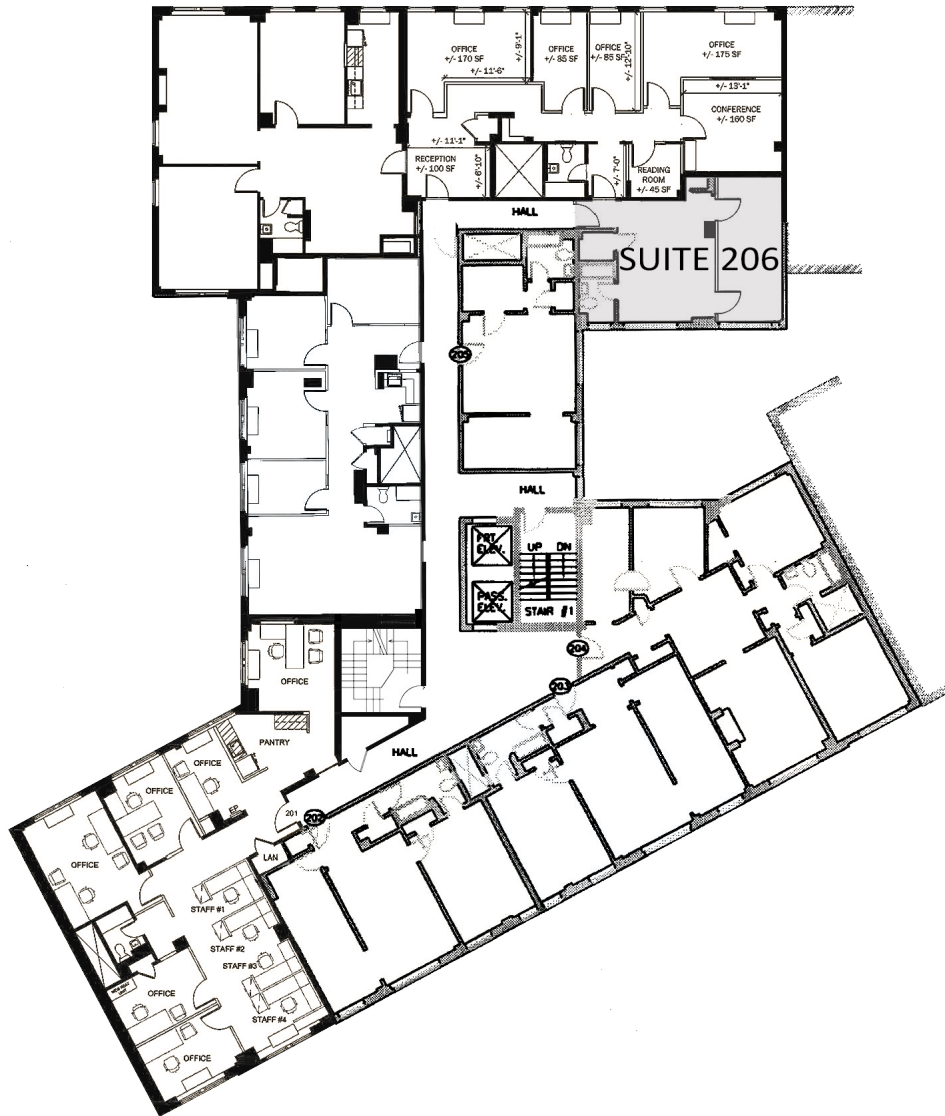
STOUT&TEAGUE



# SUITE 206 556 RSF

2nd Floor | 556 RSF | Vacant | Asking \$48.50/ PSF

- Efficient second floor corner office space
- Mostly open plan
- Storage closet
- Private restroom



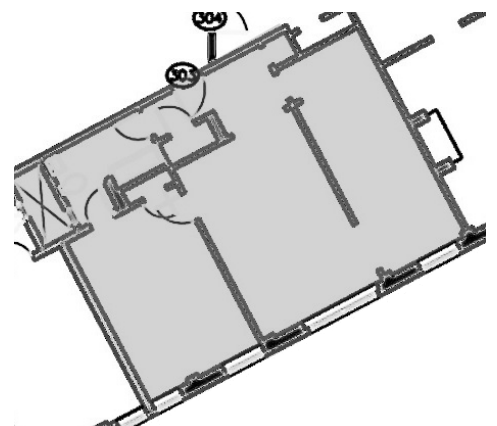
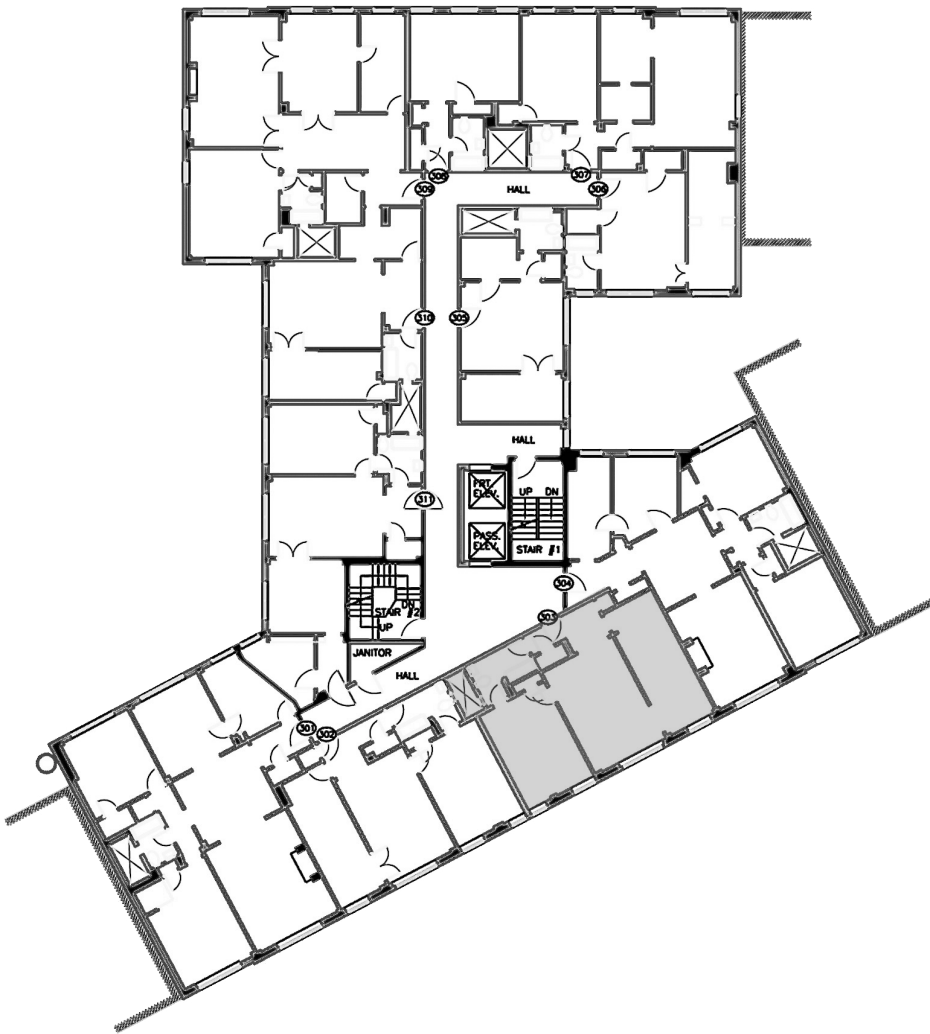
110 Maryland Ave NE

STOUT&TEAGUE

## SUITE 303 829 RSF

3rd Floor | 829 RSF | Vacant | \$48.50/ PSF

- Great 3rd floor office suite
- Direct elevator exposure
- Windowline overlooks Maryland Avenue and the Supreme Court
- Open area
- Private offices
- Conference room
- Private restroom
- Closet

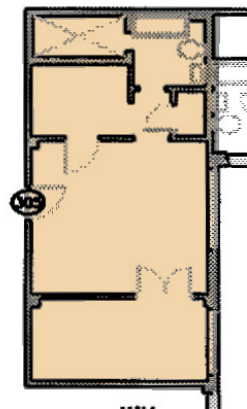
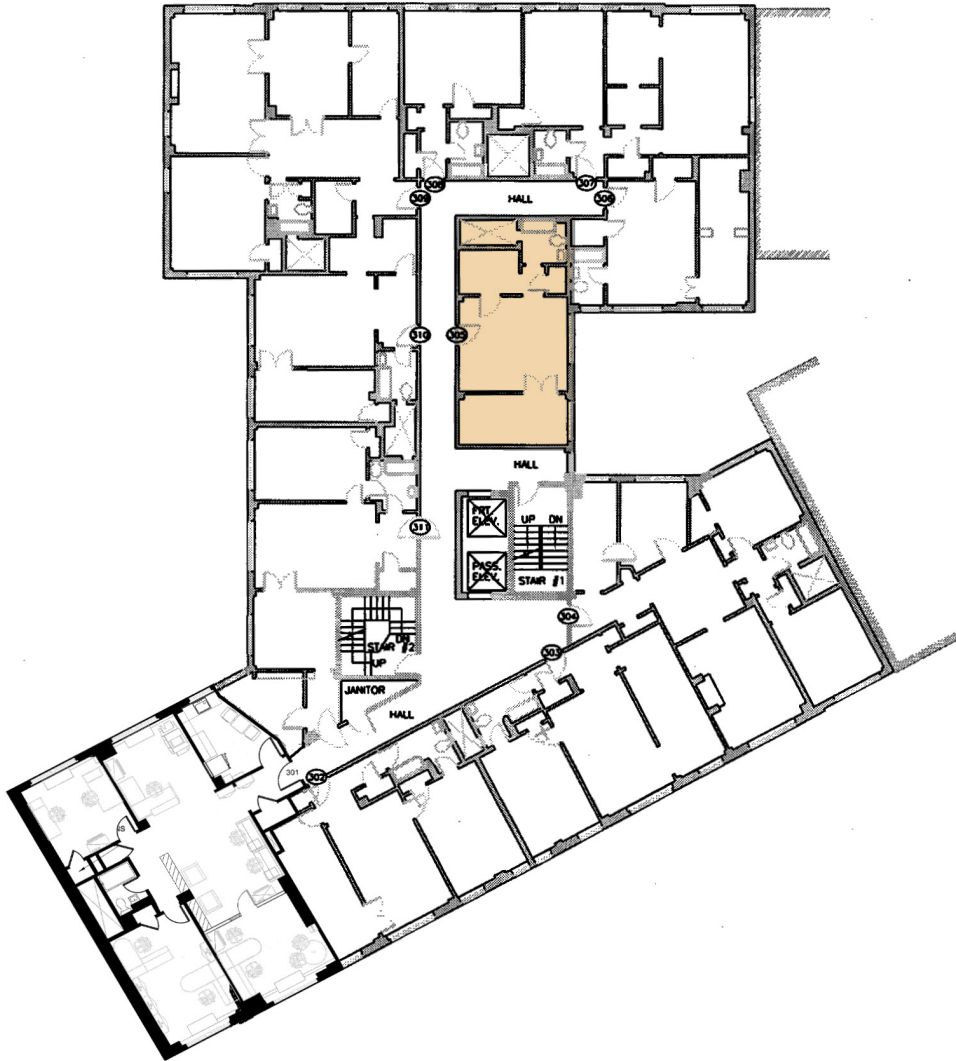




## SUITE 305 567 RSF

3rd Floor | 567 RSF | Vacant | \$48.50/ PSF

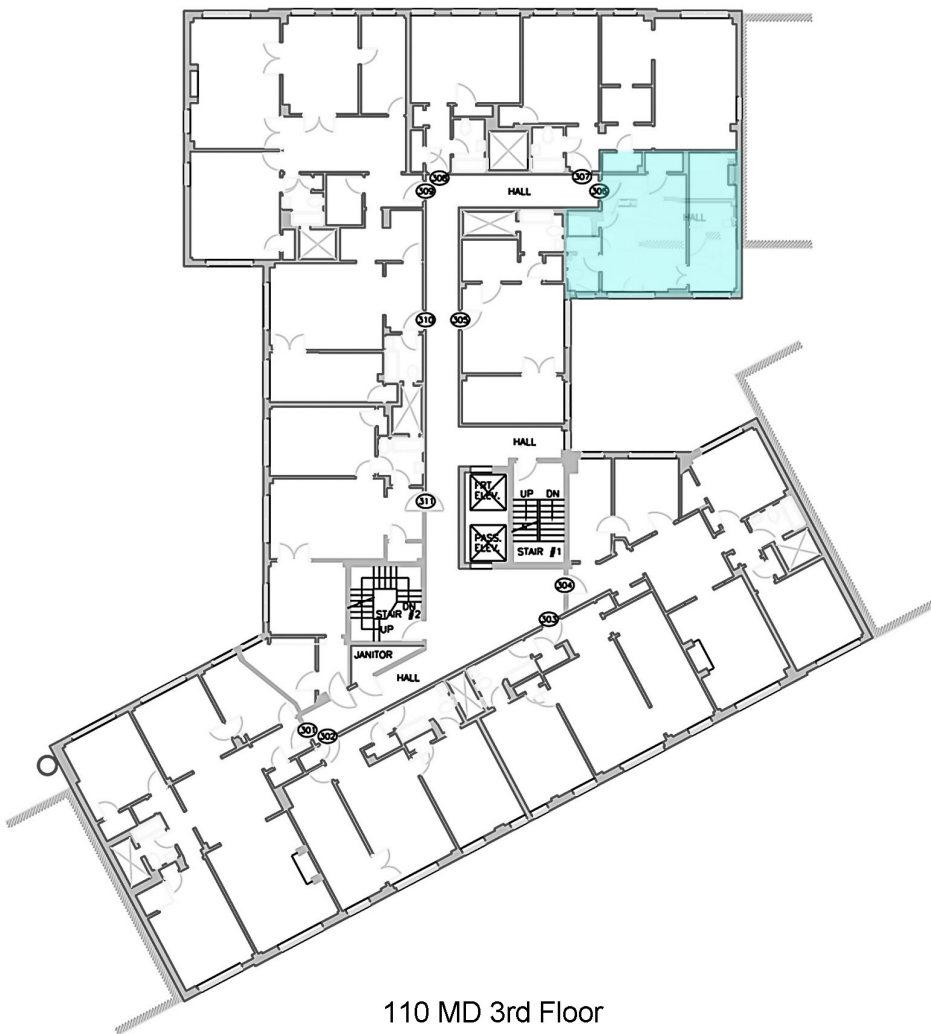
- Great 3rd floor office suite
- Open area
- Reception area
- Private restroom with shower
- Storage closet
- Large windowed conference room



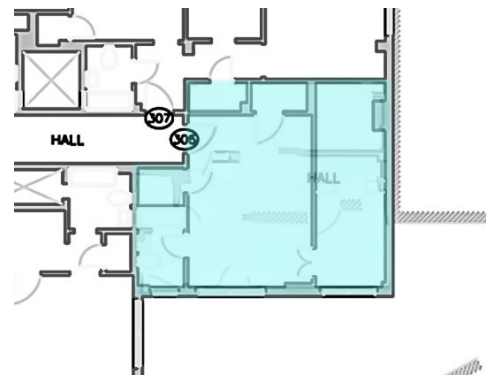
## SUITE 306 530 RSF

3rd Floor | 530 RSF | Vacant | \$48.50/ PSF

- 3rd floor corner office suite
- Large open area
- Private office
- Private restroom
- 2 storage closets
- Windows throughout



110 MD 3rd Floor

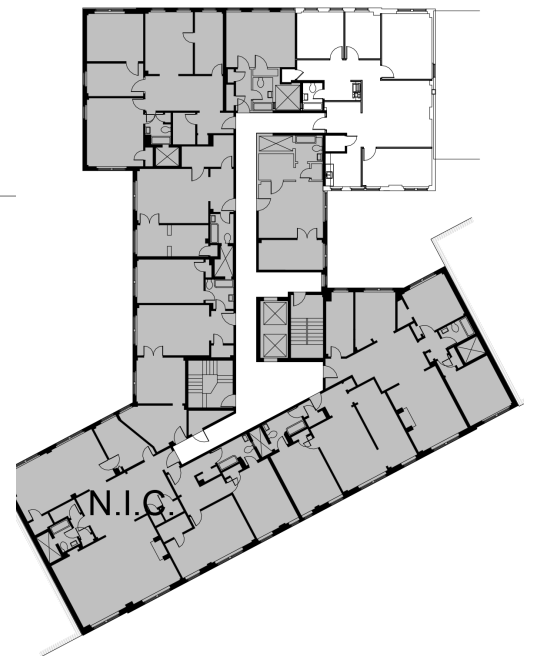
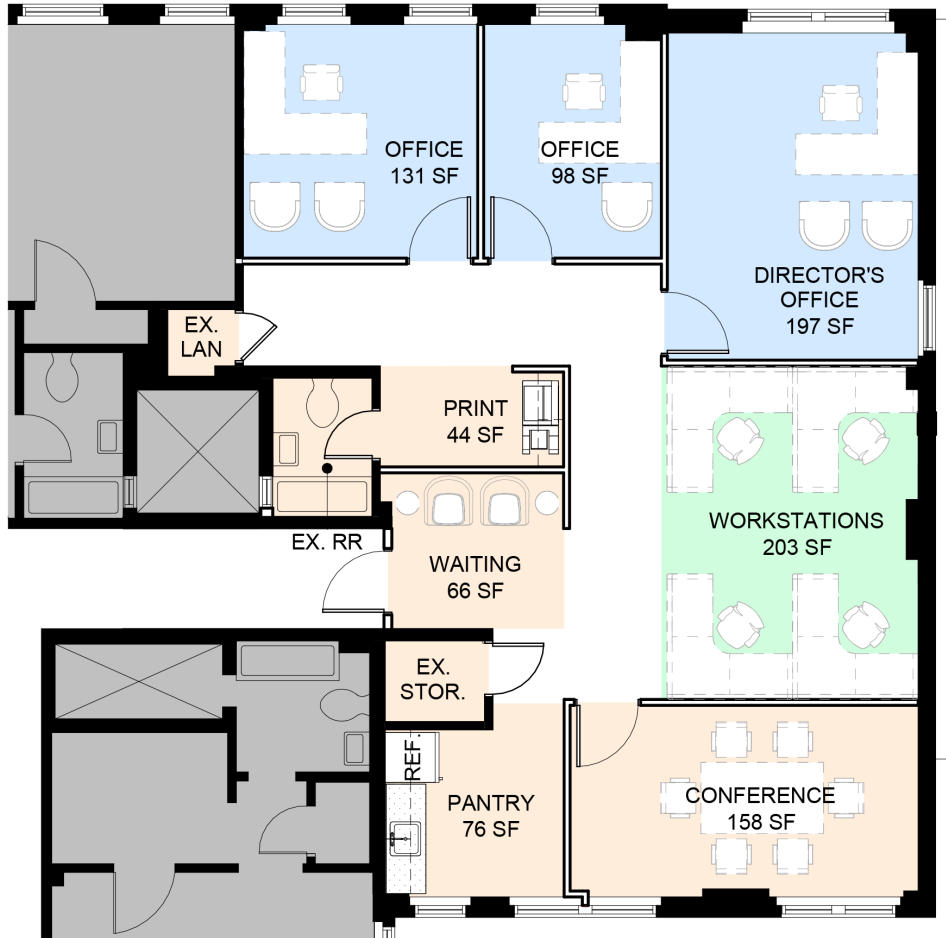




# SUITE 406/407 1,375 RSF

4th Floor | 1,375 RSF | Available 6/15/25 | \$50.00/ PSF

- Lovely first generation pre-built office suite
- Brand new finishes
- Private windowed offices
- Reception area
- Some open area
- Windowed conference room
- Storage closet, kitchenette/pantry and private restroom
- Available for occupancy beginning in mid-June 2025



110 Maryland Ave NE

STOUT&TEAGUE

## SUITE 510 663 RSF

5th Floor | 663 RSF | Vacant | \$48.50/ PSF

- Top floor (5th level) efficient office suite
- Large open and reception areas
- Internal office
- Large windowed conference room/executive office
- Private restroom

