



**353 Veteran Memorial Highway  
Commack, NY**

---

**Space Availabe: 800sq. ft. / Suite 301**

**Asking \$22.00 sq. ft Plus Uilties**

**Zoning: O-B Town of Smithtown**

**Parking: 192 Cars Entire Building**

Part of a +/- 35,000 sf medical/office building situated on +/- 4 acres wtih a 3-story atrium entrance, elevator, handicap accessibility, on-site management. Attractive, landscaped, suburban office park.

Conveniently located near the Northern State and Sunken Meadow Pkys. Nearby hospitals include St. Catherine of Siena Medical Center, Northport VA Medical Center and Huntington Hospital

For further information or to arrange inspection, please contact:

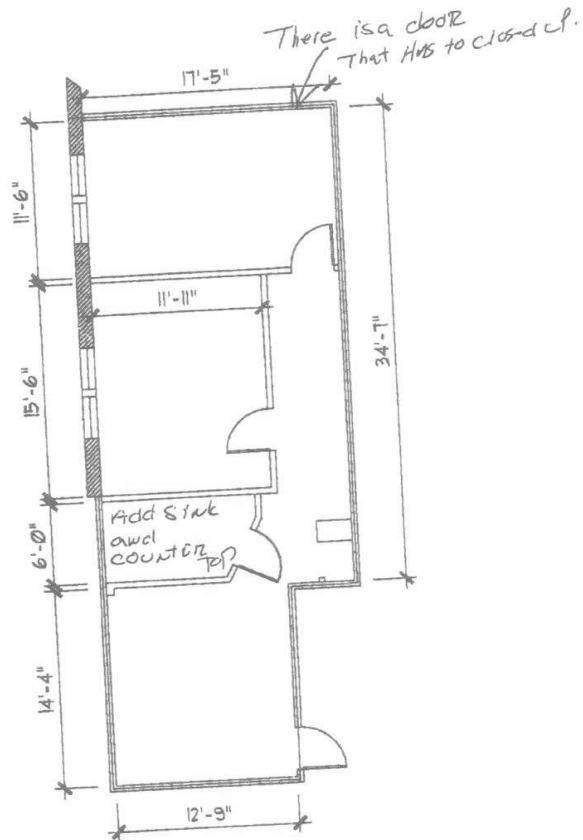
Frank Posillico

Franic Realty

Managing Principal

516-852-9087

[fposillico@franicrealty.com](mailto:fposillico@franicrealty.com)



353 VETS. MEM. HWY., COMMACK, NY  
 SUITE 301 - EXISTING FLOOR PLAN

**+/- 830SF**

