

576 NATOMA STREET

SAN FRANCISCO, CA

*±3,450 SF Creative
Commercial Single
Tenant Building*

 TAKE VIRTUAL TOUR

SCOTT VIX

415.309.4015
scott.vix@kidder.com

LIC N° 01407761

GARY COHEN

415.229.8909
gary.cohen@kidder.com

LIC N° 00831936

KIDDER.COM



 **Kidder
Mathews**



*Versatile Open Floor Plan Flooded
with Natural Light*

Operable windows

Skylights

Conference room

Two (2) private offices

HVAC on both floors

Utility sink with upper & lower cabinets, refrigerator,
and dishwasher

Both wood flooring and concrete floors

Garage door loading or parking

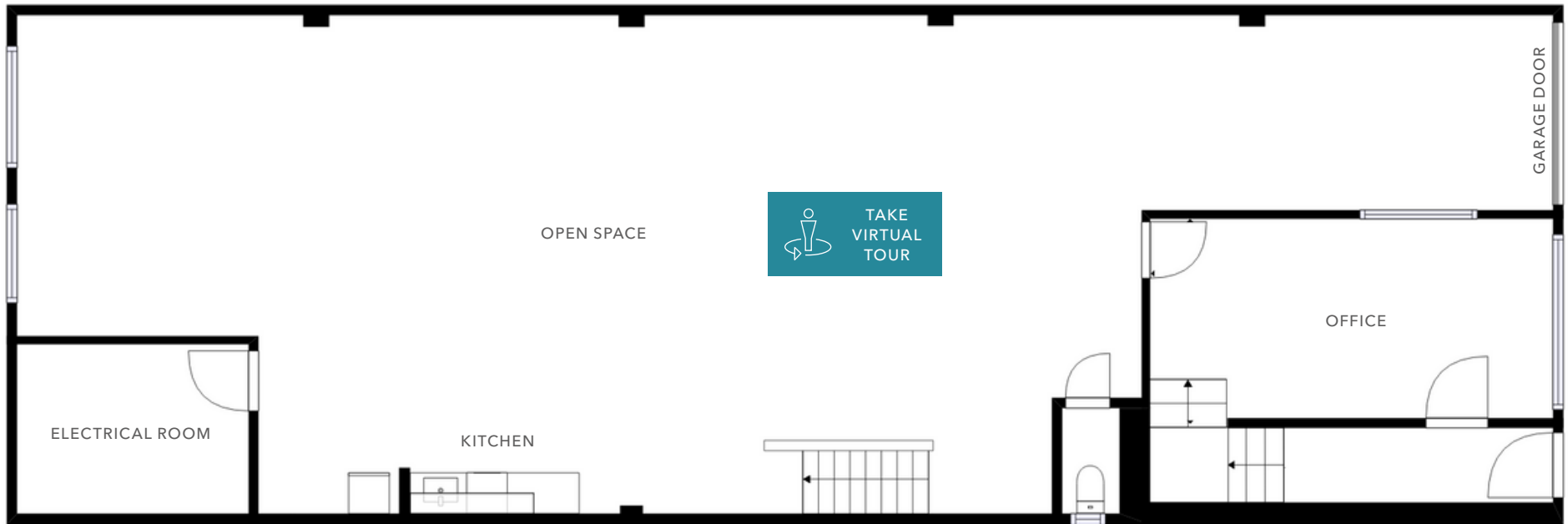
RED (SOMA Residential Enclave)

1.5 blocks to BART

NOW
AVAILABLE

\$6,000
LEASE RATE MO/IG

GROUND FLOOR PLAN



FLOOR PLAN NOT TO SCALE

576 NATOMA STREET

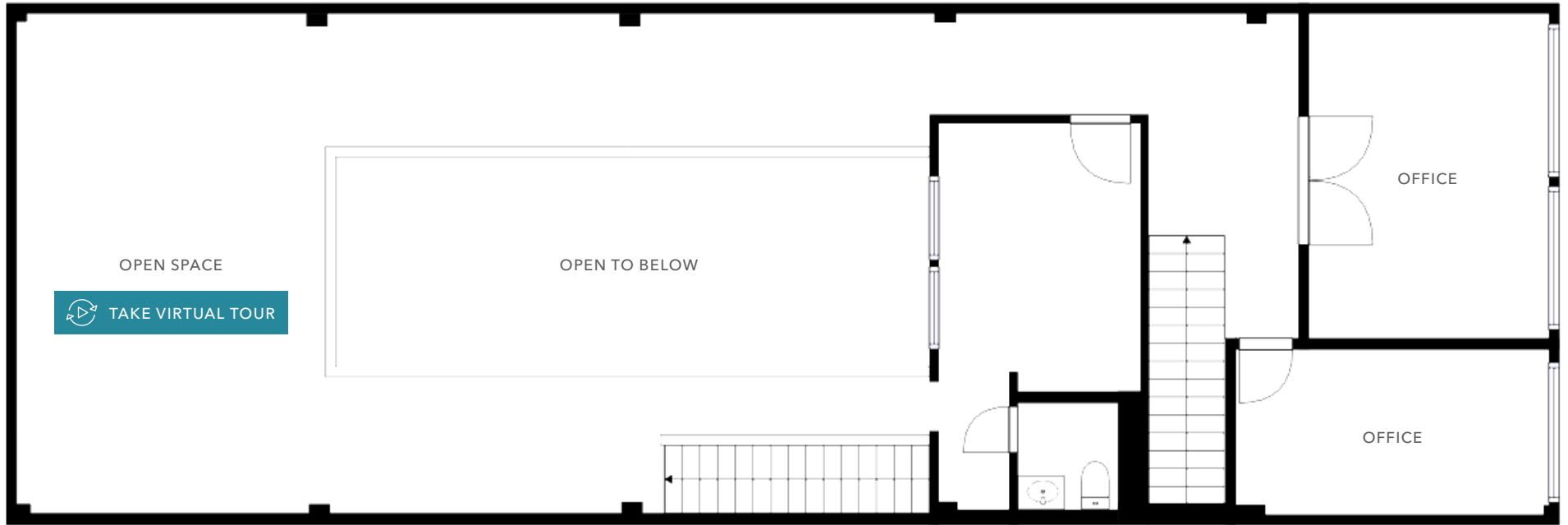
GROUND FLOOR



AVAILABLE FOR LEASE

KIDDER MATHEWS

SECOND FLOOR PLAN



FLOOR PLAN NOT TO SCALE

SECOND FLOOR





576 NATOMA STREET

For more information on this property, please contact

SCOTT VIX
 415.309.4015
 scott.vix@kidder.com
 LIC N° 01407761

GARY COHEN
 415.229.8909
 gary.cohen@kidder.com
 LIC N° 00831936

KIDDER.COM

This information supplied herein is from sources we deem reliable. It is provided without any representation, warranty, or guarantee, expressed or implied as to its accuracy. Prospective Buyer or Tenant should conduct an independent investigation and verification of all matters deemed to be material, including, but not limited to, statements of income and expenses. Consult your attorney, accountant, or other professional advisor.



*For more
information about
this transaction,
please get in touch.*

SCOTT VIX

415.229.8924

scott.vix@kidder.com

LIC N° 01407761

GARY COHEN

415.229.8909

gary.cohen@kidder.com

LIC N° 00831936

KIDDER.COM

