

# COMMERCE COMMONS

New Medical Center

2350 Commerce Parkway, Bunnell, FL 32164

1,967 SF - 9,000 SF Available



 FranklinStreet

FSOI, LLC | A Licensed Florida Broker # CQ1048040

JAKE AMMON, CCIM | Director  
Jake.Ammon@FranklinSt.com | 904.834.9809

COOPER FOLDS | Associate  
Cooper.Folds@FranklinSt.com | 229.947.3436

# PROPERTY SUMMARY



## PROPERTY OVERVIEW

We are excited to offer this premier medical and professional development located along the central corridor of Bunnell, FL, a rapidly expanding market.

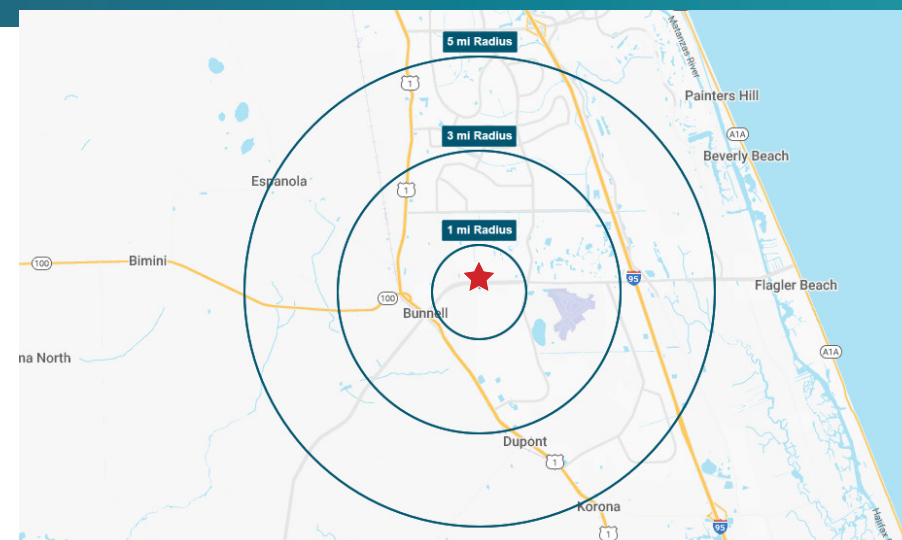
One of the latest major area developments, the Preserve at Haw Creek, will be a short drive away. This development is a residential and commercial project planned for 6,000 homes that is estimated to quadruple the local population over the next few years.

## PROPERTY HIGHLIGHTS

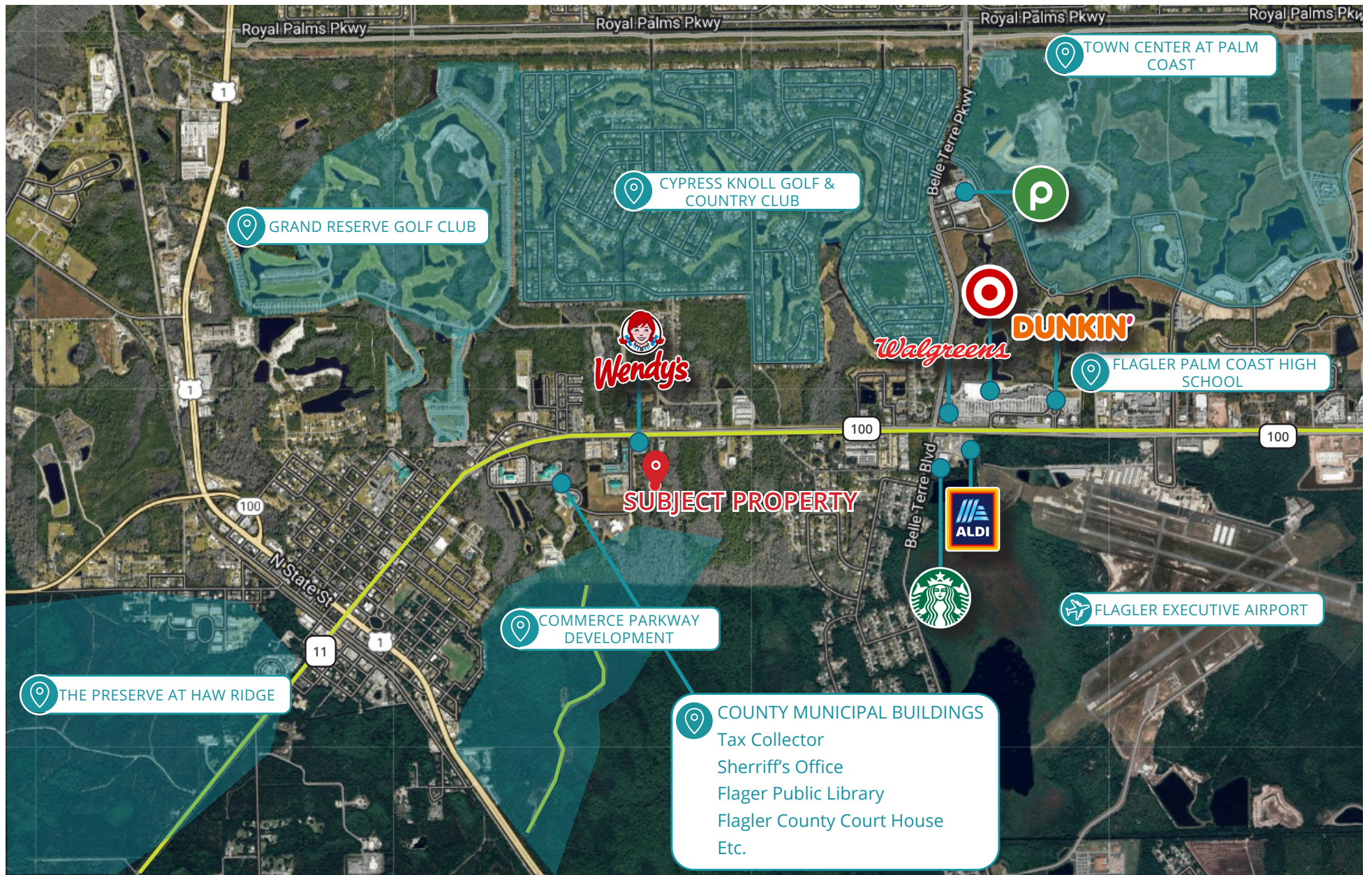
- New construction delivering June 2025
- Ground floor restaurant concept with patio
- Quick access to I-95, US-1, and State Route 100
- High traffic location with excellent visibility
- Ground floor suites with direct access for handicapped accessibility
- B-1 zoning (Business-1)

## AREA DEMOGRAPHICS

	1 MILE	3 MILE	5 MILE
Population	3,128	25,635	55,686
Total Households	1,255	10,171	21,919
Average Income	\$68,374	\$75,176	\$80,663
Median Age	50	46.6	47.3
Daytime Population	3,031	8,810	12,019



# AREA OVERVIEW



# FLOOR PLAN

