



Sublease Available

1960 Folsom St

SAN FRANCISCO, CA 94103

SPACE PROFILE

BUILDING SIZE

34,325 SF

PARKING/YARD

18,375 SF

GATED LOT (PERFECT FOR FLEET USERS)

RENTAL RATE

INQUIRE WITH BROKER

TERM

4/30/2026

BUILDING FEATURES

RECENTLY UPGRADED: Extensive capital improvements by a robotics company, move-in ready for similar users.

FLEXIBLE USE: Ideal for AI, robotics, clean energy, automotive users, service providers with fleets (e.g., plumbing or electrical companies), light manufacturing, or distribution.

FUNCTIONAL LAYOUT: Balanced office/R&D and warehouse configuration.

POWER: 1,000 Amps, 3-phase power, supports heavy equipment and advanced tech needs.

ACCESS & LOADING: 6 large drive-in doors for seamless logistics and distribution.

ZONING: PDR-1-G for production, distribution, and repair.

ADDITIONAL FEATURES:

- Floor drains (suitable for automotive or lab use)
- Fire sprinklers throughout
- Alarm system with FOB access
- Former automotive facility, suited for EV or mobility-related users.
- Freight Elevator: 2,000 Lb capacity
- Air Handling System: Large system designed for exhaust

For more information:

David LaBree

510.851.1499
dlabree@cresa.com
BRE# 02093244

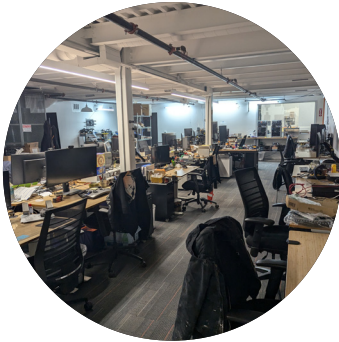
Scott Stone

510.593.4002
sstone@cresa.com
BRE# 01230051

cresa

FLOORPLAN

1960 Folsom St | 34,325 SF | Thru 4/30/2026



Office



Conference Room

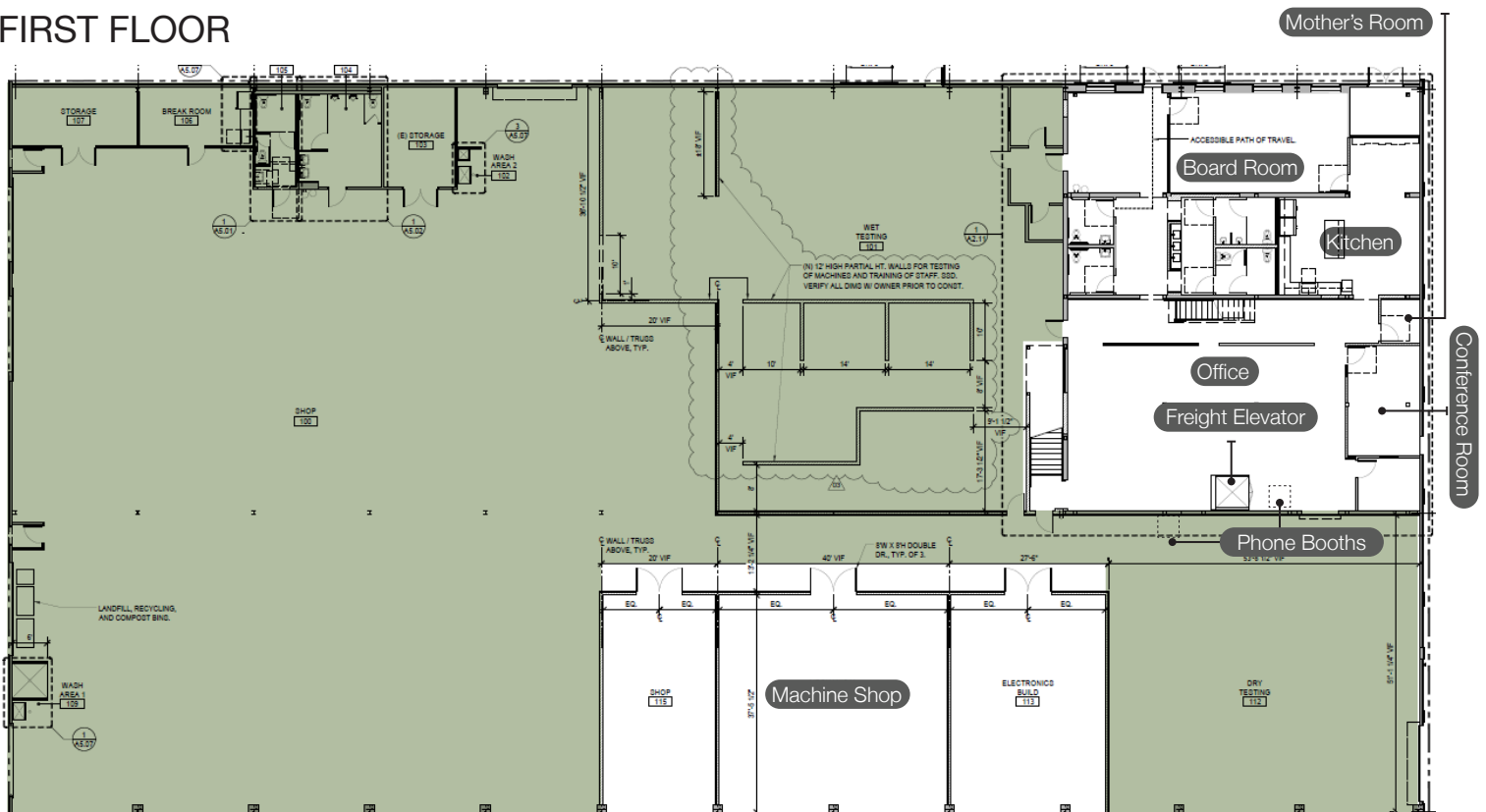


Board Room



Kitchen

FIRST FLOOR



- 1 Board Room • 1 Large Conference Room • 1 Medium Conference Room • Mothers Room
- Freight Elevator: 2,000 Lb capacity • Air Handling System: Large system designed for exhaust

 Warehouse

For more information:

David LaBree

510.851.1499
dlabree@cresa.com
BRE# 02093244

Scott Stone

510.593.4002
sstone@cresa.com
BRE# 01230051



FLOORPLAN

1960 Folsom St | 34,325 SF | Thru 4/30/2026



Mezzanine Office

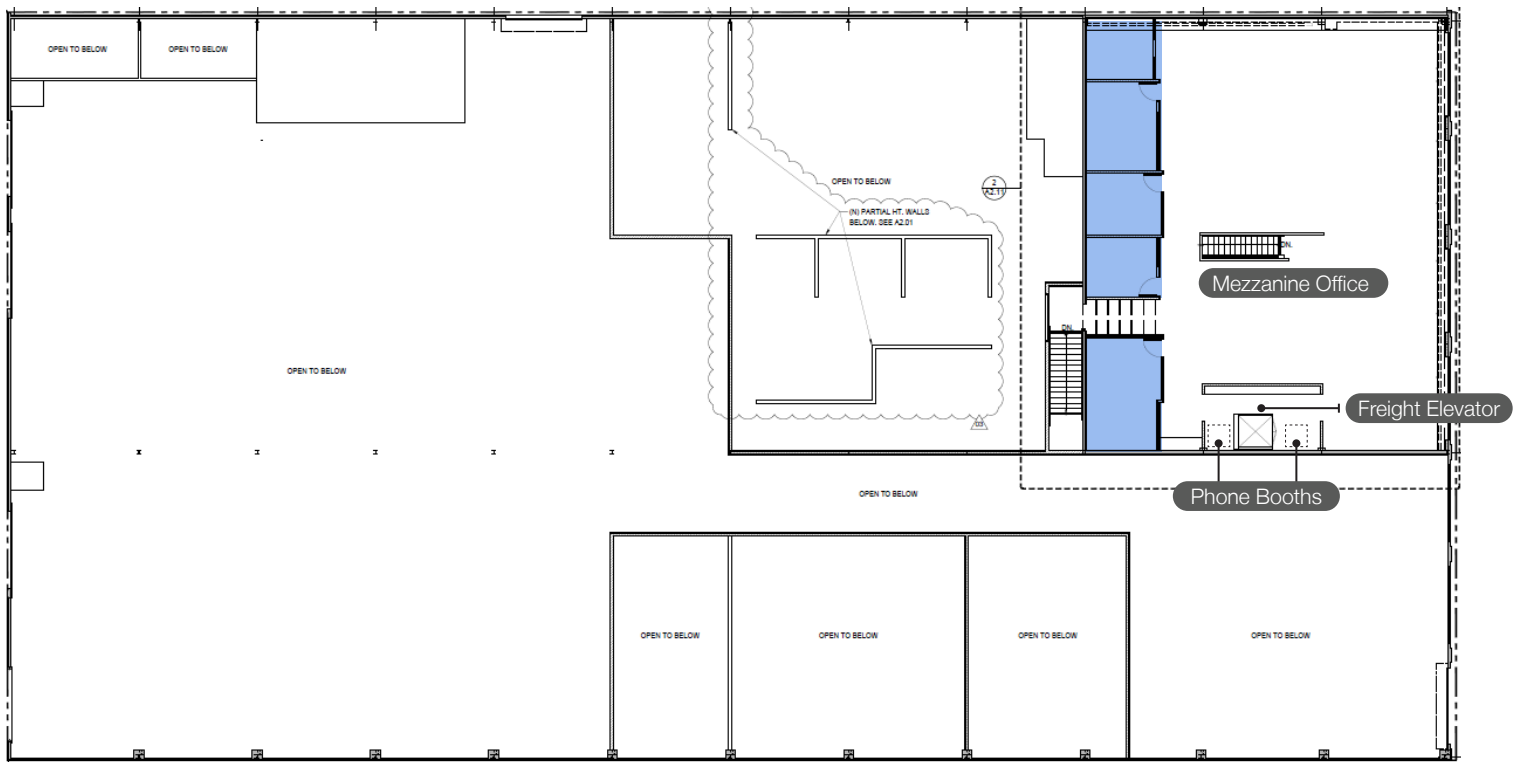


Phone Booths



Conference Room

MEZZANINE



- 2 Large Conference Rooms • 2 Medium Conference Rooms • Open Office

 Conference Rooms

For more information:

David LaBree

510.851.1499
dlabree@cresa.com
BRE# 02093244

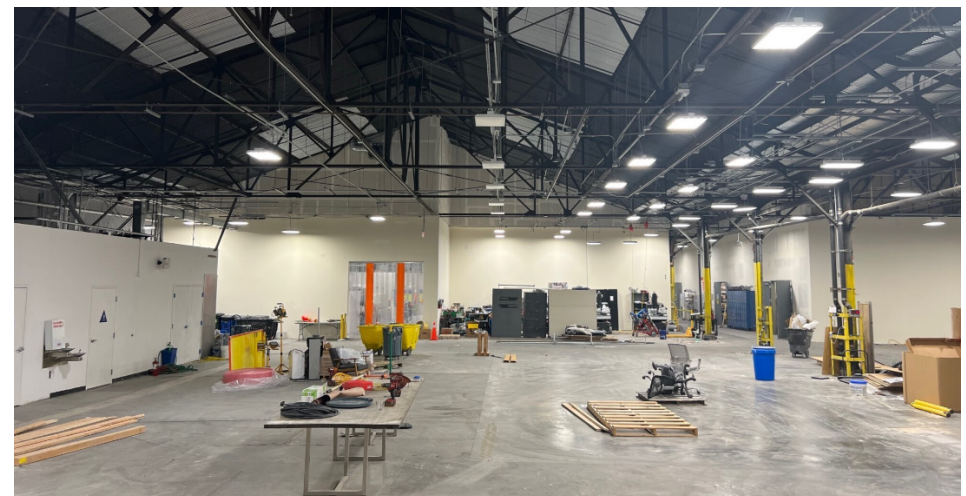
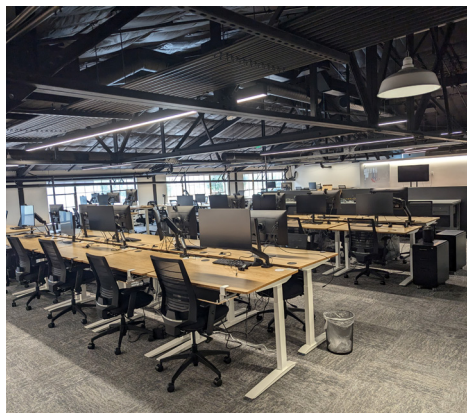
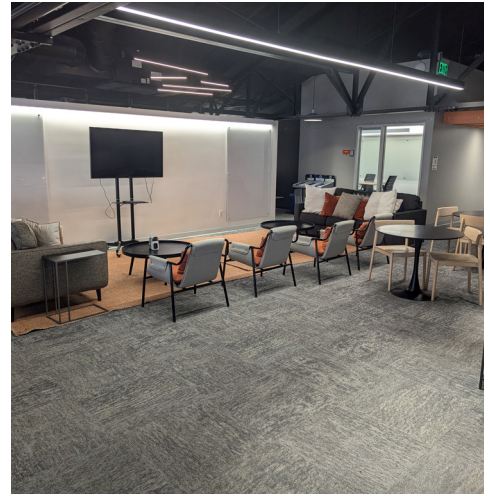
Scott Stone

510.593.4002
sstone@cresa.com
BRE# 01230051



PHOTOS

1960 Folsom St | 34,325 SF | Thru 4/30/2026



For more information:

David LaBree

510.851.1499
dlabree@cresa.com
BRE# 02093244

Scott Stone

510.593.4002
sstone@cresa.com
BRE# 01230051

cresa