

# 2306 IFCU WAY

Lafayette, IN 47909



## PROPERTY DESCRIPTION

Dustin Zufall and Jim Pitoukkas are proud to present this exceptional opportunity to purchase the real estate occupied by one of the region's most successful independent used car dealerships. The dealership has offered the community quality late model vehicles and service for over two decades. The offering presents a buyer the opportunity to either operate a similar business, redevelop, or lease the real estate to a new operator. The sales office building features a well-appointed lobby and administrative area, eleven generously sized private offices, a kitchenette, two restrooms, ample parking, and a covered outdoor break area. The five bay automotive shop building features three large offices, two restrooms, a detail shop with two overhead doors and storage mezzanine area, a three-bay mechanic shop with one pass-thru door, and one wash bay complete with reverse osmosis system. Equipment including a tire machine, air compressors, and lifts available separately. All bays are plumbed for oil and feature central air compressors.

Sale Price:

\$3,600,000 (properties available separately)

Frontage lots and buildings \$2,600,000

Paved lots north of IFCU Way \$1,000,000

## PROPERTY HIGHLIGHTS

- Turnkey automotive business opportunity
- Sales building features a flexible layout that can suit a variety of users
- Proven location with great visibility

## OFFERING SUMMARY

Sale Price:	\$3,600,000
Lot Size:	5 Acres
Building Size:	2,800 SF

DEMOGRAPHICS	1 MILE	2 MILES	3 MILES
Total Households	3,951	11,860	20,571
Total Population	10,060	30,081	50,245
Average HH Income	\$92,119	\$81,333	\$75,751

**JIM PITOUKKAS**

317.281.8811

jpitoukkas@shook.com

**DUSTIN ZUFALL**

765.427.2047

dzufall@shook.com

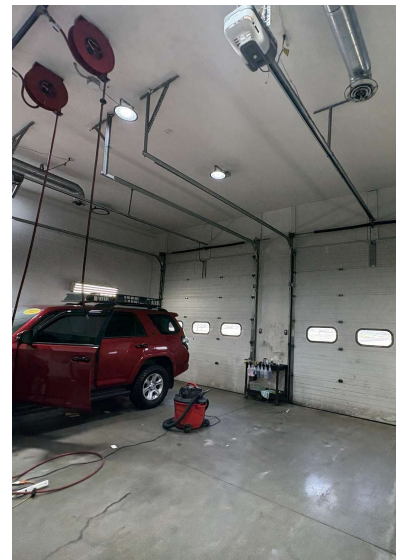
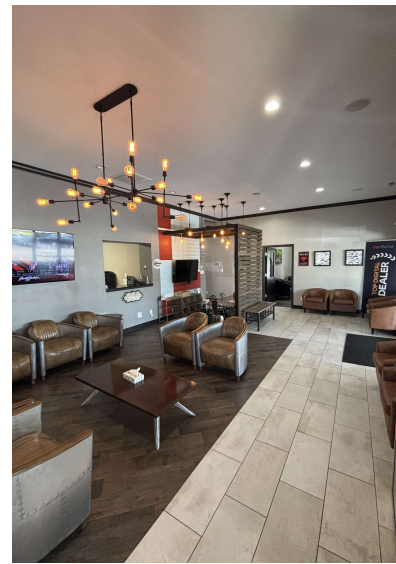


RETAIL PROPERTY FOR SALE

# 2306 IFCU WAY

Lafayette, IN 47909

**SHOOK** COMMERCIAL  
REAL ESTATE



**JIM PITOUKKAS**

317.281.8811

jpitoukkas@shook.com

**DUSTIN ZUFALL**

765.427.2047

dzufall@shook.com



# 2306 IFCU WAY

Lafayette, IN 47909



Map data ©2025 Google Imagery ©2025 Airbus, CNES / Airbus, Maxar Technologies

**JIM PITOUKKAS**

317.281.8811

jpitoukkas@shook.com

**DUSTIN ZUFALL**

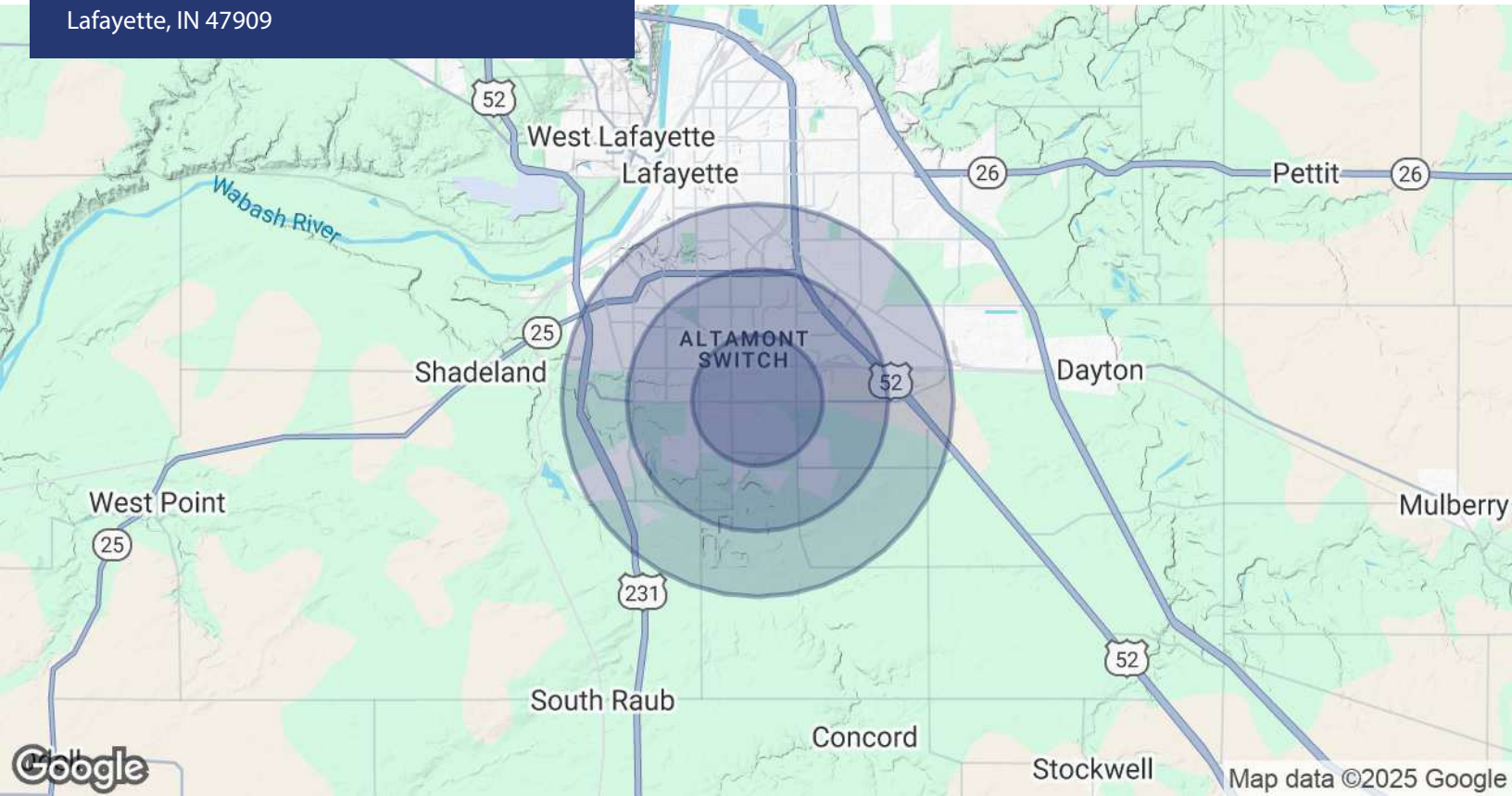
765.427.2047

dzufall@shook.com



# 2306 IFCU WAY

Lafayette, IN 47909



POPULATION	1 MILE	2 MILES	3 MILES
Total Population	10,060	30,081	50,245
Average Age	37	37	37
Average Age (Male)	36	36	36
Average Age (Female)	39	38	38

HOUSEHOLDS & INCOME	1 MILE	2 MILES	3 MILES
Total Households	3,951	11,860	20,571
# of Persons per HH	2.5	2.5	2.4
Average HH Income	\$92,119	\$81,333	\$75,751
Average House Value	\$260,404	\$227,500	\$228,476

Demographics data derived from AlphaMap

**JIM PITOUKKAS**

317.281.8811

jpitoukkas@shook.com

**DUSTIN ZUFALL**

765.427.2047

dzufall@shook.com