

*For Lease
Medical Office Suites
Exceptional Location for Medical Professionals*

ELITE PLASTIC SURGERY

SUITE 100

**10910 N TATUM BLVD, BUILDING B
PHOENIX, AZ 85028**

PROPERTY OVERVIEW

Located in a well-established medical corridor, 10910 N Tatum Blvd provides strong visibility and built-in synergy among numerous healthcare providers, reinforcing the area as a hub for advanced medical services. Its north Phoenix location near Paradise Valley offers easy access from major thoroughfares, ample parking, and close proximity to residential communities. With existing practices ranging from cosmetic surgery to reconstructive and multi-specialty care, the building benefits from proven patient demand, creating an ideal setting for new or expanding medical tenants.

PROPERTY DETAILS

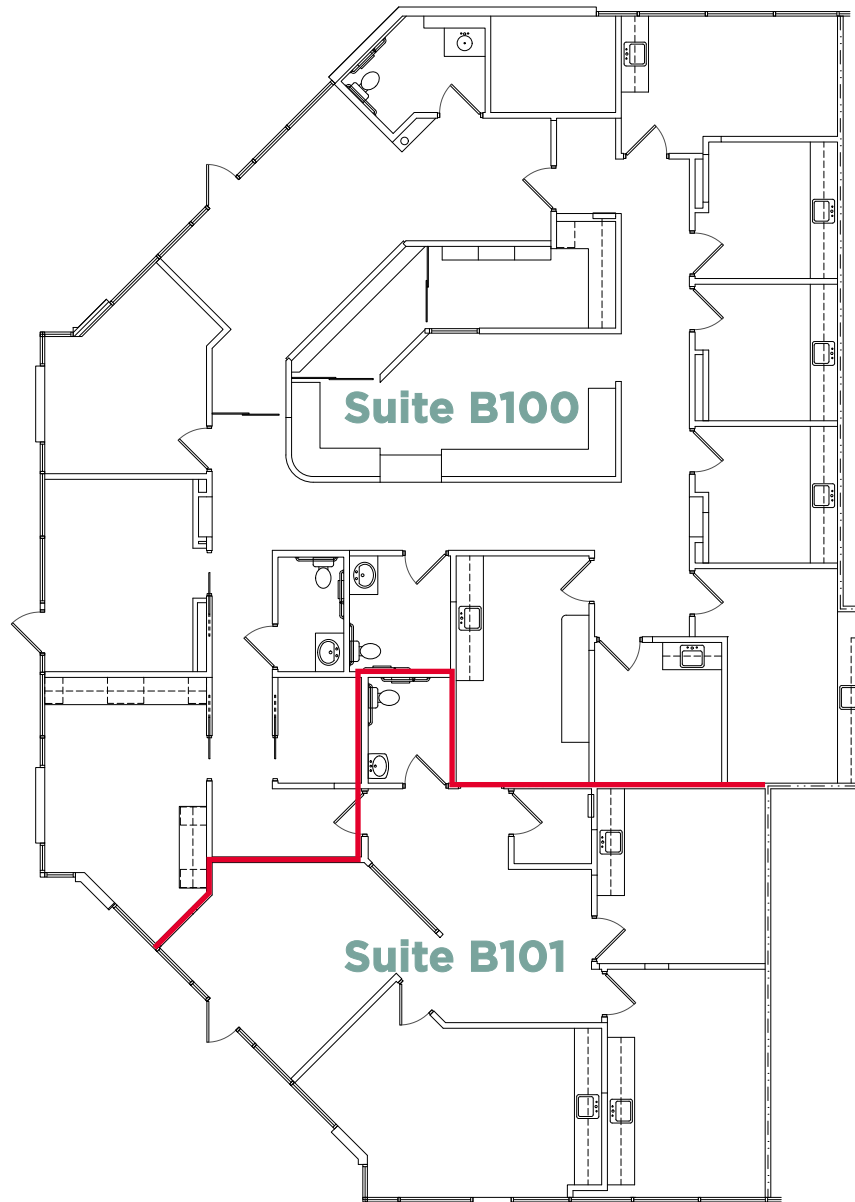
Address	10901 N Tatum Blvd, Building B, Phoenix
Available Suites	Suite 100: 2,711 SF Suite 101: 1,531 SF * Contiguous to 4,242 SF
Building SF	7,097 SF
Lease Rate	\$30.00 PSF NNN
Parking Ratio	4.50/1,000 SF
Parking	Covered parking available
Year Built	2003
Renovated	2018



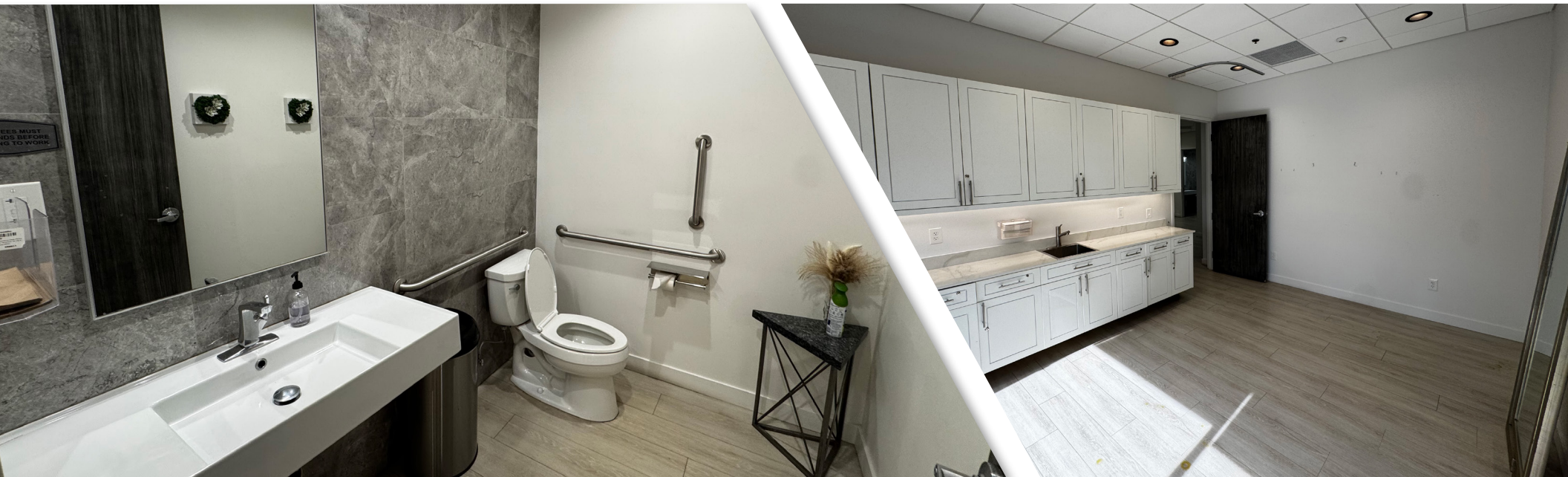
FLOOR PLAN

Suite B100: 2,711 SF | **Suite B101:** 1,531 SF

- 12 Exam Rooms (9 with Sinks)
- 4 Bathrooms
- Reception & Waiting Area



PROPERTY PHOTOS



AERIAL MAP



LOCATION OVERVIEW



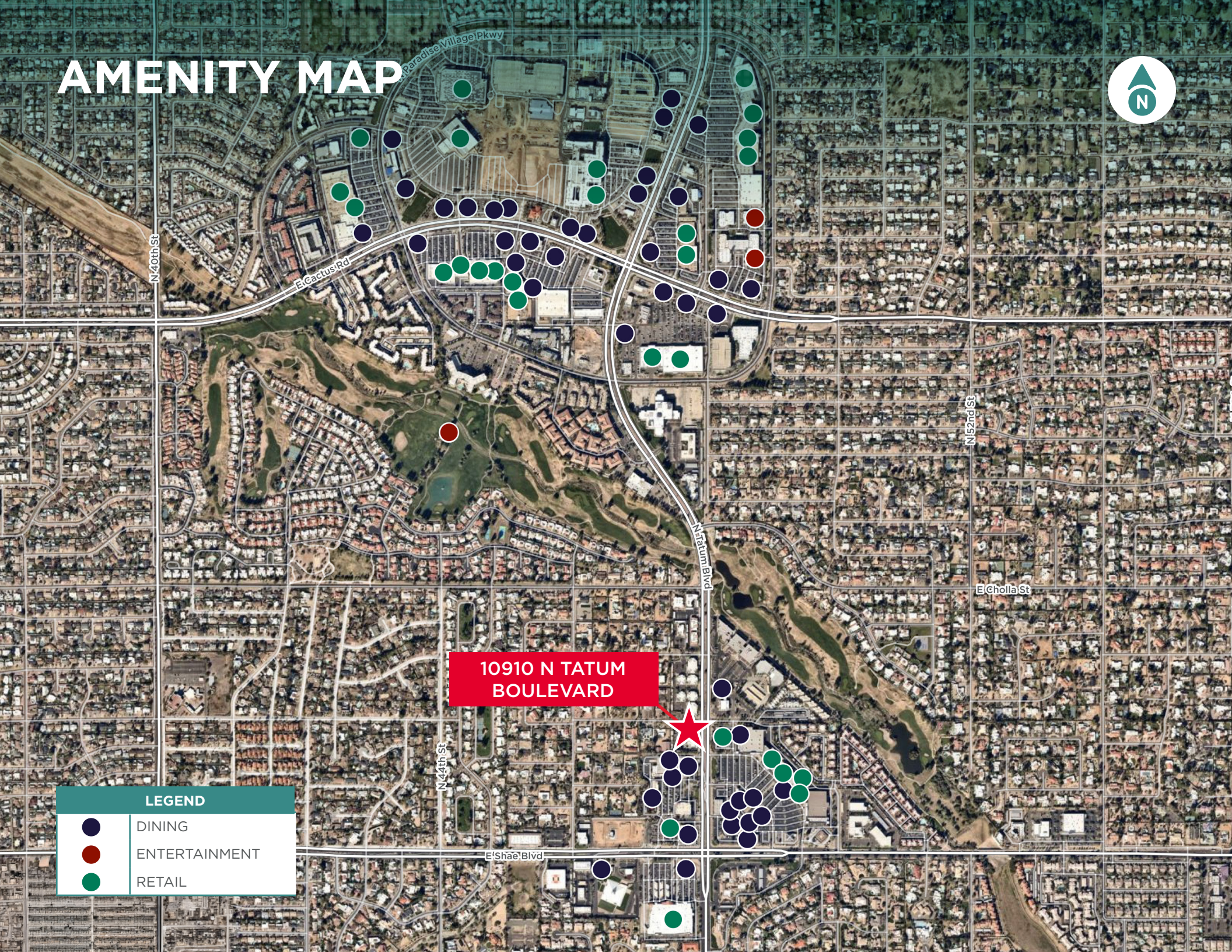
**10910 N TATUM
BOULEVARD**

38,234




43,209

DEMOGRAPHICS	3 MILES	5 MILES	10 MILES
TOTAL POPULATION	76,834	212,988	1,041,523
MEDIAN HOUSEHOLD INCOME	\$112,581	\$108,508	\$89,023
MEDIAN HOME VALUE	\$638,358	\$642,506	\$561,015

AMENITY MAP



**10910 N TATUM
BOULEVARD**

LEGEND	
	DINING
	ENTERTAINMENT
	RETAIL

TEAM CONTACTS:

SCOTT BOARDMAN

Executive Managing Director
+1 602 224 4446
scott.boardman@cushwake.com

PAIGE BLANZY

Associate
+1 602 224 4484
paige.blanz@cushwake.com

2555 E Camelback Road, Suite 400
Phoenix, AZ 85016
Main +1 602 954 9000
Fax +1 602 253 0528
cushmanwakefield.com

©2026 Cushman & Wakefield. All rights reserved. The information contained in this communication is strictly confidential. This information has been obtained from sources believed to be reliable but has not been verified. NO WARRANTY OR REPRESENTATION, EXPRESS OR IMPLIED, IS MADE AS TO THE CONDITION OF THE PROPERTY (OR PROPERTIES) REFERENCED HEREIN OR AS TO THE ACCURACY OR COMPLETENESS OF THE INFORMATION CONTAINED HEREIN, AND SAME IS SUBMITTED SUBJECT TO ERRORS, OMISSIONS, CHANGE OF PRICE, RENTAL OR OTHER CONDITIONS, WITHDRAWAL WITHOUT NOTICE, AND TO ANY SPECIAL LISTING CONDITIONS IMPOSED BY THE PROPERTY OWNER(S). ANY PROJECTIONS, OPINIONS OR ESTIMATES ARE SUBJECT TO UNCERTAINTY AND DO NOT SIGNIFY CURRENT OR FUTURE PROPERTY PERFORMANCE.

PD-179099

