



Former Rite Aid

1155 Main St
 West Warwick, Rhode Island 02893

Property Highlights

- 10,690 SF free-standing building
- - Built in 2008
- - Modern construction
- - High-visibility location
- - High-traffic area

Property Overview

Invest in a prime retail opportunity with our 10,690 SF free-standing building at 1155 Main St, West Warwick. This modern structure, built in 2008, offers a strategic location in the B-zoned West Warwick area, with ample space for retail. This property is located across from the West Warwick town hall and post office.

Offering Summary

| | |
|----------------|-------------|
| Sale Price: | \$1,650,000 |
| Building Size: | 10,690 SF |
| Available SF: | |
| Lot Size: | 45,076 SF |

Demographics

| | 0.3 Miles | 0.5 Miles | 1 Mile |
|-------------------|-----------|-----------|----------|
| Total Households | 934 | 2,368 | 6,454 |
| Total Population | 2,089 | 5,204 | 14,461 |
| Average HH Income | \$85,352 | \$85,800 | \$83,179 |

For More Information

Brian W. Clark

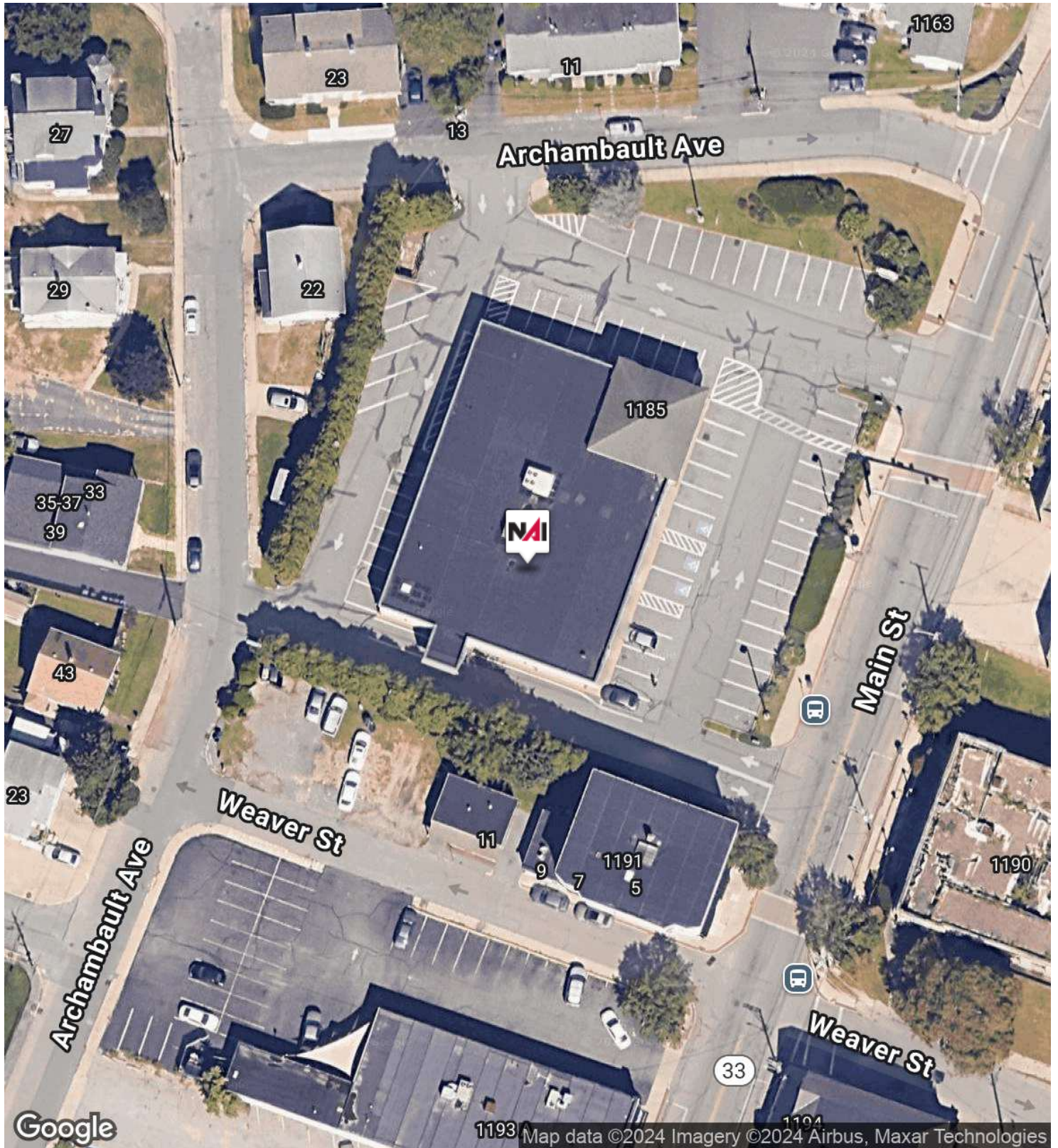
O: 401 301 9002
 bclark@naiadvisors.com



For Sale

10,690 SF | \$1,650,000

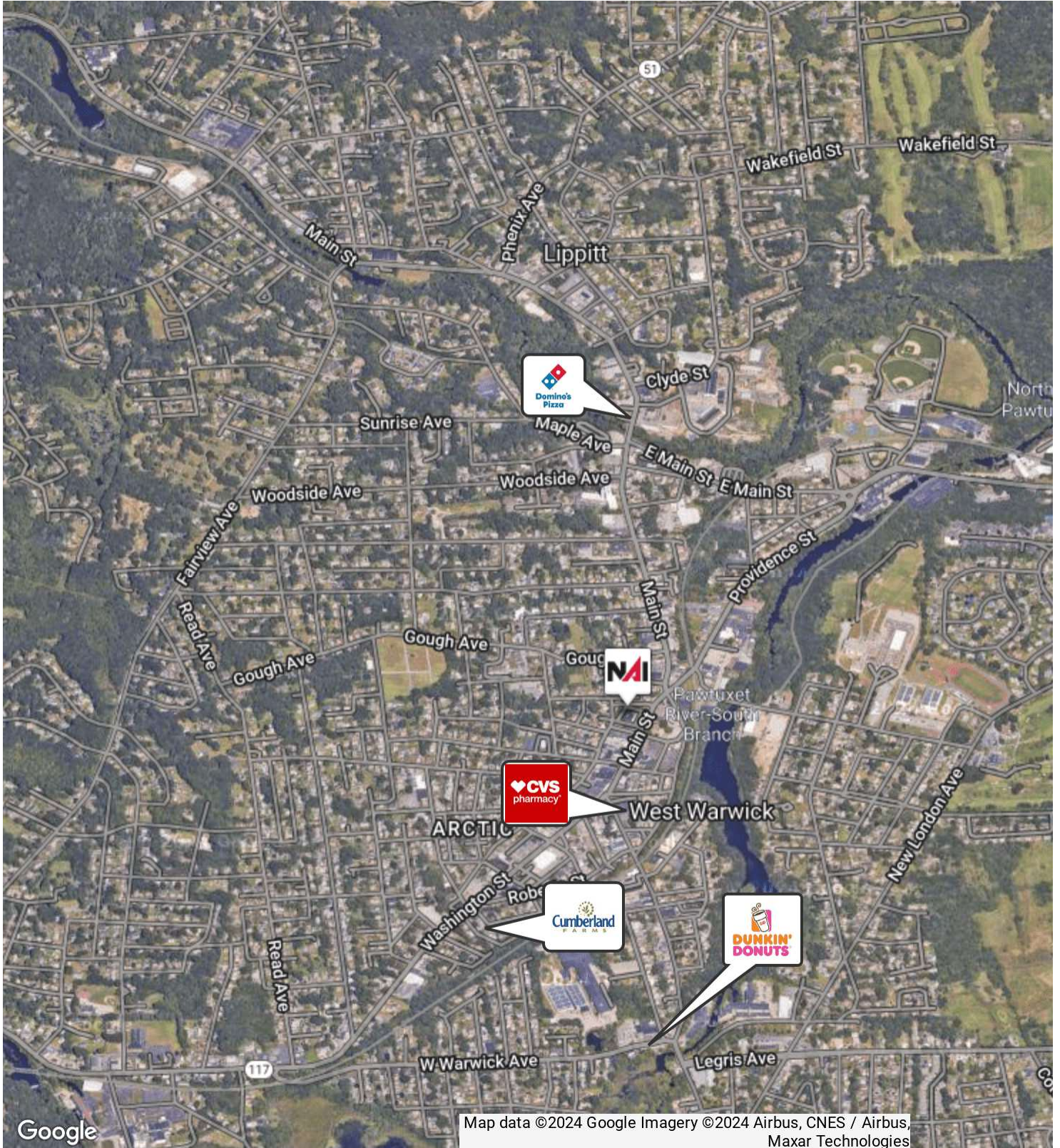
Retail Space





Google

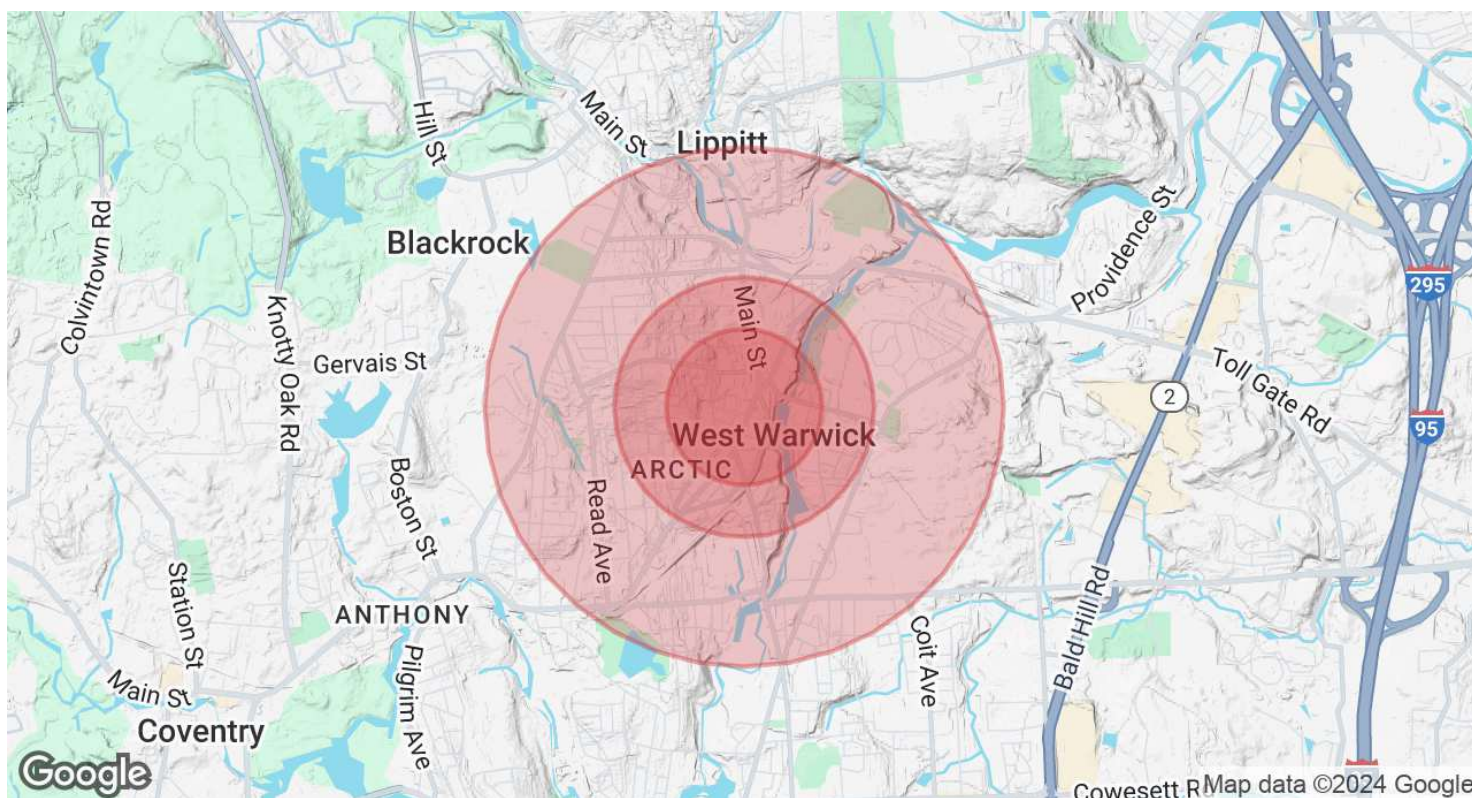
Map data ©2024 Google Imagery ©2024 Airbus, Maxar Technologies



For Sale

10,690 SF | \$1,650,000

Retail Space



| Population | 0.3 Miles | 0.5 Miles | 1 Mile |
|----------------------|-----------|-----------|--------|
| Total Population | 2,089 | 5,204 | 14,461 |
| Average Age | 40 | 41 | 41 |
| Average Age (Male) | 40 | 40 | 40 |
| Average Age (Female) | 41 | 41 | 42 |

| Households & Income | 0.3 Miles | 0.5 Miles | 1 Mile |
|---------------------|-----------|-----------|-----------|
| Total Households | 934 | 2,368 | 6,454 |
| # of Persons per HH | 2.2 | 2.2 | 2.2 |
| Average HH Income | \$85,352 | \$85,800 | \$83,179 |
| Average House Value | \$276,274 | \$282,800 | \$309,028 |

Demographics data derived from AlphaMap