

Freestanding Former Bank with Drive-thru

2,500 SF Available

307 Trapelo Road
Belmont, Massachusetts



Features

- + Former TD Bank available for sublease
- + This is a single tenant, stand-alone opportunity with a drive-thru and a private parking lot
- + Opportunity to have a presence in a prestigious Boston suburb with an average household income of \$200,374 within a one-mile radius
- + Located just past Waverly Square in Belmont with neighboring retailers such as Tatte, Star Market, Dunkin' and CVS
- + LB III zoning permits for a daycare center, recreational uses and retail sales and restaurants with special permits

Freestanding Former Bank with Drive-thru

307 Trapelo Road | Belmont, Massachusetts

Retail Market



2024 Demographics	1 Mile	3 Miles	5 Miles	7 Miles
Estimated Population	26,526	217,935	644,688	1,109,887
Estimated Households	10,678	90,644	259,443	456,858
Estimated Average Household Income	\$200,374	\$186,449	\$183,081	\$175,644
Estimated Daytime Population	24,615	209,145	672,482	1,492,303

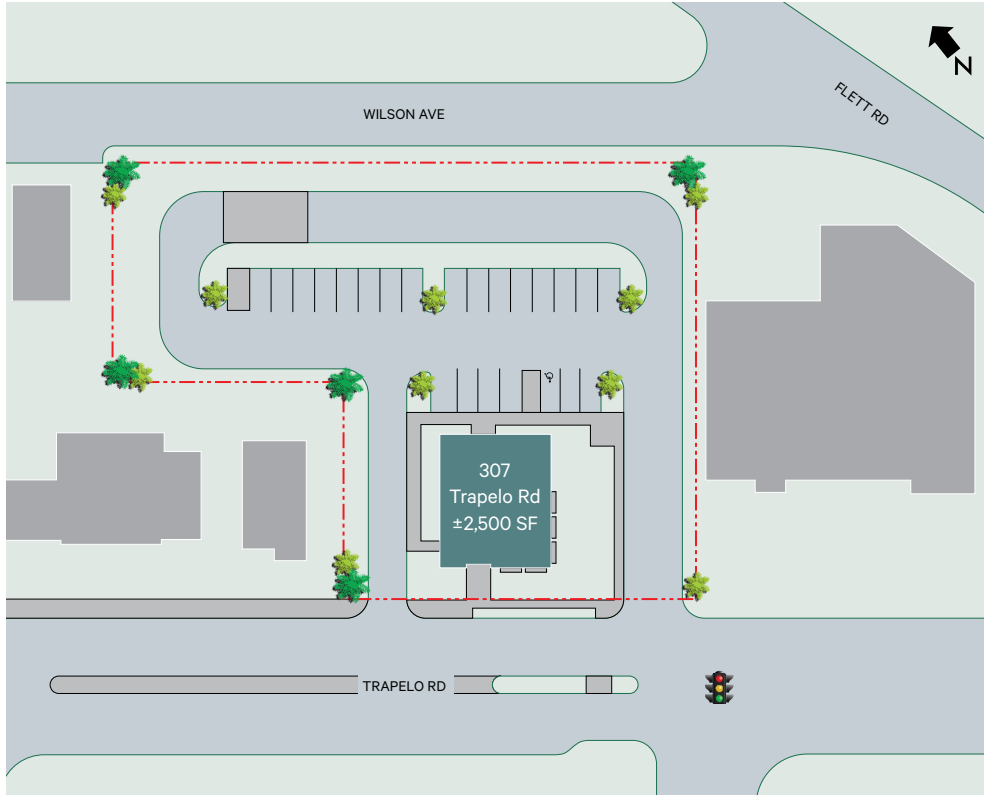


Freestanding Former Bank with Drive-thru

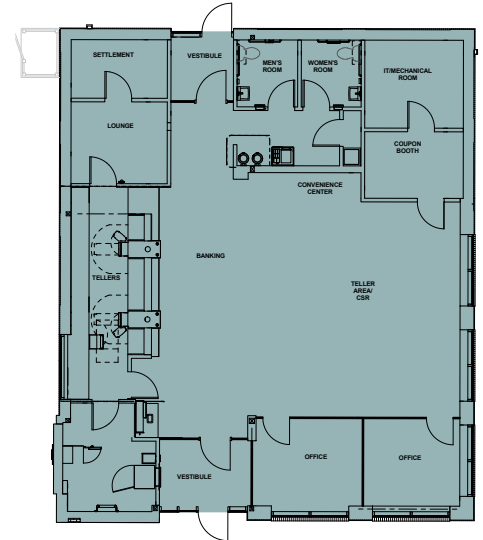
307 Trapelo Road | Belmont, Massachusetts

For Sublease

Site Plan



Floor Plan



Contact Us

Josh Kulak

Senior Associate

+1 617 912 6835

josh.kulak@cbre.com

Katrina Giotsas

Associate

+1 857 328 4173

katrina.giotsas@cbre.com

© 2024 CBRE, Inc. All rights reserved. This information has been obtained from sources believed reliable, but has not been verified for accuracy or completeness. You should conduct a careful, independent investigation of the property and verify all information. Any reliance on this information is solely at your own risk. CBRE and the CBRE logo are service marks of CBRE, Inc. All other marks displayed on this document are the property of their respective owners, and the use of such logos does not imply any affiliation with or endorsement of CBRE. Photos herein are the property of their respective owners. Use of these images without the express written consent of the owner is prohibited.