

# 1814-1820 Sawtelle Blvd

Los Angeles, CA

Development Opportunity

1814-1820 Sawtelle Blvd,  
Los Angeles

**E**  
ELIZABETH DO  
— TEAM —  
DRE #01473012

**kw** HUNTINGTON  
BEACH  
KELLERWILLIAMS.  
DRE #01932401

18055 Bushard St, Fountain Valley, CA 92708

First  
Team.

MISSION  
GROUP



## TABLE OF CONTENTS

- 1. Aerial Photos . . . . . 3
- 2. Property Description. . . . . 4



### Property Details:

This site stands as *one of the last few undeveloped parcels in this highly coveted area.*

Currently, the property is comprised of 3 commercial storefront units, 1 Single Family Residential, and 3 multifamily units.

Lot dimensions are approximately 88ft wide by 140ft deep, with a total lot size of 12,000 Sq Ft of LAC2 zoned land.

### FOR MORE INFORMATION:

**Ryan Edwards**

REALTOR® | DRE #01709031

(714) 336-5234

ryan@elizabethdo.com

18055 Bushard St, Fountain Valley, CA 92708

**ELIZABETH DO**  
TEAM  
DRE #01473012

**kw** HUNTINGTON  
BEACH  
KELLERWILLIAMS.  
DRE #01932401

**Monica Hathaway**

REALTOR® | DRE #01382216

BROKER | BRE #01008773

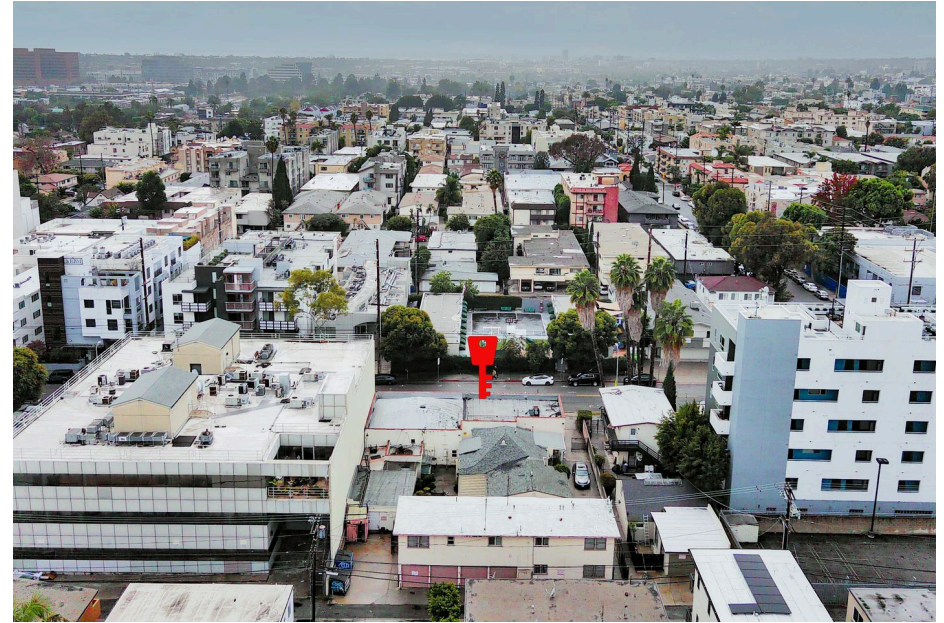
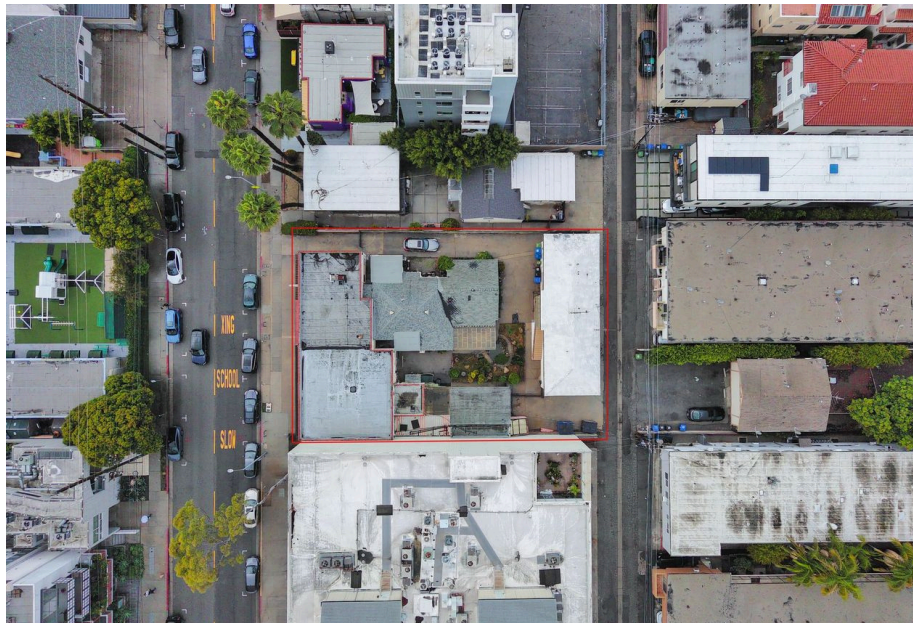
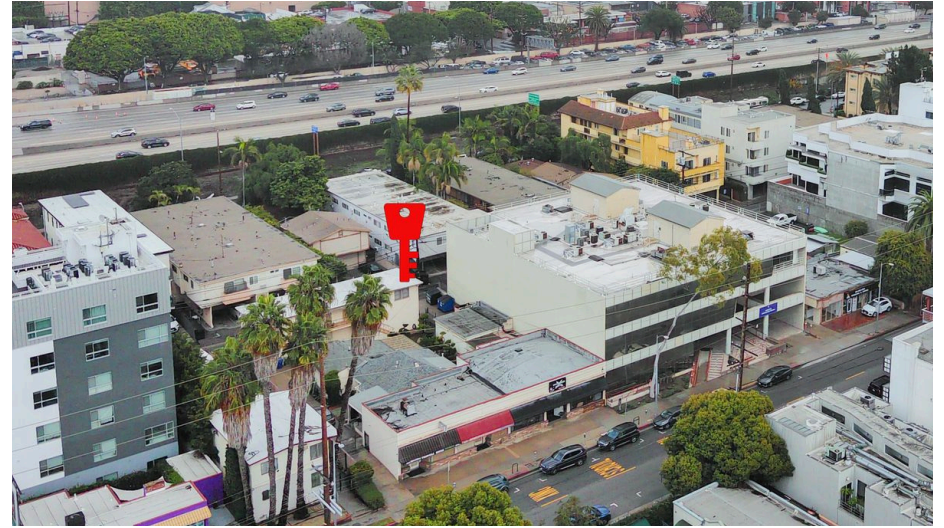
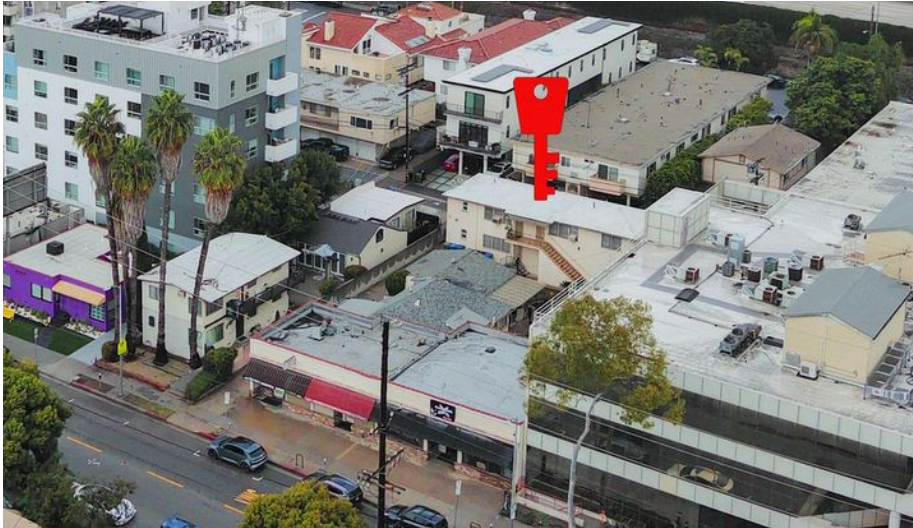
(562) 572-1197

**First  
Team.**

**MISSION  
GROUP**

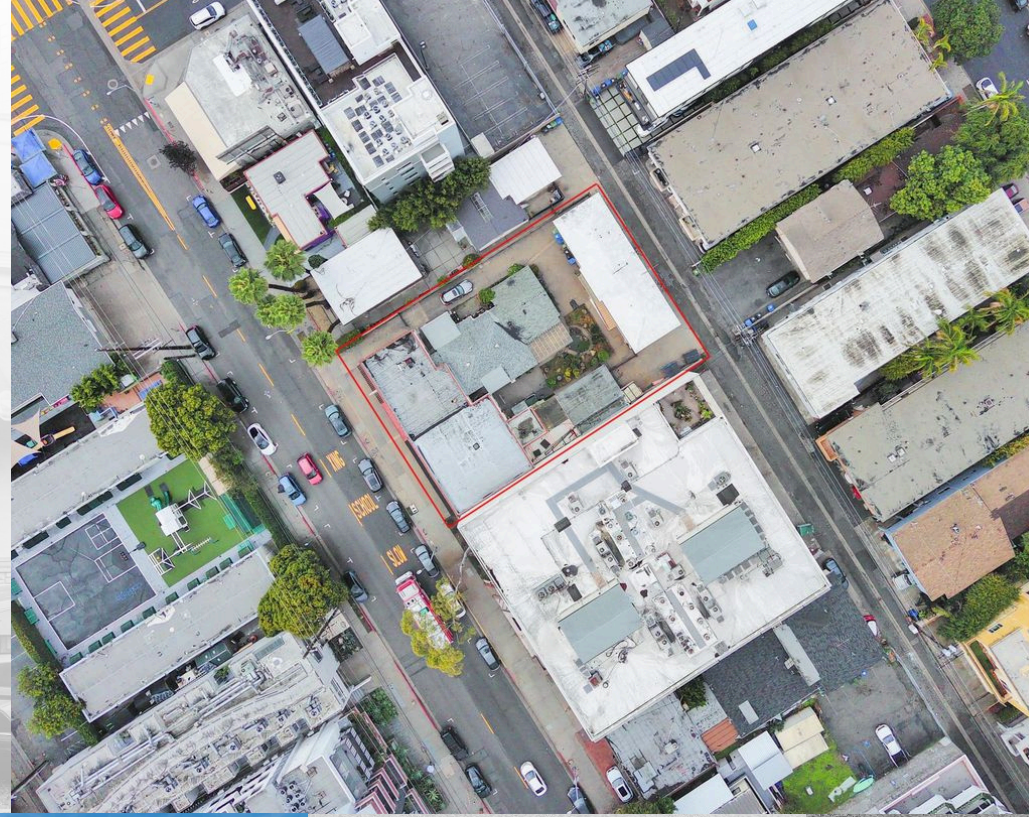


# AERIAL PHOTOS





# MULTIFAMILY DEVELOPMENT OPPORTUNITY IN THE HEART OF *SAWTELLE JAPANTOWN*



## Property Description:

- Possible TOC Tier 3 Density
- Sawtelle Japantown
- Olympic Corridor
- Redeveloping Area
- Walk to dining, shopping and transportation
- Just off Santa Monica Blvd with easy Freeway Access



Close to several shopping centers and major corporate offices like The Sawtelle Centre, One Westside Shopping Center which are walking distance, Daiso and Westfield Mall. Some large companies in the area like Activision Blizzard, Riot Games, Apple Regional office, Oracle, Universal Music Group, Occidental Petroleum, Google and a short drive to Venice and Santa Monica beaches. There is also a bus line that runs directly up Santa Monica Blvd to UCLA.