



# 385 PLEASANT ST WATERTOWN, MA 02472

3,700 SF COMMERCIAL SPACE FOR LEASE



## COMMERCIAL SPACE FOR LEASE 3,700 SF



FLEX SPACE



OFFICE



STUDIO



R&D



ON-SITE PARKING



# FACILITY

## FEATURES

Space Available	3,700 SF
Space Use	Flex/Office/Studio/R&D
Year Built	2020
Space Use	Commercial
Zoning:	PSCD-2
Walk Score®	Very Walkable (78)
Transit Score®	Some Transit (40)
Bike Score®	Very Bikeable (80)
Lease Term	Negotiable
Rental Rate	Upon Request
Condition	Class A Office
Date Available	Now

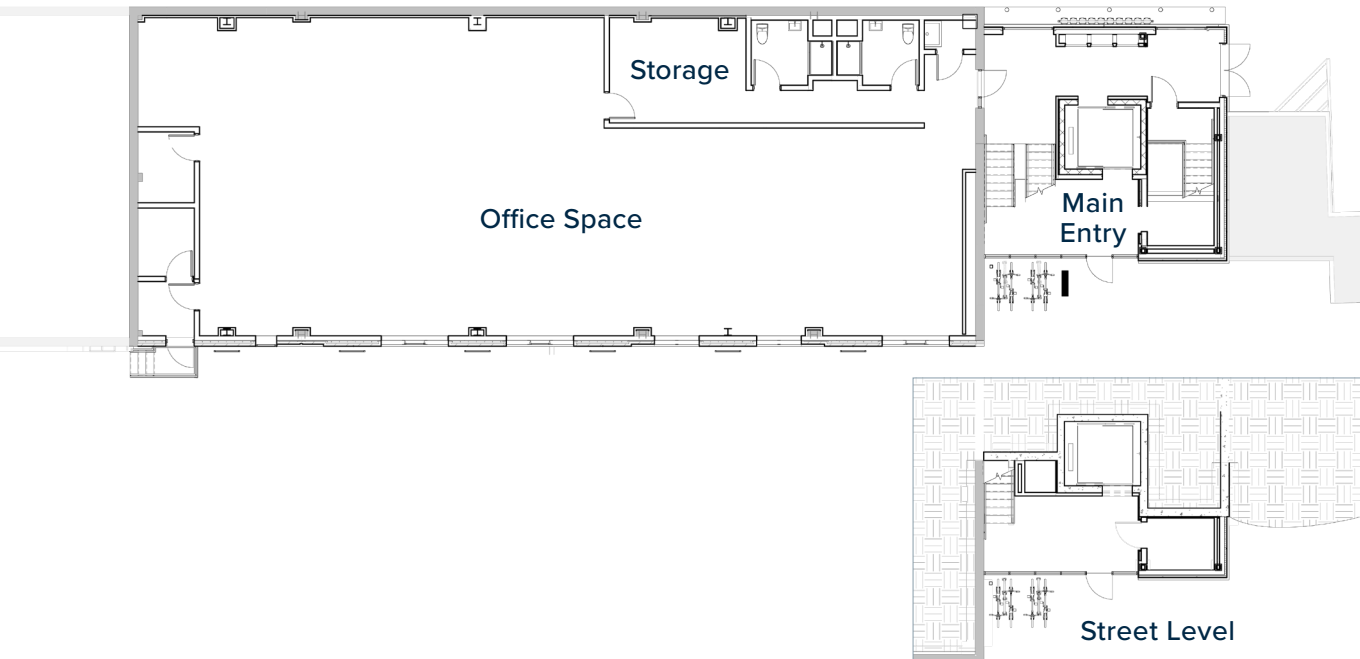
385 Pleasant Street in Watertown, MA, is a mixed-use property featuring both residential and commercial spaces. This prime location features on-site parking and storage for bikes.





# FLOOR PLAN

**3,700 SF SPACE AVAILABLE**



## MORE DETAILS

Take advantage of this 3,700 SF of commercial space. Discover unparalleled business opportunities in our building, constructed with a modern steel frame and featuring expansive open spaces in a vibrant and growing neighborhood. With easy access to parking and within walking distance of nearby neighborhoods, this prime location is ideal for launching or expanding your business.

**PROFESSIONAL OFFICE RENDERING**



**STREET LEVEL ENTRANCE**



# EXISTING CONDITIONS

BLANK SLATE TO CUSTOMIZE FOR YOUR BUSINESS - LANDLORD WILL WHITE BOX





# AERIAL MAP

## 385 PLEASANT ST, WATERTOWN



**Prime Location:** Located in the Bemis neighborhood, the property boasts a Walk Score of 78 and a Bike Score of 80, indicating it is very walkable and bike-friendly. It is conveniently situated near the Charles River walking path, popular restaurants, and is just a 10-minute drive from the Watertown Mall.

**Transit Accessibility:** For air travel, Logan International Airport is approximately 12.2 miles away, or about a 20-minute drive. Public transit options include **MBTA Green Line stations:** **Newton Highlands Station** 3.5 miles away. **Newton Centre Station** 3.7 miles away. **Woodland Station** 3.9 miles away. **Boston College Station** 4.6 miles away.



**GET IN TOUCH**

# **385 PLEASANT ST**

## **WATERTOWN, MA 02472**

**3,700 SF COMMERCIAL SPACE FOR LEASE**

Don't miss out on this exceptional leasing opportunity in one of Watertown's most desirable locations. Contact Dodge today to schedule a viewing and explore the potential of this property.



**DODGE TUCKER**

603-828-1384

[dodge@tucker-re.com](mailto:dodge@tucker-re.com)

[www.tucker-re.com](http://www.tucker-re.com)

