

FOR SALE

Juniper Ridge Light Industrial Lots

Lots 1-4, Bend, OR 97701

1.98-15.01 AC AVAILABLE



OWNER/USER DEVELOPMENT OPPORTUNITY



LES SCHWAB TIRES HEADQUARTERS



PACIFIC POWER SERVICE CENTER & TRAINING FACILITY

Jay Lyons, SIOR, CCIM | Bruce Churchill, Principal Broker
Grant Schultz, SIOR, CCIM

600 SW Columbia St., Ste. 6100 | Bend, OR 97702

541.383.2444 | www.CompassCommercial.com

COMPASS
COMMERCIAL

REAL ESTATE SERVICES

FOR SALE

\$1,315,298 - \$9,650,547

Juniper Ridge Light Industrial Lots

PROPERTY DESCRIPTION

Lots 1–4 in Juniper Ridge’s Large Tract 8 together offer approximately 15.01 acres of light industrial land with direct access to Cooley Road and strategic access to the new Cooley Road interchange and Highway 97. The lots provide flexibility for a range of development strategies, whether developed individually or as part of a larger master-planned campus. The subdivision is expected to be fully partitioned by December 2025.

Zoned Light Industrial (IL), the properties are well suited for a variety of industrial and commercial uses. In-place CC&Rs and design guidelines ensure consistent development quality throughout the business park.

The surrounding area hosts major employers and active development, including Les Schwab Headquarters, Serán Bioscience’s new commercial manufacturing campus, and Pacific Power’s recently completed \$40 million facility. Juniper Ridge continues to experience rapid growth.

Located within the Bend Enterprise Zone, the properties are eligible for potential property tax abatements, enhancing long-term value and return potential. With infrastructure in place, a strategic location within Juniper Ridge, and strong demand drivers nearby, these four lots represent a rare opportunity in one of Central Oregon’s most active employment corridors.

PROPERTY HIGHLIGHTS

- **Large industrial lots ideally suited for owner/user**
- **In-place CC&R’s and Design Guidelines** to protect the quality of development
- **Fully improved** with water, sewer, power, gas, and telecom to site
- **Located in the Enterprise Zone** – eligible for property tax abatements
- **Strategic visibility and access** via the new Cooley Road interchange
- **Surrounded by hundreds of millions in new development**, including the \$130M Bend Public Works campus and the \$200M Serán Bioscience expansion, and multiple architect-designed new buildings
- Ideal for **owner-user** seeking a premium location in a strategic and fast growing location
- Zoned Light Industrial (IL)

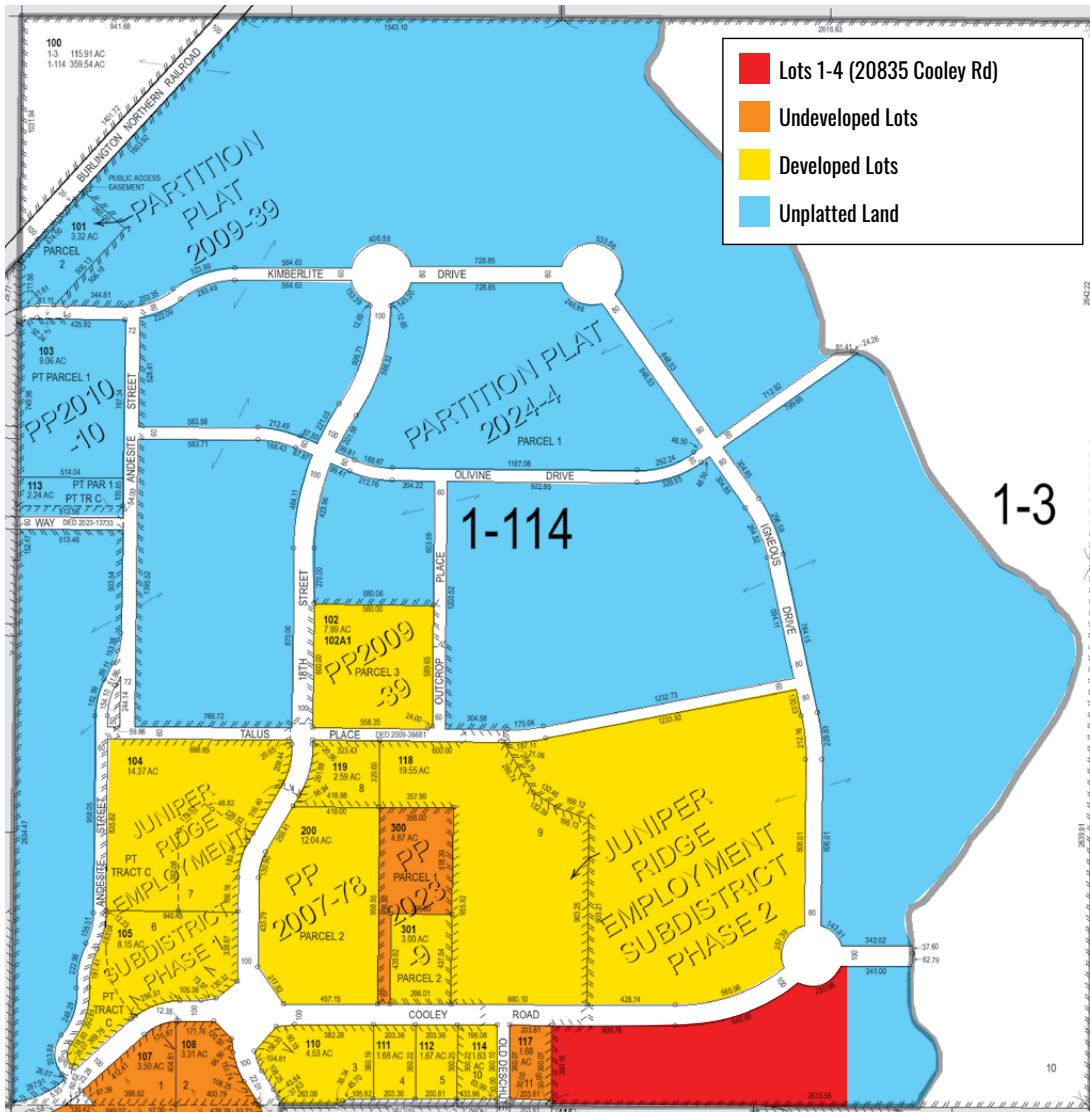
JUNIPER RIDGE MAP

Lot will be fully partitioned by December, 2025



PROPERTY DETAILS

LOTS	SIZE (SF)	SIZE (AC)	PRICE	PRICE PER SF
Lot 1	86,249 SF	1.98 AC	\$1,315,298	\$15.25/SF
Lot 2	156,380 SF	3.59 AC	\$2,314,424	\$14.80/SF
Lot 3	170,320 SF	3.91 AC	\$2,520,736	\$14.80/SF
Lot 4	240,887 SF	5.53 AC	\$3,500,089	\$14.53/SF

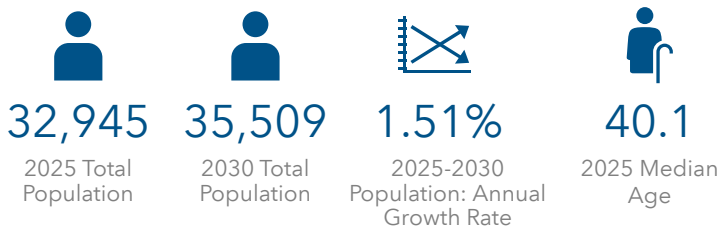


FOR SALE

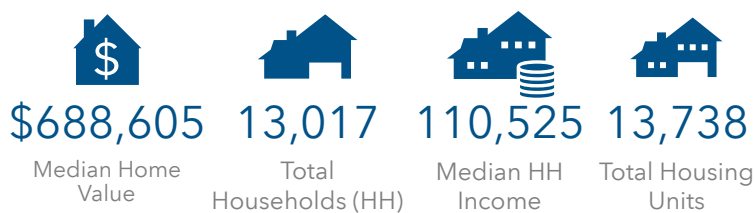
Juniper Ridge | Lots 1-4, Bend, OR 97701

DEMOGRAPHICS - THREE-MILE RADIUS

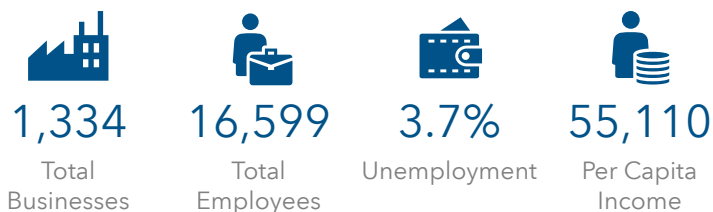
POPULATION STATS



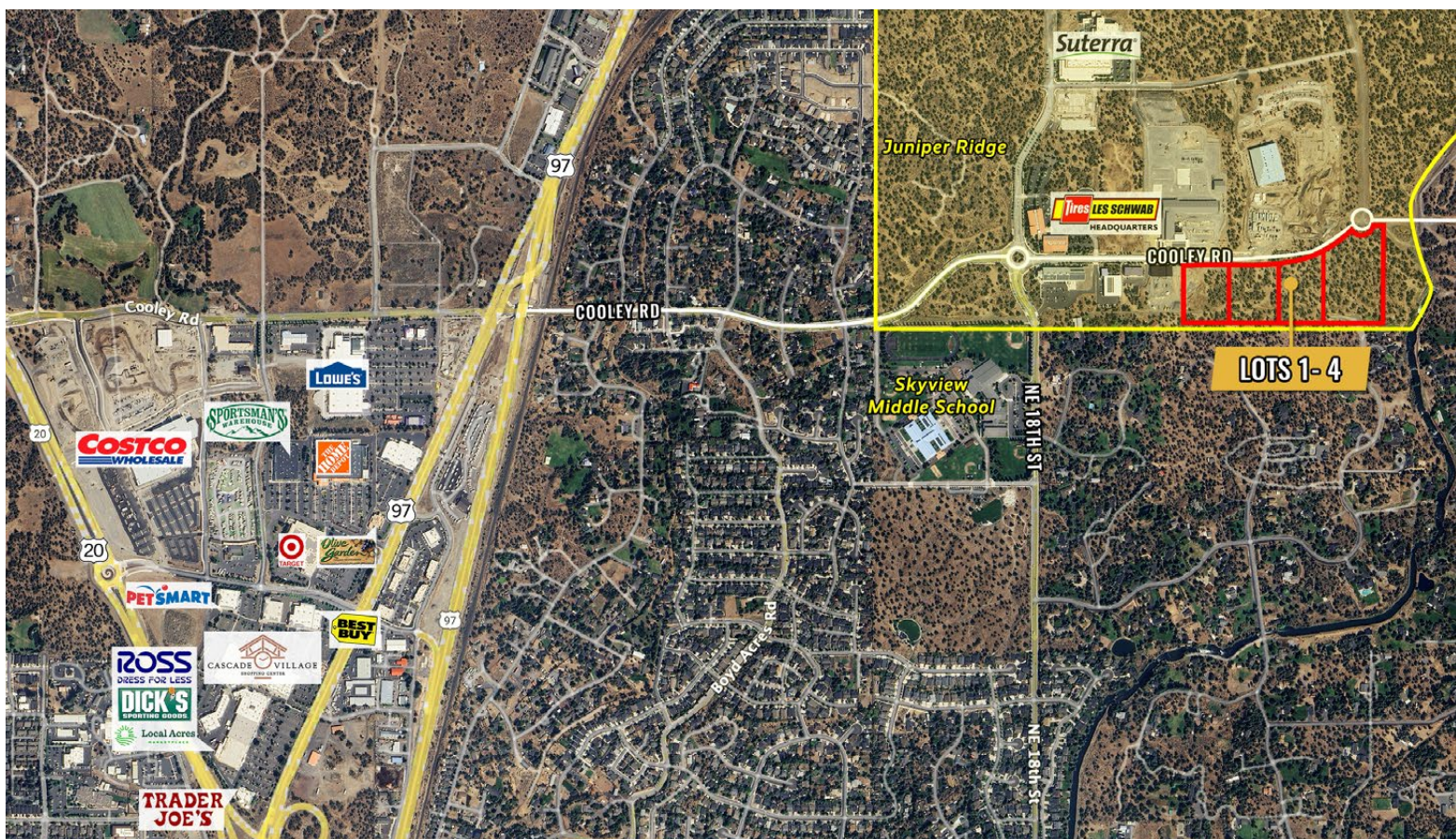
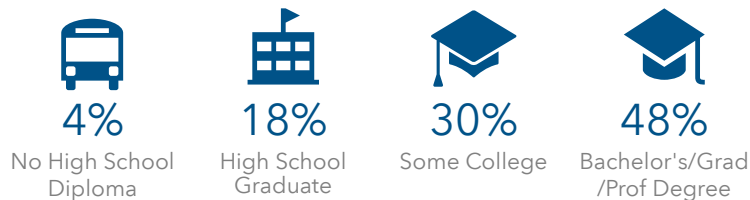
2025 HOUSING STATS



2025 BUSINESS STATS



2025 EDUCATION STATS



Brokers are licensed in the state of Oregon. This information has been furnished from sources we deem reliable, but for which we assume no liability. This is an exclusive listing. The information contained herein is given in confidence with the understanding that all negotiations pertaining to this property be handled through Compass Commercial Real Estate Services. All measurements are approximate.



Jay Lyons, SIOR, CCIM
Partner, Principal Broker
Cell 541.410.6519
jlyons@compasscommercial.com



Bruce Churchill
Principal Broker
Cell 541.280.7560
bchurchill@compasscommercial.com



Grant Schultz, SIOR, CCIM
Broker
Cell 541.480.9873
gschultz@compasscommercial.com

COMPASS COMMERCIAL
REAL ESTATE SERVICES