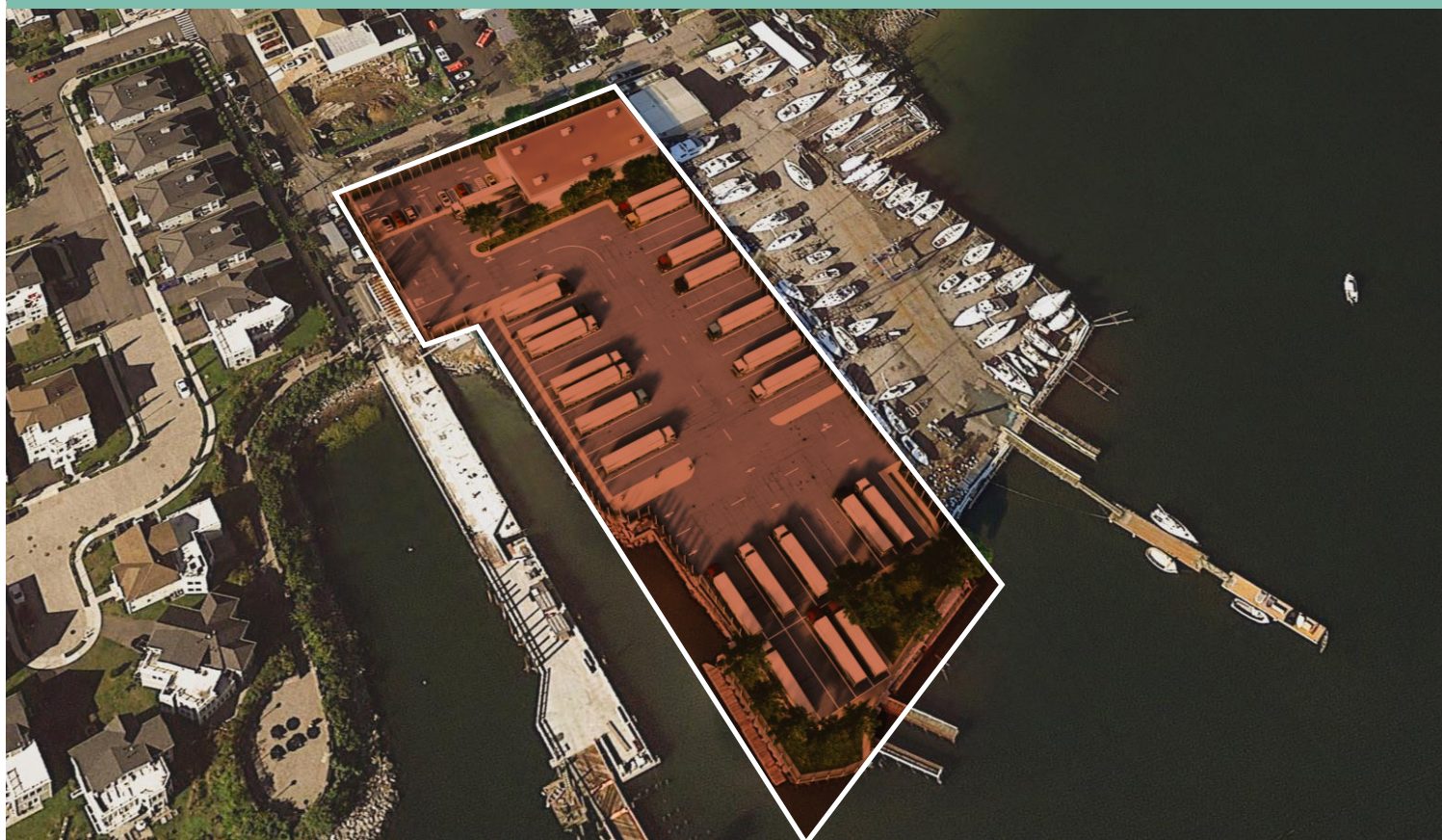


233 Fordham Place

Bronx, New York

2.4 Acres Available for Lease | Ideal for Car/Truck Parking



Property Information

+ Lot Area: 2.4 Acres

+ Block/Lot: 5644/250

+ Building Size: 6,622 SF

+ Car Parking: 9

+ Truck Parking: 52

233 Fordham Place
Bronx, New York

For Lease



Contact Us

John Reinertsen

Executive Vice President
+1 718 289 7720
john.reinertsen@cbre.com

Matthew Giordano

Senior Associate
+1 718 289 7721
matthew.giordano@cbre.com

Kaitlin Reinertsen

Associate
+1 212 984 8078
kaitlin.reinertsen@cbre.com

© 2024 CBRE, Inc. All rights reserved. This information has been obtained from sources believed reliable but has not been verified for accuracy or completeness. CBRE, Inc. makes no guarantee, representation or warranty and accepts no responsibility or liability as to the accuracy, completeness, or reliability of the information contained herein. You should conduct a careful, independent investigation of the property and verify all information. Any reliance on this information is solely at your own risk. CBRE and the CBRE logo are service marks of CBRE, Inc. All other marks displayed on this document are the property of their respective owners, and the use of such marks does not imply any affiliation with or endorsement of CBRE. Photos herein are the property of their respective owners. Use of these images without the express written consent of the owner is prohibited.

