

Burlingame *Flex*

Medical, School, Faith-Based, Triplex Residential
422, 424, 426 Peninsula Ave, San Mateo, CA
 $1,150 \text{ sf} + 1,150 + 1,150 \text{ sf} = 3,450 \text{ sf}$
For Sale or Lease



Average HH Income = \$237,106
(citywide)

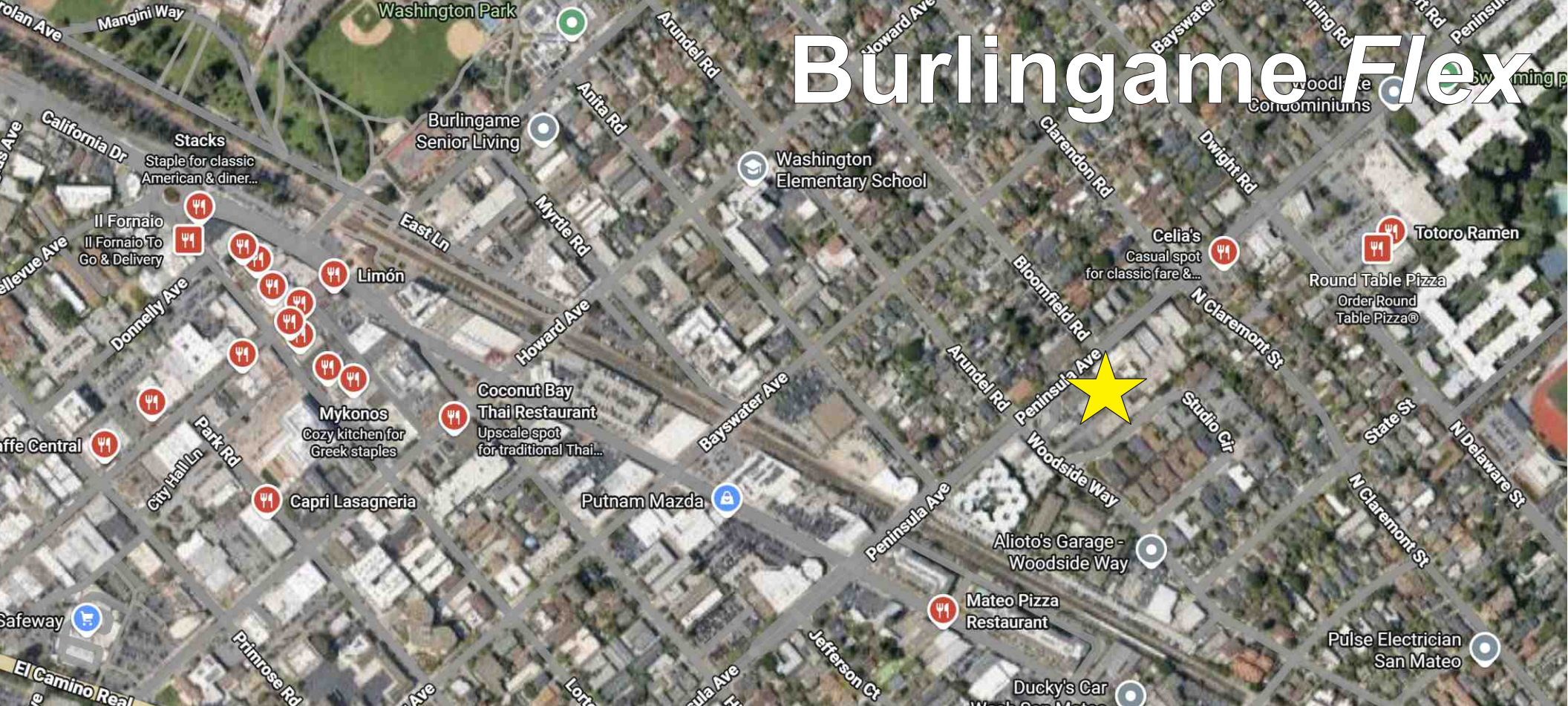
Daytime Employment = 15,399
(within 1 mile)

Car Traffic Count, Peninsula Ave &
Victoria Ave = 22,468 ADT

COMPASS

Alexander Kent
Sr. Vice President, Broker Associate
Compass Commercial
650-793-0541 | DRE# 01718732
alexander.kent@compass.com

CoSTAR
GROUP
POWER BROKER



Burlingame Flex

Convenient Transportation:

Bus Lines on Peninsula Avenue = 1/2 Blocks

Burlingame Ave Caltrain = 1/2 Mile

Highway 101 = 1 Mile

Millbrae Ave BART Train = 3 1/2 Miles

SFO Airport = 5 Miles

Fine Restaurants and Attractions:

Burlingame Ave = 1/2 Mile

TwelveMonth, Vegan

Coconut Bay, Thai

Il Fornaio, Italian

Stella Alpina, Italian

Safeway Shopping Center = 2 Blocks

Poplar Creek Golf Course, Coyote Point

Marina and Beach = 1/2 Mile

Excellent Schools:

Washington Elementary

Burlingame High School

Burlingame Intermediate

Nueva School

Crystal Springs School

COMPASS

Alexander Kent
Sr. Vice President, Broker Associate
Compass Commercial
650-793-0541 | DRE# 01718732
alexander.kent@compass.com



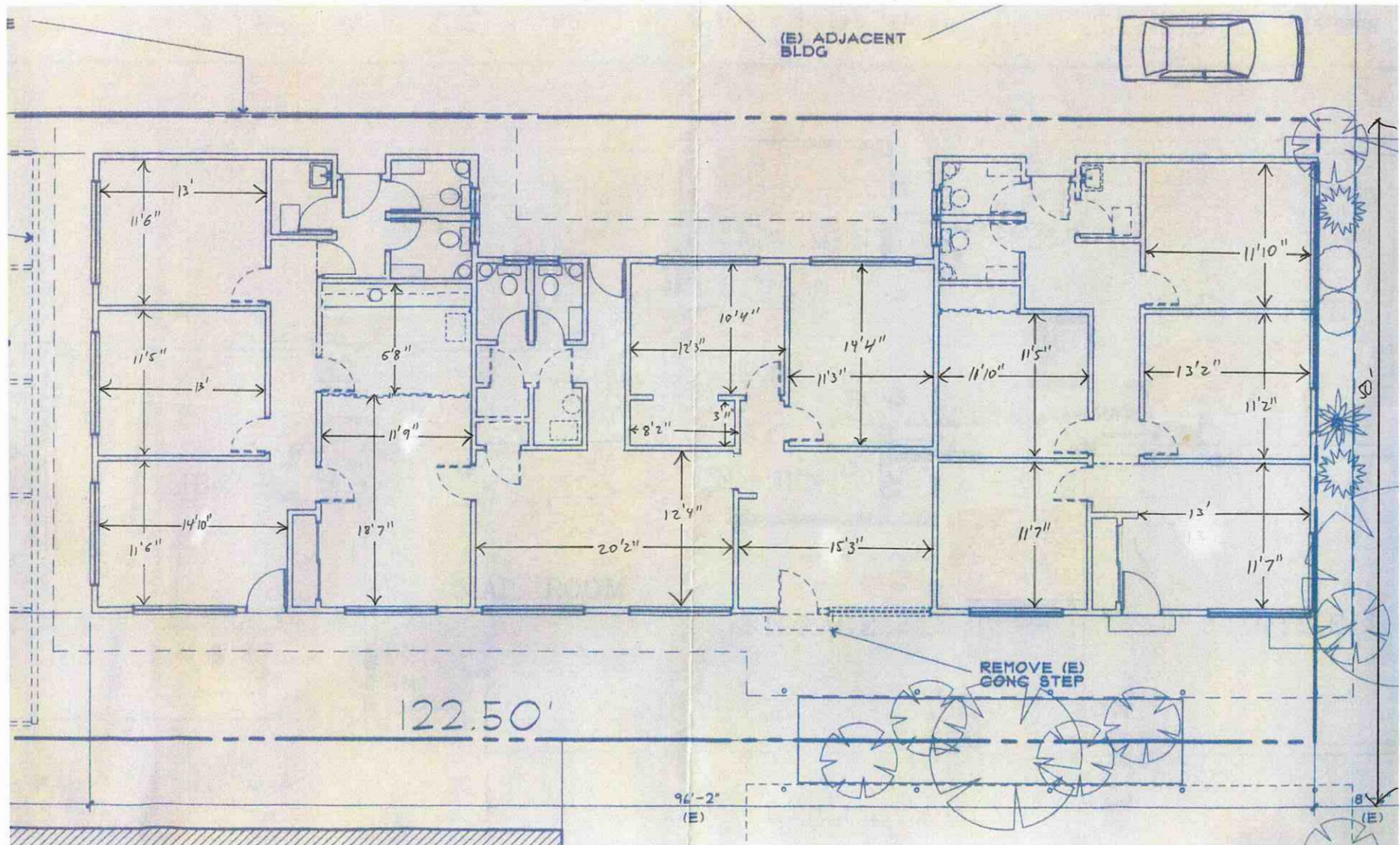


Burlingame *Flex*

COMPASS

CoSTAR
GROUP
POWER BROKER

Burlingame Flex



COMPASS

Alexander Kent
Sr. Vice President, Broker Associate
Compass Commercial
650-793-0541 | DRE# 01718732
alexander.kent@compass.com

CoSTAR
GROUP
POWER BROKER



3 Separate Entrances!
3 Separate Electric Meters!



Burlingame *Flex*



COMPASS



CoSTAR
GROUP
 POWER BROKER

Burlingame Flex

Projection for 100% vacant building. Revenues and expenses subject to change.

\$3.25/sf NNN + \$0.47/sf CAMs

Gross Revenue:

Base Rent \$3.25/sf NNN x 3,450 sf = \$11,212.50 base rent
with 3% typical annual increases x 12 = \$134,550 / yr*

\$0.47 CAMs x 3,450 sf = \$1,621.50 CAMs per month x 12
= \$19,458 / yr

\$12,834 Gross Revenue per Month x 12 months =
\$154,008 / yr

*No credit risk is added to base rent, but some analysts
use a 5% credit/vacancy factor to reduce the rent revenue.

Expenses:

Current Property Tax = **\$14,146 / yr**

New Property Tax = 1.1297% x \$2,200,000 =
\$24,853.40 + \$1,529 = **\$26,382.40 / yr**

Property Insurance = **\$3,262 / yr**

Total Utilities and Maintenance (including tenant direct
paid) = \$19,340

Landlord-Paid, Tenant-Reimbursed Utilities and
Maintenance = **\$2,400 / yr**

- landscape: \$2,400

Tenant-paid Utilities and Maintenance = \$16,940 / yr

- cleaning expense: \$7,800
- water/sewer: \$1,000
- trash: \$1,200
- gas & electric: \$6,300
- security (alarm): \$640

Current Total Expenses = \$14,146 + \$3,262 + \$2,400 =
\$19,808 / yr

(\$19,808 / 12 / 3,450 sf = **\$0.47/sf/month current CAMs**).

Proforma Total Expenses = \$26,382.40 + \$3,262 + \$2,400 =
\$32,044.40 / yr

(\$32,044.40 / 12 / 3,450 sf = **\$0.77/sf/month current CAMs**).

Current NOI = \$134,550 / yr

Proforma NOI = \$122,313.60 / yr

Asking Price = \$2,200,000

Current Cap = 6.12%

Proforma Cap = 5.56%

Burlingame *Flex*

Compass ("Broker") is a real estate broker licensed by the State of California and abides by Equal Housing Opportunity laws. License Numbers 01527235, 01527365, 01991628. All material presented herein is intended for informational purposes only and is compiled from sources deemed reliable but has not been verified. Changes in price, condition, sale or withdrawal may be made without notice. No statement is made as to accuracy of any description. All measurements and square footage are approximate.

Compass has been retained on an exclusive basis to market the property described herein ("Property"). Broker has been authorized by the Seller of the Property ("Seller") to prepare and distribute the enclosed information ("Material") for the purpose of soliciting offers to purchase from interested parties. More detailed financial, title, and tenant lease information may be made available upon request following the mutual execution of a letter of intent or contract to purchase between the Seller and prospective purchaser.

You are invited to review this opportunity and make an offer to purchase based upon your analysis. If your offer results in the Seller choosing to open negotiations with you, you will be asked to purchase based upon your analysis. If your offer results in the Seller choosing to open negotiations with you, you will be asked to provide financial references. The eventual purchaser will be chosen based upon an assessment of price, terms, ability to close the transaction and such other matters as the Seller deems appropriate.

The Material is intended solely for the purpose of soliciting expressions of interest from qualified, prospective purchasers for the acquisition of the Property. The material is not to be copied and/or used for any other purpose or made available to any other person without the expressed written consent of Broker or Seller.

The Material does not purport to be all-inclusive or to contain all of the information that a prospective purchaser may require. The information contained in the Material has been obtained from the Seller and other sources and has not been verified by the Seller or its affiliates. The pro forma is delivered only as an accommodation and neither the Seller, Broker, nor any of their respective affiliates, agents, representatives, employees, parents, subsidiaries, members, managers, partners, shareholders, directors or officers, makes any representation or warranty regarding such pro forma. Purchaser must make its own investigation of the Property and any existing or available financing, and must independently confirm the accuracy of the projections contained in the pro forma.

Seller reserves the right, for any reason, to withdrawal the Property from the market. Seller has no obligation, expressed or implied, to accept any offer. Further, Seller has no obligation to sell the Property unless and until the Seller executes and delivers a signed agreement of purchase and sale on terms acceptable to the Seller, in its sole discretion. By submitting and offer, a purchaser will be deemed to have acknowledge the foregoing and agreed to release Seller and Broker from any liability with respect thereto.

Property walk-throughs are to be conducted by appointment only. Please contact Broker for any additional information.

COMPASS

Alexander Kent
Sr. Vice President, Broker Associate
Compass Commercial
650-793-0541 | DRE# 01718732
alexander.kent@compass.com

