

# NEW SUBLEASE IN WEST HOLLYWOOD



A DIVISION OF  
**LEE &  
ASSOCIATES**

**9000 W Sunset Blvd. Suite 850  
West Hollywood, CA 90069**





## Property Information

PREMISES	± 5,445 SF
RENT	\$5.95/SF, FSG
OCCUPANCY	Immediate
TERM	Through 03/31/28
USE	Office
PARKING	Twenty parking spaces, of which three can be designated reserved. Monthly rates are: - \$260/unreserved - \$395/reserved
FEATURES	- Brand new high-end build out - Spectacular north and east views - High profile Sunset Strip address



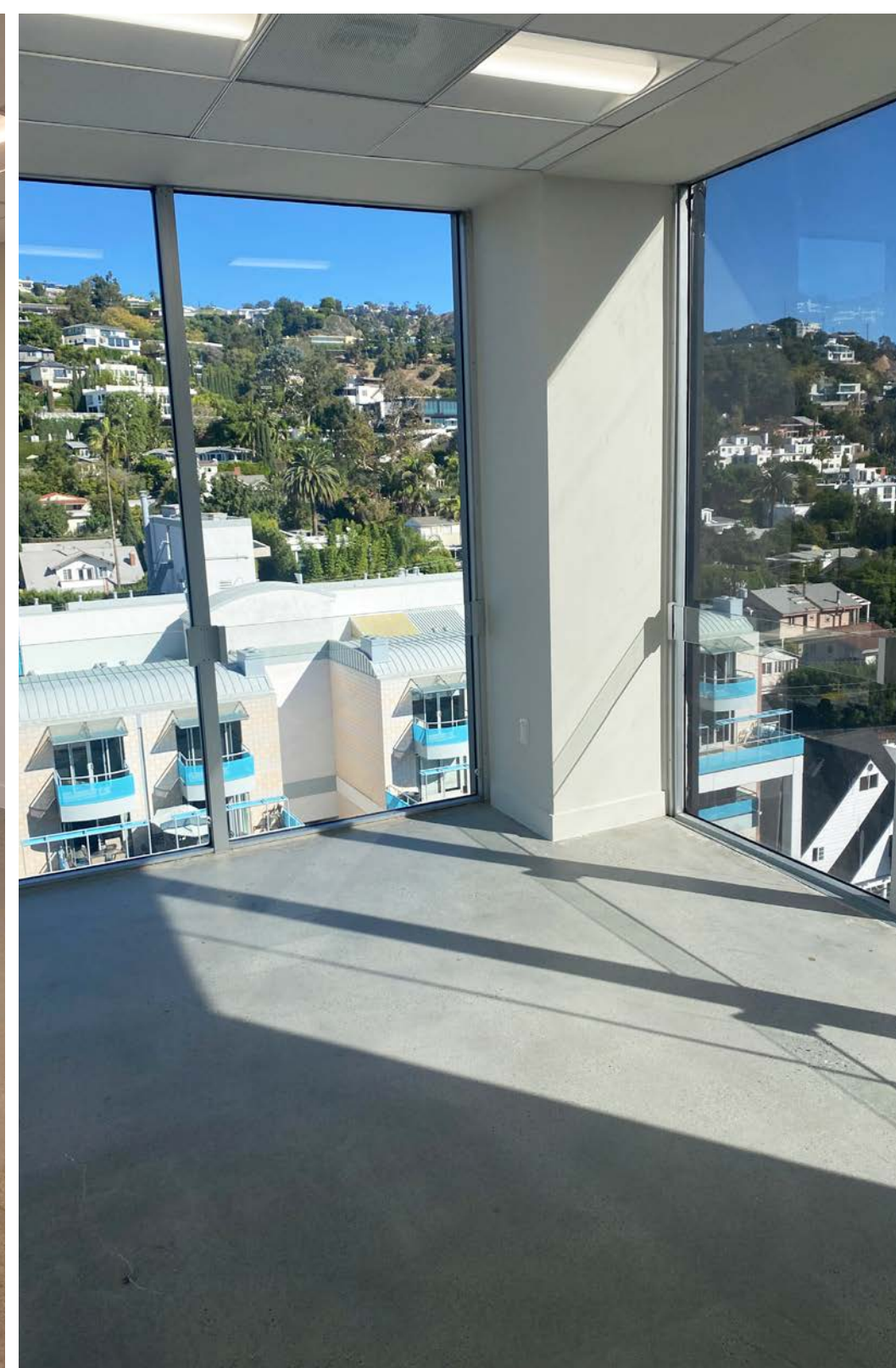
LEE &  
ASSOCIATES

1508 17th Street, Santa Monica, CA | 310.899.2700

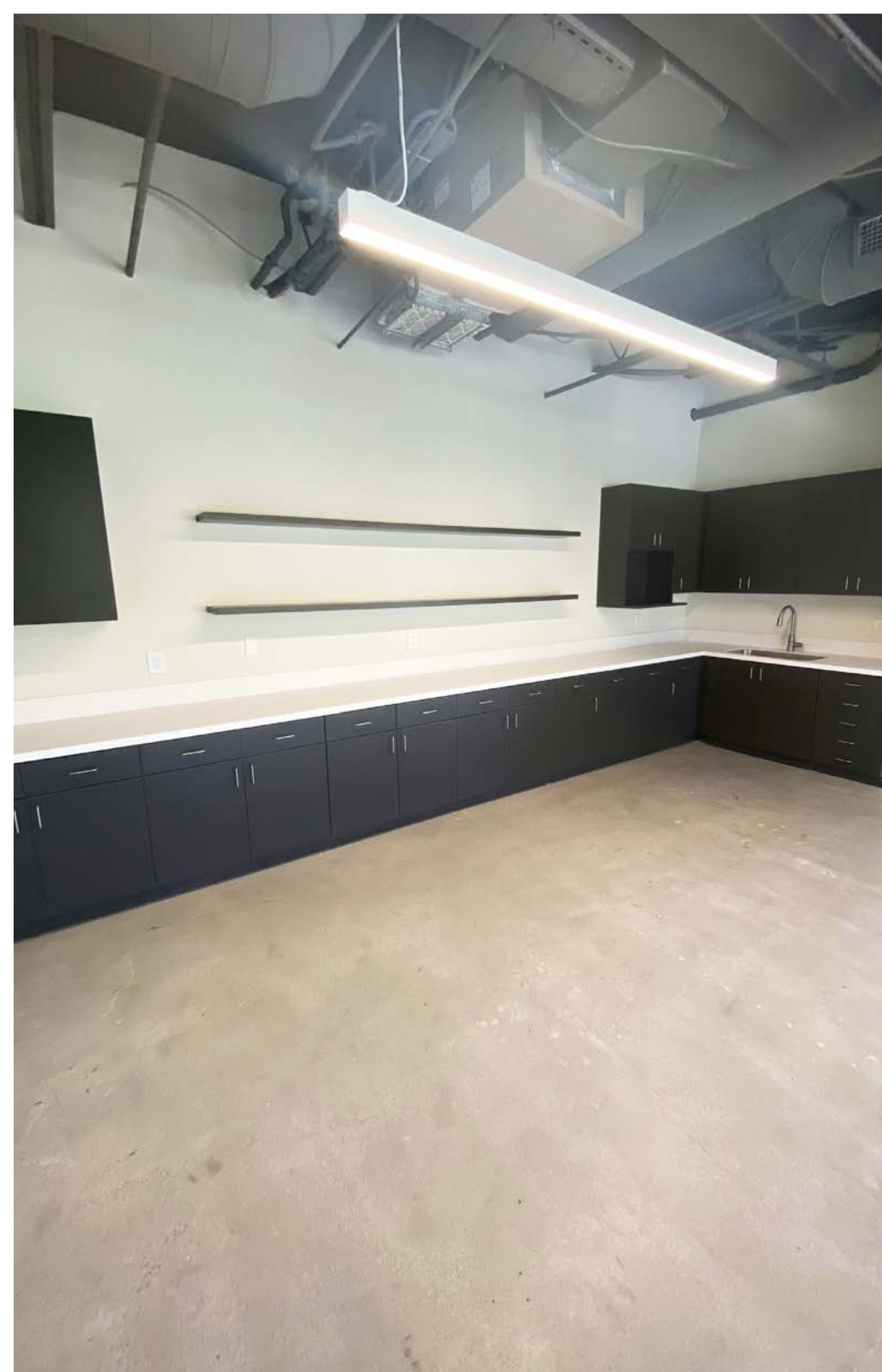
WWW.LEEWESTLA.COM | DRE 01222000

No warranty or representation is made to the accuracy of the foregoing information.  
Terms of sale or lease are subject to change or withdrawal without notice.





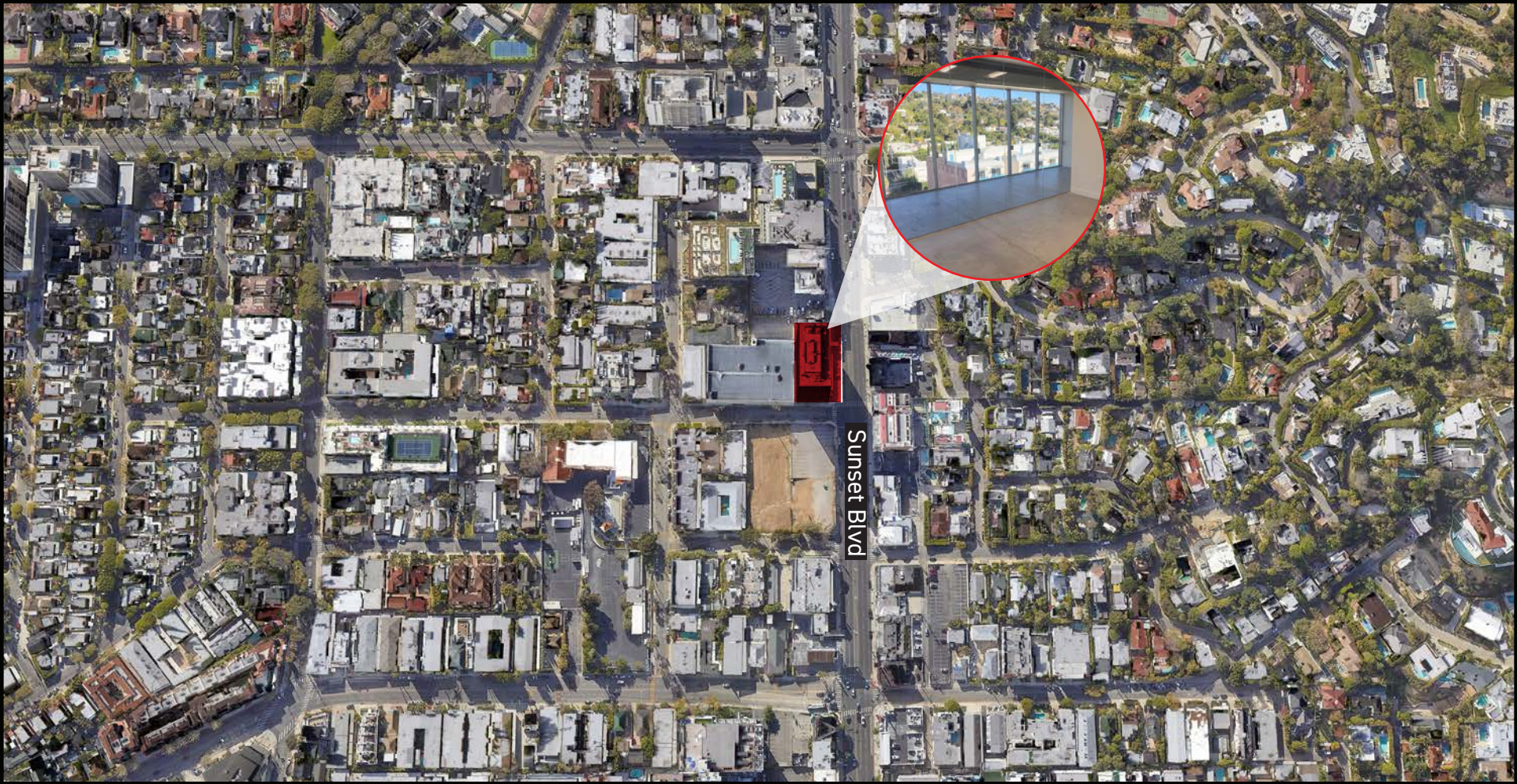








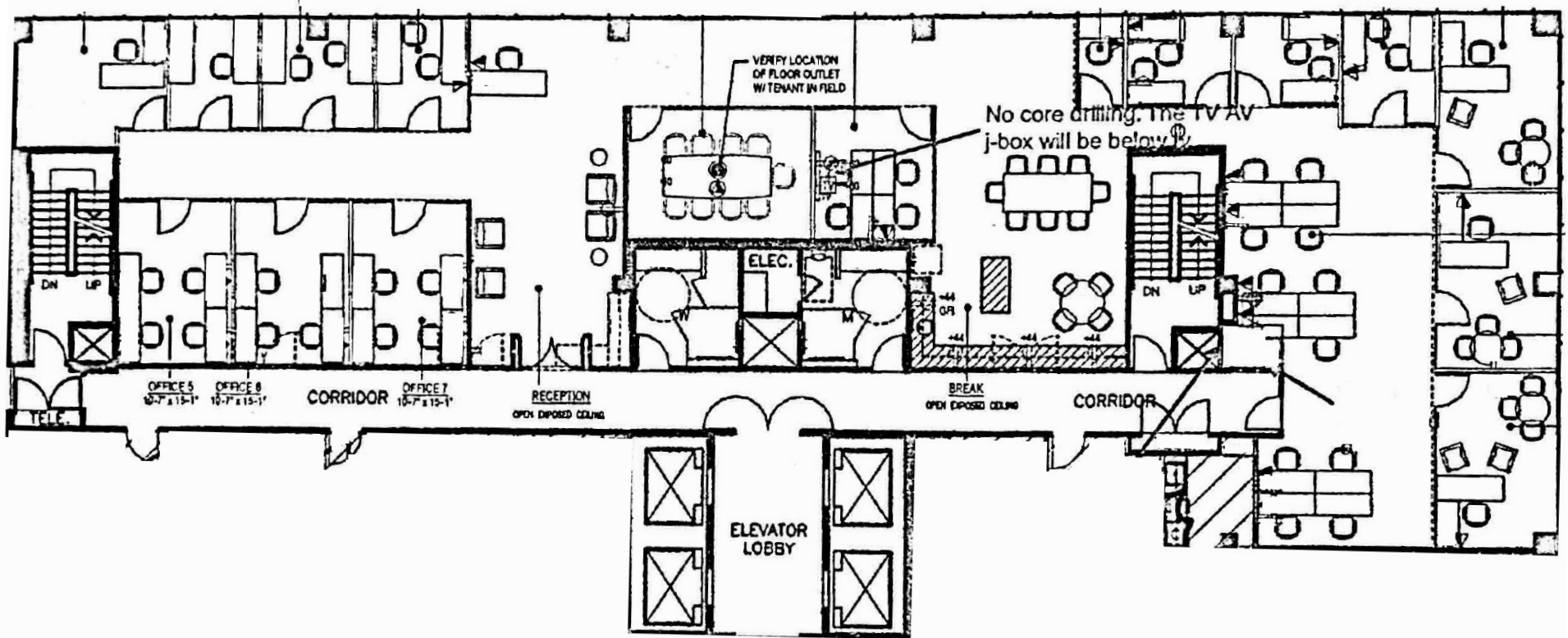




Sunset Blvd



# Hypothetical Furniture Plan





# Contact

Seth Wellisch  
Principal  
AGT 01335793  
swellisch@leewestla.com  
310.899.2734

Andrew Doan  
Associate  
AGT 02070848  
adoan@leewestla.com  
310.899.2736



A DIVISION OF



LEE &  
ASSOCIATES

1508 17th Street, Santa Monica, CA  
www.leewestla.com | DRE 01222000