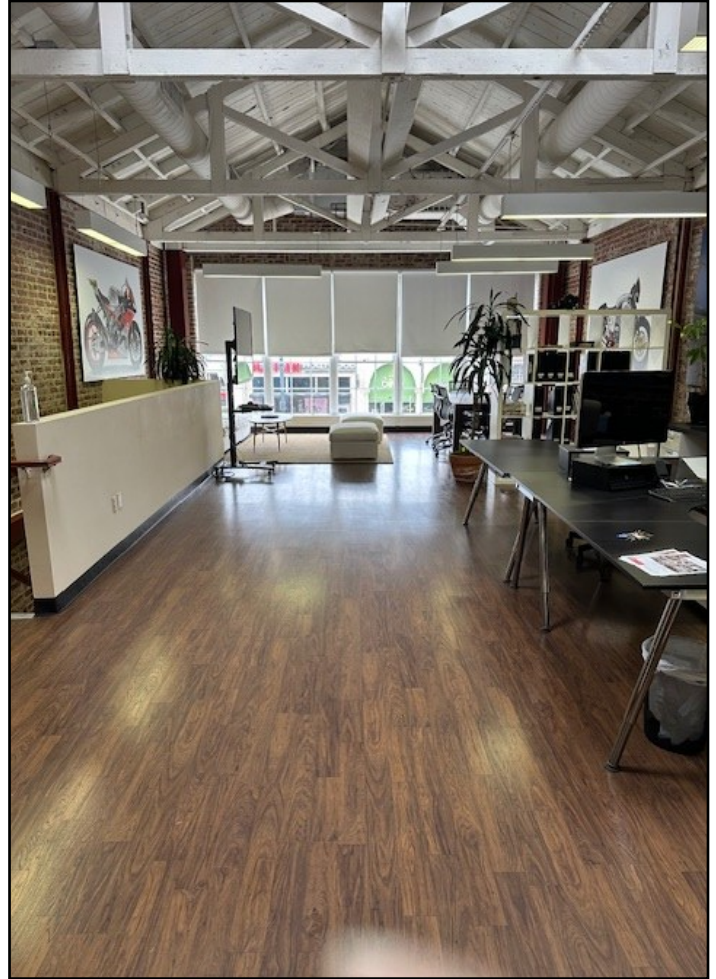


Beautiful Office Space for Lease in Old Pasadena

35 E. Colorado Blvd., Second Floor



In the Heart of Old Pasadena

Second Floor Office Space Approx. 3,044 RSF

Exposed Brick Walls ~ Energy Efficient Skylights ~ Wood Truss Ceiling

Executive Restroom ~ Elevator Served

Within walking distance of all Old Pasadena amenities.

Easy access to the Metro Gold Line, and the #210 & #134 Freeways.

Sauvé & Associates
Commercial Real Estate

Office: 626.585.4321 Cell: 626.688.3449

Norm Sauvé nsauve@sauverec.com DRE#00937271

12 South Raymond Avenue, Suite A, Pasadena, California
91105 DRE # 02117417