



**KENNEDY
INVESTMENTS**
INVESTING IN FLORIDA SINCE 1970

FOR LEASE

800 - 1,000 SF Offices

24736 - 24746 SR 54, LUTZ, FL 33559



IDEAL LOCATION

Office park located in a peaceful, family-friendly neighborhood.



CONVENIENCE

Easy access and great location off SR 54 and Carpenter's Run, central to I-75 and US 41.



LOCAL ATTRACTIONS

Only minutes away from tons of retail and restaurants, including the bustling Tampa Premium Outlets.

CURRENT AVAILABILITES

Type	Suite	SF	Contiguous	Rate
Office	24736	1,000	1,000	\$17/SF NNN
Office	24744	800	800	\$17/SF NNN
Office	24746	800	800	\$17/SF NNN

CONTACT

SHANNON RODGERS

SENIOR ASSOCIATE

☎ 813-540-7577

✉ SHANNON@KENNEDYINVESTMENTS.COM

610 E ZACK ST | SUITE 600

TAMPA, FLORIDA 33602

☎ 813-540-1200

🌐 KENNEDYINVESTMENTS.COM

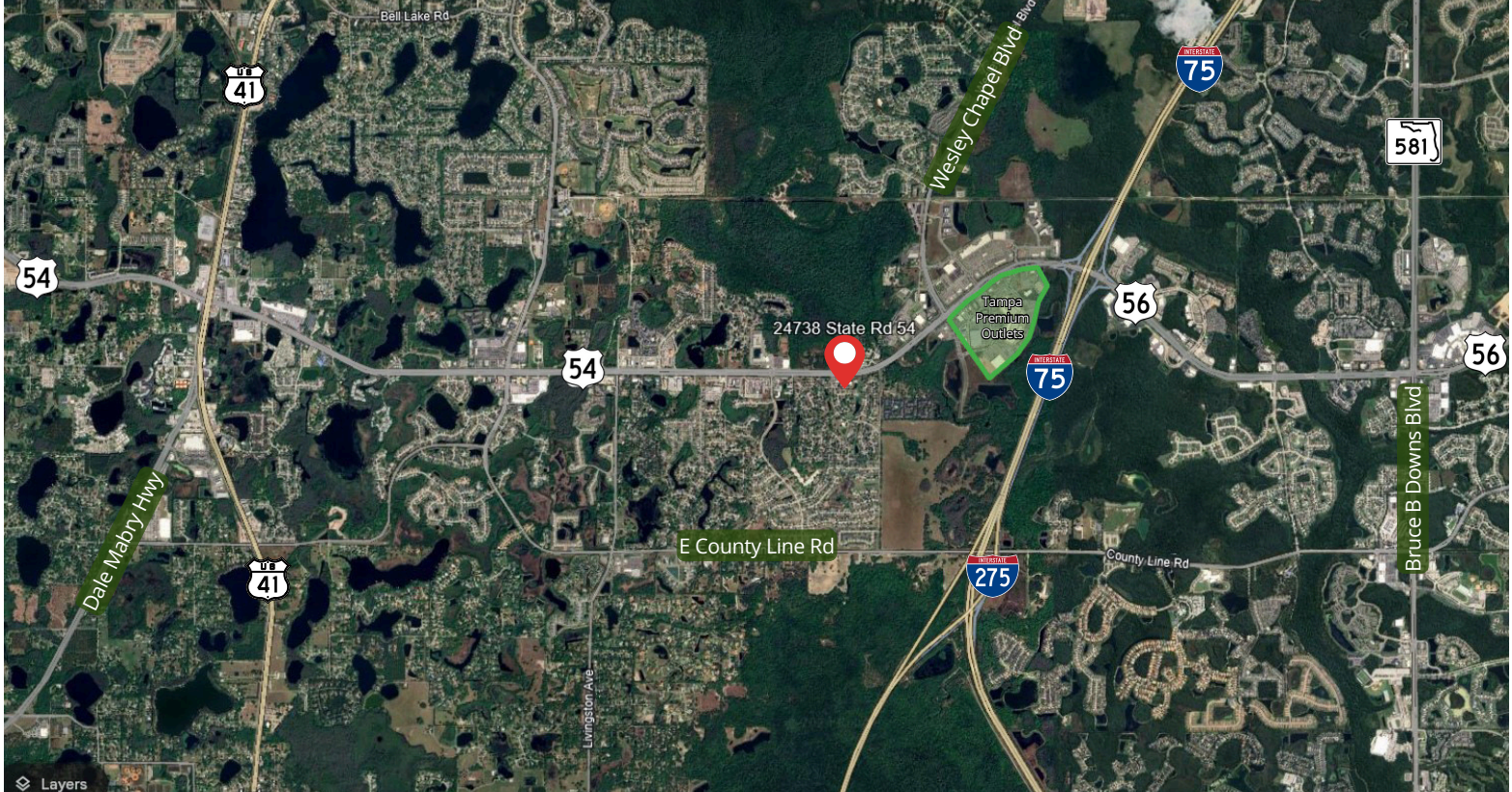


KENNEDY
INVESTMENTS
INVESTING IN FLORIDA SINCE 1970

FOR LEASE

1,000 SF Office

24736 - 24746 SR 54, LUTZ, FL 33559



DRIVE TIMES

Location	Minutes
Wesley Chapel Blvd	3
Interstate 75	4
Interstate 275	6
U.S. Highway 41	15

DEMOGRAPHICS

	1 Mile	3 Miles	5 Miles
Total Population	7,706	45,022	118,684
Avg. HH Income	\$96,124	\$109,630	\$112,164
Daytime Employment	2,980	11,870	42,667

