

1460-1560 JOHN A. PAPALAS

UNIT #1530

LINCOLN PARK, MICHIGAN

HI-TECH FOR LEASE

21,655 Square Feet Available



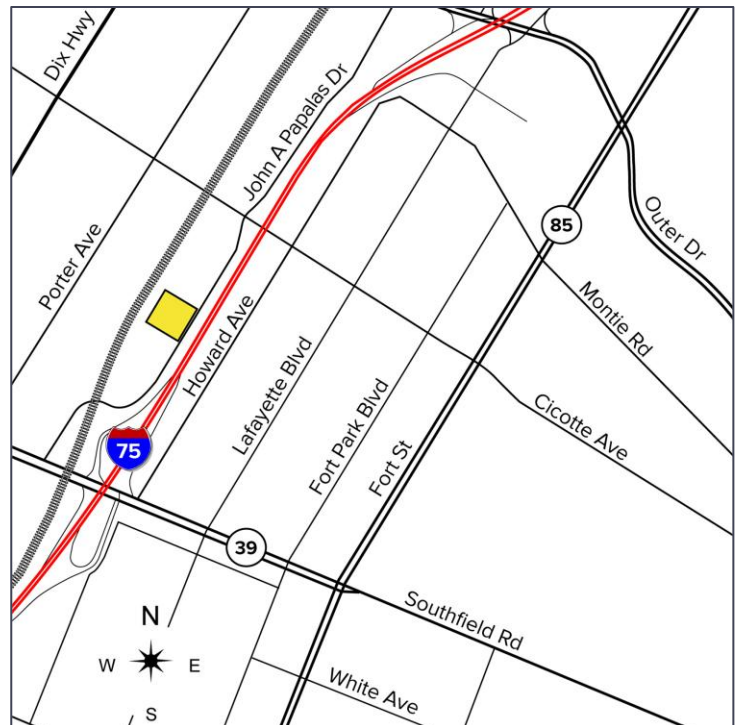
**SIGNATURE  
ASSOCIATES**  
KNOW SIGNATURE | KNOW RESULTS

## LINCOLN PARK TECH CENTER



### PROPERTY FEATURES

- 21,655 square feet available
- Office space to suit
- 18' clear height
- (2) grade level doors
- Zoned Heavy Industrial
- Ample parking spaces
- Heavy power
- Lease Rate: \$5.95/sq. ft. NNN



For more information, please contact:

**ALEX TIMMIS**

(248) 359 0623

atimmis@signatureassociates.com

**BRAD VIERGEVER**

(248) 799 3146

bviergever@signatureassociates.com

**SIGNATURE ASSOCIATES**

One Towne Square, Suite 1200

Southfield, MI 48076

www.signatureassociates.com

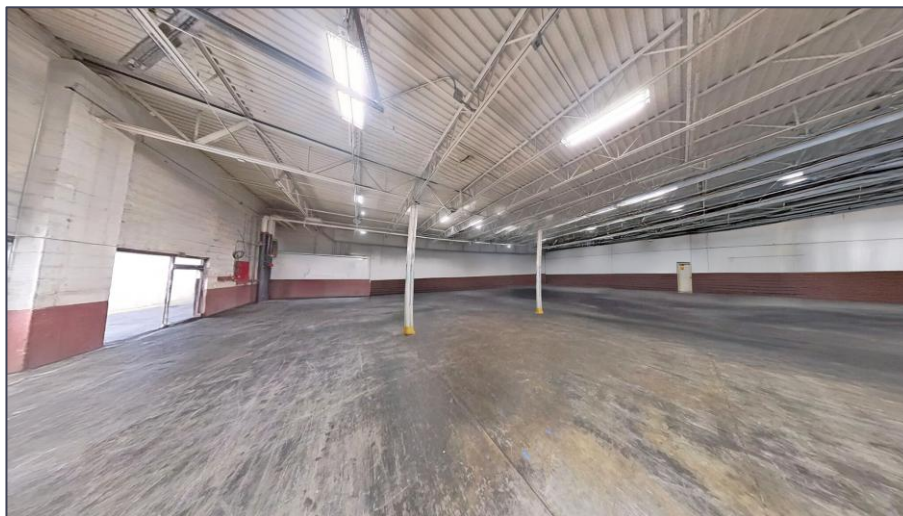


# 1460-1560 John A. Papalas Drive – Lincoln Park, MI

## Hi-Tech For Lease

21,655  
Square Feet  
AVAILABLE

### Interior Photos



For more information, please contact:

**ALEX TIMMIS**  
(248) 359 0623  
atimmis@signatureassociates.com

**BRAD VIERGEVER**  
(248) 799 3146  
bviergever@signatureassociates.com

**SIGNATURE ASSOCIATES**  
One Towne Square, Suite 1200  
Southfield, MI 48076  
www.signatureassociates.com

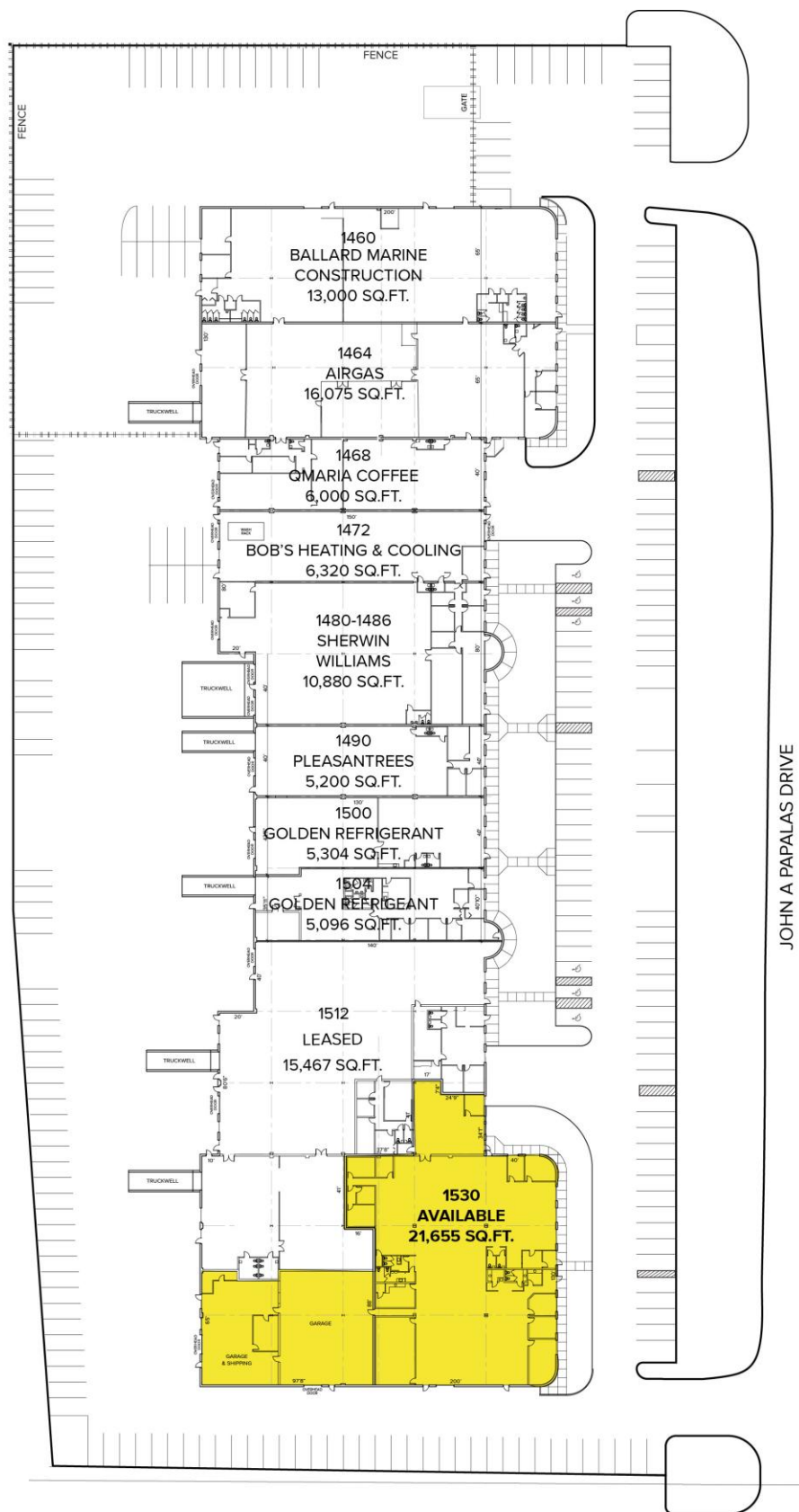
Information is subject to verification and no liability for errors or omissions is assumed. Price is subject to change and listing withdrawal.

# 1460-1560 John A. Papalas Drive – Lincoln Park, MI

## Hi-Tech For Lease

21,655  
Square Feet  
AVAILABLE

### Site Plan



For more information, please contact:

**ALEX TIMMIS**  
(248) 359 0623

[atimmis@signatureassociates.com](mailto:atimmis@signatureassociates.com)

**BRAD VIERGEVER**  
(248) 799 3146

[bviergever@signatureassociates.com](mailto:bviergever@signatureassociates.com)

**SIGNATURE ASSOCIATES**  
One Towne Square, Suite 1200  
Southfield, MI 48076  
[www.signatureassociates.com](http://www.signatureassociates.com)

Information is subject to verification and no liability for errors or omissions is assumed. Price is subject to change and listing withdrawal.

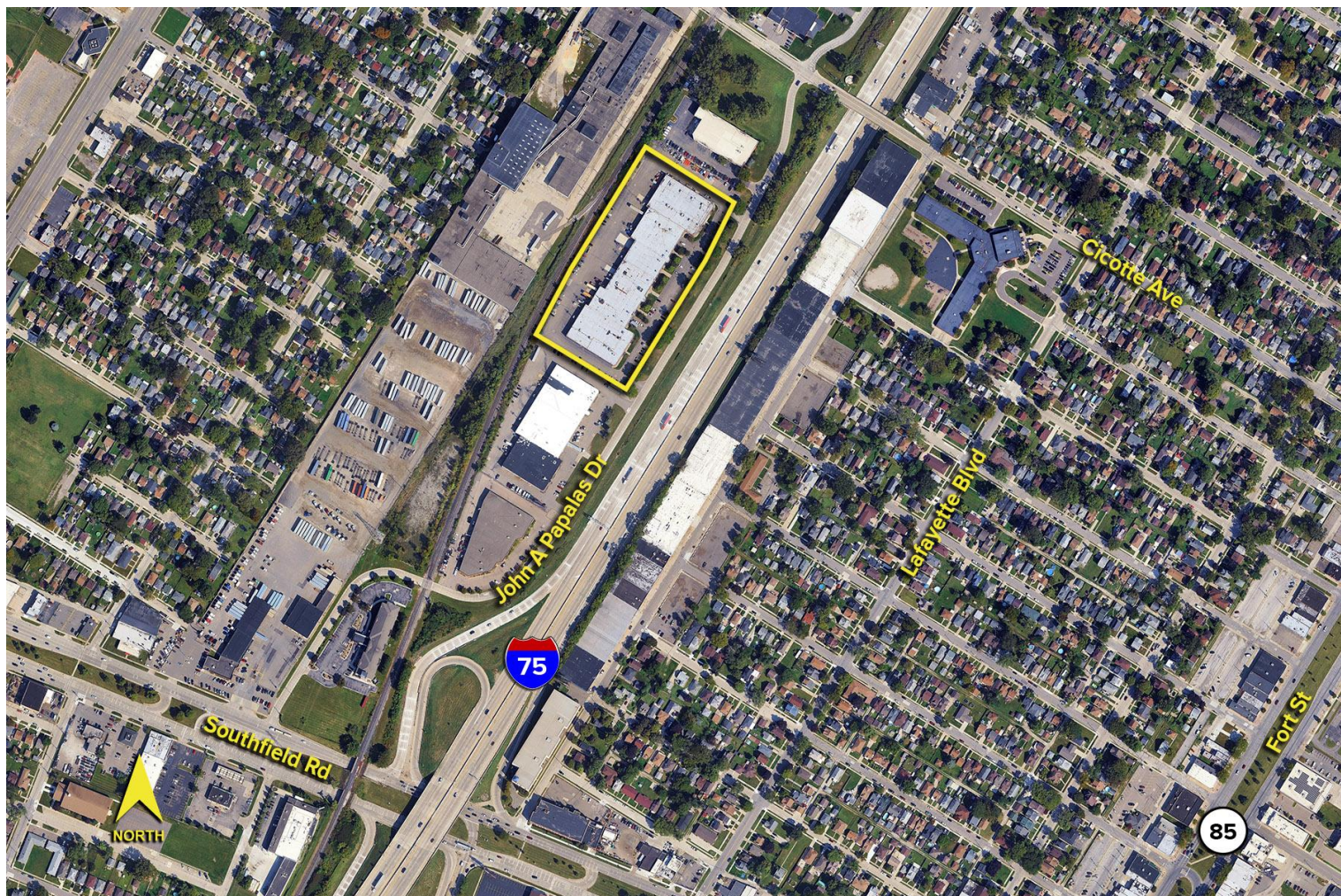


# 1460-1560 John A. Papalas Drive – Lincoln Park, MI

## Hi-Tech For Lease

21,655  
Square Feet  
AVAILABLE

Aerial



For more information, please contact:

**ALEX TIMMIS**  
(248) 359 0623  
atimmis@signatureassociates.com

**BRAD VIERGEVER**  
(248) 799 3146  
bviergever@signatureassociates.com

**SIGNATURE ASSOCIATES**  
One Towne Square, Suite 1200  
Southfield, MI 48076  
www.signatureassociates.com

Information is subject to verification and no liability for errors or omissions is assumed. Price is subject to change and listing withdrawal.