

FOR SALE OR BUILD-TO-SUIT FOR SALE/LEASE

Premier 370 Business Park

2.92 AC SITE

SE Corner Highway 370 & Premier Parkway
St. Peters, MO

Colliers



Chad J. Burkemper, sior

Executive Vice President
+1 314 584 6279 direct
+1 636 579 9020 mobile
chad.burkemper@colliers.com

Geoffrey R. Orf

Executive Vice President
+1 314 584 6255 direct
+1 314 503 5146 mobile
geoffrey.orf@colliers.com

Matt C. Hrubes, ccim

Managing Director
+1 314 584 6225 direct
+1 314 517 0055 mobile
matt.hrubes@colliers.com

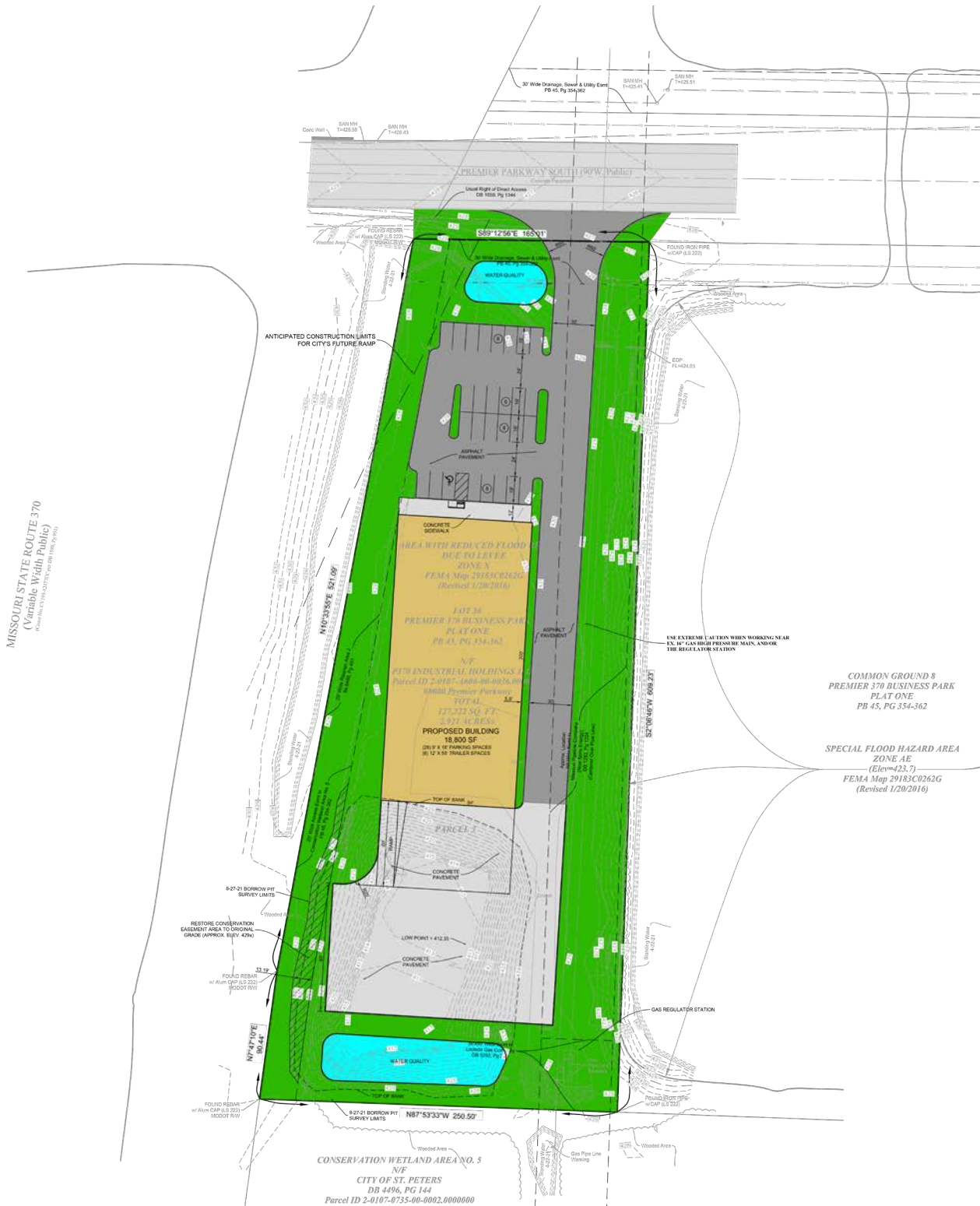
Colliers

101 South Hanley Road
Suite 1400
St. Louis, MO 63105
+1 314 863 4447
colliers.com/stlouis

- 2.92 acres available for sale or build-to-suit for sale/lease
- Build-to-suit includes a proposed 18,800 SF industrial building with 28 parking spaces and 6 trailer spaces
- Located in Premier 370 Business Park
- Real estate and personal tax abatement available through Chapter 100
- Convenient access to Highway 370 and Interstate 70

Contact Broker

\$3.95/SF



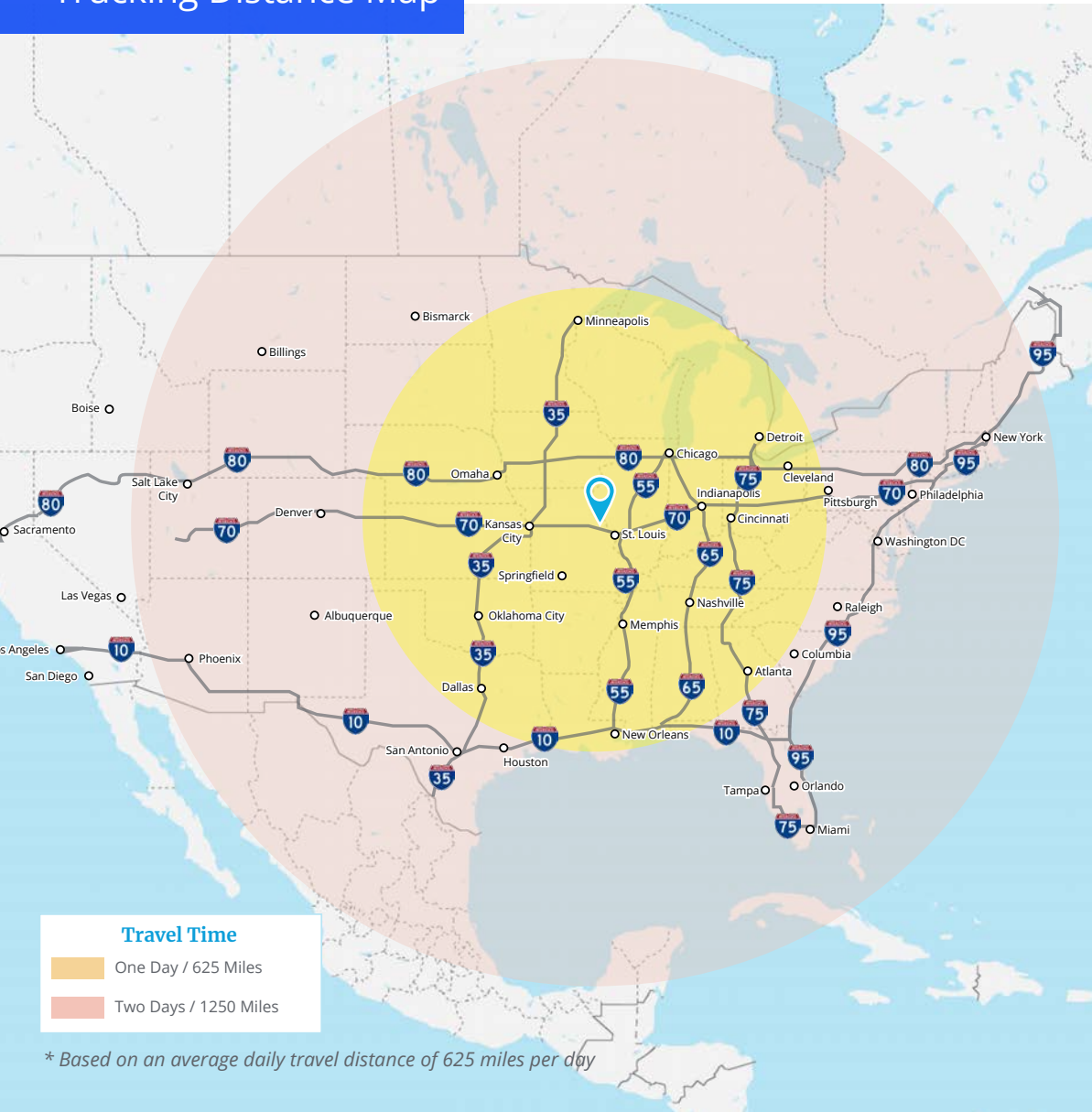
Premier 370 Business Park

- 850-acre, 4.2 million square foot business park
- Home to many well-known global corporations
- Located in St. Charles County, the fastest growing county in Missouri
- Adjacent to other established business parks such as Lakeside Logistics and Fountain Lakes Industrial Park
- Full diamond interchange provides quick and efficient access to and from the interstate highway system



Convenient Location with a Strong Workforce

Trucking Distance Map



Workforce Summary

As the fastest growing county in Missouri, St. Charles County features a dynamic workforce encompassing various industries, including manufacturing, healthcare, retail, education, and technology. The county also features many educational institutions and training centers that contribute to a well-educated and skilled workforce.

Positioned in close proximity to St. Louis, St. Charles County boasts a strong worker inflow with over one million labor shed. With its convenient and accessible location, thousands of warehouse workers commute to St. Charles County daily.

1M+
labor shed

#1
fastest growing
county in Missouri

44%
of new job growth in
the St. Louis region

*Statistics provided by the Economic
Development Council of St. Charles County

Area Demographics

	1 Mile	3 Miles	5 Miles
Population	1,934	47,622	137,453
Households	895	19,621	56,203
Average HH Income	\$106,868	\$108,235	\$113,234
No. of Business	304	1,897	4,625
No. of Workers	5,421	26,687	59,697



101 South Hanley Road
Suite 1400
St. Louis, MO 63105
+1 314 863 4447
colliers.com/stlouis

Chad J. Burkemper, SIO
Executive Vice President
+1 314 584 6279 direct
+1 636 579 9020 mobile
chad.burkemper@colliers.com

Geoffrey R. Orf
Executive Vice President
+1 314 584 6255 direct
+1 314 503 5146 mobile
geoffrey.orf@colliers.com

Matt C. Hrubes, CCIM
Managing Director
+1 314 584 6225 direct
+1 314 517 0055 mobile
matt.hrubes@colliers.com



This document/email has been prepared by Colliers for advertising and general information only. Colliers makes no guarantees, representations or warranties of any kind, expressed or implied, regarding the information including, but not limited to, warranties of content, accuracy and reliability. Any interested party should undertake their own inquiries as to the accuracy of the information. Colliers excludes unequivocally all inferred or implied terms, conditions and warranties arising out of this document and excludes all liability for loss and damages arising there from. This publication is the copyrighted property of Colliers and /or its licensor(s). © 2025. All rights reserved. This communication is not intended to cause or induce breach of an existing listing agreement.