

FOR LEASE

AVAILABLE JULY 1ST



OFFICE FLEX SPACE SANDY PLAINS BUSINESS PARK

1800 Sandy Plains Pkwy | Building 200 - Suite 224 | Marietta, GA 30066

SPACE AVAILABLE | 22,624 SF

LEASING RATE | Negotiable

HIGHLIGHTS

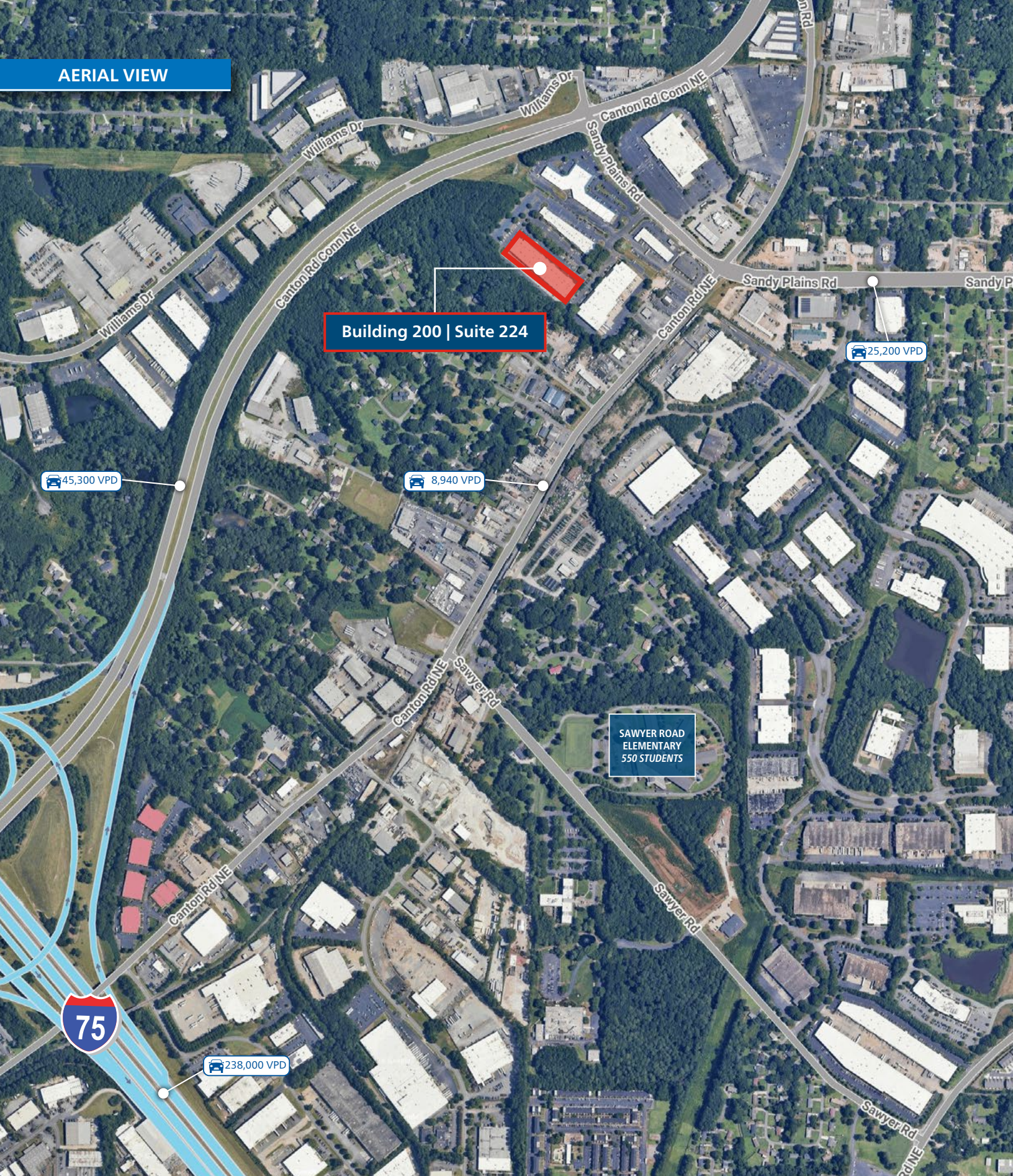
- Single-story flex office building
- Professionally landscaped environment
- 66% office (can be converted to industrial)
- 20' clear high
- 1 dock high | 2 drive-in doors
- High parking ratio
- Diverse tenant mix: medical, technology & more
- Quick access to I-75, I-575, Highway 41, 120 Loop
- Close to a variety of restaurants & retail
- State tax credit of \$3,500 per net new job annually for 5 years

JIMMY STEVENS | 770.913.3983 | JSTEVENS@ACKERMANCO.NET

©2025 Ackerman & Co. All rights reserved. While we have no reason to doubt the accuracy of the information provided from sources we deem reliable, we cannot guarantee it and therefore assume no liability for errors, omissions or changes to this content.

Ackerman & Co.
www.ackermanco.com

AERIAL VIEW



JIMMY STEVENS | 770.913.3983 | JSTEVENS@ACKERMANCO.NET

©2025 Ackerman & Co. All rights reserved. While we have no reason to doubt the accuracy of the information provided from sources we deem reliable, we cannot guarantee it and therefore assume no liability for errors, omissions or changes to this content.

Ackerman & Co.
www.ackermanco.com

SUITE 224
22,624 SF

