

JASPER, IN ACREAGE > FOR SALE or BUILD-TO-SUIT

± 5.73 acres - HIGH TRAFFIC CORNER PROPERTY



## WERNSING ROAD, JASPER, IN

CORNER ACREAGE FOR SALE or BUILD-TO-SUIT (Lease)

**SALE PRICE: \$895,000**  
**(\$156,195/acre)**

- ▶ **± 5.73 acres Total**
- ▶ DEVELOPMENT LAND IDEAL for COMMERCIAL, RETAIL, OFFICE, MIXED USE, MEDICAL, HOSPITALITY, INDUSTRIAL, or LAND INVESTMENT.
- ▶ EXCELLENT LOCATION with HIGH VISIBILITY at the corner of US HWY 231 and Twelfth Avenue.
- ▶ Zoned General Business (B3)
- ▶ Traffic Counts: 14,912 on US Hwy 231
- ▶ Possible Curb Cut on Twelfth Avenue
- ▶ All Utilities at/near Site



[CLICK FOR DRONE FOOTAGE](#)



For More Information:

**Matt Heseman**  
**Associate Broker**

mheseman@woodwardrealty.com  
812-219-6901

**Greg J. Folz**  
**Commercial Broker / Advisor**  
gfolz@woodwardrealty.com  
812-708-0106



JASPER, IN ACREAGE > FOR SALE or BUILD-TO-SUIT

± 5.73 acres - HIGH TRAFFIC CORNER PROPERTY

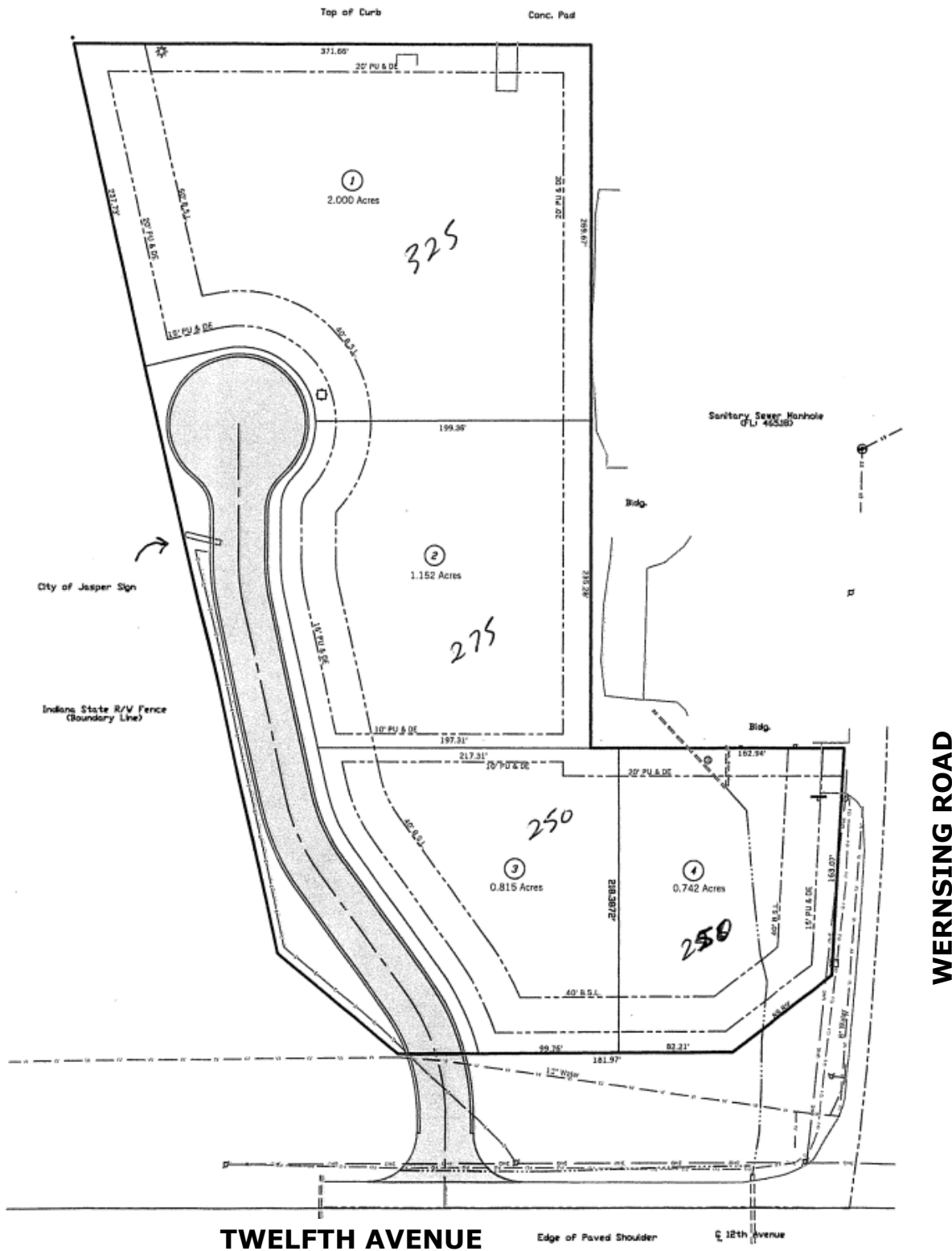


For More Information:

**Matt Heseman**  
mheseman@woodwardrealty.com  
812-219-6901

**Greg J. Folz**  
gfolz@woodwardrealty.com  
812-708-0106

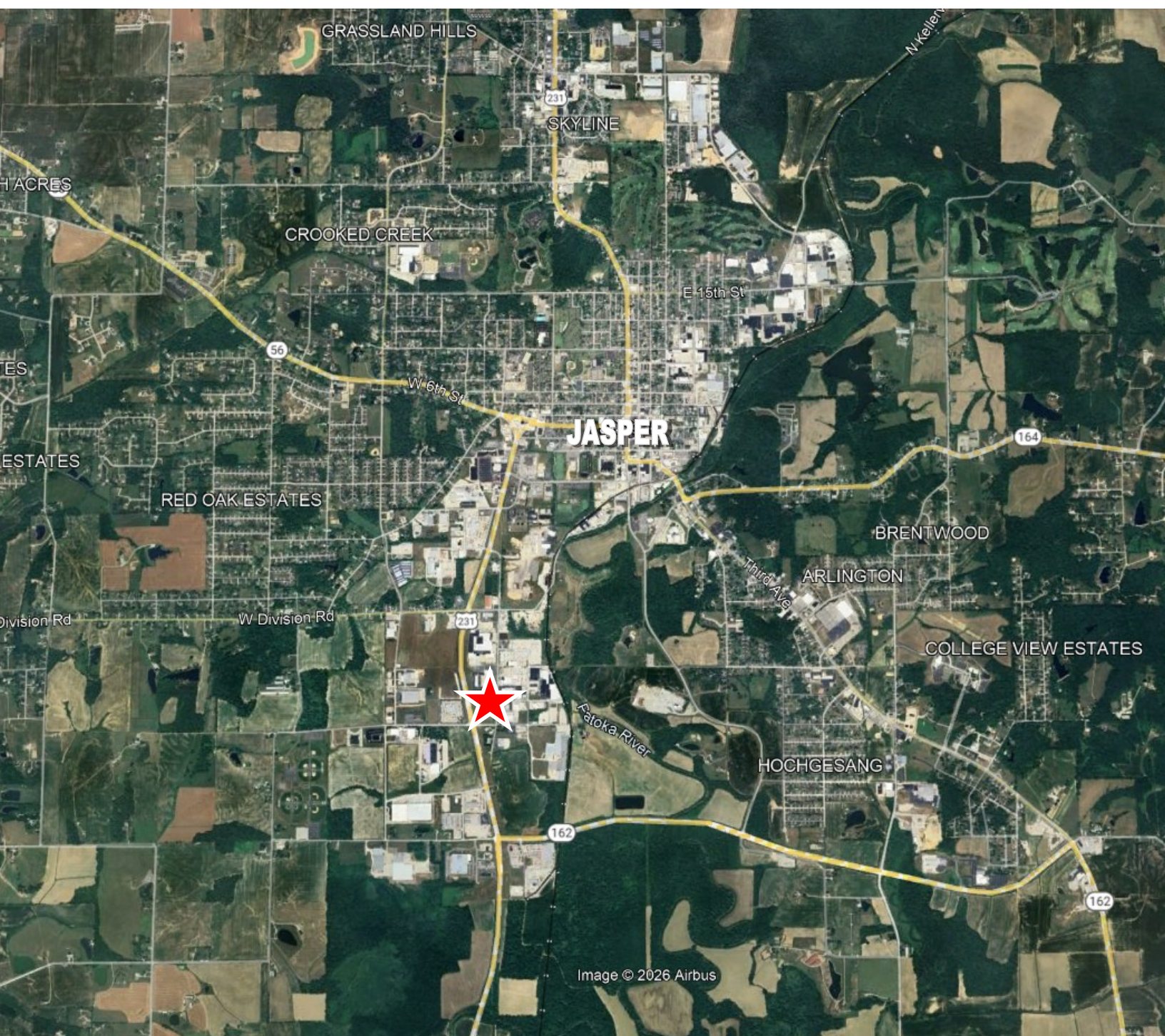
**± 5.73 acres - HIGH TRAFFIC CORNER PROPERTY**





JASPER, IN ACREAGE > FOR SALE or BUILD-TO-SUIT

± 5.73 acres - HIGH TRAFFIC CORNER PROPERTY



For More Information:

**Matt Heseman**  
mheseman@woodwardrealty.com  
812-219-6901

**Greg J. Folz**  
gfolz@woodwardrealty.com  
812-708-0106